

PLEASE CHECK WWW.MOLEX.COM FOR LATEST PART INFORMATION

Part Number: [1510481611](#)
Status: **Active**
Overview: CP Wire-to-Board and Wire-to-Wire Connector Systems
Description: CP-6.5 Header, 6.50mm Pitch, Dual Row, Vertical, Polarized, Positive Lock, Tray Packaging, Glow-Wire Capable, 6 Circuits, Natural (White)

Documents:

| | |
|--|--|
| 3D Model | Packaging Specification PK-151048-0002-001 (PDF) |
| 3D Model (PDF) | Test Summary 1510480001-TS-000 (PDF) |
| Drawing (PDF) | Datasheet (PDF) |
| Product Specification PS-151048-0001-001 (PDF) | RoHS Certificate of Compliance (PDF) |

Agency Certification

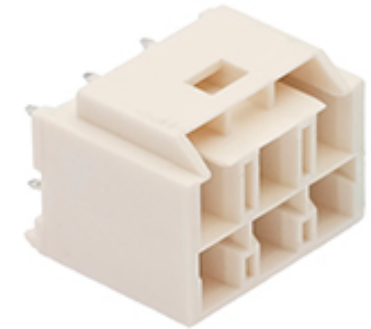
UL E29179

General

| | |
|----------------------|--|
| Product Family | PCB Headers |
| Series | 151048 |
| 3D Viewer | Yes |
| Application | Power, Wire-to-Board |
| CURRENT-MAX-NUMERIC | 10.0 |
| Comments | See Product Specification for maximum current rating by circuit size and wire AWG, See Product Specification for maximum current rating by circuit size and wire AWG |
| Datasheet Order No | 987651-1601 |
| Overview | CP Wire-to-Board and Wire-to-Wire Connector Systems |
| PITCH-MATING-NUMERIC | 6.50 |
| Product Name | CP-6.5 |
| UPC | 889056067201 |

Physical

| | |
|--------------------------------|-----------------|
| Breakaway | No |
| Circuits (Loaded) | 6 |
| Circuits (maximum) | 6 |
| Color - Resin | Natural (White) |
| Durability (mating cycles max) | 30 |
| First Mate / Last Break | No |
| Flammability | 94V-0 |
| Glow-Wire Capable | Yes |
| Guide to Mating Part | No |
| Keying to Mating Part | Yes |
| Lock to Mating Part | Yes |
| Material - Metal | Copper Alloy |
| Material - Plating Mating | Matte Tin |
| Material - Plating Termination | Matte Tin |
| Material - Resin | Polyamide |
| Net Weight | 4.077/g |
| Number of Rows | 2 |
| Orientation | Vertical |
| PC Tail Length | 3.80mm |
| PCB Locator | Yes |
| PCB Retention | Yes |
| PCB Thickness - Recommended | 1.60mm |
| Packaging Type | Tray |
| Pitch - Mating Interface | 6.50mm |
| Plating min - Mating | 1.270µm |
| Plating min - Termination | 1.270µm |



Series image - Reference only

EU ELV

Not Relevant

EU RoHS

Compliant

REACH SVHC

Not Contained Per - ED/71/2019 (16 July 2019)

Halogen-Free

Status

Not Low-Halogen

For more information, please visit [Contact US](#)

China ROHS

ELV

RoHS Phthalates

China RoHS

Green Image

Not Relevant

Not Contained

Search Parts in this Series

[151048 Series](#)

Mates With

CP-6.5 Receptacle Housing [1510492611](#) , [1512072611](#)

| | |
|------------------------------------|--------------------|
| Polarized to Mating Part | Yes |
| Polarized to PCB | Yes |
| Temperature Range - Operating | -40° to +105°C |
| Termination Interface: Style | Through Hole |
| Electrical | |
| Current - Maximum per Contact | 10.0A |
| Voltage - Maximum | 600V AC (RMS)/DC |
| Solder Process Data | |
| Lead-freeProcess Capability | WAVE |
| Material Info | |
| Reference - Drawing Numbers | |
| Packaging Specification | PK-151048-0002-001 |
| Product Specification | PS-151048-0001-001 |
| Sales Drawing | SD-151048-0001-001 |
| Test Summary | 1510480001-TS-000 |

This document was generated on 11/20/2019

PLEASE CHECK WWW.MOLEX.COM FOR LATEST PART INFORMATION