

PLEASE CHECK WWW.MOLEX.COM FOR LATEST PART INFORMATION

Part Number: [1510481609](#)
Status: **Active**
Overview: CP Wire-to-Board and Wire-to-Wire Connector Systems
Description: CP-6.5 Header, 6.50mm Pitch, Dual Row, Vertical, Polarized, Positive Lock, Tray Packaging, Glow-Wire Capable, 6 Circuits, Red

Documents:

3D Model	Packaging Specification PK-151048-0002-001 (PDF)
3D Model (PDF)	Test Summary 1510480001-TS-000 (PDF)
Drawing (PDF)	Datasheet (PDF)
Product Specification PS-151048-0001-001 (PDF)	RoHS Certificate of Compliance (PDF)

Agency Certification

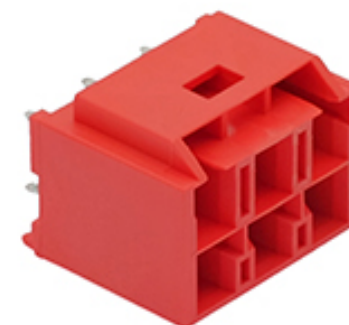
UL E29179

General

Product Family	PCB Headers
Series	151048
3D Viewer	Yes
Application	Power, Wire-to-Board
CURRENT-MAX-NUMERIC	10.0
Comments	See Product Specification for maximum current rating by circuit size and wire AWG, See Product Specification for maximum current rating by circuit size and wire AWG
Datasheet Order No	987651-1601
Overview	CP Wire-to-Board and Wire-to-Wire Connector Systems
PITCH-MATING-NUMERIC	6.50
Product Name	CP-6.5
UPC	889056067195

Physical

Breakaway	No
Circuits (Loaded)	6
Circuits (maximum)	6
Color - Resin	Red
Durability (mating cycles max)	30
First Mate / Last Break	No
Flammability	94V-0
Glow-Wire Capable	Yes
Guide to Mating Part	No
Keying to Mating Part	Yes
Lock to Mating Part	Yes
Material - Metal	Copper Alloy
Material - Plating Mating	Matte Tin
Material - Plating Termination	Matte Tin
Material - Resin	Polyamide
Net Weight	4.077/g
Number of Rows	2
Orientation	Vertical
PC Tail Length	3.80mm
PCB Locator	Yes
PCB Retention	Yes
PCB Thickness - Recommended	1.60mm
Packaging Type	Tray
Pitch - Mating Interface	6.50mm
Plating min - Mating	1.270µm
Plating min - Termination	1.270µm



Series image - Reference only

EU ELV

Not Relevant

EU RoHS

Compliant

REACH SVHC

Not Contained Per - ED/71/2019 (16 July 2019)

Halogen-Free

Status

Not Low-Halogen

For more information, please visit [Contact US](#)

China ROHS

ELV

RoHS Phthalates

China RoHS

Green Image

Not Relevant

Not Contained

Search Parts in this Series

[151048 Series](#)

Mates With

CP-6.5 Receptacle Housing [1510492609](#) , [1512072609](#)

Polarized to Mating Part	Yes
Polarized to PCB	Yes
Temperature Range - Operating	-40° to +105°C
Termination Interface: Style	Through Hole
Electrical	
Current - Maximum per Contact	10.0A
Voltage - Maximum	600V AC (RMS)/DC
Solder Process Data	
Lead-freeProcess Capability	WAVE
Material Info	
Reference - Drawing Numbers	
Packaging Specification	PK-151048-0002-001
Product Specification	PS-151048-0001-001
Sales Drawing	SD-151048-0001-001
Test Summary	1510480001-TS-000

This document was generated on 11/20/2019

PLEASE CHECK WWW.MOLEX.COM FOR LATEST PART INFORMATION