

**PLEASE CHECK WWW.MOLEX.COM FOR LATEST PART INFORMATION**

**Part Number:** [1501761020](#)  
**Status:** **Active**  
**Overview:** [EconoLatch Wire-to-Wire Interconnects](#)  
**Description:** [EconoLatch Plug Housing, Single Row, with Panel Mount Latch, 2 Circuits](#)

**Documents:**

<a href="#">3D Model</a>	<a href="#">Packaging Specification PK-150176-001-001 (PDF)</a>
<a href="#">Drawing (PDF)</a>	<a href="#">Test Summary 1501760001-TS-000 (PDF)</a>
<a href="#">Product Specification 1501760001-PS-000 (PDF)</a>	<a href="#">RoHS Certificate of Compliance (PDF)</a>
<a href="#">Application Specification 1501760001-AS-000 (PDF)</a>	<a href="#">Product Literature (PDF)</a>

**Agency Certification**

UL E29179

**General**

Product Family	Crimp Housings
Series	<a href="#">150176</a>
Application	Power, Wire-to-Wire
Overview	<a href="#">EconoLatch Wire-to-Wire Interconnects</a>
Product Literature Order No	987651-5541
Product Name	EconoLatch
UPC	889056490252

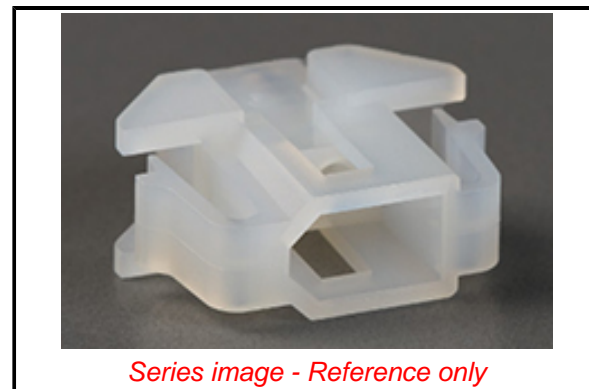
**Physical**

Circuits (maximum)	2
Color - Resin	Natural
Flammability	94V-2
Gender	Plug
Glow-Wire Capable	No
Keying to Mating Part	None
Lock to Mating Part	Yes
Material - Resin	Nylon
Net Weight	1.242/g
Number of Rows	1
Packaging Type	Bag
Panel Mount	Yes
Pitch - Mating Interface	3.68mm
Pitch - Termination Interface	3.68mm
Polarized to Mating Part	Yes
Stackable	No
Temperature Range - Operating	-40° to +105°C

**Material Info**

**Reference - Drawing Numbers**

Application Specification	1501760001-AS-000
Packaging Specification	PK-150176-001-001
Product Specification	1501760001-PS-000
Sales Drawing	SD-150176-001-000
Test Summary	1501760001-TS-000



*Series image - Reference only*

**EU ELV**

**Compliant**

**EU RoHS**

**Compliant**

**REACH SVHC**

Not Contained Per -  
ED/71/2019 (16 July  
2019)

**Halogen-Free**

**Status**

**Low-Halogen**

For more information, please visit [Contact US](#)

China ROHS

ELV

RoHS Phthalates

**China RoHS**

Green Image

Compliant

Not Contained

**Search Parts in this Series**

[150176 Series](#)

**Mates With**

EconoLatch Receptacle Housing [150178](#)

**Use With**

EconoLatch Male Terminal [150180](#)