



Heavy Duty Rectangular Connector Kits

Multi-pole Industrial Electrical Connectors commonly used in the following industries:

- Material Handling
- Injection Molding
- Transportation
- Automotive
- Robotics
- Factory Automation
- Machine Tools
- Wind & Solar Energy
- Power Generation
- Food Processing



*In Stock
Priced Right!*



ILME

For over 25 years, Mencom has manufactured industrial electrical connectors and has been the Master Distributor for ILME products in the U.S.

We constantly strive to provide excellent customer service with a full staff of product specialists to help you develop the best solution.



INDUSTRIA LOMBARDA MATERIALE ELETTRICO SpA has been operating in Milan since 1938, in particular in the electrotechnical sector for the manufacturing of equipment for industrial installations.

ILME reflects the traditional entrepreneurial spirit of Lombardy, and has enjoyed continuous expansion for over half a century. The company has carved an important role for itself in the main world markets, also operating directly in the countries that have assumed world leadership in the field of automation, including Germany and Japan. In the electrical connection sector with applications in industrial automation, characterized by top performance and utmost reliability needs, ILME is today the acknowledged partner of many leading companies worldwide.

The company's fundamental values are: product innovation, original solutions, excellent price-quality ratio, a customer oriented sense of service, ethical behaviour and an environmentally-friendly approach.

To promote the continuing improvement of its qualitative results, ILME has always encouraged its collaborators to work with utmost responsibility and participation. The company focuses on a series of benefits to the user, including research into the most suitable materials, high quality and safe cabling, a rapid turnaround and readily available services.

Connector Overview



This series of connectors was originally designed to handle electrical connections that are subject to harsh (heavy duty) environments. The usage of rectangular connectors has expanded to include applications where multiple lines need to be passed through the control cabinet.

In creating a solution it is important to consider your power and signal transmission needs as well as the environmental conditions. The electrical ratings can range from signal level up to 200A for high power requirements. Environmental conditions that may affect the electrical connection chosen include chemicals and other corrosive materials as well as high humidity or wash down. Likewise the frequency of connect/disconnect and general usage may play a role in determining the right connector.

In general, there are five different components that are required to make a complete connection.

- Hood
- Base
- Male Insert
- Female Insert
- Cable Gland

Enclosures -- Hoods & Bases



Enclosures are the combination of the base housing and the hood. The principal parts are made of a die cast aluminium alloy with a coating of epoxy-polyester powdercoat.

They are resistant to impacts and strong mechanical stress. The coupling stability and protection against accidental opening are assured by single or double-closing devices comprised of stainless steel levers, springs, and pegs. Sealing is assured by special gaskets that protect the contact groups inside the enclosure against dust & water. The first two features to look at when selecting your hood and base are housing size (10 pole, 16 pole, etc.)

and the position of the cable entry on the hood (top, side, front). Once these requirements are determined, the lever system can be chosen along with the thread of the cable entry. Mencom offers PG, Metric and NPT thread options.



Inserts

The Insert is the part of the connector that has the contacts. Inserts included on the following pages feature one of two conductor connection techniques: Screw Terminal or Tool-less Spring (aka Squich). Inserts are made of UL certified self-extinguishing fiberglass reinforced thermoplastics, and feature an operating temperature range between -40°C and +125°C. The contacts are in silver or gold plated brass. Inserts are numbered on both sides for accurate installation.



Cable Glands







Mencom offers a wide variety of cable glands, from small (PG7) to very large (M63). Our line of cable glands includes plastic and metal varieties with NPT, Metric and PG threading. In general, a cable gland is a device that allows the user to pass a cable, wire or tube into an enclosure. The gland provides strain relief and seals out dust, dirt and liquids. Mencom carries a large inventory of cable glands and accessories and most are rated IP68 while others are rated IP68 to 5 bar (underwater up to 5 atmospheres). With so many varieties, cable glands are sold separately from our kits.



3 & 4 Pole Kits

10A ❖ 600V

# of Poles	Kit #	Inserts		Housing			
		Male	Female	Base	Base Specs	Hood	Hood Specs
3 + 	KMNLT-03IV20	CKM-03	CKF-03	CK-03I	Plastic, w/Lever	MK-V20	Plastic, Top Entry
	KMNLT-03IO20	CKM-03	CKF-03	CK-03I	Plastic, w/Lever	MK-VA20	Plastic, Side Entry
+ 	KMNLS-03IV20	CKM-03	CKF-03	CKAX-03I	Metal, Stainless Lever	MKA-V20	Metal, Top Entry
	KMNLS-03IO20	CKM-03	CKF-03	CKAX-03I	Metal, Stainless Lever	MKA-VA20	Metal, Side Entry
4 + 	KMNLT-04IV20	CKM-04	CKF-04	CK-03I	Plastic, w/Lever	MK-V20	Plastic, Top Entry
	KMNLT-04IO20	CKM-04	CKF-04	CK-03I	Plastic, w/Lever	MK-VA20	Plastic, Side Entry
+ 	KMNLS-04IV20	CKM-04	CKF-04	CKAX-03I	Metal, Stainless Lever	MKA-V20	Metal, Top Entry
	KMNLS-04IO20	CKM-04	CKF-04	CKAX-03I	Metal, Stainless Lever	MKA-VA20	Metal, Side Entry

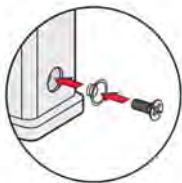
Each kit includes the base housing, male insert, female insert and hood. Hoods shown have M20 metric entry. PG & NPT threads also available. Cable gland sold separately. The 3 and 4 pole kits also include an optional washer kit as described below.

Specifications:

Screw Terminal Connections

Inserts for wires 26 - 14 AWG

Component Approvals: U.S.: UL Recognized
 Canada: C-UL Recognized
 IP 66/67 NEMA 4/4X/12
 (IP 44 without optional washer)
 CE



To obtain the protection rating IP66/IP67 a kit is provided that includes a screw and washer. The fixing screws supplied with the inserts must be removed and discarded and the new screw and washer must be installed (see illustration.)
 P/N CKR-65

KMNLS-04IV20:
 Inserts: CKM-04, CKF-04
 Base/Hood: CKAX-03I, MKA-V20



Spring Terminal - "Squich"

Connections Without Tools ❖ Available in Standard Sizes



The CSH series "Squich" with spring and actuator button is characterized by the following advantages:

- Reduced cabling time
- Tool-less connection
- Quick identification of cabled terminals
- Terminals already opened for clamping
- Wires with or without ferrule of up to 2.5mm

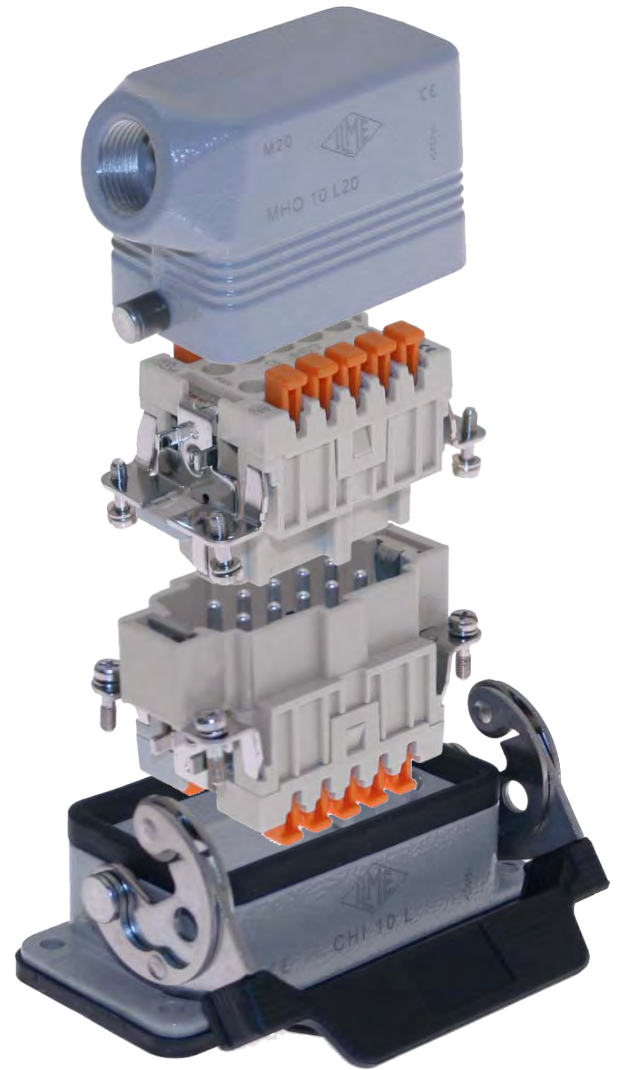
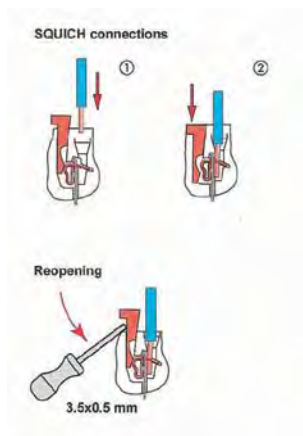
Save Time
Save Money



1. Insert the wire.



2. Press the button.



Shown (from top):
MHO-10L20, CSHF-10, CSHM-10, CHI-10L



6 Pole Kits

16A ❖ 600V

# of Poles	Kit #	Inserts		Size 44.27 - Aluminum Housing	
		Male	Female	Base	Hood
6 Single Lever	MNLS-06IO20 MNLS-06IO25 MNLS-06IOA32	Screw Terminal CNEM-06T CNEM-06T CNEM-06T	Screw Terminal CNEF-06T CNEF-06T CNEF-06T	Single Lever CHI-06L CHI-06L CHI-06L	Side Entry MHO-06L20 MHO-06L25 MAO-06L32 Top Entry MHV-06L20 MHV-06L25 MAV-06L32
	MNLS-06IV20 MNLS-06IV25 MNLS-06IVA32	CNEM-06T CNEM-06T CNEM-06T	CNEF-06T CNEF-06T CNEF-06T	CHI-06L CHI-06L CHI-06L	MHV-06L20 MHV-06L25 MAV-06L32
6 Single Lever	MQLS-06IO20 MQLS-06IO25 MQLS-06IOA32	Tool-less Spring CSHM-06 CSHM-06 CSHM-06	Tool-less Spring CSHF-06 CSHF-06 CSHF-06	Single Lever CHI-06L CHI-06L CHI-06L	Side Entry MHO-06L20 MHO-06L25 MAO-06L32 Top Entry MHV-06L20 MHV-06L25 MAV-06L32
	MQLS-06IV20 MQLS-06IV25 MQLS-06IVA32	CSHM-06 CSHM-06 CSHM-06	CSHF-06 CSHF-06 CSHF-06	CHI-06L CHI-06L CHI-06L	MHV-06L20 MHV-06L25 MAV-06L32

Each kit includes the base housing, male insert, female insert and hood. Hoods shown have metric entry (M20, M25, M32). PG & NPT threads also available. Cable gland sold separately.

Specifications:

Screw Terminal Connections
Inserts for wires 20-12 AWG

Tool-less Spring Connections
Inserts for wires 26-14 AWG

Component U.S.: UL Recognized
Approvals: Canada: C-UL Recognized
IP66 NEMA 4/4x/12
CE

MNLS-06IV25:
Inserts: CNEM-06T, CNEF-06T,
Base/Hood: CHI-06L, MHV-06L25



10 Pole Kits

16A ❖ 600V



# of Poles	Kit #	Inserts		Size 57.27 Aluminum Housing	
		Male	Female	Base	Hood
10 Single Lever	MNLS-10IO20	Screw Terminal CNEM-10T	Screw Terminal CNEF-10T	Single Lever CHI-10L	Side Entry MHO-10L20
	MNLS-10IO25	CNEM-10T	CNEF-10T	CHI-10L	MHO-10L25
	MNLS-10IOA32	CNEM-10T	CNEF-10T	CHI-10L	MAO-10L32
	MNLS-10IV20	CNEM-10T	CNEF-10T	CHI-10L	Top Entry MHV-10L20
	MNLS-10IV25	CNEM-10T	CNEF-10T	CHI-10L	MHV-10L25
	MNLS-10IVA32	CNEM-10T	CNEF-10T	CHI-10L	MAV-10L32
10 Single Lever	MQLS-10IO20	Tool-less Spring CSHM-10	Tool-less Spring CSHF-10	Single Lever CHI-10L	Side Entry MHO-10L20
	MQLS-10IO25	CSHM-10	CSHF-10	CHI-10L	MHO-10L25
	MQLS-10IOA32	CSHM-10	CSHF-10	CHI-10L	MAO-10L32
	MQLS-10IV20	CSHM-10	CSHF-10	CHI-10L	Top Entry MHV-10L20
	MQLS-10IV25	CSHM-10	CSHF-10	CHI-10L	MHV-10L25
	MQLS-10IVA32	CSHM-10	CSHF-10	CHI-10L	MAV-10L32
10 Double Lever	MNDS-10IO20	Screw Terminal CNEM-10T	Screw Terminal CNEF-10T	Double Lever CHI-10	Side Entry MHO-10.20
	MNDS-10IO25	CNEM-10T	CNEF-10T	CHI-10	MHO-10.25
	MNDS-10IOA32	CNEM-10T	CNEF-10T	CHI-10	MAO-10.32
	MNDS-10IV20	CNEM-10T	CNEF-10T	CHI-10	Top Entry MHV-10.20
	MNDS-10IV25	CNEM-10T	CNEF-10T	CHI-10	MHV-10.25
	MNDS-10IVA32	CNEM-10T	CNEF-10T	CHI-10	MAV-10.32
10 Double Lever	MQDS-10IO20	Tool-less Spring CSHM-10	Tool-less Spring CSHF-10	Double Lever CHI-10	Side Entry MHO-10.20
	MQDS-10IO25	CSHM-10	CSHF-10	CHI-10	MHO-10.25
	MQDS-10IOA32	CSHM-10	CSHF-10	CHI-10	MAO-10.32
	MQDS-10IV20	CSHM-10	CSHF-10	CHI-10	Top Entry MHV-10.20
	MQDS-10IV25	CSHM-10	CSHF-10	CHI-10	MHV-10.25
	MQDS-10IVA32	CSHM-10	CSHF-10	CHI-10	MAV-10.32

Each kit includes the base housing, male insert, female insert and hood. Hoods shown have metric entry (M20, M25, M32). PG & NPT threads also available. Cable gland sold separately.

Specifications:

Screw Terminal Connections
Inserts for wires 20-12 AWG

Tool-less Spring Connections
Inserts for wires 26-14 AWG

Component Approvals: U.S.: UL Recognized
Canada: C-UL Recognized
IP66 NEMA 4/4x/12
CE

MQLS-10IO20:
Inserts: CSHM-10, CSHF-10,
Base/Hood: CHI-10L, MHO-10L20





16 Pole Kits

16A ❖ 600V

# of Poles	Kit #	Inserts		Size 77.27 - Aluminum Housing	
		Male	Female	Base	Hood
16 Single Lever	MNLS-16IO25 MNLS-16IO32 MNLS-16IOA40	Screw Terminal CNEM-16T CNEM-16T CNEM-16T	Screw Terminal CNEF-16T CNEF-16T CNEF-16T	Single Lever CHI-16L CHI-16L CHI-16L	Side Entry MHO-16L25 MHO-16L32 MAO-16L40 Top Entry MHV-16L25 MHV-16L32 MAV-16L40
	MNLS-16IV25 MNLS-16IV32 MNLS-16IVA40	CNEM-16T CNEM-16T CNEM-16T	CNEF-16T CNEF-16T CNEF-16T	CHI-16L CHI-16L CHI-16L	MHV-16L25 MHV-16L32 MAV-16L40
16 Single Lever	MQLS-16IO25 MQLS-16IO32 MQLS-16IOA40	Tool-less Spring CSHM-16 CSHM-16 CSHM-16	Tool-less Spring CSHF-16 CSHF-16 CSHF-16	Single Lever CHI-16L CHI-16L CHI-16L	Side Entry MHO-16L25 MHO-16L32 MAO-16L40 Top Entry MHV-16L25 MHV-16L32 MAV-16L40
	MQLS-16IV25 MQLS-16IV32 MQLS-16IVA40	CSHM-16 CSHM-16 CSHM-16	CSHF-16 CSHF-16 CSHF-16	CHI-16L CHI-16L CHI-16L	MHV-16L25 MHV-16L32 MAV-16L40
16 Double Lever	MNDS-16IO25 MNDS-16IO32 MNDS-16IOA40	Screw CNEM-16T CNEM-16T CNEM-16T	Screw CNEF-16T CNEF-16T CNEF-16T	Double Lever CHI-16 CHI-16 CHI-16	Side Entry MHO-16.25 MHO-16.32 MAO-16.40 Top Entry MHV-16.25 MHV-16.32 MAV-16.40
	MNDS-16IV25 MNDS-16IV32 MNDS-16IVA40	CNEM-16T CNEM-16T CNEM-16T	CNEF-16T CNEF-16T CNEF-16T	CHI-16 CHI-16 CHI-16	MHV-16.25 MHV-16.32 MAV-16.40
16 Double Lever	MQDS-16IO25 MQDS-16IO32 MQDS-16IOA40	Tool-less Spring CSHM-16 CSHM-16 CSHM-16	Tool-less Spring CSHF-16 CSHF-16 CSHF-16	Double Lever CHI-16 CHI-16 CHI-16	Side Entry MHO-16.25 MHO-16.32 MAO-16.40 Top Entry MHV-16.25 MHV-16.32 MAV-16.40
	MQDS-16IV25 MQDS-16IV32 MQDS-16IVA40	CSHM-16 CSHM-16 CSHM-16	CSHF-16 CSHF-16 CSHF-16	CHI-16 CHI-16 CHI-16	MHV-16.25 MHV-16.32 MAV-16.40

Each kit includes the base housing, male insert, female insert and hood. Hoods shown have metric entry (M25, M32, M40). PG & NPT threads also available. Cable gland sold separately.

Specifications:

Screw Terminal Connections
Inserts for wires 20-12 AWG

Tool-less Spring Connections
Inserts for wires 26-14 AWG

Component Approvals: U.S.: UL Recognized
Canada: C-UL Recognized
IP66 NEMA 4/4x/12
CE

MNDS-16IV25:
Inserts: CNEM-16T, CNEF-16T,
Base/Hood: CHI-16, MHV-16.25



24 Pole Kits

16A ❖ 600V



# of Poles	Kit #	Inserts		Size 104.27 - Aluminum Housing	
		Male	Female	Base	Hood
24 Single Lever	MNLS-24IO25 MNLS-24IO32 MNLS-24IOA40	Screw Terminal CNEM-24T CNEM-24T CNEM-24T	Screw Terminal CNEF-24T CNEF-24T CNEF-24T	Single Lever CHI-24L CHI-24L CHI-24L	Side Entry MHO-24L25 MHO-24L32 MAO-24L40 Top Entry MHV-24L25 MHV-24L32 MAV-24L40
	MNLS-24IV25 MNLS-24IV32 MNLS-24IVA40	CNEM-24T CNEM-24T CNEM-24T	CNEF-24T CNEF-24T CNEF-24T	CHI-24L CHI-24L CHI-24L	MHO-24L25 MHO-24L32 MAO-24L40 MHV-24L25 MHV-24L32 MAV-24L40
24 Single Lever	MQLS-24IO25 MQLS-24IO32 MQLS-24IOA40	Tool-less Spring CSHM-24 CSHM-24 CSHM-24	Tool-less Spring CSHF-24 CSHF-24 CSHF-24	Single Lever CHI-24L CHI-24L CHI-24L	Side Entry MHO-24L25 MHO-24L32 MAO-24L40 Top Entry MHV-24L25 MHV-24L32 MAV-24L40
	MQLS-24IV25 MQLS-24IV32 MQLS-24IVA40	CSHM-24 CSHM-24 CSHM-24	CSHF-24 CSHF-24 CSHF-24	CHI-24L CHI-24L CHI-24L	MHO-24L25 MHO-24L32 MAO-24L40 MHV-24L25 MHV-24L32 MAV-24L40
24 Double Lever	MNDS-24IO25 MNDS-24IO32 MNDS-24IOA40	Screw Terminal CNEM-24T CNEM-24T CNEM-24T	Screw Terminal CNEF-24T CNEF-24T CNEF-24T	Double Lever CHI-24 CHI-24 CHI-24	Side Entry MHO-24.25 MHO-24.32 MAO-24.40 Top Entry MHV-24.25 MHV-24.32 MAV-24.40
	MNDS-24IV25 MNDS-24IV32 MNDS-24IVA40	CNEM-24T CNEM-24T CNEM-24T	CNEF-24T CNEF-24T CNEF-24T	CHI-24 CHI-24 CHI-24	MHO-24.25 MHO-24.32 MAO-24.40 MHV-24.25 MHV-24.32 MAV-24.40
24 Double Lever	MQDS-24IO25 MQDS-24IO32 MQDS-24IOA40	Tool-less Spring CSHM-24 CSHM-24 CSHM-24	Tool-less Spring CSHF-24 CSHF-24 CSHF-24	Double Lever CHI-24 CHI-24 CHI-24	Side Entry MHO-24.25 MHO-24.32 MAO-24.40 Top Entry MHV-24.25 MHV-24.32 MAV-24.40
	MQDS-24IV25 MQDS-24IV32 MQDS-24IVA40	CSHM-24 CSHM-24 CSHM-24	CSHF-24 CSHF-24 CSHF-24	CHI-24 CHI-24 CHI-24	MHO-24.25 MHO-24.32 MAO-24.40 MHV-24.25 MHV-24.32 MAV-24.40

Each kit includes the base housing, male insert, female insert and hood. Hoods shown have metric entry (M25, M32, M40). PG & NPT threads also available. Cable gland sold separately.

Specifications:

Screw Terminal Connections
Inserts for wires 20-12 AWG

Tool-less Spring Connections
Inserts for wires 26-14 AWG

Component U.S.: UL Recognized
Approvals: Canada: C-UL Recognized
IP66 NEMA 4/4x/12
CE

MQLS-24IV32:
Inserts: CSHM-24, CSHF-24,
Base/Hood: CHI24L, MHV-24L32





Cable Glands & Alternative Kit Components

Cable Glands, sold separately, are required to complete your heavy-duty assembly. Below are the cable glands that fit the hoods shown in our kits. Other options are available; please call for more information.

MCG-M20



MCG-M25



MCG-M32



MCG-M40



Mencom carries alternatives to meet your project requirements. Whether you are looking for an insulated solution (T-type) or a connector that will be in used in an aggressive environment (W-Type), we have the combination you need.

Alternative Enclosures

T-type: Thermoplastic



EMC: Electromagnetic Capacity



180°C: Harsh Environment



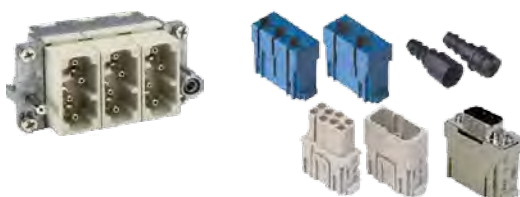
BIG: Larger Capacity



W-type: Aggressive Environment

Alternative Inserts

MIXO - Modular Inserts



Crimp Termination



Mencom Products

Cordsets/Receptacles



Panel Interface Connectors



Ethernet/Network



D-Sub Minis
Guaranteed Color Code



Field Wireables



Solenoid Valve
Connectors



Armored Cordsets



Cable Glands & Adapters



Junction Blocks



Mencom is the Master Distributor in the U.S. for ILME products.

Other Mencom Products

Cordsets & Receptacles
Panel Interface Connectors
Network Cables
Junction Blocks
Solenoid Valve Connectors
Cable Glands

150,000 sq. ft. Production and Warehousing Facility



Mencom Corporation

5750 McEver Road, Oakwood, Georgia 30566
U.S.A.

1-770-534-4585

www.mencom.com