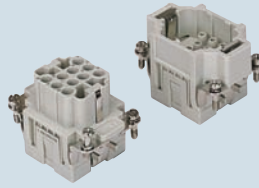


enclosures:  
size "44.27" page:

**C-TYPE IP65/IP66** ..... 240 - 243  
**C7 IP67, single lever** ..... 274  
**V-TYPE IP65/IP66, single lever** 280/284 - 286  
**BIG hoods** ..... 304 - 306  
**T-TYPE IP65 insulating** ..... 326 - 327  
**T-TYPE / W IP66 insulating** ..... 336 - 337  
**HYGIENIC T-TYPE / H IP66/IP69** ..... 350 - 351  
**HYGIENIC T-TYPE / C IP66/IP69, -50 °C** 358 - 359  
**W-TYPE for aggressive environments** ..... 373  
**EMC** ..... 392  
**central lever** ..... 404 - 405  
**IP68** ..... 420 - 423  
**LS-TYPE** ..... 450 - 451

panel supports: page:  
**COB** ..... 462 - 463

**inserts, crimp connections**



**16A crimp contacts normal and for advanced opening silver and gold plated**

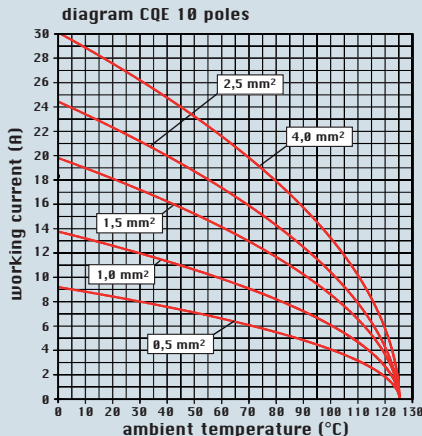


description	part No.	part No.	part No.
without contacts (to be ordered separately) female inserts for female contacts male inserts for male contacts	<b>CQEF 10</b> <b>CQEM 10</b>		
<b>16A female contacts</b> 0,14-0,37 mm <sup>2</sup> AWG 26-22 three grooves 0,5 mm <sup>2</sup> AWG 20 with no grooves 0,75 mm <sup>2</sup> AWG 18 one groove (back side) 1 mm <sup>2</sup> AWG 18 one groove 1,5 mm <sup>2</sup> AWG 16 two grooves 2,5 mm <sup>2</sup> AWG 14 three grooves 3 mm <sup>2</sup> AWG 12 one wide groove 4 mm <sup>2</sup> AWG 12 with no grooves		<b>CCFA 0.3</b> <b>CCFA 0.5</b> <b>CCFA 0.7</b> <b>CCFA 1.0</b> <b>CCFA 1.5</b> <b>CCFA 2.5</b> <b>CCFA 3.0</b> <b>CCFA 4.0</b>	<b>CCFD 0.3</b> <b>CCFD 0.5</b> <b>CCFD 0.7</b> <b>CCFD 1.0</b> <b>CCFD 1.5</b> <b>CCFD 2.5</b> <b>CCFD 3.0</b> <b>CCFD 4.0</b>
<b>16A male contacts</b> 0,14-0,37 mm <sup>2</sup> AWG 26-22 three grooves 0,5 mm <sup>2</sup> AWG 20 with no grooves 0,75 mm <sup>2</sup> AWG 18 one groove (back side) 1 mm <sup>2</sup> AWG 18 one groove 1,5 mm <sup>2</sup> AWG 16 two grooves 2,5 mm <sup>2</sup> AWG 14 three grooves 3 mm <sup>2</sup> AWG 12 one wide groove 4 mm <sup>2</sup> AWG 12 with no grooves		<b>CCMA 0.3</b> <b>CCMA 0.5</b> <b>CCMA 0.7</b> <b>CCMA 1.0</b> <b>CCMA 1.5</b> <b>CCMA 2.5</b> <b>CCMA 3.0</b> <b>CCMA 4.0</b>	<b>CCMD 0.3</b> <b>CCMD 0.5</b> <b>CCMD 0.7</b> <b>CCMD 1.0</b> <b>CCMD 1.5</b> <b>CCMD 2.5</b> <b>CCMD 3.0</b> <b>CCMD 4.0</b>
<b>16A male crimp contacts for advanced opening</b> 0,5 mm <sup>2</sup> AWG 20 with no grooves 0,75 mm <sup>2</sup> AWG 18 one groove (back side) 1 mm <sup>2</sup> AWG 18 one groove 1,5 mm <sup>2</sup> AWG 16 two grooves 2,5 mm <sup>2</sup> AWG 14 three grooves		<b>CC 0.5 AN</b> <b>CC 0.7 AN</b> <b>CC 1.0 AN</b> <b>CC 1.5 AN</b> <b>CC 2.5 AN</b>	

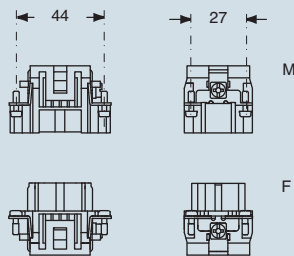
silver plated

gold plated 1)

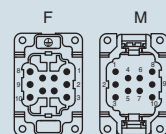
- characteristics according to EN 61984:  
**16A 500V 6kV 3**  
**16A 830V 8kV 2**
- cUL - UL for USA and Canada, CSA, GL, EAC certified
- rated voltage according to UL/CSA: 600V
- insulation resistance: ≥ 10 GΩ
- ambient temperature limit: -40 °C ... +125 °C
- are made of self-extinguishing thermoplastic resin UL 94 V0
- mechanical life: ≥ 500 cycles
- contact resistance: ≤ 1 mΩ
- for maximum current load, see the following load curves inserts, for more information see page 561



**dimensions in mm**

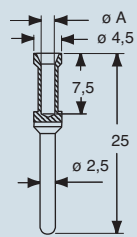


**contacts side (front view)**

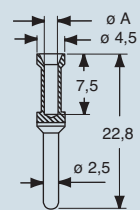


**dimensions in mm**

**CCF and CCM**



**CC...AN**



**CCF, CCM and CC...AN contacts**

conductor section	conductor slot	conductors stripping length
mm <sup>2</sup>	ø A (mm)	(mm)
0,14-0,37	0,9	7,5
0,5	1,1	7,5
0,75	1,3	7,5
1,0	1,45	7,5
1,5	1,8	7,5
2,5	2,2	7,5
3	2,55	7,5
4	2,85	7,5

1) basic or high thickness gold plating page 481

- for contact crimping instructions, please see the crimping tool section (16A contacts, CCF, CCM and CC...AN series) on pages 534, 538, 544, 546, 548

dimensions shown are not binding and may be changed without notice