

Product designation				Power contactor
Product type designation				DPBF26
<b>Contact characteristics</b>				
Number of poles		Nr.	3	
Operational frequency	min	Hz	25	
	max	Hz	400	
<b>Mechanical features</b>				
Operating position	normal allowable		Vertical plan ±30°	
Fixing				Screw / DIN rail 35mm
Weight	g			556
<b>Operations</b>				
Mechanical life	cycles			20000000
Electrical life	cycles			1600000
<b>Safety related data</b>				
Performance level B10d according to EN/ISO 13489-1	rated load mechanical load	cycles	1600000	
		cycles	20000000	
Mirror contacts according to IEC/EN 609474-4-1				yes
EMC compatibility				yes
<b>AC coil operating</b>				
Rated AC voltage at 60Hz	V			575
AC operating voltage	of 50/60Hz coil powered at 50Hz drop-out			
	max	%Us	0	
	of 60Hz coil powered at 60Hz pick-up			
	min	%Us	80	
	max	%Us	110	
	drop-out			
	min	%Us	20	
	max	%Us	55	
AC average coil consumption at 20°C	of 60Hz coil powered at 60Hz			
	in-rush holding	VA	75	
		VA	9	
Dissipation at holding ≤20°C 50Hz	W			2.5
<b>DC coil operating</b>				
DC rated control voltage	V			24
DC operating voltage	pick-up			
	min	%Us	70	
	max	%Us	125	
	drop-out			
	min	%Us	10	
	max	%Us	40	
Average coil consumption ≤20°C	in-rush holding	W	5.4	
		W	5.4	

**Max cycles frequency**

Mechanical operation cycles/h 3600

**Operating times**

Average time for Us control  
in AC

Closing NO	min	ms	8
	max	ms	24
Opening NO	min	ms	5
	max	ms	15
Closing NC	min	ms	9
	max	ms	20
Opening NC	min	ms	9
	max	ms	17

in DC

Closing NO	min	ms	54
	max	ms	66
Opening NO	min	ms	14
	max	ms	17

**UL technical data**

Full-load current (FLA) for three-phase AC motor

at 600V    A    40

Yielded mechanical performance

for single-phase AC motor

110/120V	HP	3
230V	HP	7.5

for three-phase AC motor

200/208V	HP	10
220/230V	HP	10
460/480V	HP	30
575/600V	HP	30

**General USE**

Contactor

AC current    A    45

Short-circuit protection fuse, 600V

Standard fault

Short circuit current	kA	5
Fuse rating	A	125
Fuse class		RK5

**Ambient conditions**

Temperature

Operating temperature

min	°C	-50
max	°C	70

Storage temperature

min	°C	-60
max	°C	80

Max altitude

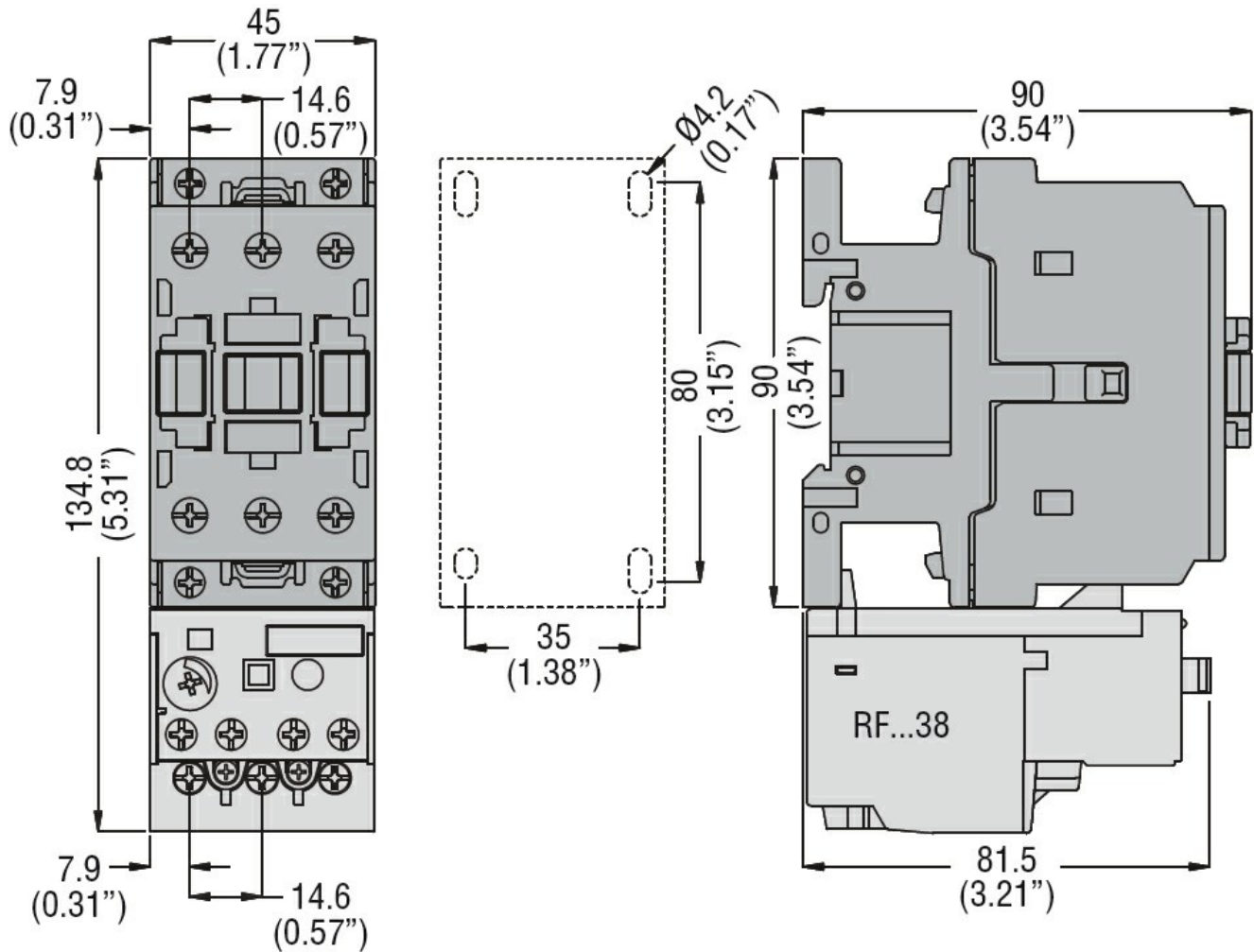
m    3000

**Resistance & Protection**

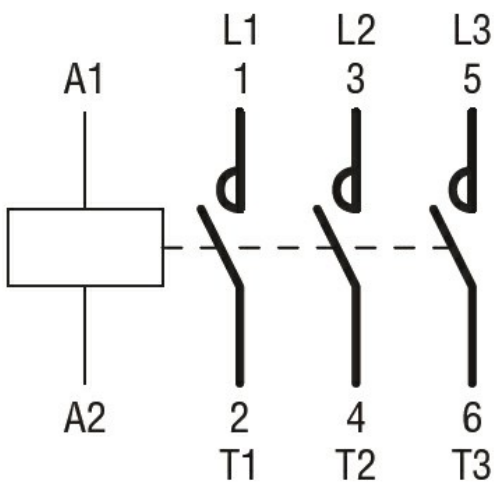
Pollution degree

3

Dimensions



Wiring diagrams



Certifications and compliance

Compliance

CSA C22.2 n° 60947-1  
CSA C22.2 n° 60947-4-48  
UL 60947-1

---

UL 60947-4-1

---

Certificates

cULus

ETIM classification

ETIM 8.0

EC000066 -  
Power contactor,  
AC switching