



|   |                 |               |          |                          |
|---|-----------------|---------------|----------|--------------------------|
| Product designation   |                 |               |          | Power contactor          |
| Product type designation  |                 |               |          | DPBF09                   |
| <b>Contact characteristics</b>                                      |                 |               |          |                          |
| Number of poles   | Nr.             |               |          | 3                        |
| Operational frequency   | min             | Hz            | 25       |                          |
|   | max             | Hz            | 400      |                          |
| <b>Mechanical features</b>  |                 |               |          |                          |
| Operating position  | normal          | Vertical plan |          |                          |
|   | allowable       | ±30°          |          |                          |
| Fixing  |                 |               |          | Screw / DIN rail<br>35mm |
| Weight  | g               | 356           |          |                          |
| <b>Operations</b>   |                 |               |          |                          |
| Mechanical life   | cycles          | 20000000      |          |                          |
| Electrical life   | cycles          | 2000000       |          |                          |
| <b>Safety related data</b>  |                 |               |          |                          |
| Performance level B10d according to EN/ISO 13489-1                  | rated load      | cycles        | 2000000  |                          |
|   | mechanical load | cycles        | 20000000 |                          |
| Mirror contacts according to IEC/EN 60947-4-1                       |                 |               |          | yes                      |
| EMC compatibility   |                 |               |          | yes                      |
| <b>AC coil operating</b>  |                 |               |          |                          |
| Rated AC voltage at 60Hz  | V               | 120           |          |                          |
| AC operating voltage<br>of 60Hz coil powered at 60Hz                | pick-up         | min           | %Us      | 80                       |
|   |                 | max           | %Us      | 110                      |
|   | drop-out        | min           | %Us      | 20                       |
|   |                 | max           | %Us      | 55                       |
| AC average coil consumption at 20°C<br>of 60Hz coil powered at 60Hz | in-rush         | VA            | 75       |                          |
|   | holding         | VA            | 9        |                          |
| Dissipation at holding ≤20°C 50Hz                                   | W               | 2.5           |          |                          |
| <b>Max cycles frequency</b>   |                 |               |          |                          |
| Mechanical operation  | cycles/h        | 3600          |          |                          |
| <b>Operating times</b>  |                 |               |          |                          |
| Average time for Us control<br>in AC                                | Closing NO      | min           | ms       | 8                        |

|            |     |    |    |
|------------|-----|----|----|
| Opening NO | max | ms | 24 |
|            | min | ms | 10 |
| Closing NC | max | ms | 20 |
|            | min | ms | 14 |
| Opening NC | max | ms | 28 |
|            | min | ms | 7  |
|            | max | ms | 18 |

**UL technical data**

Full-load current (FLA) for three-phase AC motor

at 600V    A    20

Yielded mechanical performance

for single-phase AC motor

110/120V    HP    1.5  
230V    HP    3

for three-phase AC motor

200/208V    HP    5  
220/230V    HP    5  
460/480V    HP    10  
575/600V    HP    15

General USE

Contactor

AC current    A    25

Auxiliary contacts

AC voltage    V    600  
AC current    A    10  
DC voltage    V    250  
DC current    A    1

Short-circuit protection fuse, 600V

Standard fault

Short circuit current    kA    5  
Fuse rating    A    70  
Fuse class    RK5

Contact rating of auxiliary contacts according to UL

A600 - P600

**Ambient conditions**

Temperature

Operating temperature

min    °C    -50  
max    °C    70

Storage temperature

min    °C    -60  
max    °C    80

Max altitude

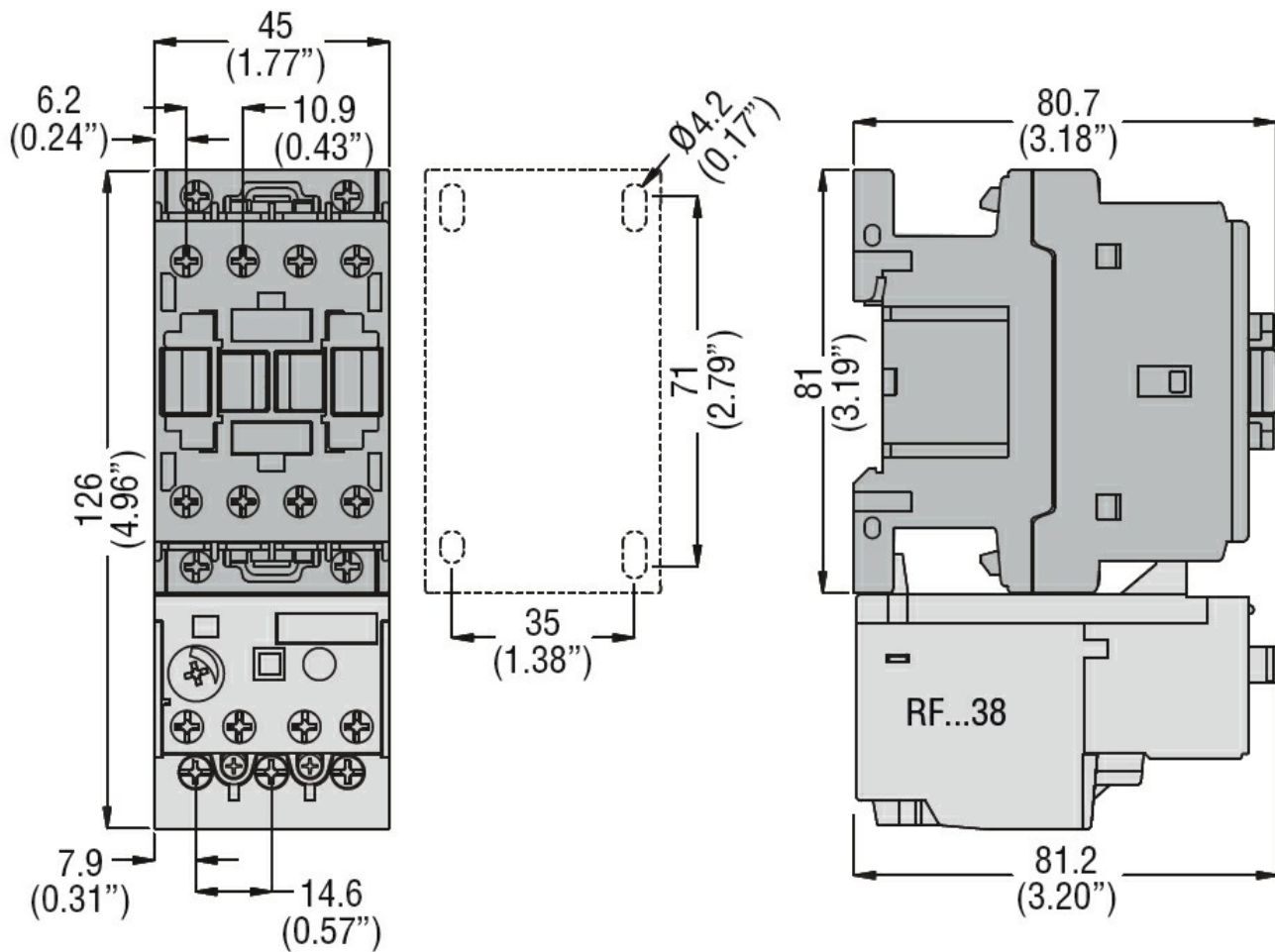
m    3000

**Resistance & Protection**

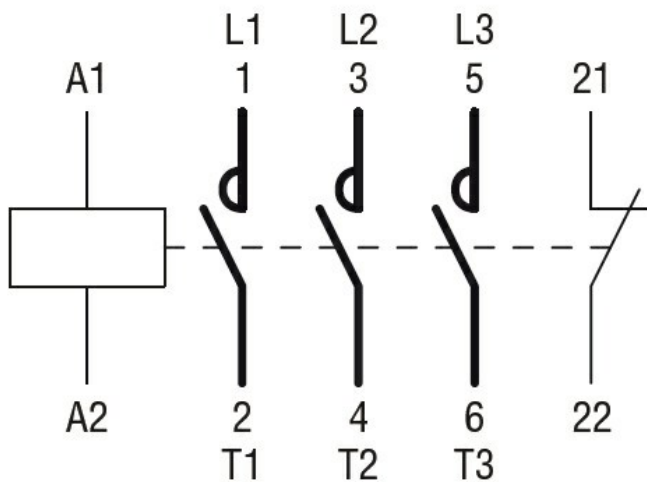
Pollution degree

3

**Dimensions**



**Wiring diagrams**



**Certifications and compliance**

**Compliance**

- CSA C22.2 n° 60947-1
- CSA C22.2 n° 60947-4-3
- UL 60947-1
- UL 60947-4-1

**Certificates**

cULus

**ETIM classification**

ETIM 8.0

EC000066 -  
Power contactor,  
AC switching