



Product designation				Power contactor
Product type designation				BF26
Contact characteristics				
Number of poles	nr.			3
Rated insulation voltage U _i IEC/EN	V			690
Rated impulse withstand voltage U _{imp}	kV			6
Operational frequency	min	Hz		25
	max	Hz		400
Conventional free air thermal current I _{th} IEC/EN	A			45
Operational current I _e	AC-1 (≤40°C)	A		45
	AC-3 (≤440V ≤55°C)	A		26
	AC-4 (400V)	A		11.5
Rated operational power AC-1 (T≤40°C)	230V	kW		17
	400V	kW		30
	500V	kW		37
	690V	kW		51
Rated operational power AC-3 (T≤55°C)	230V	kW		7.3
	400V	kW		13
	415V	kW		14
	440V	kW		14
	500V	kW		15.6
	690V	kW		18.5
Short-time allowable current for 10s (IEC/EN60947-1)	A			210
Protection fuse	gG (IEC)	A		50
	aM (IEC)	A		32
Making capacity (RMS value)	A			260
Breaking capacity at voltage	440V	A		208
	500V	A		184
	690V	A		168
Resistance per pole (average value)	mΩ			2
Power dissipation per pole (average value)	I _{th}	W		4
	AC3	W		1.4
Tightening torque for terminals	min	Nm		2.5
	max	Nm		3
	min	lbin		1.8
	max	lbin		2.2
Tightening torque for coil terminal				

		min	Nm	0.8
		max	Nm	1
		min	lbft	0.8
		max	lbft	0.74
Max number of wires simultaneously connectable			nr.	2
Conductor section	AWG			
		/kcmil min		14
		/kcmil max		6
Flexible w/o lug conductor section		min	mm ²	2.5
		max	mm ²	16
Flexible c/w lug conductor section		min	mm ²	1
		max	mm ²	10
Flexible with insulated spade lug conductor section		min	mm ²	1
		max	mm ²	10
Power terminal protection according to IEC/EN 60529				IP20 when wired
Auxiliary contact characteristics				
Operational current I _e AC-1 (≤40°C)			A	45
Operating current DC13		110V	A	Screw / DIN rail 35mm
Ambient conditions				
Temperature	Operating temperature	min	°C	-50
		max	°C	70
	Storage temperature	min	°C	-60
		max	°C	80
Max altitude			m	3000
Operational position	Operating position normal			Vertical plan
	Operating position allowable			±30°
Fixing				Screw / DIN rail 35mm
Weight			g	0.424
Operations				
Mechanical life			Cycles	20000000
Electrical life			Cycles	1600000
Safety related data				
Performance level B10d according to EN/ISO 13489-1		rated load	Cicli	1600000
		mechanical load	Cicli	20000000
Mirror contacts according to IEC/EN 60947-4-1				yes
EMC compatibility				yes
AC coil operating				
AC operating voltage	of 50/60Hz coil powered at 50Hz			
	pick-up	min	%U _s	0.8

		max	%Us	1.1	
	drop-out	min	%Us	0.2	
		max	%Us	0.55	
of 50/60Hz coil powered at 60Hz					
	pick-up	min	%Us	0.85	
		max	%Us	1.1	
	drop-out	min	%Us	0.2	
		max	%Us	0.55	
of 60Hz coil powered at 60Hz					
	pick-up	min	%Us	0.8	
		max	%Us	1.1	
	drop-out	min	%Us	0.2	
		max	%Us	0.55	
AC operating voltage					
of 50/60Hz coil powered at 50Hz					
		in-rush	VA	75	
		holding	VA	9	
of 50/60Hz coil powered at 60Hz					
		in-rush	VA	70	
		holding	VA	6.5	
of 60Hz coil powered at 60Hz					
		in-rush	VA	75	
		holding	VA	9	
Dissipation at holding $\leq 20^{\circ}\text{C}$ 50Hz			W	2.5	
Max cycles frequency					
Mechanical operations			Cycles/h	3600	
Operating times					
Average time for Us control					
in AC					
Closing NO					
		min	ms	8	
		max	ms	24	
Opening NO					
		min	ms	5	
		max	ms	15	
UL technical data					
Full-load current (FLA) for three-phase AC motor					
		at 480V	A	21	
		at 600V	A	22	
Yielded mechanical performance for					
for single-phase AC motor					
	Yielded mechanical performance 110/120V			hp	2
	Yielded mechanical performance 230V			hp	5
for three-phase AC motor					
	Yielded mechanical performance 200/208V			hp	7.5
	Yielded mechanical performance 220/230V			hp	7.5
	Yielded mechanical performance 460/480V			hp	15
	Yielded mechanical performance 575/600V			hp	20
General USE					

Contactor

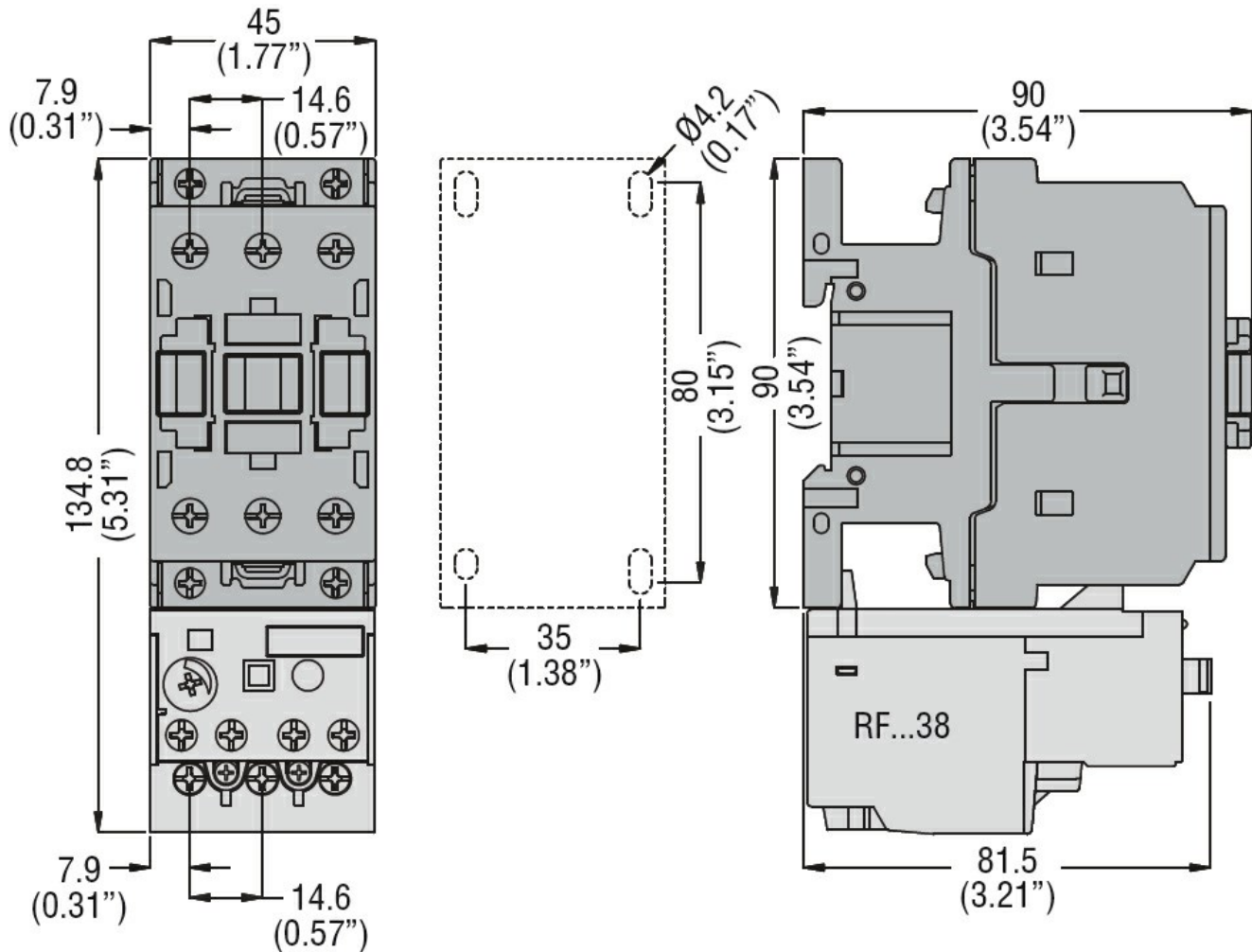
AC current A 32

Other features

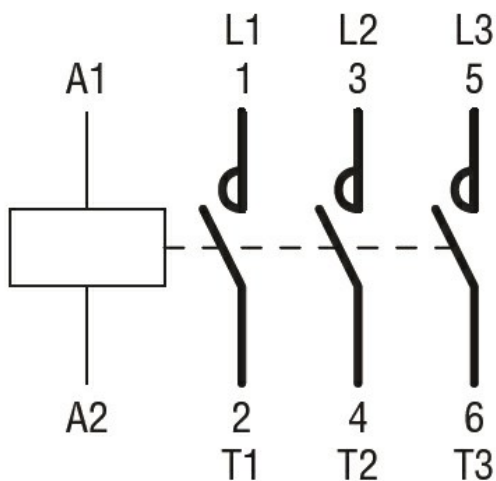
Pollution degree

3

Dimensions



Wiring diagrams



Certifications and compliance

Certifications

CSA C22.2 n° 60947-1

CSA C22.2 n° 60947-4-1

IEC/EN 60947-1

IEC/EN 60947-4-1

UL 60947-1

UL 60947-4-1

Compliance

CCC

cULus

EAC

ETIM 6 classification

EC000066 - Power contactor, AC switching