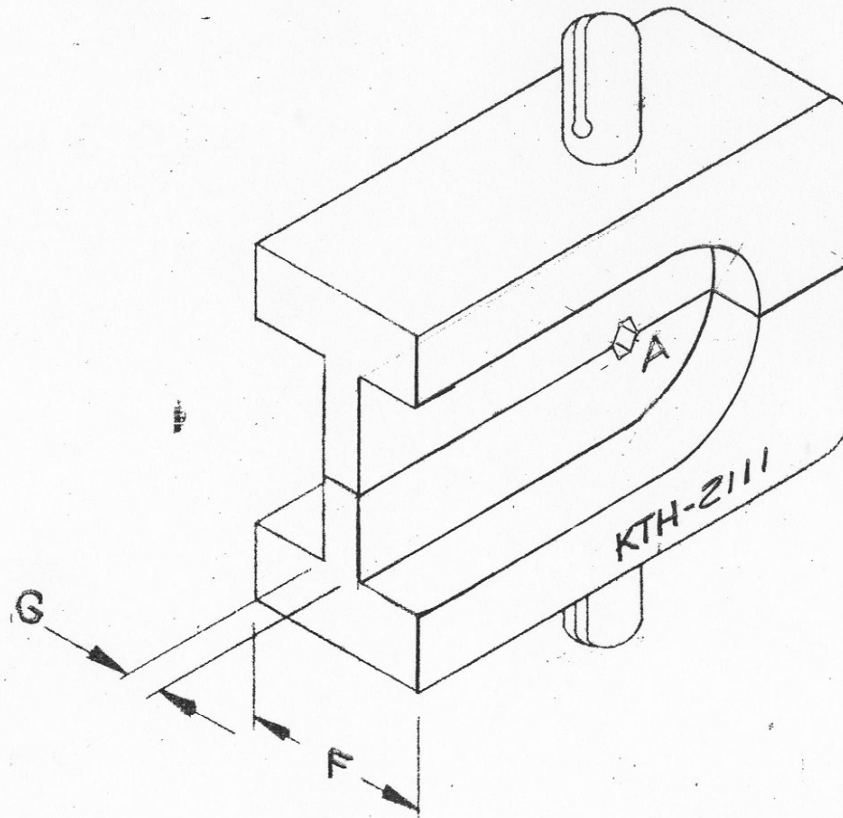


REVISIONS

ISSUE	CHANGES
1.	CN-16607C WEB WAS .093 TH'K. LI 2DEC76



REF:

FINISH

SPEC.

MATL.

SPEC.

HEX SIZES (ACROSS FLATS)				DIE WIDTH	WEB WIDTH		
A	B	C	D	F	G	H	I
.069	—	—	—	.400	.080		

CRIMP DIE

DRAWN JHP DATE 15 NOV 76

APPR. [Signature] DATE 18 NOV 76

UNLESS OTHERWISE SPECIFIED:

1. TOLERANCES: FRACTIONS & 2 PLACE DECIMALS  $\pm .010$   
3 PLACE DECIMALS  $\pm .004$  ANGLES  $\pm 0^\circ 30'$
2. REMOVE ALL BURRS, BREAK SHARP EDGES .005 MAX.
3. NO FILLETS PERMITTED.
4. SURFACE ROUGHNESS 63 MICROINCHES RMS MAX.
5. ALL DIMENSIONS PRIOR TO PLATING.

KINGS ELECTRONICS  
40 MARBLEDALE ROAD  
TUCKAHOE, N. Y. 10707

KTH-2111