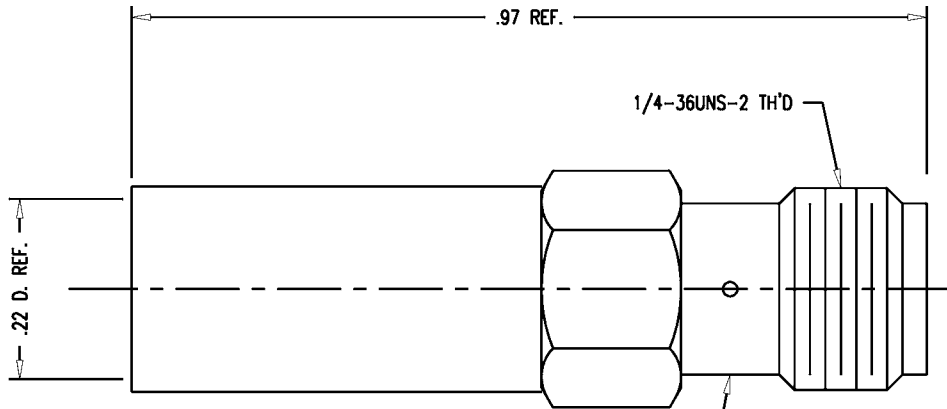
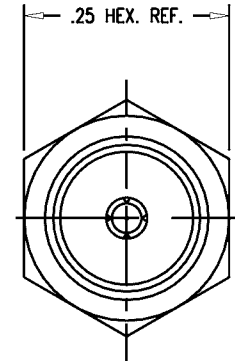


GSD

M39012/57-3502



STAMP: 91836 M39012/57-3502 XX XX (DATE CODE)



NOTES:

1. FOR USE WITH M17/60-RG142 AND M17/128-RG400 CABLES.
2. FOR CABLING INSTRUCTIONS SEE CP-493.
3. FOR TRIMMING USE KTJ-169 AND KTD-215.
4. FOR CRIMPING USE DIE KTH-2113.
5. INTERFACE PER MIL-STD-348, FIG. 310-1.
6. MARK PACKAGE: 91836 M39012/57-3502 873-18-3 XXXX (DATE CODE)
7. MATERIALS:
 INSULATOR-TEFLON, ASTM-D-4894
 K-GRIP SLEEVE-COMMERCIAL BRONZE, ASTM-B-135
 ALL OTHER METAL PARTS-BER. COP., ASTM-B-196
8. FINISHES:
 BODY-PASSIVATE PER QQ-P-35
 K-GRIP SLEEVE-KINGS TARNISH RESISTANT FINISH (TR-5)
 CENTER CONTACT-GOLD PLATE PER MIL-G-45204
9. ELECTRICAL CHARACTERISTICS:
 NOMINAL IMPEDANCE-50 OHMS
 FREQUENCY RANGE-DC TO 12.4 GHz

REVISIONS

ISSUE	CHANGES
12	CN 33974 D REDRAWN JCA 08/27/92
13	CN 35187 D JCA 11/29/93
14	CN 36497 A KH 08/03/95

JCA3063

SCALE 6:1	
APPROX SURFACE AREA	
873-18-3	
USED ON	
REF:	
JACK, SMA	
DRAWN JCA	DATE 08/27/92
DESIGN LJ	DATE 08/28/92
APPR.	DATE

KINGS
ELECTRONICS CO., INC.
TUCKAHOE, NEW YORK 10707

M39012/57-3502

GSD