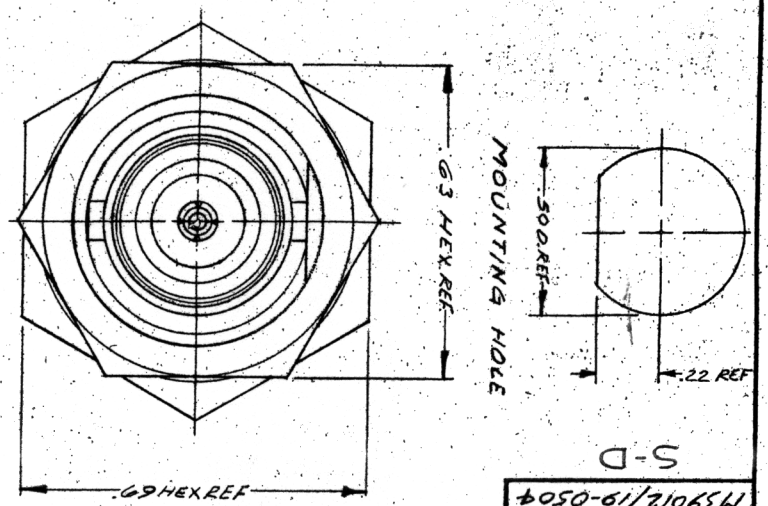


- NOTES:
1. FOR USE WITH RG-58, 58A, 58C, 141 & 141A/U CABLE.
  2. FOR CABLE TRIMMING USE KTU-13 & KTU-166.
  3. FOR FORMING USE CRIMP DIE SIZE 01.
  4. FOR CABLEING INSTRUCTIONS SEE CP-965.
  5. ITEM ② TO BE SUPPLIED UNASSEMBLED.

UNLESS OTHERWISE SPECIFIED:

1. TOLERANCES: FRACTIONS & 2 PLACE DECIMALS ± .010
2. REMOVE ALL BURRS, BREAK SHARP EDGES .005 MAX.
3. PLACE DECIMALS ± .004 ANGLES ± .30
4. SURF FINISHES: 93 MICRONS RMS MAX.
5. ALL DIMENSIONS PRIOR TO PLATING.



STAMP: 91836 M39012/19-0504  
K-C-19-250 XXXX

DATE CODE

ITEM	REQ'D	DESCRIPTION	PART NO.
9	1	CABLEING INSTRUCTIONS	3-339-2 M68
8	1	RETAINING RING	
7	1	BNC CRIMP CAPTIVE CONTACT	1-507-34 M90
6	1	HEX NUT	4-928-9-MCT
5	1	LOCK WASHER	4-928-12-MCT
4	1	INSULATOR	
3	1	GASKET	
2	1	K-GRIP BODY	
1	1	K-GRIP SLEEVE	1-4690-1MCT

139012/19-0504

ISSUE	CHANGED	REVISIONS
0	ER 13714	GA 14 JUL 79
1	CN 15915A	GA 15 JUL 79
2	CN 23168 E	JEP 30 MAR 82
3	CN 25533 D	CT 14 DEC 83
4	CN 27833 A	
5	SD 3 MAR 86	
6	CN 28237 C	BA 15 AG
	CN 32279 A	
	LJM 15 JUN 90	

USED ON: K-C-19-250

REF:

FINISH SPEC:

MATL SPEC:

DRAWN GAND DATE 12 AUG 74

APPR: 71 DATE 14 AUG 74

KINGS ELECTRONICS  
40 BARRETT AVE  
TUCKAHOE, N. Y. 10781

139012/19-0504