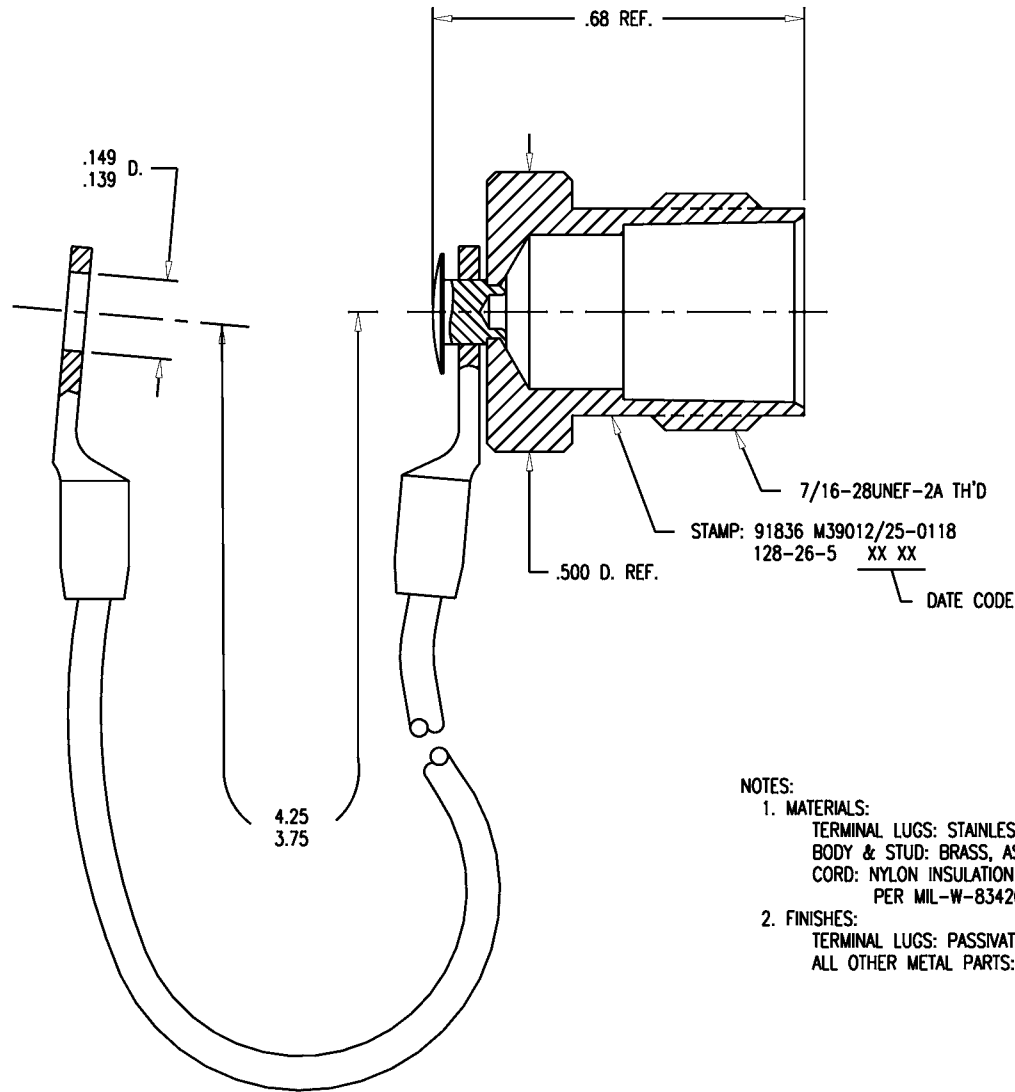


# GSD

M39012/25-0118



**NOTES:**

1. MATERIALS:  
 TERMINAL LUGS: STAINLESS STEEL, 303  
 BODY & STUD: BRASS, ASTM-B16  
 CORD: NYLON INSULATION (COLOR: NATURAL) OVER CRES WIRE  
 PER MIL-W-83420
2. FINISHES:  
 TERMINAL LUGS: PASSIVATE PER QQ-P-35  
 ALL OTHER METAL PARTS: SILVER PLATE, PER QQ-S-365

**REVISIONS**

ISSUE	CHANGES	
0	ER JCA	34952 09/21/93
		128-26-5
		DET1310

SCALE	4:1		
APPROX SURFACE AREA			
WAS:	E-18043		
USED ON			
REF:			
CAP & WIRE ROPE, TNC, F			
DRAWN	MJB	DATE	03/29/93
DESIGN	DW	DATE	03/30/93
APPR.		DATE	

**KINGS**  
ELECTRONICS CO., INC.  
TUCKAHOE, NEW YORK 10707

M39012/25-0118

# GSD