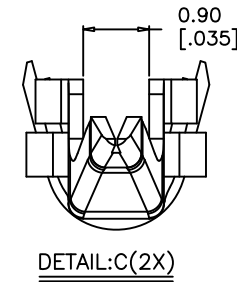
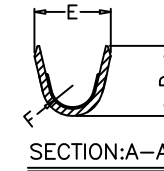
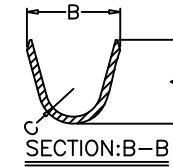
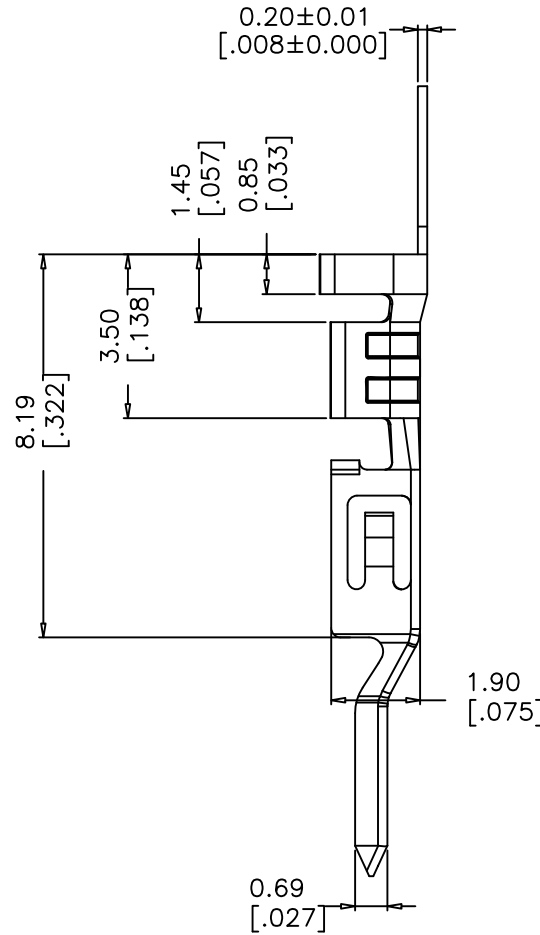
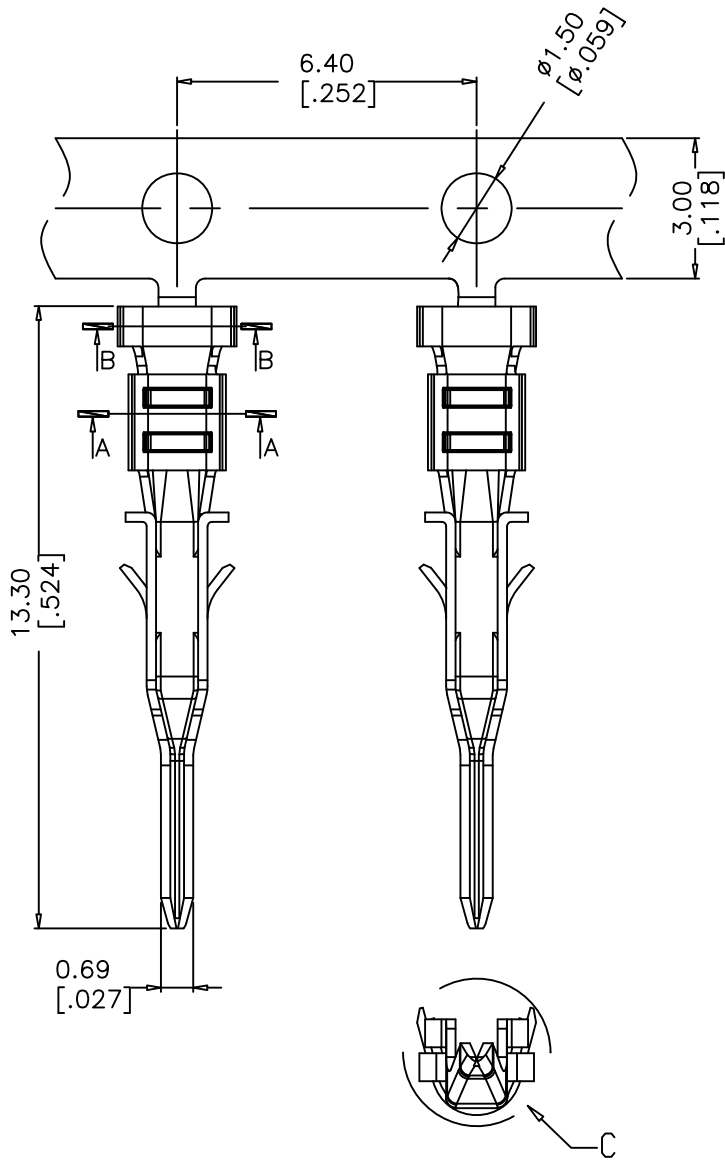


# CRIMP-CON CONTACT MALE, Series 300, Bronze, Tin, 20AWG - 30AWG



NOTES:  
 Current Rating: 5,0 AMP  
 Voltage Rating: 250V AC/DC  
 Contact Resistance: 10mΩ max.  
 Withstand Voltage: 1000V AC/Minute  
 Insulation Resistance: 1000MΩ min.  
 Operation Temperature: -25°C to +85°C

Contact Material: Copper Alloy

OPERATION	
X.X	±0.40
X.XX	±0.25
X.XXX	±0.15
Angle	± 3°
DIM	TOL

**CCM 300 B SN X**

Pitch	Material	Plating	Option
3,00mm	B = Phosphor Bronze	SN = Tin	A = AWG 20-24 B = AWG 26-30

Part. No.	Dimensions					
	A	B	C ±0,13	D	E	F ±0,13
CCM300BSNA	2,29	2,54	R0,76	1,91	2,08	R0,64
CCM300BSNB	1,91	2,10	R0,64	1,47	1,65	R0,51

REV	DATE	NOTE	NAME
2	30.08.2021	revised	PER
1	15.07.2020	issued	JAL