



Quality Products. Service Excellence.

Economy Fixed Depth Wall Rack *RB-WR Series*

Rugged 70 lbs|32 kg Weight Capacity

Features:



- Constructed in 16-gauge steel.
- 19" mounting EIA-310-D compliant rails with 10-32 tapped clip nuts.
- Hinged for easy rear access to devices.
- Rear cutout for cable entry through wall.
- Fixed-depth of 6".
- Finished in textured black powder paint.
- Includes four (4) 10-32 black rack screws with washers and clip nuts per rack unit.
- Tested to nearly double the suggested load rating of 70 lbs (32 kg).
- RoHS Compliant.
- Manufactured in North America.



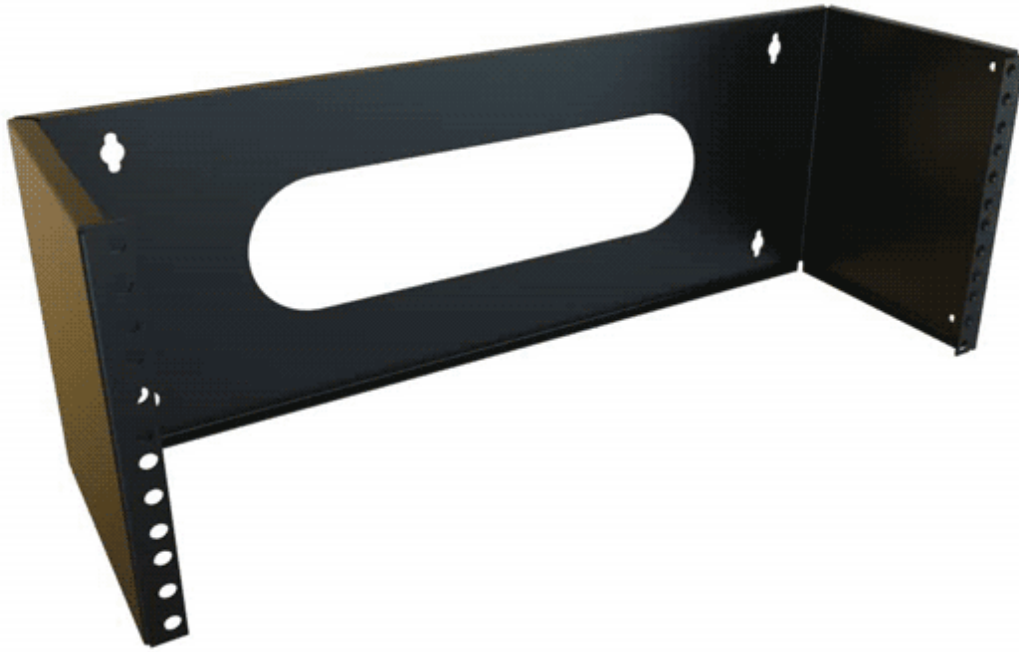
Part of the Rack Basics® line of economy rack solutions

Accessories

- Outlet Strips
- Cable Management
- 10-32 Mounting Screw and Clip Nut Combo-Pack

RACK BASICS®





Part No.	Overall Dimensions			Rack Units	Mounting Dimensions		
	Height	Width	Depth		Height	Width	Depth
RB-WR1	1.88	19.36	6.00	1U	1.75	19.00	5.75
RB-WR2	3.62	19.36	6.00	2U	3.50	19.00	5.75
RB-WR4	7.12	19.36	6.00	4U	7.00	19.00	5.75

Data subject to change without notice

© 2019. Hammond Manufacturing Ltd. All rights reserved.