



Quality Products. Service Excellence.

Swing-Out Sectional Wall Mount Rack Cabinet *HWC Series*

Heavy Duty UL Rated 350 lbs|159 kg Weight Capacity



The Hammond Wall Cabinet (HWC) was designed with the technical professional in mind. Our modern design enables the cabinet to be installed in less time using fewer installers than similar cabinets of its size. Fabricated from heavy duty steel, the HWC is available in up to 27U and 34.78" overall depth and can support up to 350 lbs of equipment.

If your installation is located in a locked room, doors may not be required. The HWC ships without doors but has three (3) convenient door options that take just a few minutes to install.

Features

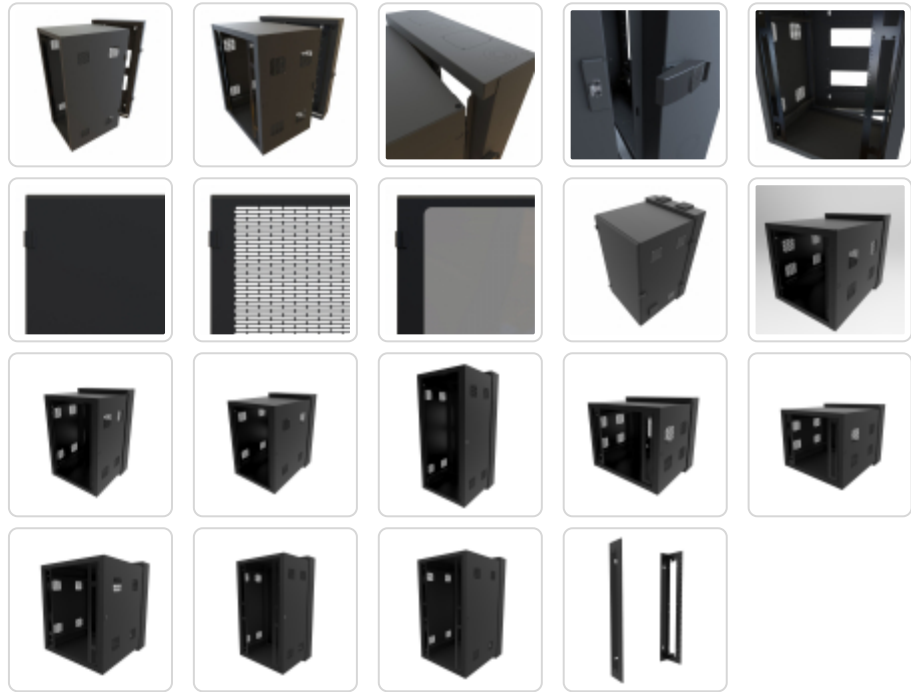
- Available in three (3) heights, two (2) widths and two (2) depths.
- Center section features:
 - Heavy duty spring-hinge pin for easy installation and removal.
 - Side panel that includes four (4) vents for optional **fans**.
 - Thirty (30) inch wide version includes cutouts for optional 19" accessories such as cable management located within the mounting rails.
- Rear section features:
 - The side of the rear section includes 2.50" and 2.00" knockouts.
 - The top and bottom of the rear section include
 - 3.00", 2.00", 1.38" and 1.12" Conduit knockouts
 - Fan knockouts
 - Generous cable management lances located on the rear section as well as on mounting rails.
 - Heavy duty keyhole for wall mounting.
 - Large openings in rear for cable access.
 - Dedicated bonding points that also provide drill-less mounting of electrical 4x2 utility box.
 - Grounding kit sold separately - **GRDKIT01** or **GRDKIT04**.
- Optional locking doors include:
 - 64% Perforated
 - Tinted Window
 - Solid
- Upgrade the cabinet to be IP50 dust-resistant with the **HWCF** Cabinet Sealing and Filter Kit.
- If you require UL and CSA Rated Type 12 or Type 4, consider the **EN4DH Series**.

Specifications

- 14-gauge welded rear section; 16-gauge center section and doors.
- EIA compliant adjustable depth mounting rails.
- Includes one (1) pair of tapped (10-32) mounting rails.
 - Supports multiple pairs of rails.
- Grounding lugs located on top and bottom of the door, center and rear sections.
- UL 2416 Rated for up to 350 lbs (159 kg) static load rating.

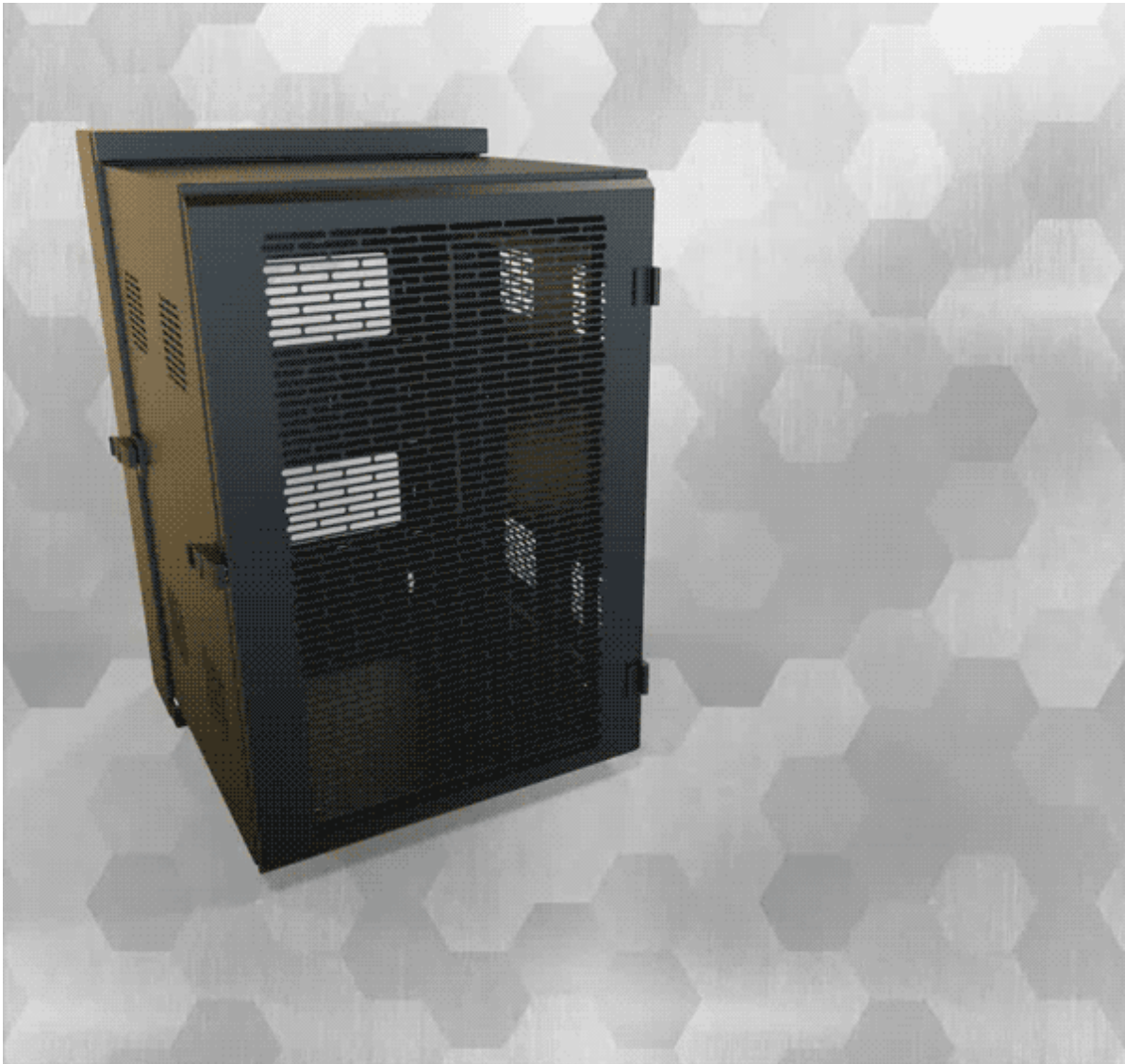
- Rugged sand-textured black powder paint (reduced fingerprints and marks).
- TAA Compliant.
- RoHS Compliant.
- Manufactured in North America.

Gallery



Accessories

- Wall Rack Cabinet Sealing and Filter Kit
- Universal Rack Shelf
- Rack Unit Label
- Grounding
- Cable Management
- Two Post Sliding Rack Shelf
- Outlet Strips
- Fan Kits



24" Wide (Door not included)

Part No. No Door	Overall Dimensions			Rack Units	Mounting (Usable) Dimensions		
	Height	Width	Depth		Height	Width	Depth
HWC2412U27BK	27.81	24.68	26.78	12U	21.00	19.00	24.50
HWC2412U35BK	27.81	24.68	34.78	12U	21.00	19.00	32.50
HWC2418U27BK	38.31	24.68	26.78	18U	31.50	19.00	24.50
HWC2418U35BK	38.31	24.68	34.78	18U	31.50	19.00	32.50
HWC2427U27BK	54.06	24.68	26.78	27U	47.25	19.00	24.50
HWC2427U35BK	54.06	24.68	34.78	27U	47.25	19.00	32.50

30" Wide (Door not included)

Part No. No Door	Overall Dimensions			Rack Units	Mounting (Usable) Dimensions		
	Height	Width	Depth		Height	Width	Depth
HWC3012U27BK	27.81	30.68	26.78	12U + 2U	21.00	19.00	24.50
HWC3012U35BK	27.81	30.68	34.78	12U + 2U	21.00	19.00	32.50
HWC3018U27BK	38.31	30.68	26.78	18U + 2U	31.50	19.00	24.50
HWC3018U35BK	38.31	30.68	34.78	18U + 2U	31.50	19.00	32.50
HWC3027U27BK	54.06	30.68	26.78	27U + 4U	47.25	19.00	24.50
HWC3027U35BK	54.06	30.68	34.78	27U + 4U	47.25	19.00	32.50

Optional Doors

Compatible with Cabinet		Solid Door	64% Vented Door	Tinted Window Door
Height	Width			
12U	24	HWCSD2412UBK	HWCVD2412UBK	HWCWD2412UBK
18U	24	HWCSD2418UBK	HWCVD2418UBK	HWCWD2418UBK
27U	24	HWCSD2427UBK	HWCVD2427UBK	HWCWD2427UBK
12U	30	HWCSD3012UBK	HWCVD3012UBK	HWCWD3012UBK
18U	30	HWCSD3018UBK	HWCVD3018UBK	HWCWD3018UBK
27U	30	HWCSD3027UBK	HWCVD3027UBK	HWCWD3027UBK

Additional Mounting Rails

Compatible with Cabinet		Tapped 10-32 Mounting Rails	Square Hole Mounting Rails
Height	Width		
12U	24	URR12U	-
18U	24	URR18U	-
27U	24	URR27U	-
12U	30	HWC3012UTR	HWC3012USR
18U	30	HWC3018UTR	HWC3018USR
27U	30	HWC3027UTR	HWC3027USR

Tags: Sectional Wall Mount Rack, Pivoting Rack, Data Wall Cabinet, Dual Hinge, Hinged Swing Gate

Data subject to change without notice

© 2019. Hammond Manufacturing Ltd. All rights reserved.