

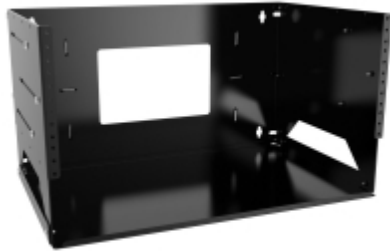


Quality Products. Service Excellence.

Adjustable Depth Wall Rack with Shelf *APBS Series*

Rugged 100 lbs|45 kg Weight Capacity

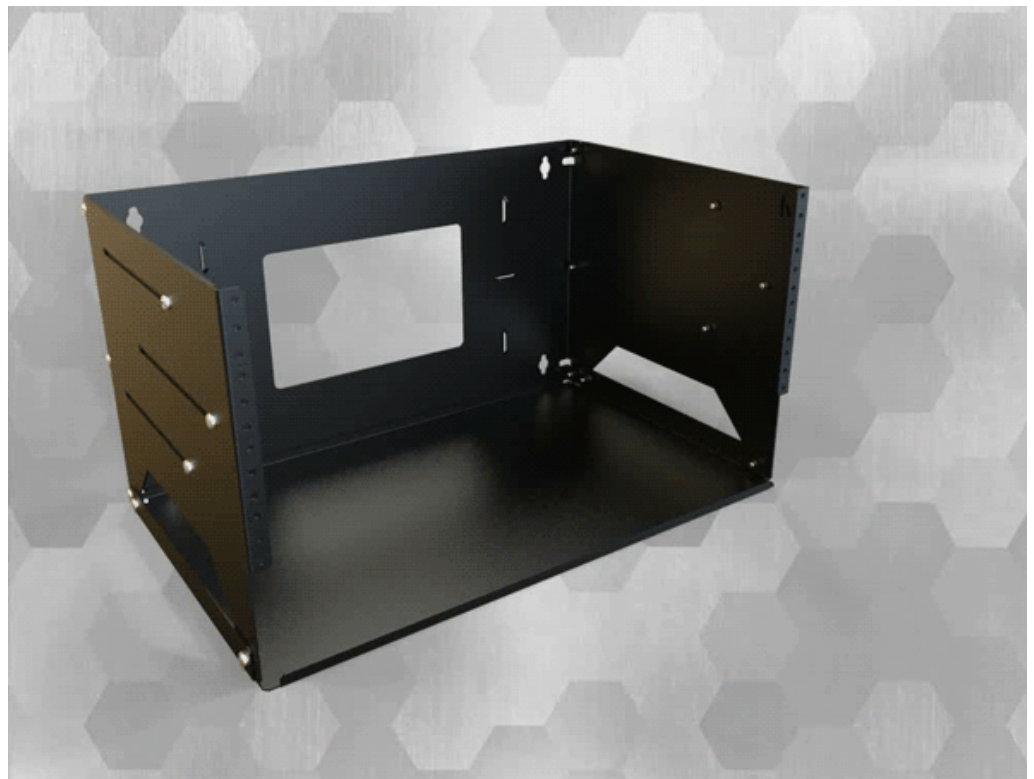
Features



- Constructed in 14-gauge steel.
- EIA-310-D compliant 10-32 tapped rails with 19" mounting.
 - Includes marked rack unit dividers to aid in equipment mounting.
- Adjustable depth from 12" to 18" using slots for easy set-up and adjusting.
- Rear cable access with multiple tie points for cable management.
- Includes twelve (12) inch depth accessory shelf.
- Finished in smooth black powder paint.
- Knockdown design ships unassembled for easy handling, reduced freight cost and shipping protection.
- Includes starter pack of mounting hardware. (25-pack of 10-32 screws)
- Tested to nearly double the suggested load rating of 100 lbs (45 kg).
- TAA Compliant.
- RoHS Compliant.
- Manufactured in North America.

Accessories

- Universal Rack Shelf
- Rack Panels
- 10-32 Mounting Hardware
- Outlet Strips
- Cable Management
- Hook and Loop Roll



Part No.	Overall Dimensions		Rack Units	Mounting Dimensions			
	Height	Width		Height	Width	Min Depth	Max Depth
APBS194UBK	10.54	19.25	4U	7.00	19.00	12.00	18.00
APBS198UBK	17.46	19.25	8U	14.00	19.00	12.00	18.00

Tags: **Hub-Shelf, Hub Shelf, knock-down, knock down**

Data subject to change without notice

© 2019. Hammond Manufacturing Ltd. All rights reserved.