

REFERENCE SPECIFICATIONS

-NFC 93425 (in compliance with HE 501)

PHYSICAL CHARACTERISTICS

-INSULATOR MATERIAL: THERMOPLASTIC UL94V0

-CONTACT MATERIAL: BRASS  
GOLD OVER NICKEL

-ACCESSORIES: BRASS,cadmium plated yellow passivation

-SHELLS: STEEL,cadmium plated yellow passivation

ELECTRICAL CHARACTERISTICS

-NOMINAL CURRENT: 7.5A

-CONTACT RESISTANCE: <= 7.3 m ohms

-CONTACT/CONTACT : >=1000 V

-CONTACT/GROUND : >=1200 V

-INSULATION RESISTANCE: >=5000 MOhms

ENVIRONMENTAL CHARACTERISTICS

- CLIMATIC CATEGORY: 55/125/56

TEMPERATURE RANGE -55°C TO +125°C

DAMP HEAT STEADY STATE 56 DAYS

SALT SPRAY 48 HOURS

MECHANICAL CHARACTERISTICS

- RETENTION AGAINST TORQUE: - Threaded insert: 0.7 N.m minimum

- Female screw : 0.5 N.m minimum

# DBML25P043

Series

Shell size: **E A B C D**  
see sheet 2

Front accessory definition  
see sheet 2

- Blank** :without accessory
- F** :floating mounting
- L** :threaded insert M3
- O** :threaded insert UNC 4-40
- V** :female screw UNC 4-40

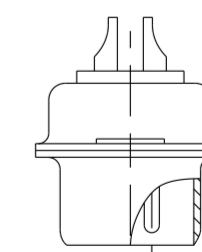
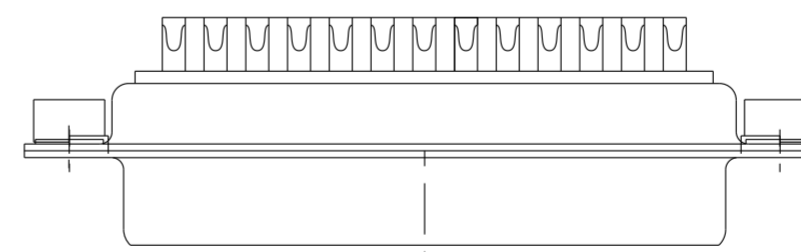
Contact number (see sheet 2)  
**9,15,25,37,50**

Contacts

- P** :Pin

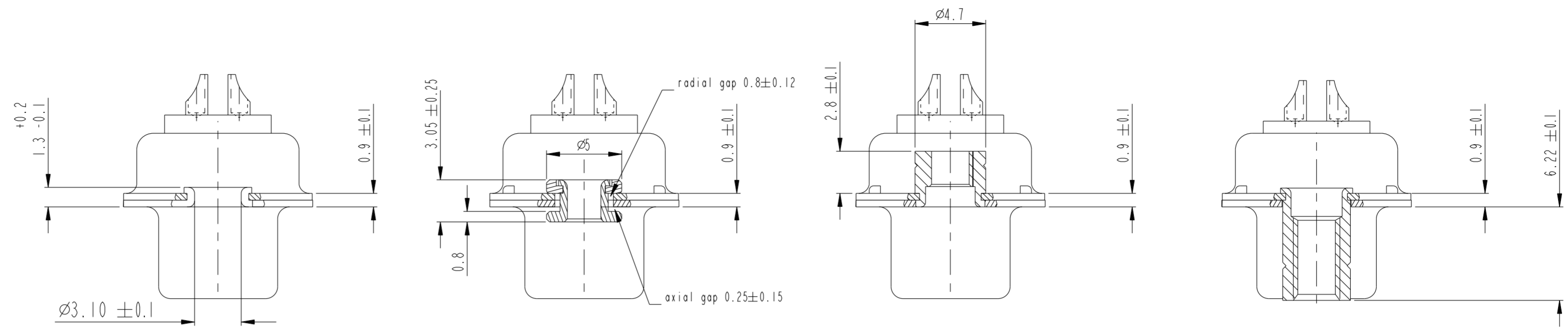
Plating

- Blank** :solder bucket 500 matings/unmatings
- 043** :solder bucket 500 matings/unmatings  
for harsh environment



25 WAY for Example

spec ref	dr	1, Product Eng	2015/06/15	projection	mm	size	A2	scale	1:1
tolerance std	eng	Gregar Mathew	2021/12/07			ecn no	ELX-42954-1	rel level	Released
ISO 406 ISO 1101	chr	-	appr						
surface	linear	0.X	±0.3			<b>D-SUB MALE DM HE501series</b>		cat. no.	C01-8637-1737
ISO 1302	angular	0°	±1°	with solder buckets		rev	D	Product - Customer Drw	



FRONT ACCESSORY	Blank without	F floating mounting	L insert M3 O insert UNC 4.40	V female screw UNC 4.40
-----------------	---------------	---------------------	----------------------------------	-------------------------

PART NUMBER	FRONT ACCESSORY
D*MxxP	without
D*MFxxP	floating mounting
D*MLxxP	insert M3
D*MOxxP	insert UNC 4.40
D*MVxxP	female screw UNC 4.40

shell size	Contact number
*	XX
E	09
A	15
B	25
C	37
D	50

PART NUMBER	FRONT ACCESSORY
D*MxxP043	without
D*MFxxP043	floating mounting
D*MLxxP043	insert M3
D*MOxxP043	insert UNC 4.40
D*MVxxP043	female screw UNC 4.40

CROSS REFERENCES HE501 and FCI

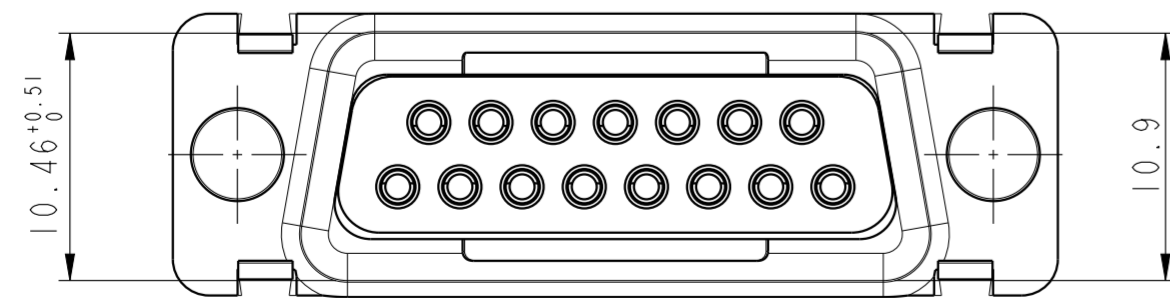
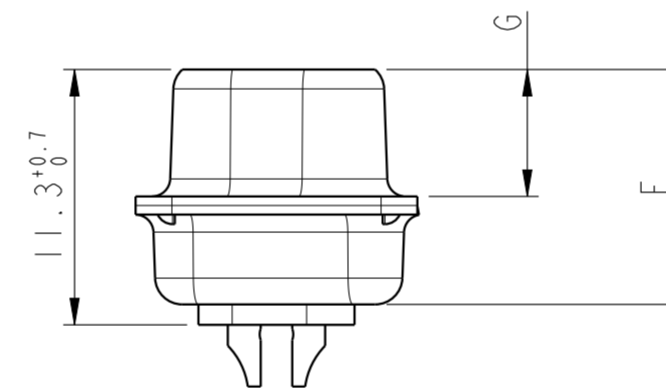
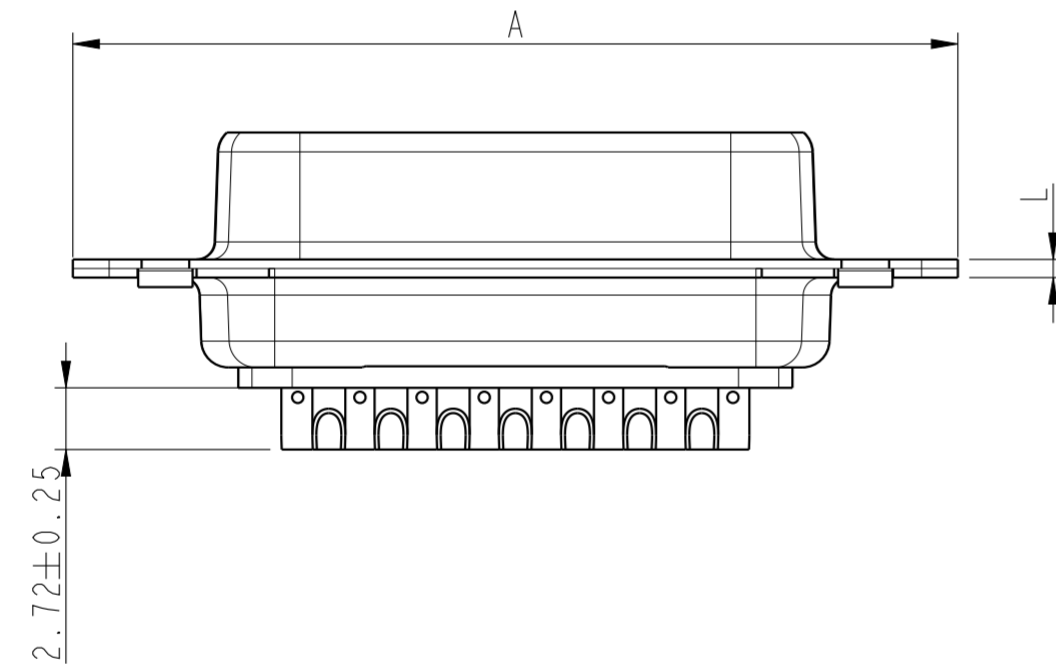
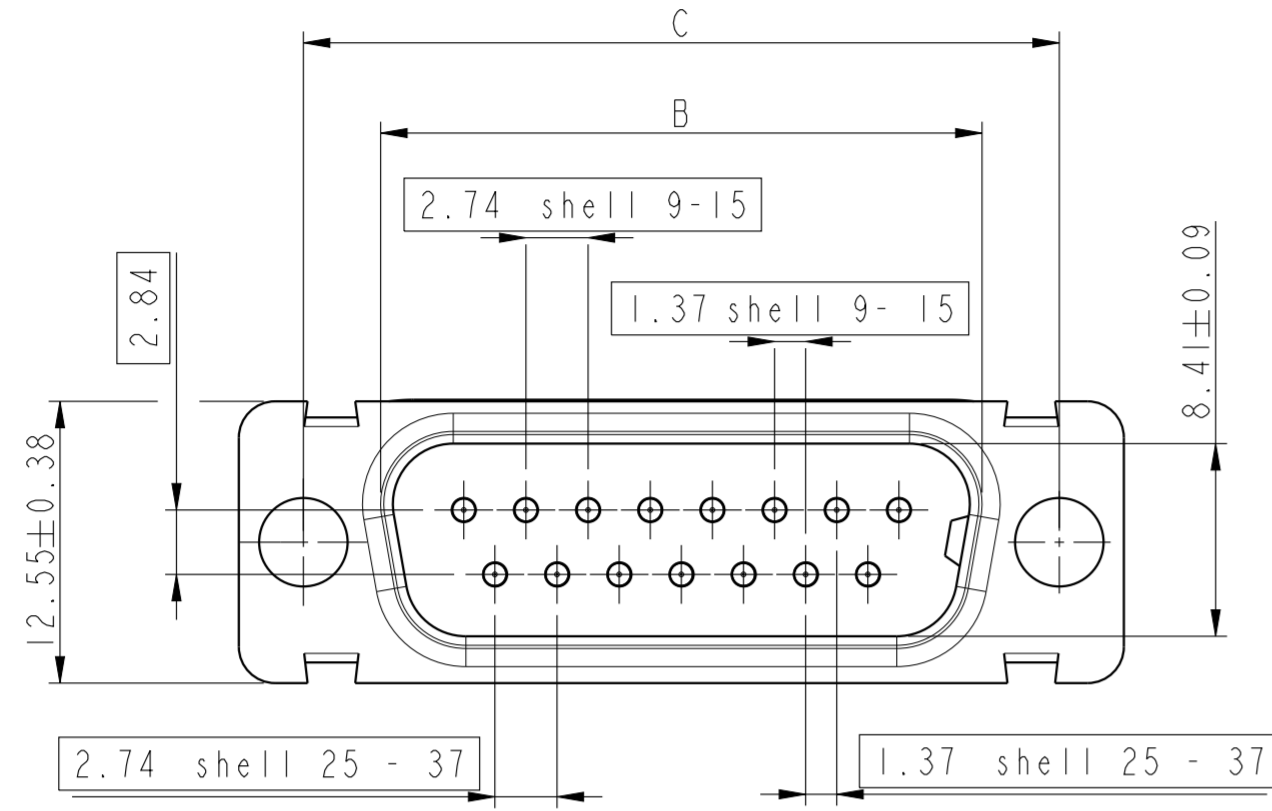
HE501 P/N	FCI P/N	FRONT ACCESSORY
HE501NxxAP	D*MxxP	without
HE501FxxAP	D*MFxxP	floating mounting

spec ref	dr	1, Product Eng	2015/06/15	projection	mm	size	A2	scale	1:1
tolerance std	eng	Gregar Mathew	2021/12/07			ecn no	ELX-42954-1	rel level	Released
ISO 406	chr	-							
ISO 1101	appr	Kuriakosa, San	2021/12/07						
surface	linear	0.X	$\pm 0.3$			<b>D-SUB MALE DM HE501series</b>		dwg no	C01-8637-1737
ISO 1302		0.XX	$\pm 0.1$	with solder buckets		Product - Customer Drw		rev	D
	angular	0°	$\pm 1^\circ$	amphenol-icc.com		cat. no.		sheet 2 of 4	

# DIMENSIONS FOR SHELL E, A, B, C

Dimensions are in millimeters

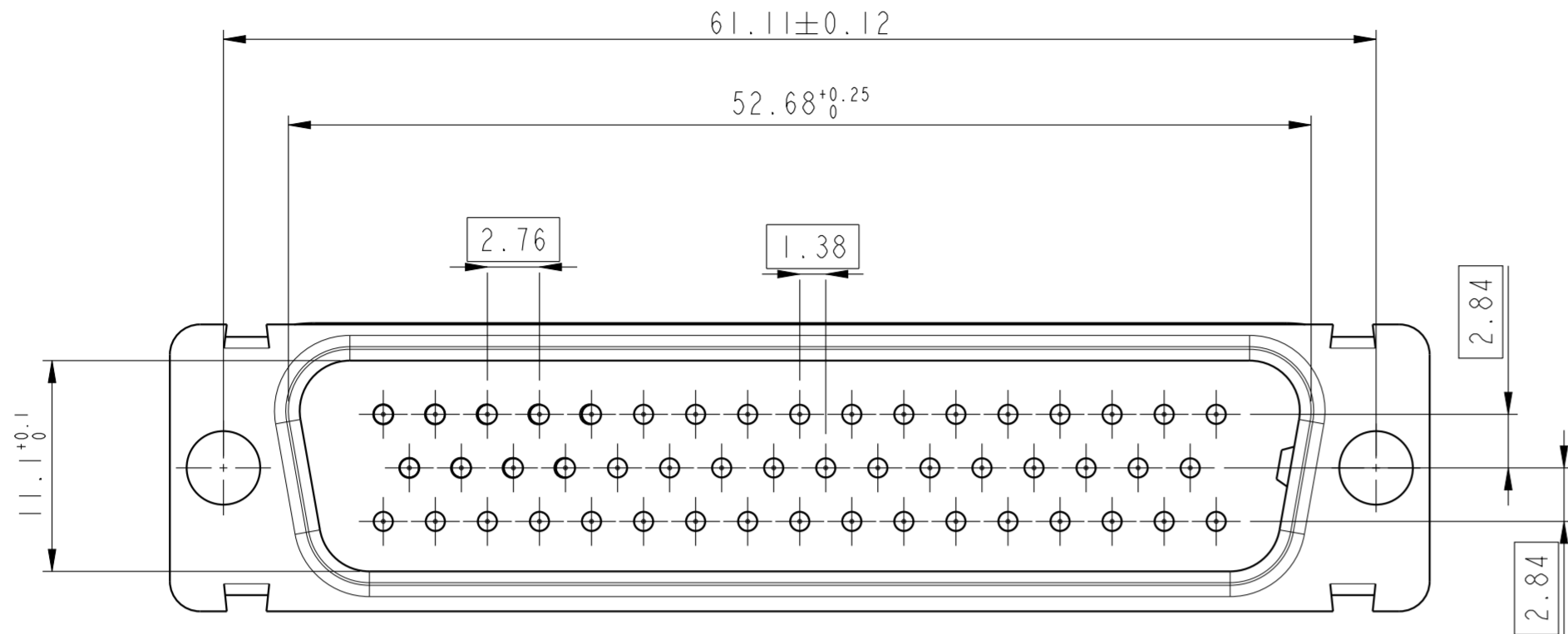
Shell size	Number of contacts	A $\begin{matrix} +0.76 \\ -0 \end{matrix}$	B $\begin{matrix} +0.25 \\ -0 \end{matrix}$	C $\pm 0.12$	F $\begin{matrix} +0.57 \\ -0 \end{matrix}$	G $\begin{matrix} +0.25 \\ -0 \end{matrix}$	H $\begin{matrix} +0.51 \\ -0 \end{matrix}$	L $\begin{matrix} +0.22 \\ -0 \end{matrix}$
E	09	30.43	16.91	24.99	10.47	5.9 $\begin{matrix} +0.15 \\ -0 \end{matrix}$	19.02	0.80
A	15	38.76	25.24	33.32	10.47	5.9 $\begin{matrix} +0.15 \\ -0 \end{matrix}$	27.25	0.80
B	25	52.65	38.96	47.04	10.40	5.7 $\begin{matrix} +0.25 \\ -0 \end{matrix}$	41.02	0.80
C	37	68.96	55.42	63.50	10.56	5.7 $\begin{matrix} +0.25 \\ -0 \end{matrix}$	57.45	0.90



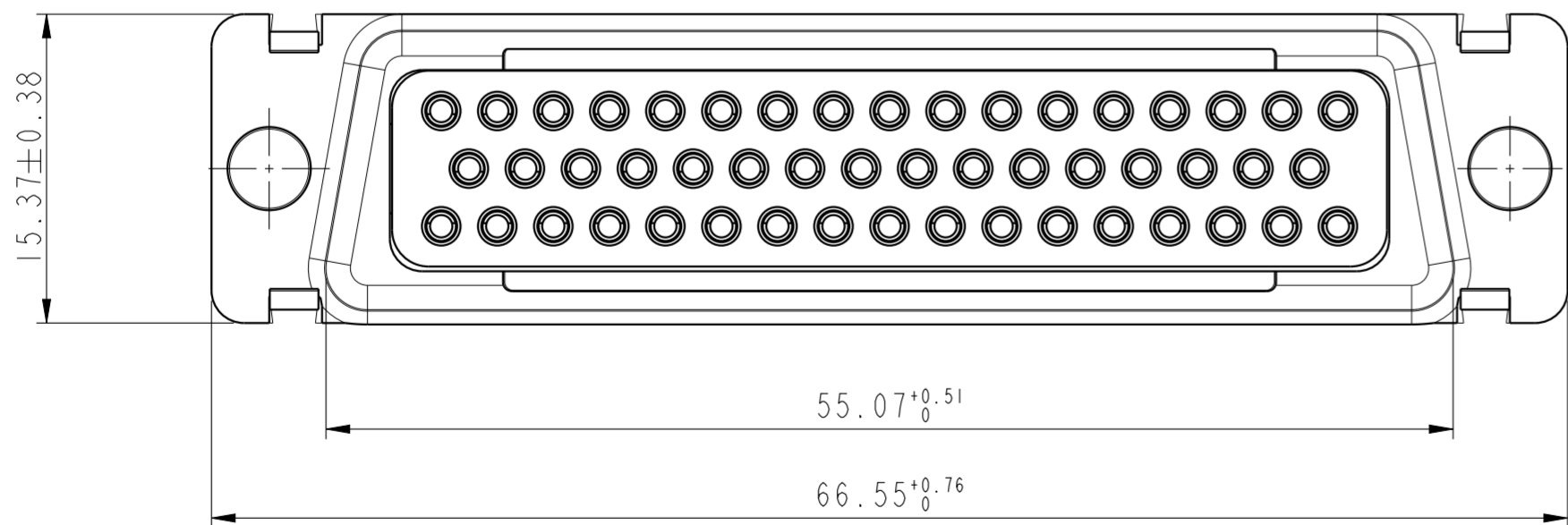
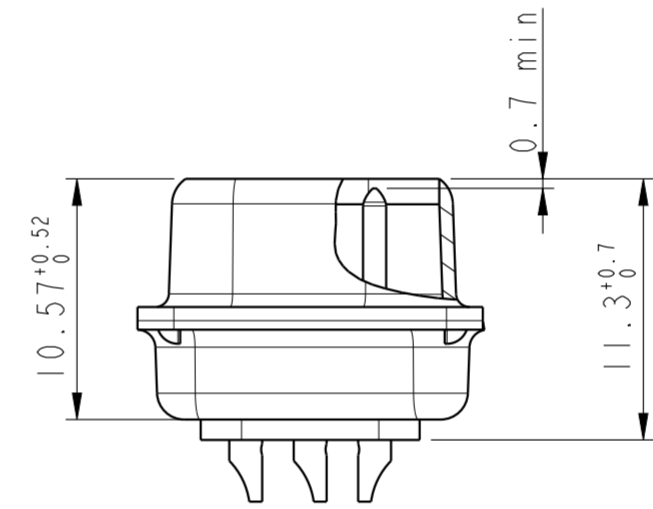
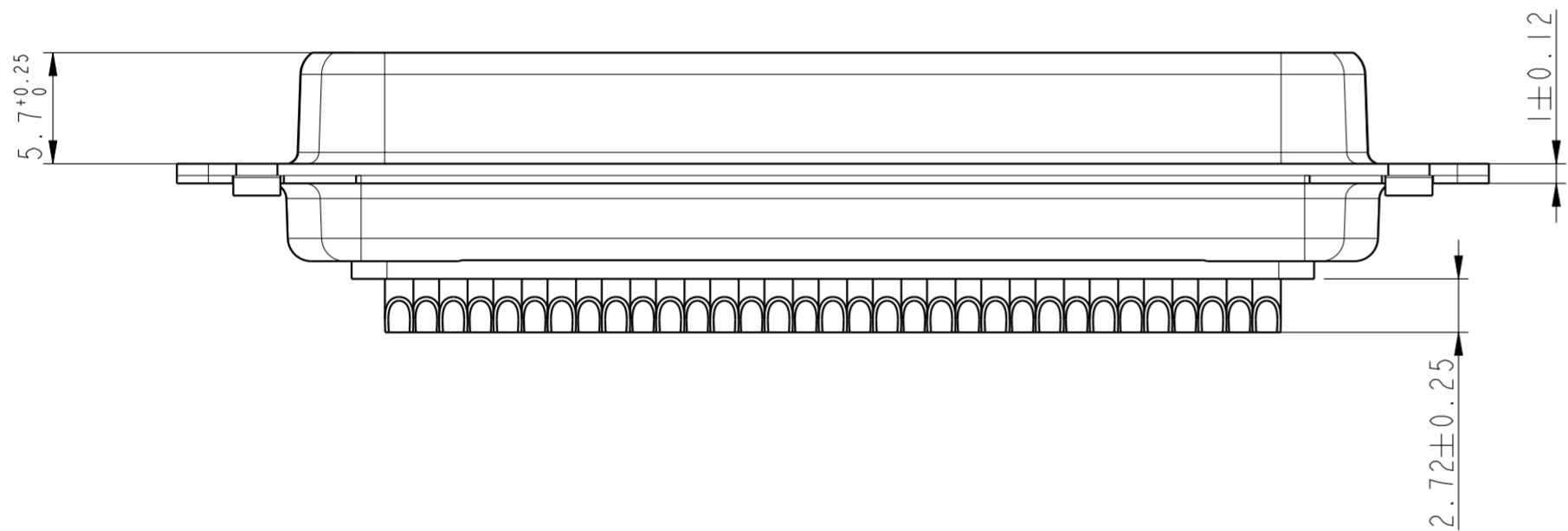
SCALE 3:1

spec ref	dr	1, Product Eng	2015/06/15	projection	mm	size	A2	scale	1:1
tolerance std	eng	Gregar Mathew	2021/12/07			ecn no	ELX-42954-1	rel level	Released
ISO 406 ISO 1101	chr	-	2021/12/07						
TOLERANCES UNLESS OTHERWISE SPECIFIED	appr	Kuriakosa, San	2021/12/07	<b>Amphenol FCI</b>		D-SUB MALE DM HE501series with solder buckets		C01-8637-1737	rev <b>D</b>
surface	linear	0.X	±0.3	amphenol-icc.com	cat. no.	-	Product - Customer Drw	sheet 3 of 4	
ISO 1302	angular	0°	±1°	PDS: Rev :D		STATUS:Released		Printed: May 25, 2022	

DIMENSIONS FOR SHELL SIZE D (50 CONTACTS)



SCALE 3:1



Amphenol FCI

© 2020 Amphenol Corporation

spec ref	dr	1, Product Eng	2015/06/15	projection	mm	size	A2	scale	1:1
tolerance std	eng	Gregar Mathew	2021/12/07			ecn no	ELX-42954-1		
ISO 406	chr	-	rel level				Released		
ISO 1101	appr	Kuriakose, San	2021/12/07	product family	-	rel level	Released		
surface	linear	0.X	±0.3			title	D-SUB MALE DM HE501series		
ISO 1302		0.XX	±0.1			dwg no	C01-8637-1737		
		0.XXX	±0.05			rev	D		
angular	0°	±1°	amphenol-icc.com	cat. no.	-	Product - Customer Drw	sheet 4 of 4		