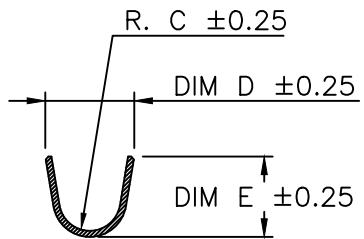


PRODUCT NUMBER

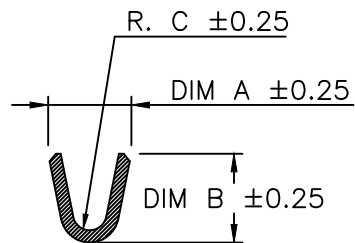
SEE SHEET 2

EXTENDED RANGE

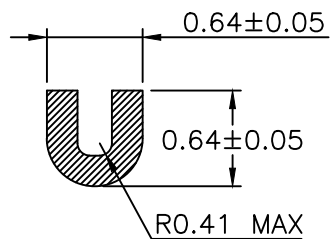
- TOOLING FEASIBILITY CONFIRMED
- SAMPLES ON DEMAND
- AVAILABILITY ON DEMAND



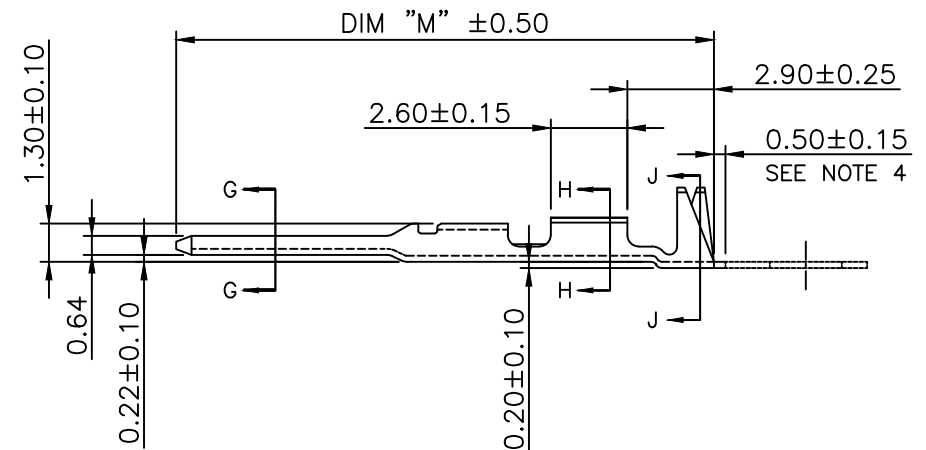
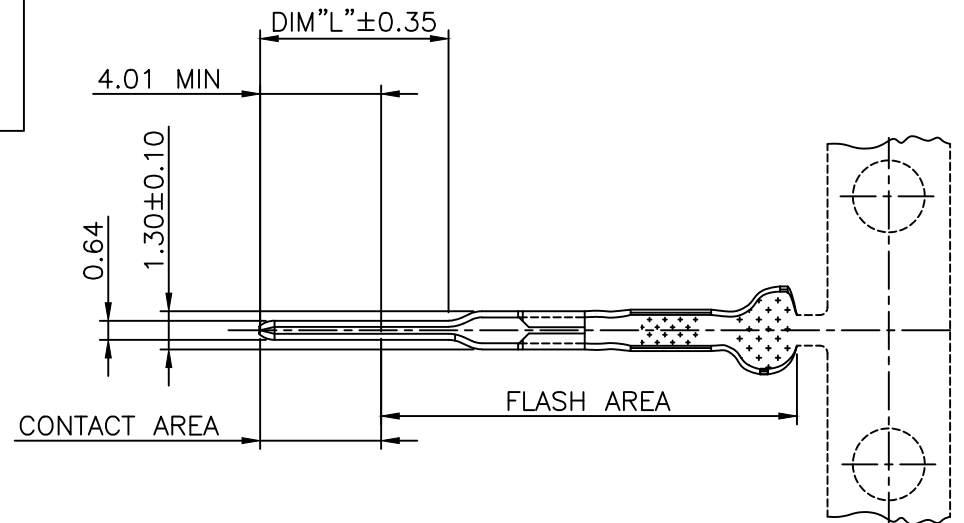
SECTION J-J
SCALE 8:1



SECTION H-H
SCALE 8:1



SECTION G-G
SCALE 5:1



mat'l. code		surface		tolerance		projection		product family	
SEE NOTES		ISO 1302 ✓		ISO 406 ISO 1101		mm		PV TERMINAL	
ltr	ecn no	dr	date	tolerances unless otherwise specified		mm		title	
T	V09-0453	HTB	2009.10.15	angles	linear	.x ±0.3	CTW MALE PIN		
U	F-25828	DDE	2017.01.03			.xx ±0.13	scale 3:1		
V	F-53220	DDE	2024.10.16	σ±z'		.xxx ±0.05	dwg no		
W	F-54571	DDE	2025.02.10	dr	S.ROYER	94.12.19	sheet 1 of 2		size
				enr	T.HANNA	94.12.19	75967		A3
R	V06-0624	HTB	2006.06.30	chr	T.HANNA	94.12.19	CUSTOMER		Drawing
S	V08-0114	HTB	2008.04.01	appd	T.HANNA	94.12.19			
sheet	revision	W	W						
index	sheet	1	2						

PRODUCT NUMBER
75967-XYZLF

LEAD-FREE RoHS COMPATIBLE,
SEE NOTE 6

VARIATION
(AS AVAILABLE)

PLATING, SEE PLATING TABLE
(AS AVAILABLE)

PACKAGING, SEE PACKAGING TABLE
(AS AVAILABLE)

PRODUCT NUMBER	AWG	WIRE BARREL			INSULATION BARREL			DIM "L"	DIM "M"
		DIM "A"	DIM "B"	DIM "C"	DIM "D"	DIM "E"	DIM "F"		
75967-XY1LF	28-32	1.37	1.47	0.28	2.92	2.67	1.02	6.42	17.70
75967-XY2LF	22-26	1.78	1.65	0.43	3.53	3.05	1.27	6.42	17.70
75967-XY3LF	18-20	2.64	2.64	0.53	3.53	3.05	1.27	6.42	17.70

PLATING CODE	PLATING
75967-X1ZLF	0.76µm Au IN CONTACT AREA; REMAINDER 0.076µm Au FLASH OVER 1.27µm Ni
75967-X2ZLF	0.38µm Au IN CONTACT AREA; REMAINDER 0.076µm Au FLASH OVER 1.27µm Ni
75967-X3ZLF	1.27µm Au IN CONTACT AREA; REMAINDER 0.076µm Au FLASH OVER 1.27µm Ni
75967-X6ZLF	PRE-PLATED 2.54µm TO 4.06µm Sn (SEE NOTE 8)
75967-X9ZLF	1.27µm Au IN CONTACT AREA; REMAINDER 0.76µm Au OVER 1.27µm Ni

PACKAGING CODE	FINAL REELING	QUANTITY	APPLICATION INFORMATION
75967-1YZLF	RIGHT TO LEFT	8000 PER REEL	APPLICATOR R. TO L. FEEDING
75967-3YZLF	LEFT TO RIGHT	8000 PER REEL	APPLICATOR L. TO R. FEEDING

NOTES:

- 1 - APPLICABLE SPECIFICATIONS
BUS-12-098 PRODUCT SPECIFICATION
- 2 - FOR PLATING SPECIFICATIONS SEE SHEET 2
- 3 - FOR APPLICATION WITH MINI-LATCH HOUSING SEE TA-211
- ④ - CUT-OFF DIMENSION FOR LOOSE PIECE VERSIONS
- ⑤ - MATERIAL: BRASS ASTM B36 ALLOY C26000-H03
- ⑥ - PRODUCT MEETS EUROPEAN UNION DIRECTIVES AND OTHER COUNTRY REGULATIONS AS DESCRIBED IN GS-22-008.
- 7 - THIS PRODUCT IS NOT INTENDED TO BE EXPOSED TO MANUFACTURING SOLDER PROCESSES.
- ⑧ - THIS PRODUCT HAS 100% TIN PLATING IN THE INTERFACE AND HAS NOT BEEN TESTED FOR WHISKER GROWTH IN ALL INTERCONNECT ENVIRONMENTS.
- 9 - THIS PART SERIES IS NOT INITIALLY INTENDED FOR AUTOMOTIVE APPLICATIONS. ADDITIONAL FEES ARE CHARGEABLE FOR ANY ADDITIONAL QUALIFICATION AND TEST REPORTS PERFORMED OUTSIDE THE SCOPE OF THE STANDARD PRODUCT SPECIFICATIONS.
- 10 - UNLESS OTHERWISE APPROVED BY AMPHENOL, ALL PARTS AND COMPONENTS ARE DESIGNED & BUILT ACCORDING TO AMPHENOL'S SPECIFICATIONS WHICH ARE SUBJECT TO CHANGE WITHOUT NOTICE.

mat'l. code SEE NOTES				surface ISO 1302 <input checked="" type="checkbox"/>	tolerance ISO 406 ISO 1101	projection 	product family PV TERMINAL
ltr	ecn no	dr	date	tolerances unless otherwise specified		mm 	title CTW MALE PIN
T	V09-0453	HTB	2009.10.15	angles	.x ±0.3		
U	F-25828	DDE	2017.01.03	linear	.xx ±0.13		
V	F-53220	DDE	2024.10.16	σ±z'	.xxx ±0.05		
W	F-54571	DDE	2025.02.10	dr	S.ROYER 94.12.19	scale 3:1	dwg no 75967 sheet 2 of 2 size A3
				enr	T.HANNA 94.12.19	Amphenol FCI	
				chr	T.HANNA 94.12.19		
				appd	T.HANNA 94.12.19		
sheet index	revision sheet						type CUSTOMER Drawing