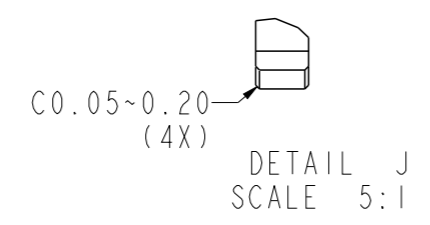
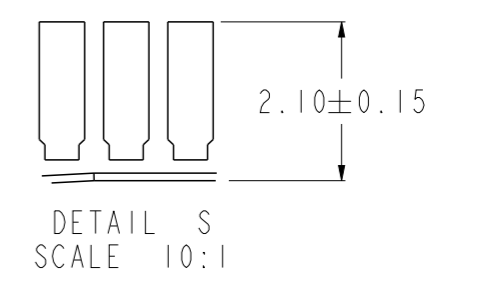
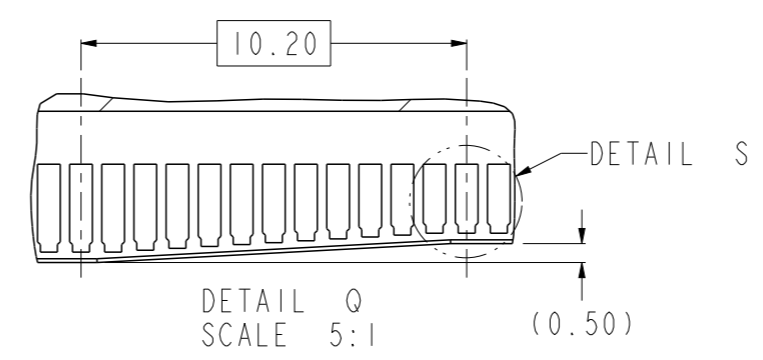
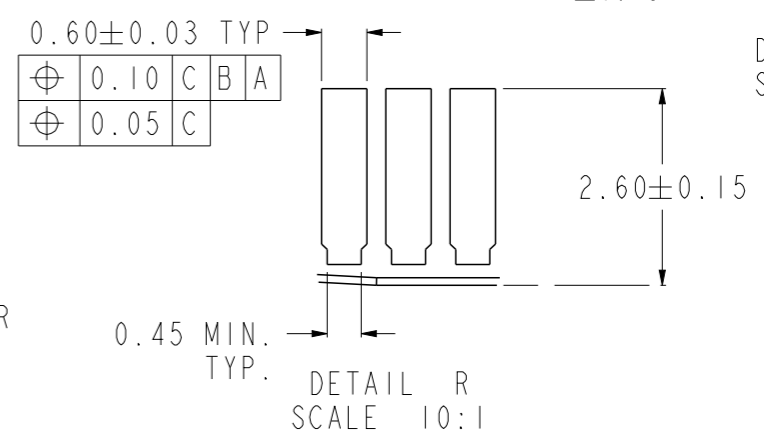
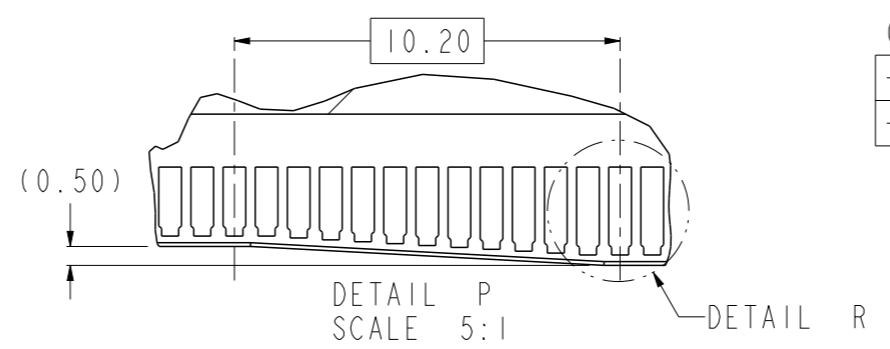
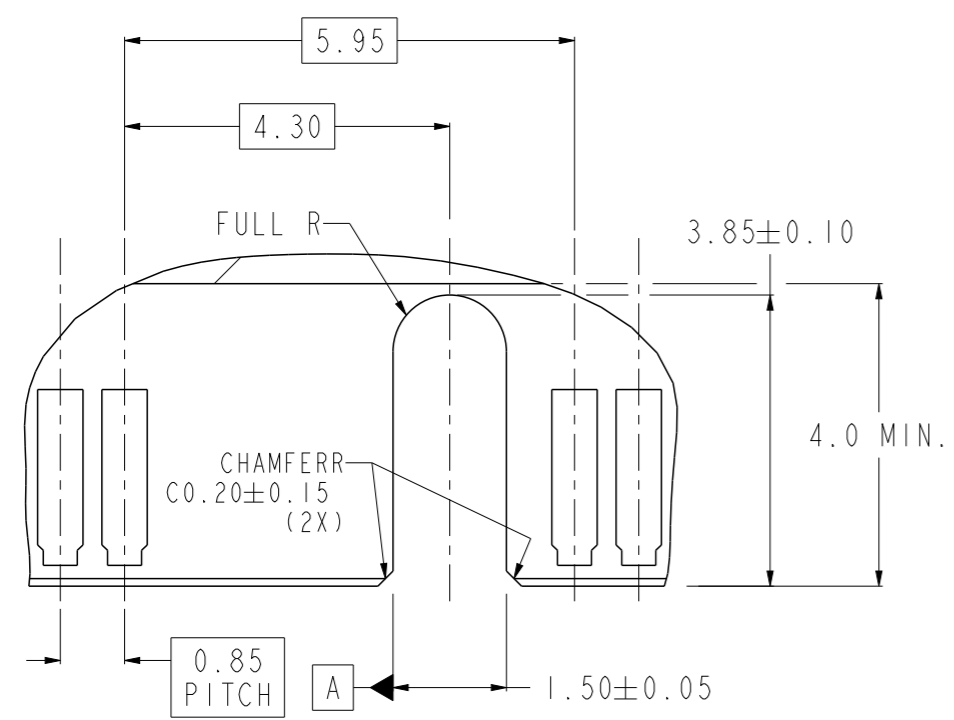
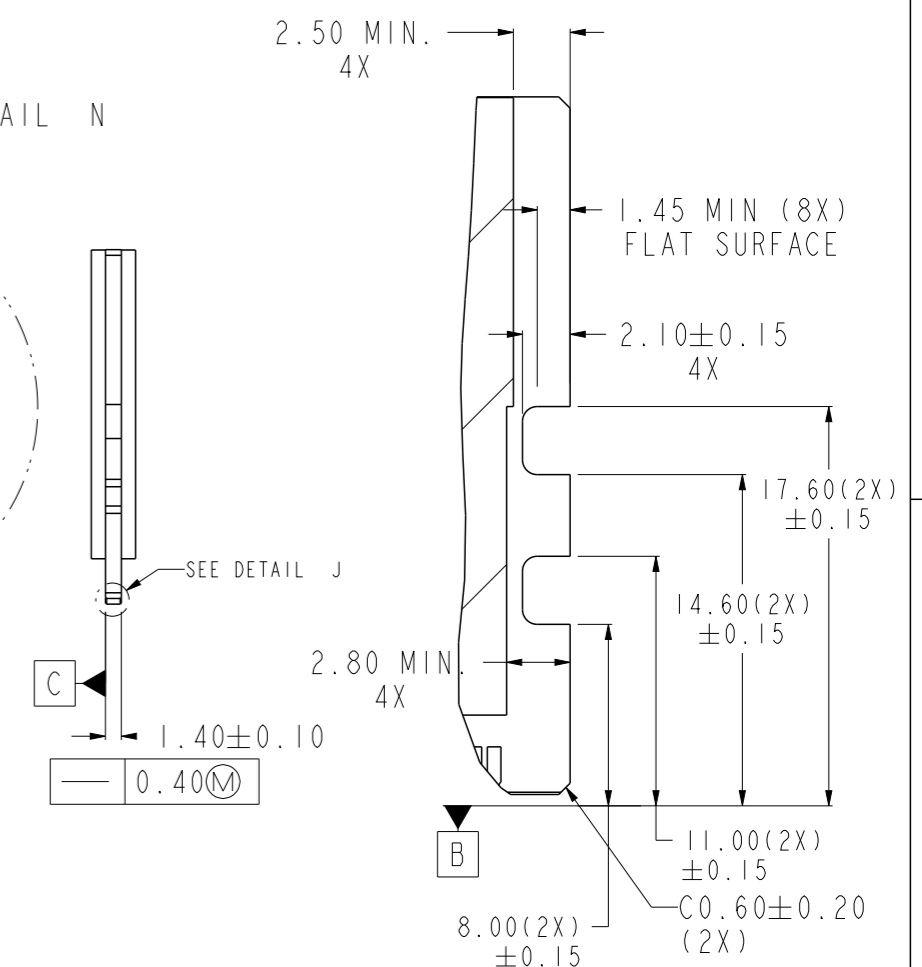
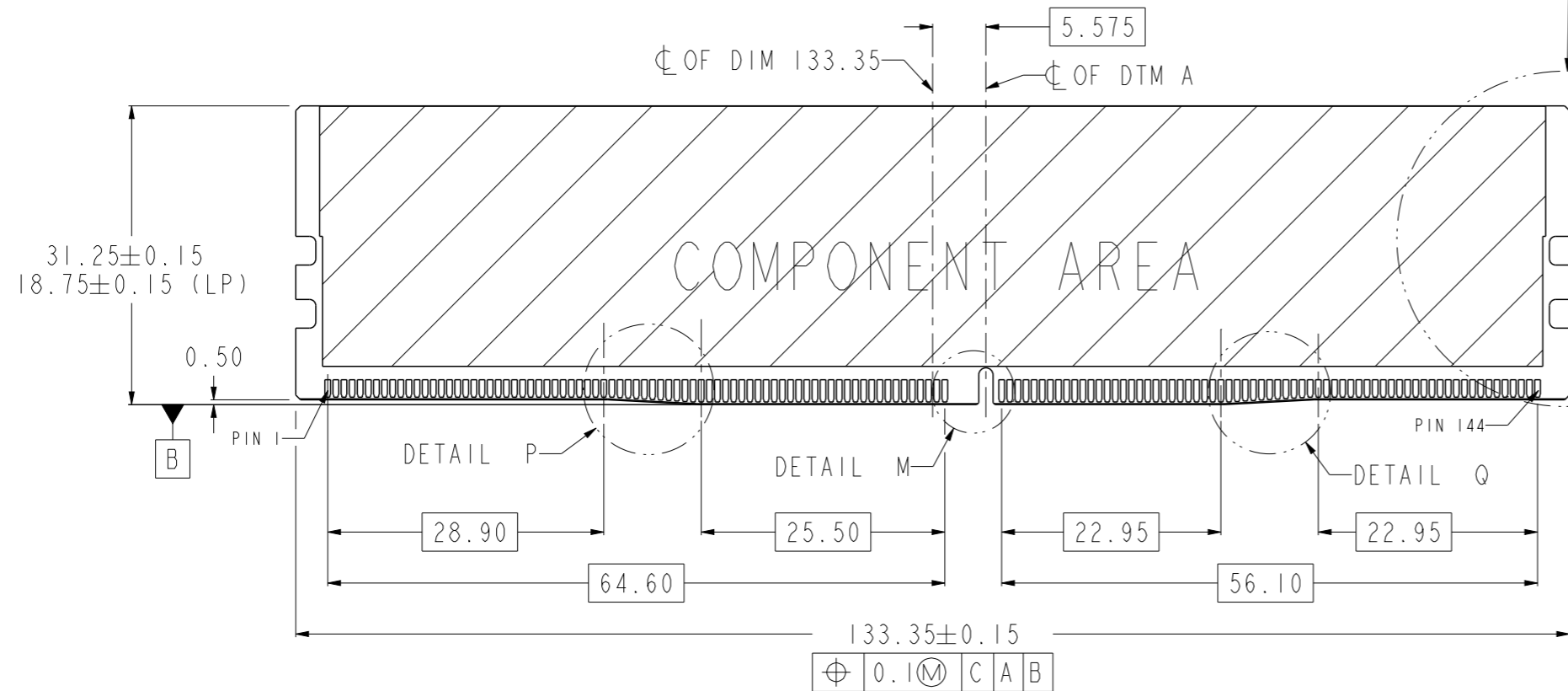


spec ref	-	dr	Girder Liang	2019/11/28	projection	mm	size	A3	scale	2:1	
tolerance std	ISO 406 ISO 1101	eng	Viking Huang	2023/11/21			ecn no	ELX-DG-49858-1			
TOLERANCES UNLESS OTHERWISE SPECIFIED		chr	-	-			rel level	Released			
surface	ISO 1302	appr	Nickor Zuo	2023/11/28	product family	-	dwg no	10151094		rev	D
	linear				Amphenol FCI		DDR4 288 PIN DIMM CONNECTOR				
	angular				SMT TERMINATION			Product - Customer Drw		sheet 1 of 4	

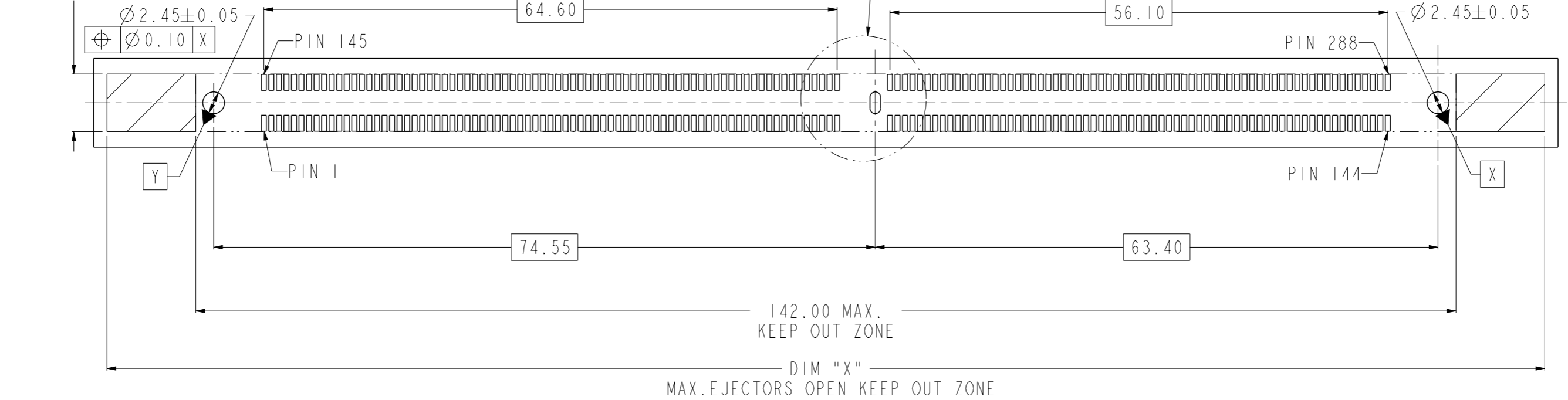
DDR4 MODULE
MORE INFORMATION REFER TO JEDEC MO-309



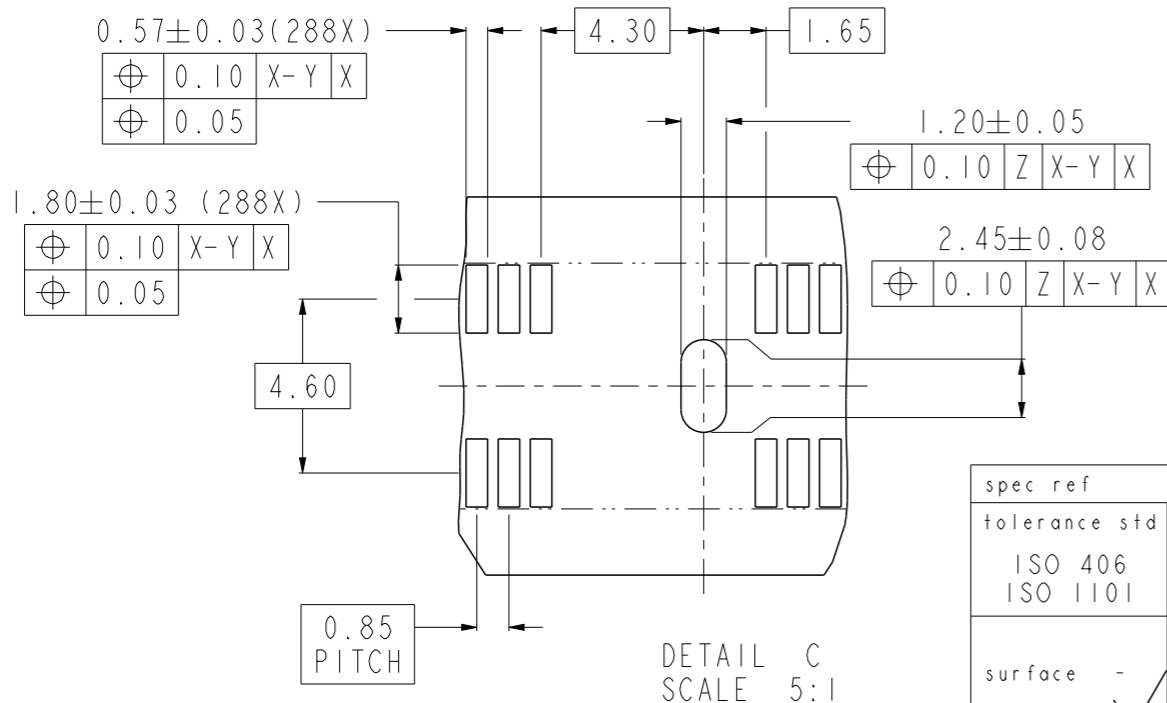
spec ref	-	dr	Girder Liang	2019/11/28	projection		mm	size	A3	scale	3:2
tolerance std	ISO 406 ISO 1101	eng	Viking Huang	2023/11/21	product family	-	ecn no	ELX-DG-49858-1	rel level	Released	
surface	-	chr	-	-	cat. no.	-	Product - Customer Drw	sheet 2 of 4			
		appr	Nickor Zuo	2023/11/28							
		dwg no	10151094		rev	D					
		ISO 1302	linear	0.X ± 0.30 0.XX ± 0.20 0.XXX ± 0.10	angular	0° ± 2°	Amphenol FCI		DDR4 288 PIN DIMM CONNECTOR SMT TERMINATION		

RECOMMENDED PCB LAYOUT
MORE INFORMATION REFER TO JEDEC SO-017

6.50 MAX.
KEEP OUT ZONE



THICKNESS
1.6~3.2mm



ADDITIONAL NOTES:

1. RECOMMENDED STENCIL THICKNESS IS NOT LESS THAN 0.15mm

spec ref	-	dr	Girder Liang	2019/11/28	projection	mm	size	A3	scale	2:1
tolerance std	ISO 406 ISO 1101	eng	Viking Huang	2023/11/21			ecn no	ELX-DG-49858-1		
surface	linear	chr	-	apppr			Nickor Zuo	2023/11/28	product family	-
	angular	0°	±2°	Amphenol FCI		DDR4 288 PIN DIMM CONNECTOR SMT TERMINATION	dwg no 10151094	rev D	Product - Customer Drw	
ISO 1302				cat. no.	-	Product - Customer Drw	sheet 3 of 4			

PRODUCT PART NUMBER

10151094-□□□□□□□□

ADDITIONAL REQUIREMENTS

1: LOW HALOGEN COMPLIANT

HOLD DOWNS CONFIGURATIONS

1: 3 FORKLOCKS, LENGTH "L"=2.50±0.25
 3: 3 SOLDER TABS, LENGTH"L"=2.00±0.25
 6: 3 SOLDER TABS, LENGTH"L"=1.50±0.25

MYLAR, CAP AND PACKAGE

0. WITH MYLAR, HARD TRAY PACKAGE
 1. WITHOUT MYLAR AND CAP, HARD TRAY PACKAGE
 2. WITH CAP, HARD TRAY PACKAGE
 3. WITH 90MM LENGTH MYLAR, HARD TRAY PACKAGE
 5. WITH 123±2.00mm LENGTH MYLAR, HARD TRAY PACKAGE

HOUSING COLOR

0: NATURAL
 1: BLACK
 2: BLUE

EJECTOR TYPE

CODE	COLOR	DIM "X" MAX. EJECTORS OPEN	LATCH FIGURE	PACKAGE
0	NATURAL	157.00		24PCS/TRAY
1	BLACK			
2	BLUE			
3	NATURAL	153.00		32PCS/TRAY
4	BLACK			
J	NATURAL	157.00		
K	BLACK			
B	BLUE			
E	NATURAL	153.00		
F	BLACK			

CONTACT AREA PLATING

CODE	CONTACT AREA
11LF	15u" MIN.GOLD
13LF	30u" MIN.GOLD

NOTES:

- MATERIALS:
 HOUSING: HIGH PERFORMANCE RESINS, GLASS FIBER FILLED, UL94 V-0 RATED.
 EJECTOR: HIGH PERFORMANCE RESINS, GLASS FIBER FILLED, UL94 V-0 RATED.
 TERMINAL: COPPER ALLOY
 FORKLOCK: COPPER ALLOY
 SOLDER TAB: COPPER ALLOY
- STENCIL THICKNESS IS NOT LESS THAN 0.15mm.
- DATE CODE "MMDDYYL", MMDDYY IS ASSEMBLY DATE, L IS FCI PRODUCTION LINE.
- SPECIFICATION:
 PRODUCTION SPECIFICATION: FCI GS-12-1092.
 PACKAGE SPECIFICATION: FCI GS-14-2267.
 APPLICATION SPECIFICATION: FCI GS-20-0353.
- LEAD FREE PRODUCT MEETS EUROPEAN UNION DIRECTIVES AND OTHER COUNTRY REGULATIONS AS DESCRIBED IN FCI GS-22-008.
- THIS PRODUCT WILL WITHSTAND EXPOSURE TO 260°C PEAK TEMPERATURE FOR 10 SECONDS IN REFLOW SOLDERING APPLICATION.

spec ref	-	dr	Girder Liang	2019/11/28	projection		mm	size	A3	scale	1:1
tolerance std	ISO 406 ISO 1101	eng	Viking Huang	2023/11/21	chr	-		ecn no	ELX-DG-49858-1		
	TOLERANCES UNLESS OTHERWISE SPECIFIED	appr	Nickor Zuo	2023/11/28	product family	-		rel level	Released		
surface	linear	0.X	±0.30	Amphenol FCI	DDR4 288 PIN DIMM CONNECTOR SMT TERMINATION	cat. no.	-	Product - Customer Drw	sheet 4 of 4	rev	D
		0.XX	±0.20								
	angular	0°	±2°								
ISO 1302											