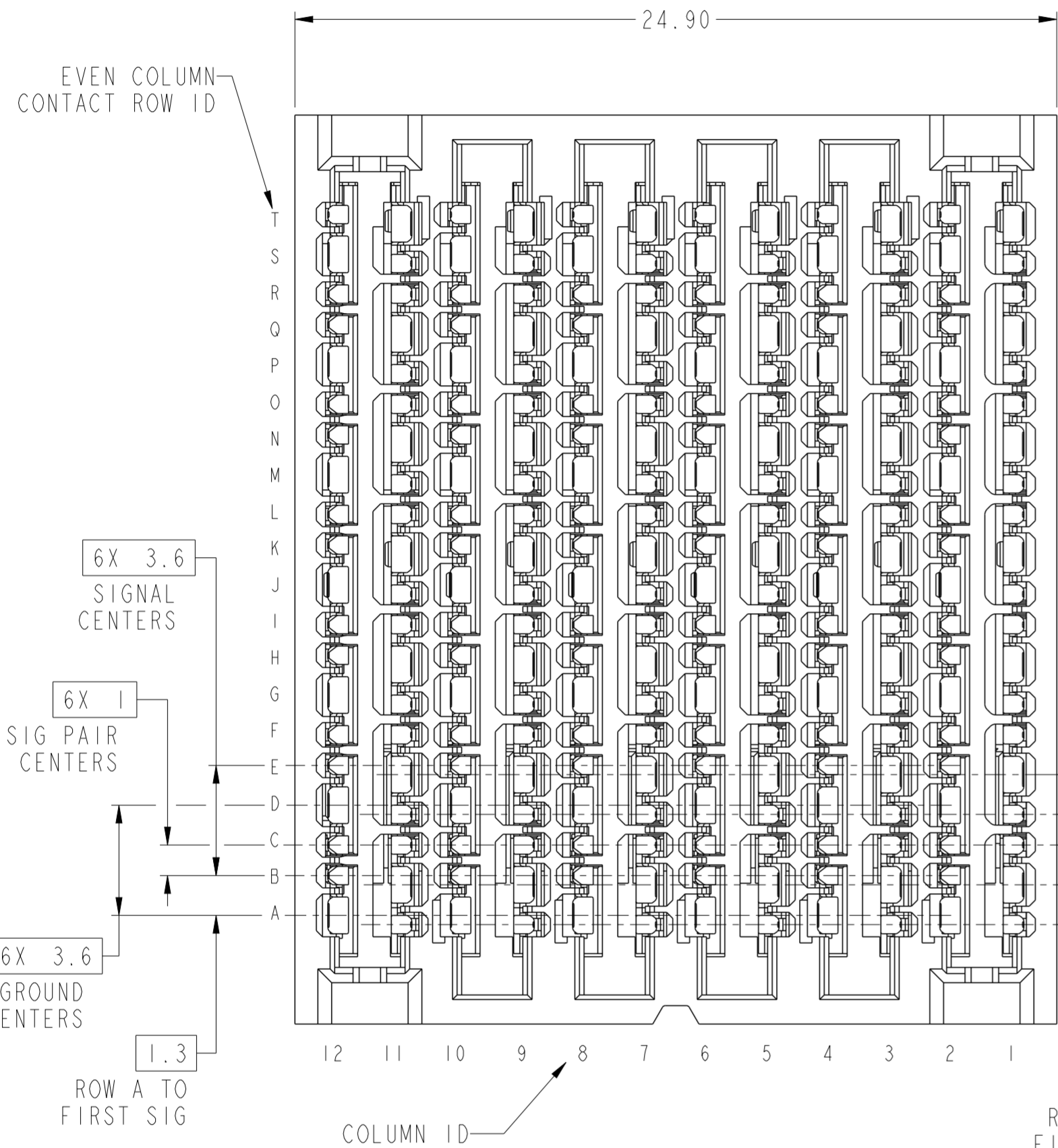
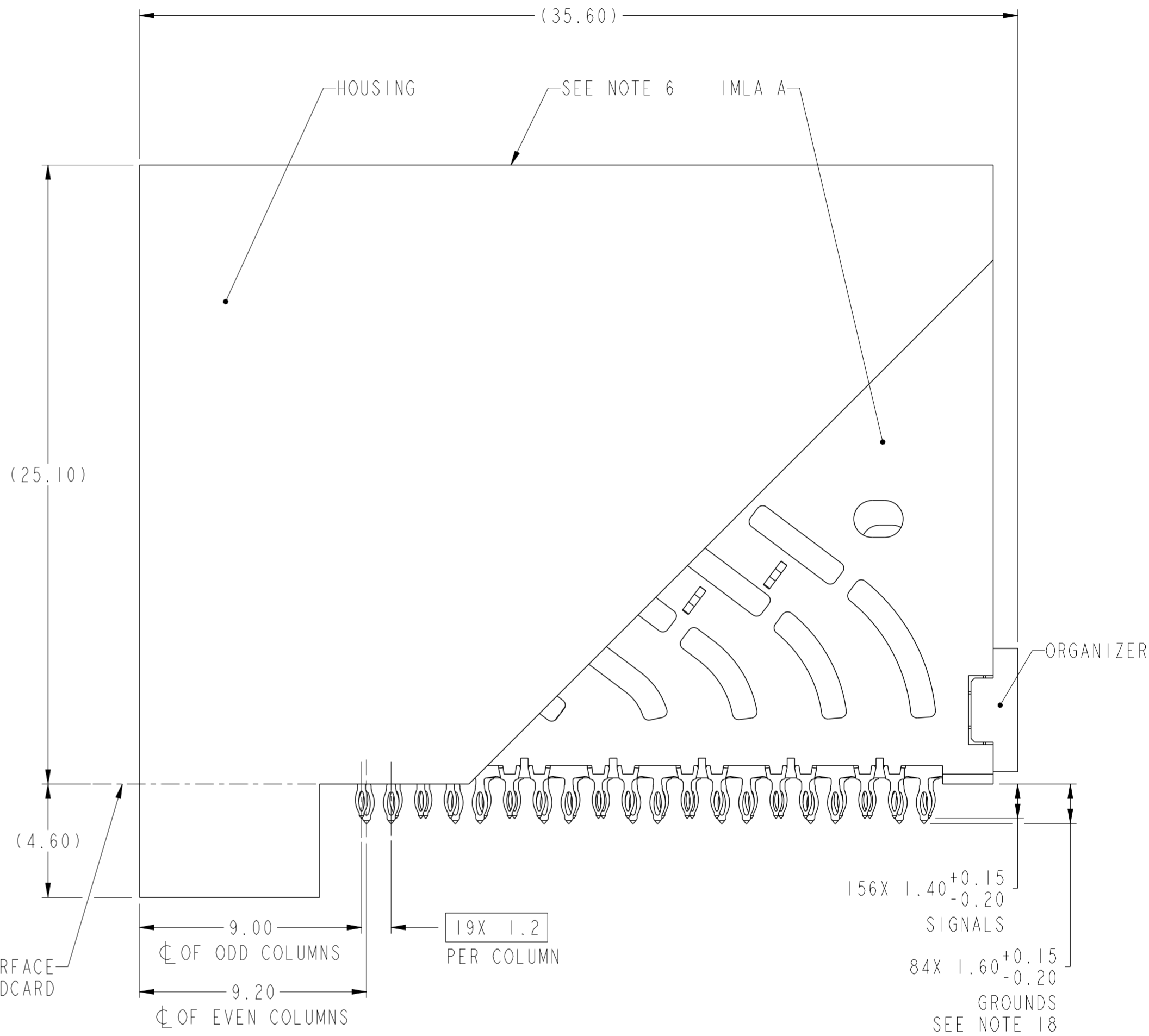


PRODUCT NUMBER
SEE TABLE



ODD COLUMN CONTACT ROW ID ODD & EVEN COLUMNS ARE OFFSET

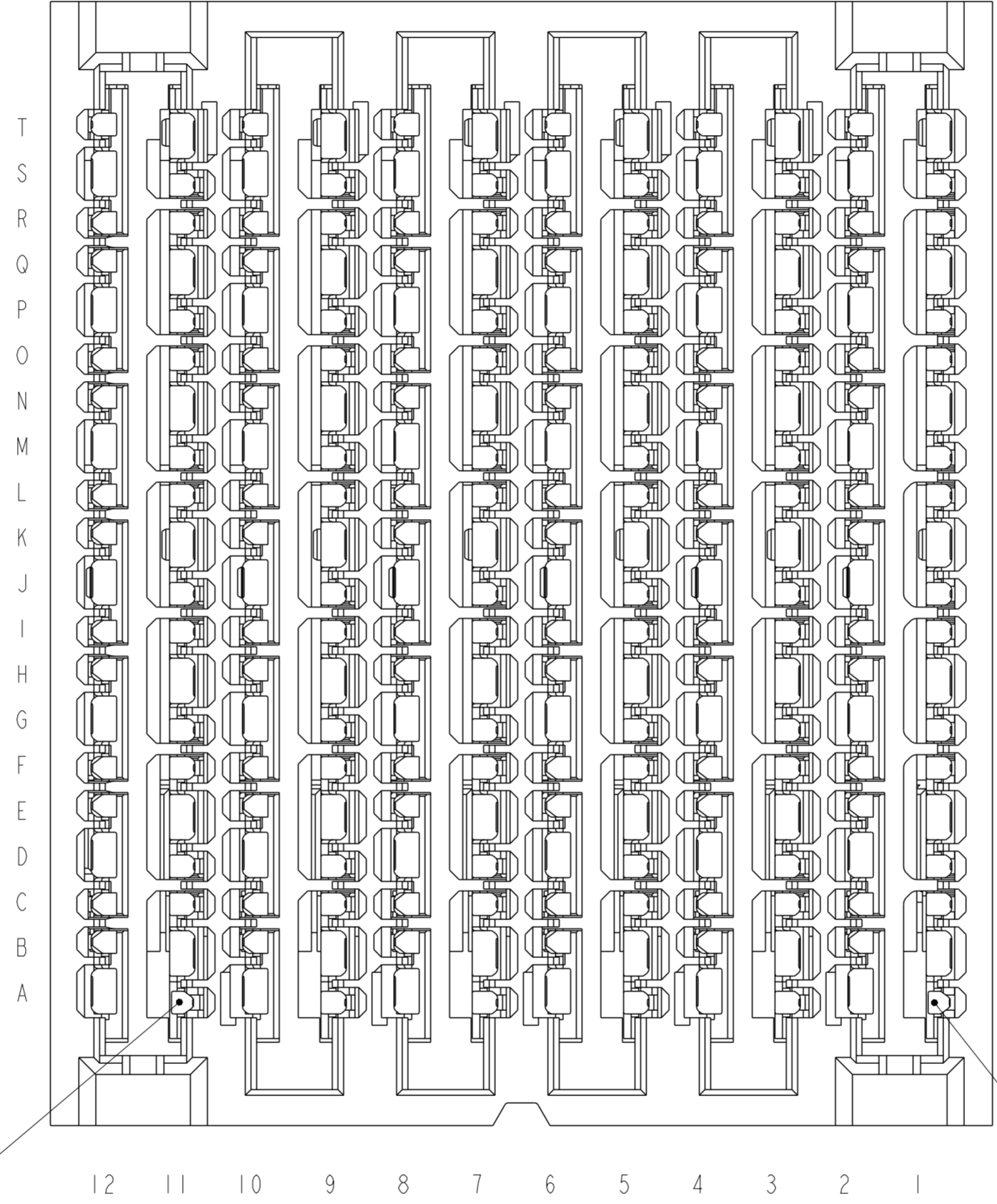


10131766-101LF
STANDARD MATE RECEPTACLE
SCALE 6:1

spec ref	SEE NOTES	dr	Greg Hull	2014/09/22	projection	MM	size	A2	scale	6:1
tolerance std	TOLERANCES UNLESS OTHERWISE SPECIFIED	eng	Peng-Bing Fu	2016/03/31			ecn no	-	rel level	Preliminary
ISO 406		chr	-							
ISO 1101		appr	-		product family	ExaMAX				
surface	linear	0.X	±.3		title		ExaMAX R.A. RECEPTACLE ASSY		dwg no 10131766	rev 9
		0.XX	±.10		6 PR, 12 IMLA, 240 POS, 25mm					
		0.XXX	±.050		cat. no. SEE TABLE					
ISO 1302	angular	0°	±°	Product - Customer Drw		sheet 1 of 11				

Amphenol FCI

© 2016 AFCI



ADVANCED MATE
POSITION A11
SEE NOTE 13

ADVANCED MATE
POSITION A1
SEE NOTE 13

10131766-201LF
ADVANCED MATE RECEPTACLE
ADVANCED MATE POSITIONS ARE A1 AND A11 ONLY
FOR ALL DIMENSIONS SEE 10131766-101LF ON SHEET 1
SCALE 7:1

**Amphenol
FCi**

© 2016 AFci

spec ref	SEE NOTES	dr	Greg Hull	2014/09/22	projection	MM	size	A2	scale	7:1
tolerance std	TOLERANCES UNLESS OTHERWISE SPECIFIED	eng	Peng-Bing Fu	2016/03/31			ecn no	-	rel level	
ISO 406		chr	-							
ISO 1101		appr	-		product family	ExaMAX	rel level	Preliminary		
surface	linear	Amphenol FCi		title		ExaMAX R.A. RECEPTACLE ASSY		dwg no	10131766	
	angular	0°	±°	6 PR, 12 IMLA, 240 POS, 25mm		cat. no.	SEE TABLE	Product - Customer Drw	rev	9
ISO 1302								sheet 2 of 11		

A

B

C

D

E

F

A

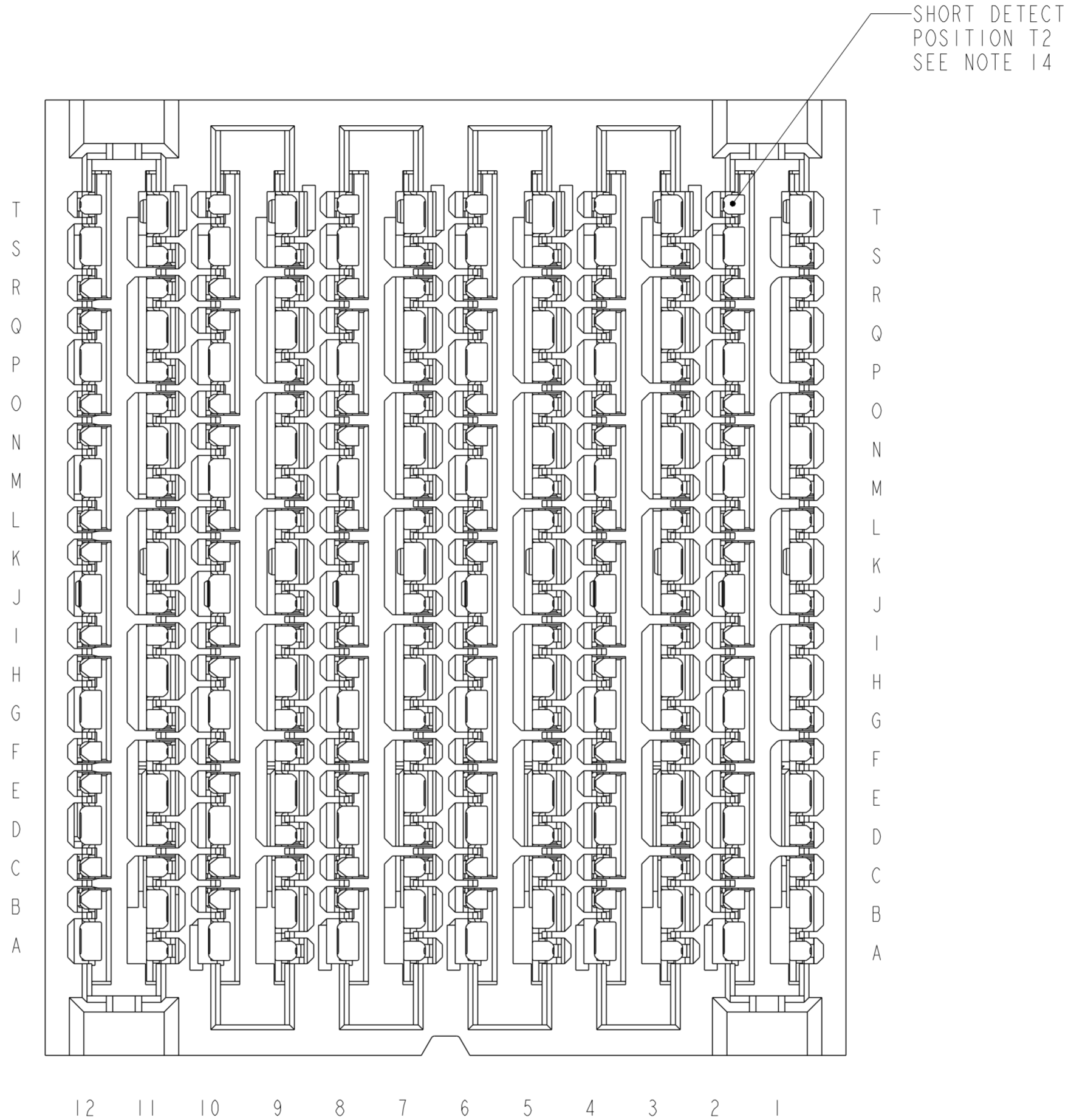
B

C

D

E

F



10131766-301LF
 SHORT DETECT RECEPTACLE
 SHORT DETECT POSITION IS T2
 FOR ALL DIMENSIONS SEE 10131766-101LF ON SHEET 1
 SCALE 7:1

Amphenol
FCi

© 2016 AFCi

spec ref	SEE NOTES	dr	Greg Hull	2014/09/22	projection	MM	size	A2	scale	7:1
tolerance std	TOLERANCES UNLESS OTHERWISE SPECIFIED	eng	Peng-Bing Fu	2016/03/31			ecn no	-	rel level	
ISO 406		chr	-	-			rel level	Preliminary		
ISO 1101		appr	-	-	product family	ExaMAX	title ExaMAX R.A. RECEPTACLE ASSY 6 PR, 12 IMLA, 240 POS, 25mm		dwg no 10131766	rev 9
surface	linear	0.X	±.3	Amphenol FCi		cat. no. SEE TABLE	Product - Customer Drw	sheet 3 of 11		
ISO 1302	angular	0°	±°							

A

B

C

D

E

F

A

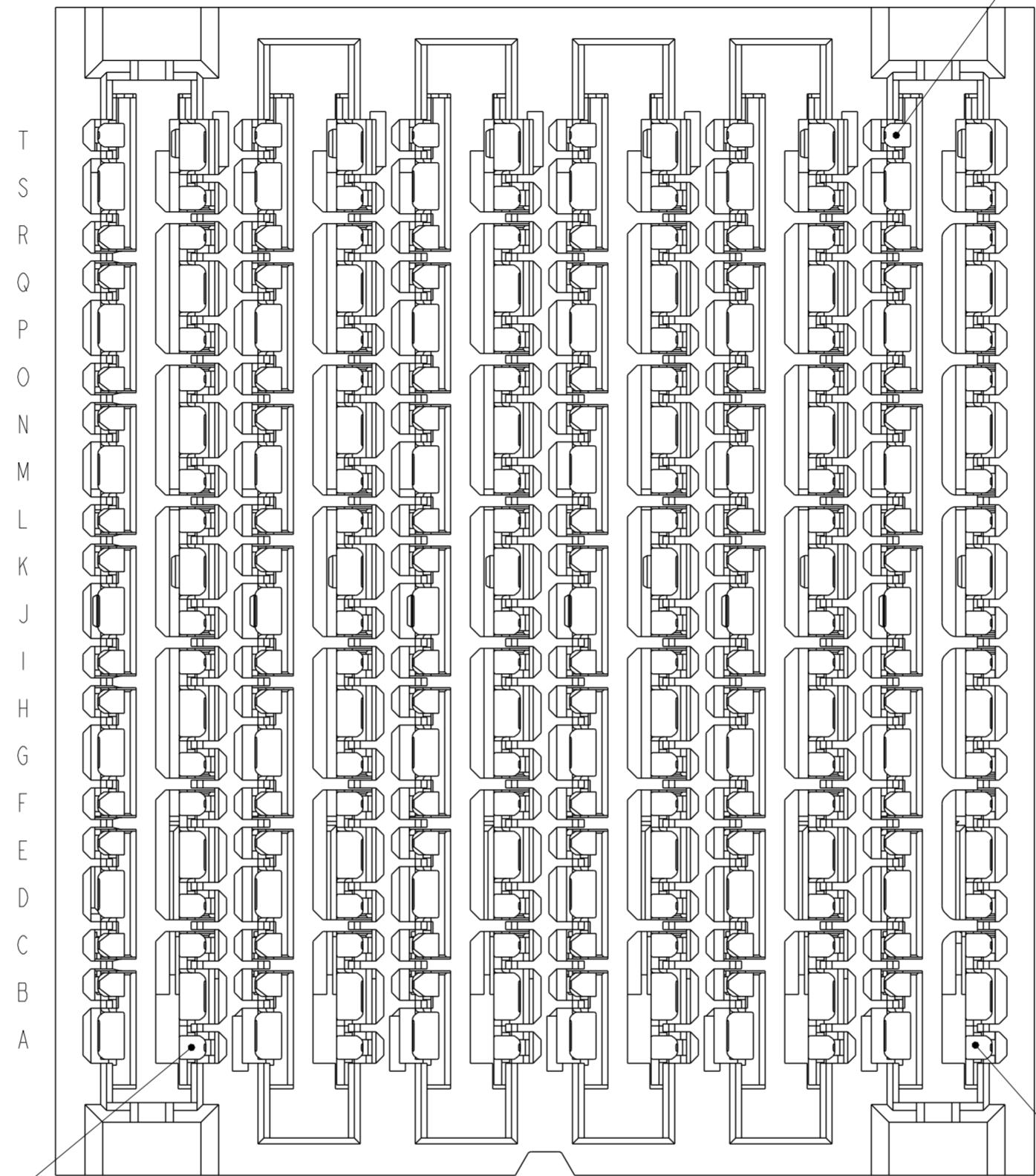
B

C

D

E

F



SHORT DETECT
POSITION T2
SEE NOTE 15

ADVANCED MATE
POSITION A11
SEE NOTE 15

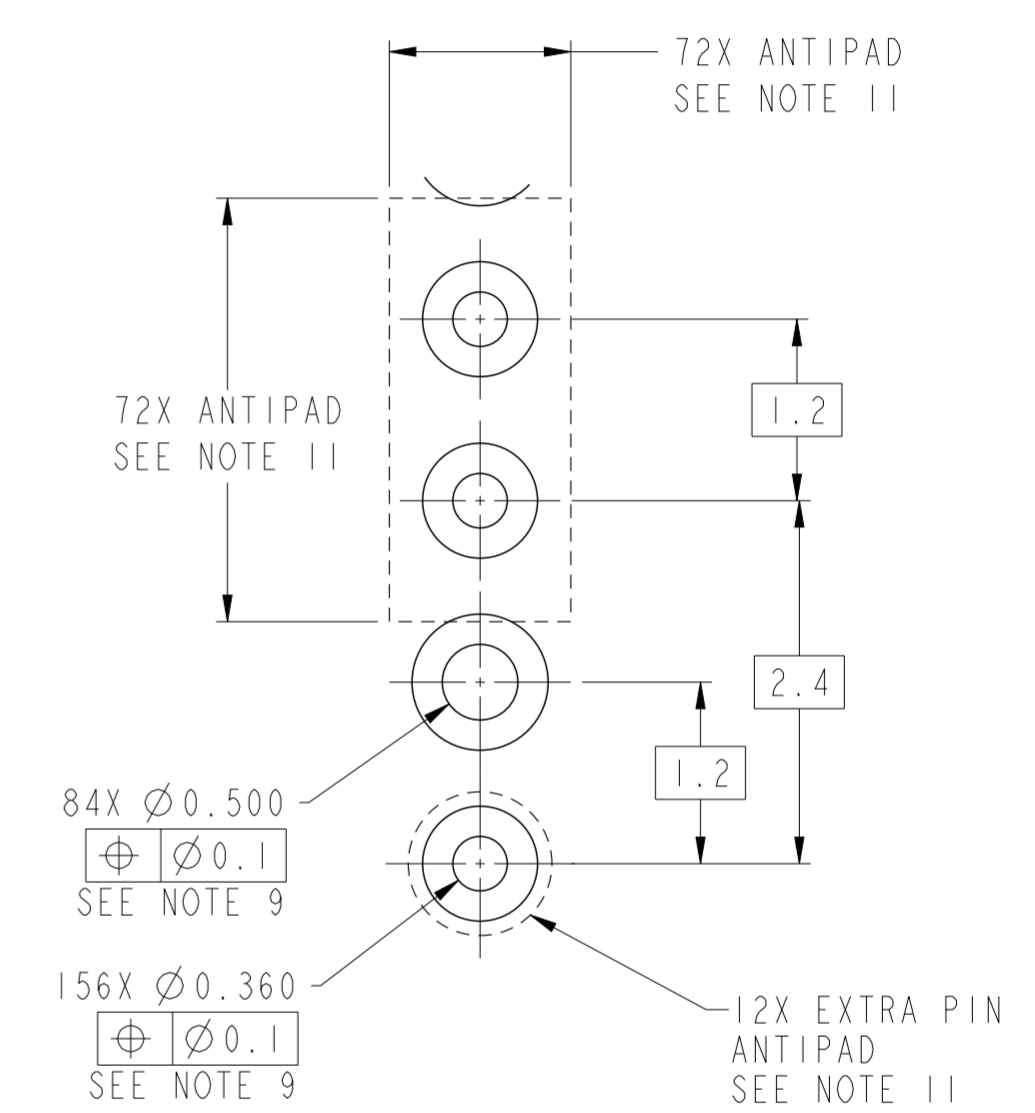
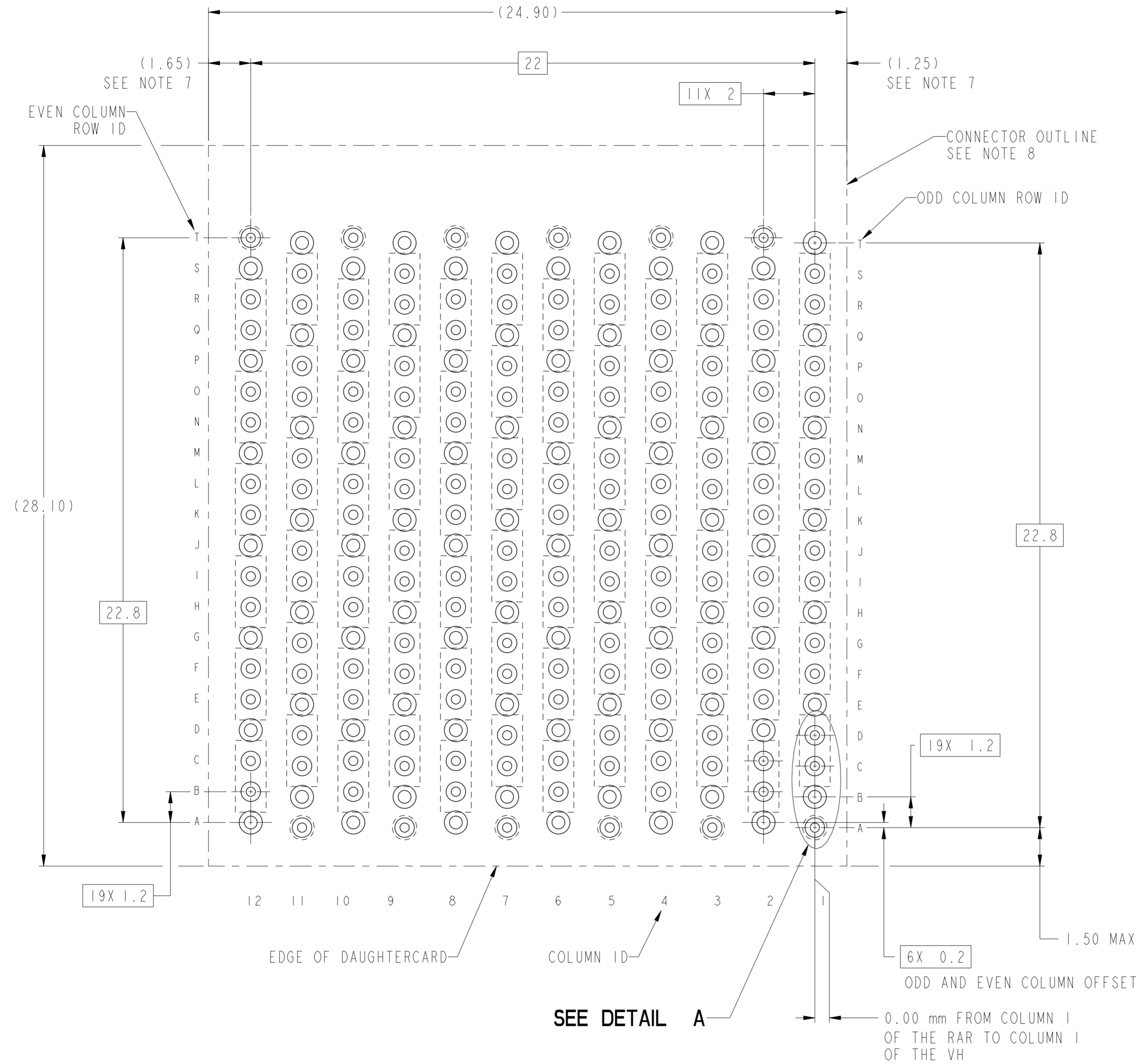
ADVANCED MATE
POSITION A1
SEE NOTE 15

10131766-401LF
ADVANCED MATE/SHORT DETECT RECEPTACLE
 ADVANCED MATE POSITIONS ARE POSITIONS A1 AND A11 ONLY
 SHORT DETECT POSITION IS T2
 FOR ALL DIMENSIONS SEE 10131766-101LF ON SHEET 1
 SCALE 7:1

Amphenol
FCi

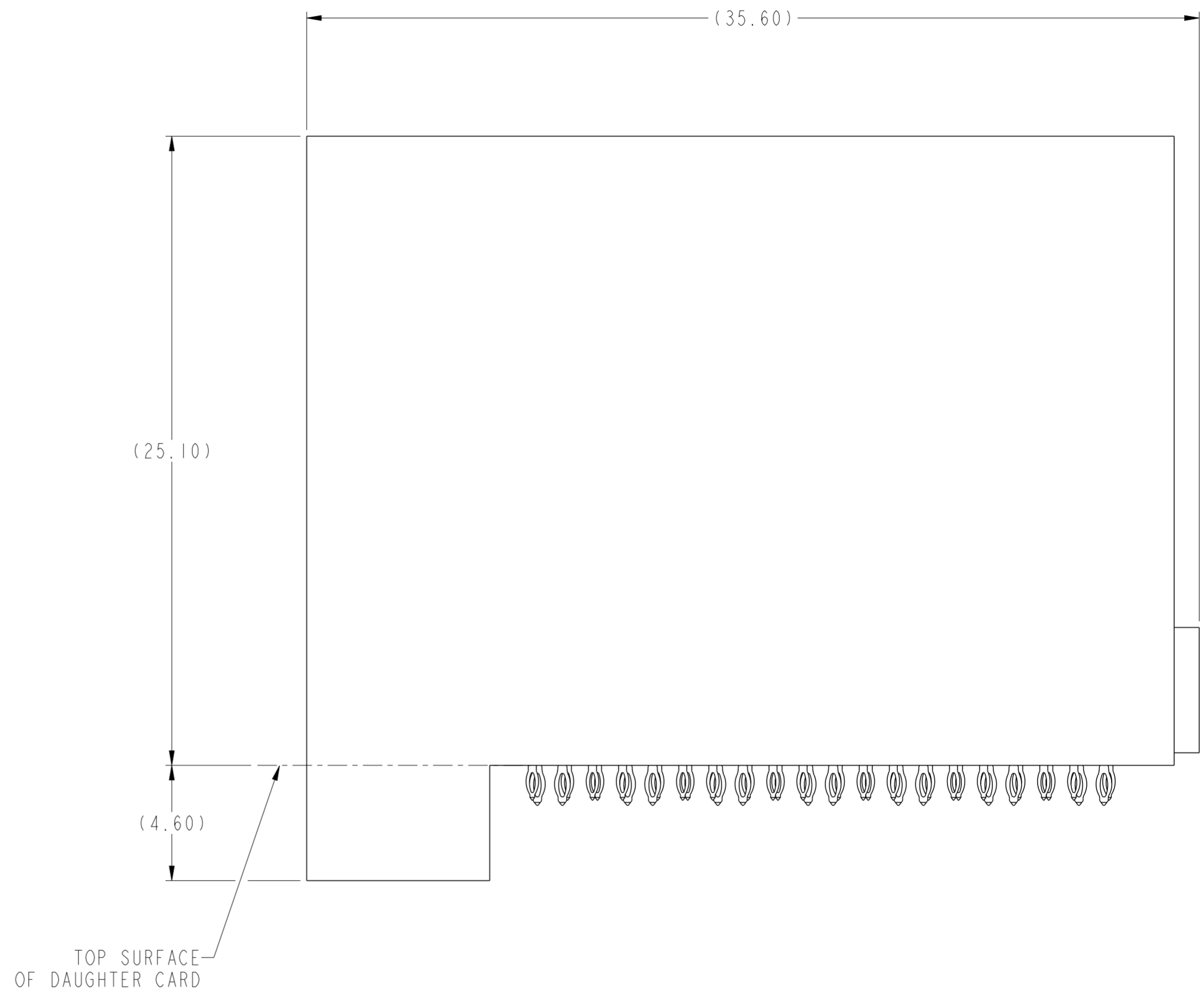
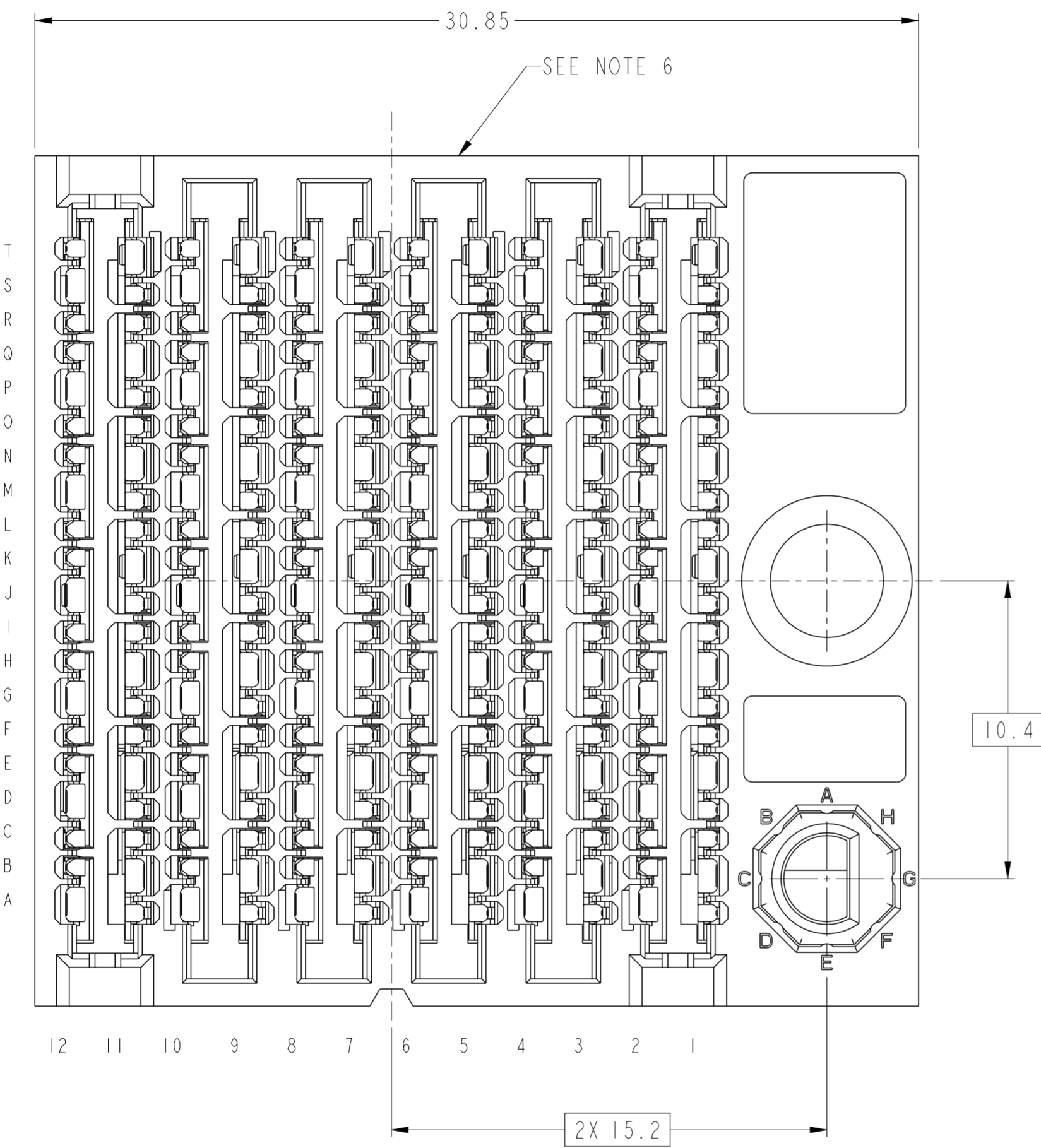
© 2016 AFci

spec ref	SEE NOTES	dr	Greg Hull	2014/09/22	projection	MM	size	A2	scale	7:1
tolerance std	TOLERANCES UNLESS OTHERWISE SPECIFIED	eng	Peng-Bing Fu	2016/03/31			ecn no	-	rel level	
ISO 406		chr	-	-			Product family	ExaMAX	Preliminary	
ISO 1101		appr	-	-	Title		ExaMAX R.A. RECEPTACLE ASSY		cat. no.	SEE TABLE
surface	linear	Amphenol FCi		Title		ExaMAX R.A. RECEPTACLE ASSY		dwg no	10131766	
	angular			Title		6 PR, 12 IMLA, 240 POS, 25mm		rev	9	
ISO 1302	0° ±°			cat. no.		SEE TABLE		Product - Customer Drw		sheet 4 of 11



10131766-X01
 RECOMMENDED PCB LAYOUT
 COMPONENT SIDE
 NOTES 7, 8, 9, & 11
 SCALE 8:1

spec ref	SEE NOTES	dr	Greg Hull	2014/09/22	projection	MM	size	A2	scale	8:1
tolerance std	TOLERANCES UNLESS OTHERWISE SPECIFIED	eng	Peng-Bing Fu	2016/03/31			ecn no	-	rel level	Preliminary
ISO 406		chr	-							
ISO 1101		appr	-		product family	-				
surface	linear	Amphenol FCI		title		ExaMAX R.A. RECEPTACLE ASSY		dwg no	10131766	
ISO 1302	angular			6 PR, 12 IMLA, 240 POS, 25mm				rev	9	
				cat. no.		Product - Customer Drw		sheet 5 of 11		

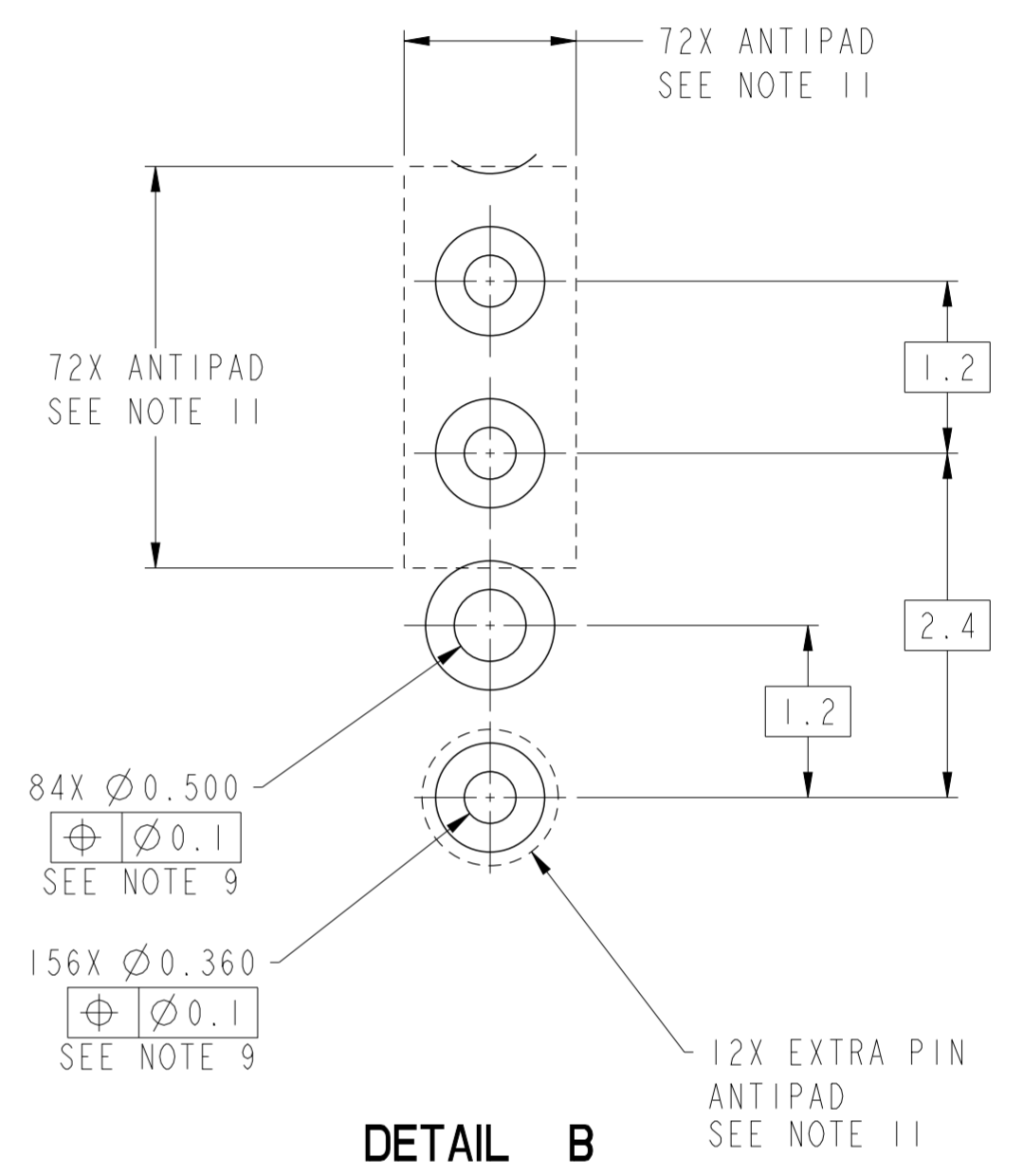
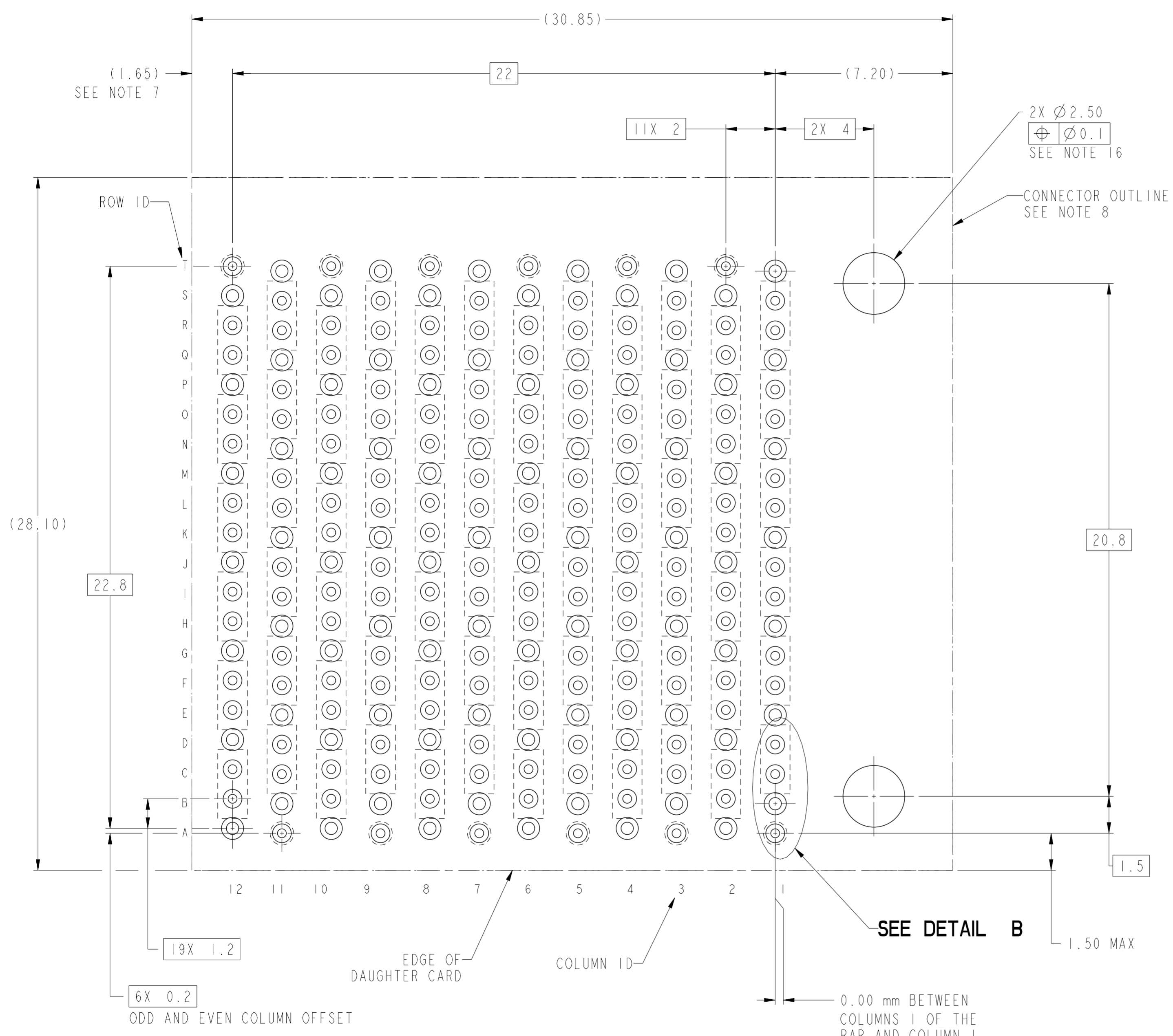


10131766-X1ALF THRU 10131766-X1JLF
 RIGHT GUIDANCE (SEE NOTE 17)
 FOR ALL OTHER DIMENSIONS SEE 10131766-101LF ON SHEET 1
 SCALE 6:1

spec ref	SEE NOTES	dr	Greg Hull	2014/09/22	projection	MM	size	A2	scale	6:1
tolerance std	TOLERANCES UNLESS OTHERWISE SPECIFIED	eng	Peng-Bing Fu	2016/03/31			ecn no	-	rel level	Preliminary
ISO 406 ISO 1101		chr	-	product family			ExaMAX			
surface	linear	0.X	±.3	Amphenol FCI	title ExaMAX R.A. RECEPTACLE ASSY		dwg no 10131766	rev 9	cat. no. SEE TABLE	
		0.XX	±.10		6 PR, 12 IMLA, 240 POS, 25mm				Product - Customer Drw	
ISO 1302	angular	0°	±°		sheet 6 of 11					

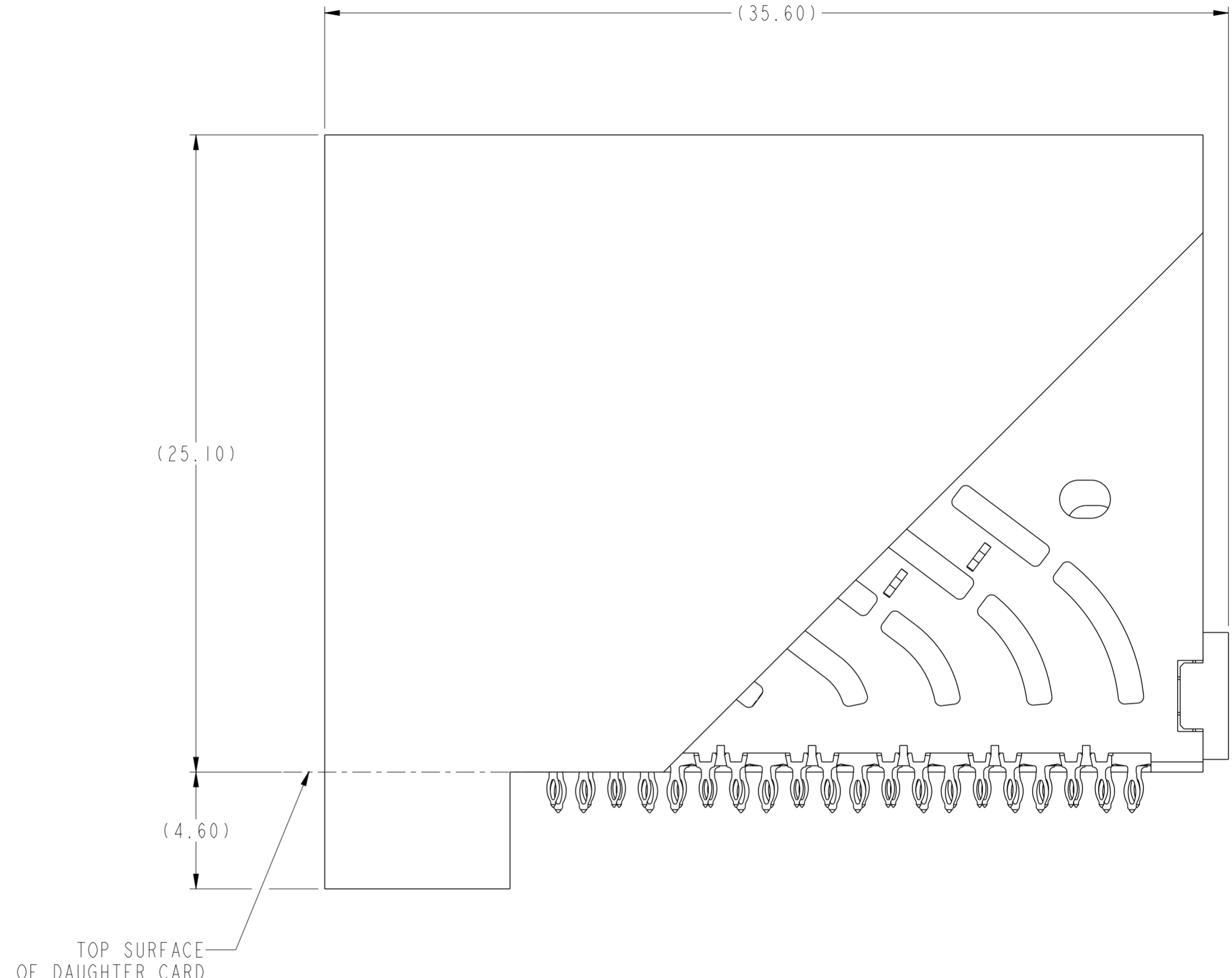
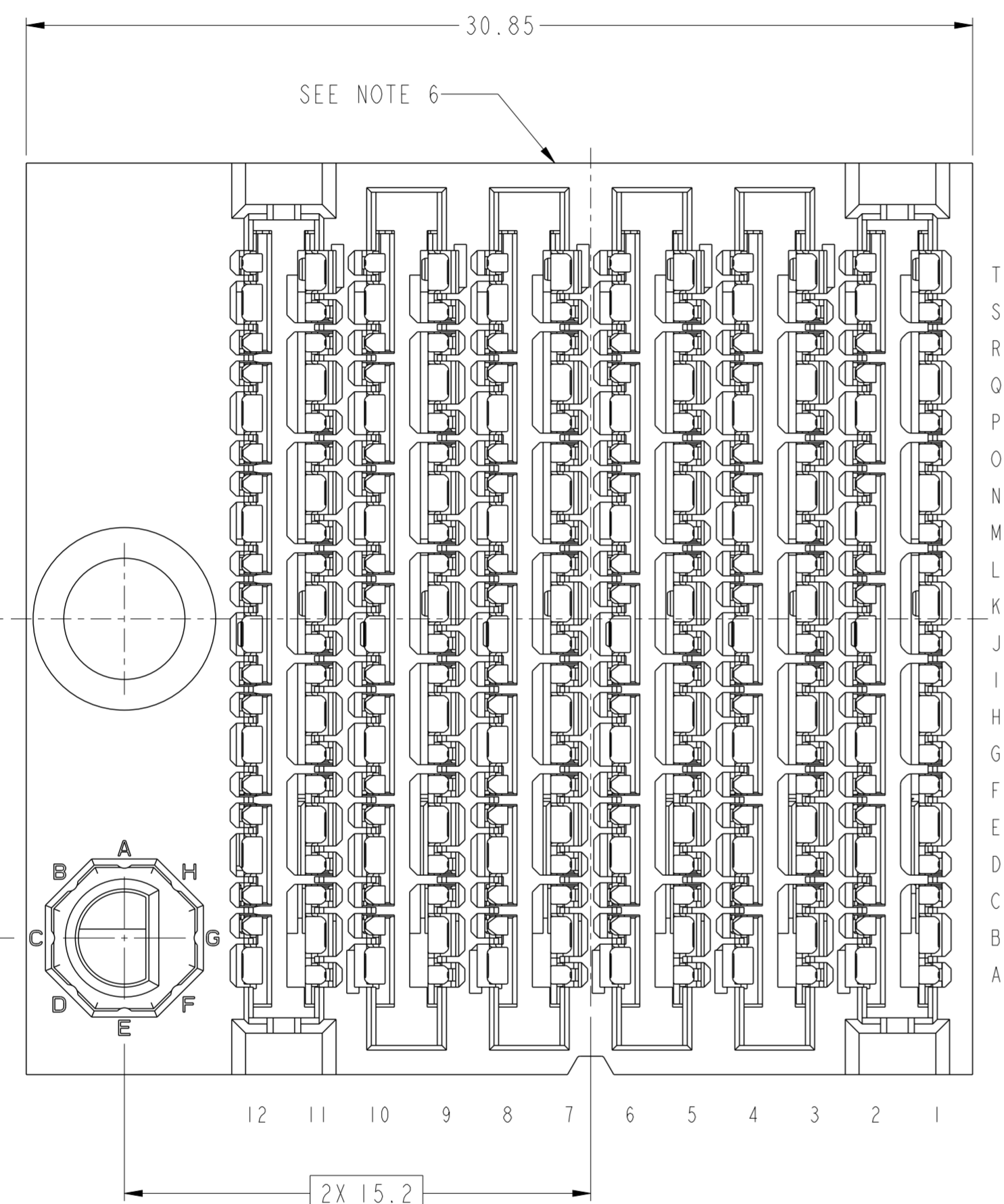
Amphenol FCI

© 2016 AFCI



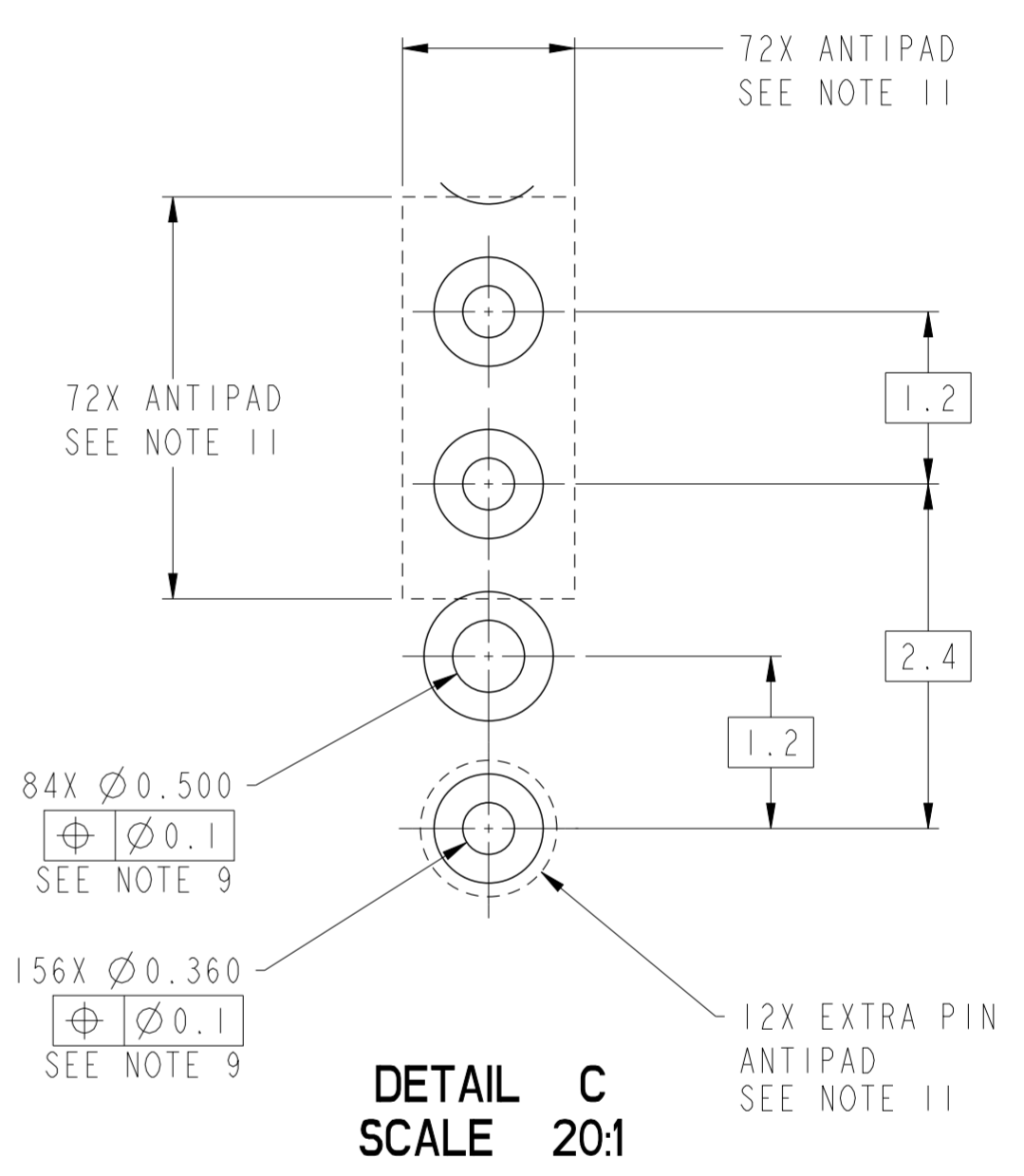
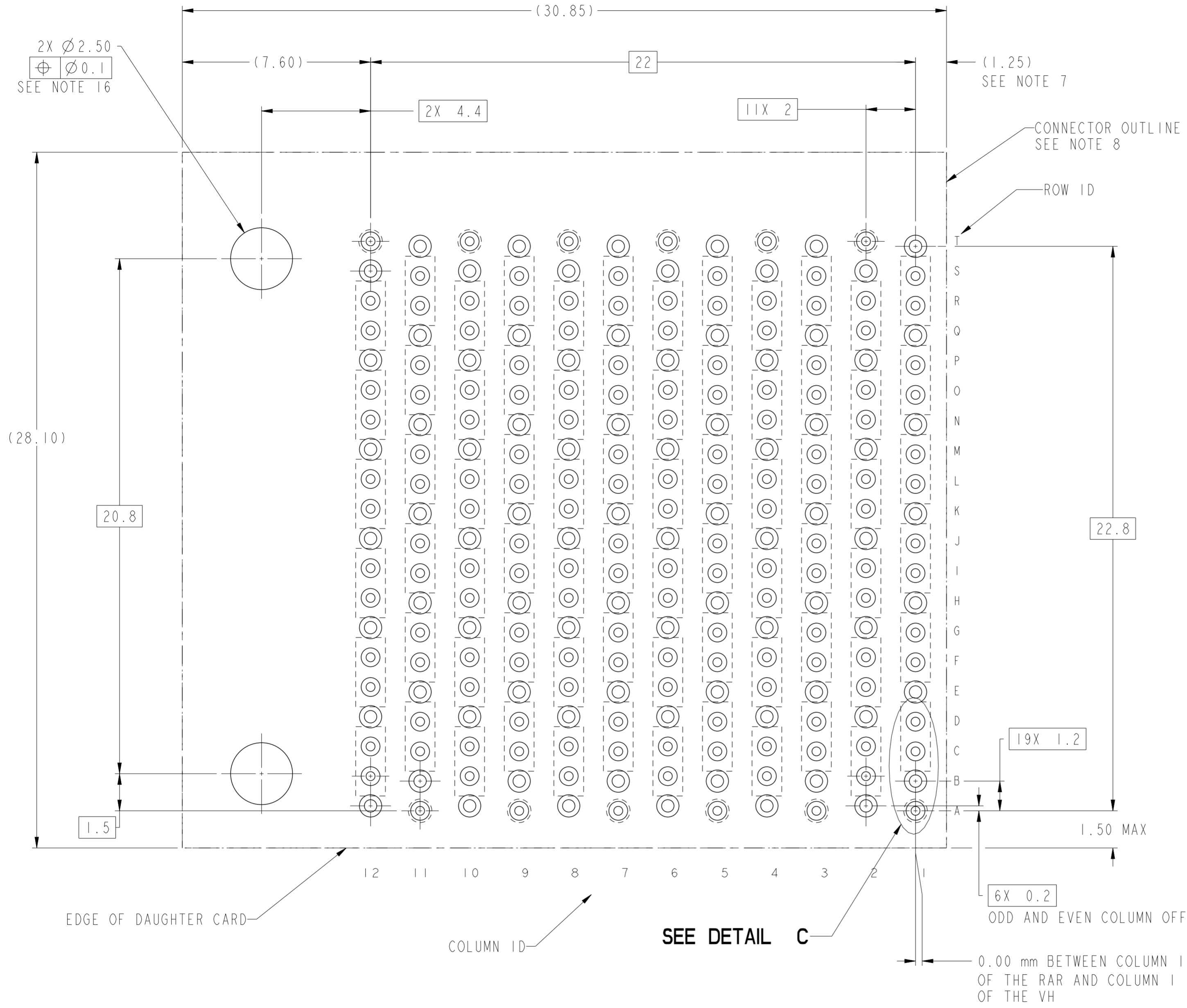
**10131766-X1ALF THRU -X1JLF
RECOMMENDED PCB LAYOUT
COMPONENT SIDE
NOTES 7, 8, 9, 11 & 16
SCALE 8:1**

spec ref	SEE NOTES	dr	Greg Hull	2014/09/22	projection	MM	size	A2	scale	1:1
tolerance std	TOLERANCES UNLESS OTHERWISE SPECIFIED	eng	Peng-Bing Fu	2016/03/31			ecn no	-	rel level	Preliminary
ISO 406		chr	-							
ISO 1101		appr	-		product family	-				
surface	linear	Amphenol FCI			title			ExaMAX R.A. RECEPTACLE ASSY		
	0.X ±.3	6 PR, 12 IMLA, 240 POS, 25mm			dwg no			10131766		
	0.XX ±.10	cat. no.			Product - Customer Drw			sheet 7 of 11		
	0.XXX ±.050									
	angular									
	0° ±°									



10131766-X2ALF THRU 10131766-X2JLF
LEFT GUIDANCE (SEE NOTE 17)
FOR ALL OTHER DIMENSIONS SEE 10131766-101LF ON SHEET 1
SCALE 6:1

spec ref	SEE NOTES	dr	Greg Hull	2014/09/22	projection	MM	size	A2	scale	6:1
tolerance std	TOLERANCES UNLESS OTHERWISE SPECIFIED	eng	Peng-Bing Fu	2016/03/31			ecn no	-	rel level	Preliminary
ISO 406		chr	-	product family			ExaMAX			
ISO 1101		appr	-	Amphenol FCI		title	ExaMAX R.A. RECEPTACLE ASSY		dwg no	10131766
surface	linear	0.X	±.3	Amphenol FCI		6 PR, 12 IMLA, 240 POS, 25mm	rev	9	Product - Customer Drw	
ISO 1302	angular	0.XXX	±.050	cat. no.	SEE TABLE	Product - Customer Drw	sheet 8 of 11			



**10131766-X2ALF THRU -X2JLF
RECOMMENDED PCB LAYOUT
COMPONENT SIDE
NOTES 7, 8, 9, 11 & 16
SCALE 8:1**

spec ref	SEE NOTES	dr	Greg Hull	2014/09/22	projection	MM	size	A2	scale	8:1
tolerance std	TOLERANCES UNLESS OTHERWISE SPECIFIED	eng	Peng-Bing Fu	2016/03/31			ecn no	-	rel level	Preliminary
ISO 406		chr	-							
ISO 1101		appr	-		product family	-				
surface	linear	0.X	±.3		title ExaMAX R.A. RECEPTACLE ASSY 6 PR, 12 IMLA, 240 POS, 25mm		dwg no 10131766	rev 9	cat. no. - Product - Customer Drw sheet 9 of 11	
		0.XX	±.10							
		0.XXX	±.050							
ISO 1302	angular	0°	±°							

10131766 - Y Y Y L F

ASSEMBLY PART NUMBER	DESCRIPTION
10131766-1YYLF	STANDARD MATE
10131766-2YYLF	ADVANCED MATE
10131766-3YYLF	SHORT DETECT
10131766-4YYLF	ADVANCED MATE & SHORT DETECT

MODULE DESCRIPTION	DESIGNATION REPRESENTED IN DASH NUMBER										BASE MODEL
	1A	1B	1C	1D	1E	1F	1G	1H	1J (NO KEY)		
WITHOUT END GUIDES MODULE (SEE SHEET 1)	01										
RIGHT GUIDANCE MODULE (SEE SHEET 6)											
LEFT GUIDANCE MODULE (SEE SHEET 8)											

Amphenol FCI

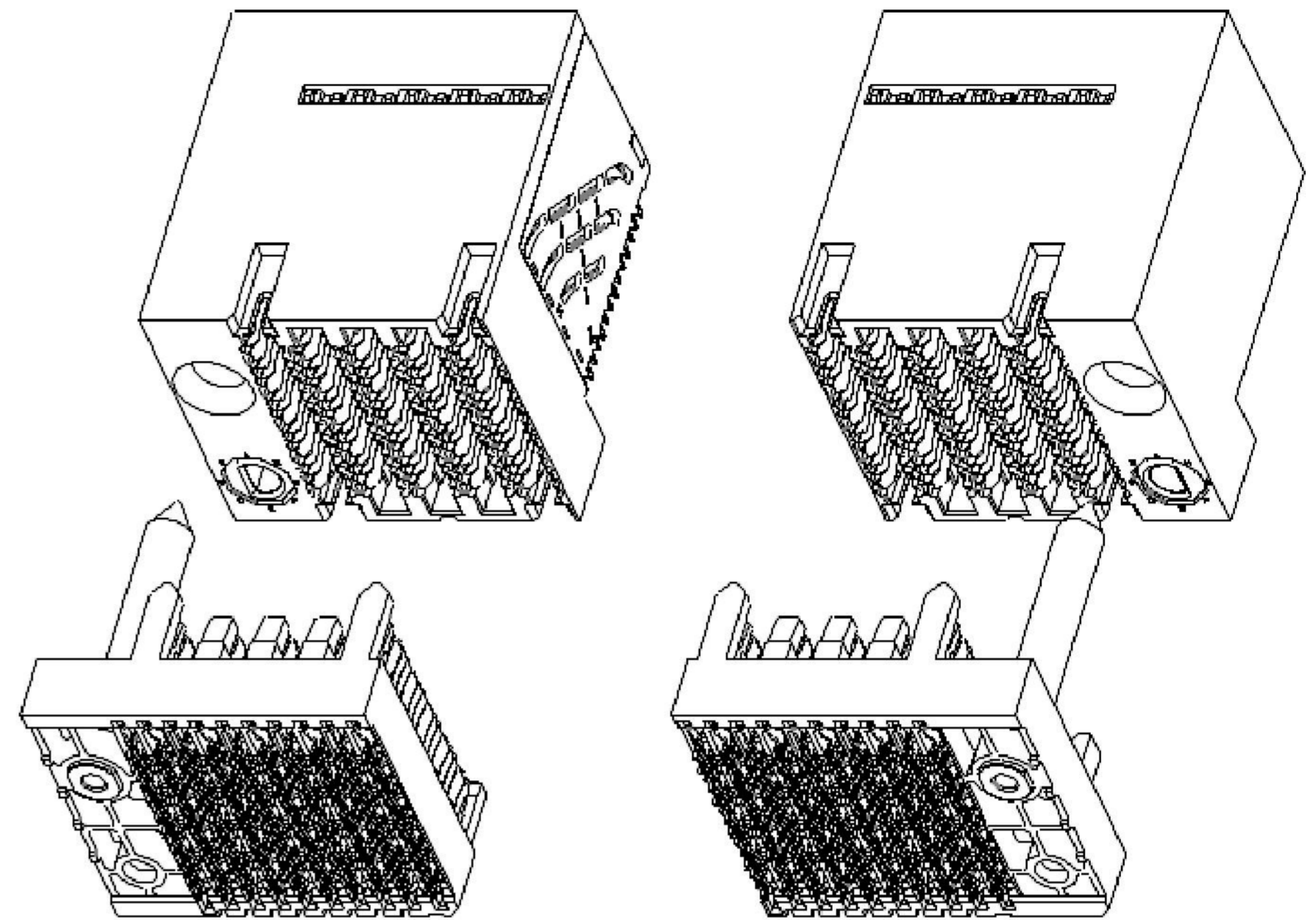
© 2016 AFCI

spec ref	SEE NOTES	dr	Greg Hull	2014/09/22	projection	MM	size	A2	scale	1:1
tolerance std	TOLERANCES UNLESS OTHERWISE SPECIFIED	eng	Peng-Bing Fu	2016/03/31		←→	ecn no	-	rel level	Preliminary
ISO 406		chr	-	product family			-			
ISO 1101		appr	-	Amphenol FCI			title	ExaMAX R.A. RECEPTACLE ASSY		dwg no
surface	linear	0.X	±.3	6 PR, 12 IMLA, 240 POS, 25mm	cat. no.	-	Product - Customer Drw	sheet 10 of 11		
ISO 1302	angular	0°	±°							

NOTES:

- ① - CONNECTOR MATERIALS:
HOUSING: HIGH TEMP THERMOPLASTIC, BLACK, UL94-V0
IMLA PLASTIC: HIGH TEMP THERMOPLASTIC, BLACK, UL94-V0
CONTACT: COPPER ALLOY
ORGANIZER: HIGH TEMP THERMOPLASTIC, BLACK, UL94-V0
- 2 - CONTACT PLATING:
SEPARABLE INTERFACE:
PERFORMANCE-BASED PLATING, QUALIFIED TO MEET THE REQUIREMENTS OF FCI PRODUCT SPECIFICATION GS-12-1096 INCLUDING TELCORDIA GR-1217-CORE (NOVEMBER 1995) CENTRAL OFFICE TEST SEQUENCE

PRESS-FIT TAILS:TIN OVER NICKEL (LEAD FREE)
- 3 - PRODUCT SPECIFICATION: GS-12-1096
- 4 - APPLICATION SPECIFICATION GS-20-0361.
- 5 - PACKAGING MEETS GS-14-920 LEAD FREE LABELING SPECIFICATION.
- ⑥ - PRODUCT MARKING, (PART NUMBER & LOT CODE), ON THIS SURFACE.
- ⑦ - THE MINIMUM VIA SPACING BETWEEN STACKED CONNECTORS IS 3.0 MM FOR THIS RAR AND THE MATING HEADER. REFER TO THE APPLICATION SPECIFICATION FOR DETAILS
- ⑧ - CONNECTOR OUTLINE MAY BE SCREEN PRINTED ONTO CUSTOMER PCB TO BE USED AS A GUIDE FOR MANUAL CONNECTOR PLACEMENT.
- ⑨ - REFER TO CUSTOMER DRAWING 10119933 FOR INFORMATION ON PCB HOLE DIAMETERS AND PLATING OPTIONS
- 10 - THIS PRODUCT MEETS THE EUROPEAN UNION DIRECTIVES & OTHER COUNTRY REGULATIONS AS DESCRIBED IN GS-47-0004.
- ⑪ - REFER TO APPLICATION SPECIFICATION FOR TRACE ROUTING EXAMPLES THAT INCLUDE DIMENSIONS FOR ANTIPADS, TRACE WIDTH, TRACE SPACING, ETC.
- 12 - THE HOUSING WILL WITHSTAND EXPOSURE TO 260° C FOR 10-30 SECONDS IN A CONVECTION, INFRA-RED OR VAPOR PHASE REFLOW OVEN.
- ⑬ - THE ADVANCED MATE RECEPTACLE, 10131766-2XXLF, WHEN MATED WITH AN ADVANCED MATE VERTICAL HEADER OR AN ADVANCED MATE RIGHT-ANGLE HEADER, WILL PROVIDE 2 PAIRS OF MATING CONTACTS THAT MATE 0.75mm BEFORE THE REMAINDER OF THE SIGNAL AND GROUND CONTACTS.
- ⑭ - THE SHORT DETECT RECEPTACLE, 10131766-3XXLF, WHEN MATED WITH A STANDARD MATE VERTICAL HEADER OR A STANDARD MATE RIGHT-ANGLE HEADER WILL PROVIDE 1 PAIR OF MATING CONTACTS THAT MATE 1.00mm AFTER THE REMAINDER OF THE SIGNAL AND GROUND CONTACTS.
- ⑮ - THE ADVANCE MATE/SHORT DETECT RECEPTACLE, 10131766-4XXLF, WHEN MATED WITH AN ADVANCED MATE VERTICAL HEADER OR AN ADVANCED MATE RIGHT-ANGLE HEADER WILL PROVIDE 2 PAIRS OF MATING CONTACTS THAT MATE 0.75mm BEFORE THE REMAINDER OF THE SIGNAL AND GROUND CONTACTS AND 1 PAIR OF MATING CONTACTS THAT MATE 1.00mm AFTER THE REMAINDER OF THE SIGNAL AND GROUND CONTACTS.
- ⑯ - FOR CONNECTORS WITH EITHER A RIGHT OR LEFT GUIDE MODULE, TWO PHILLIPS PAN HEAD M2 HOLD DOWN SCREWS MUST BE USED TO SECURE THE CONNECTOR TO THE PCB. THE SCREW LENGTH SHALL BE 2.0-6.0mm PLUS THE THICKNESS OF THE BOARD. SCREWS ARE NOT PROVIDED WITH CONNECTOR.
- ⑰ - LEFT / RIGHT INTEGRATED GUIDE ORIENTATION IS DETERMINED BY THE LOCATION OF THE GUIDE FEATURES WHEN LOOKING AT THE MATING FACE OF THE RIGHT ANGLE RECEPTACLE. THE LEFT / RIGHT DESIGNATION OF THE MATING HEADER IS DEFINED BY THE RIGHT ANGLE RECEPTACLE THAT IT MATES WITH (i.e. A RIGHT GUIDE VERTICAL HEADER MATES WITH A RIGHT GUIDE RIGHT ANGLE RECEPTACLE.)
- ⑱ - ALL GROUND CONTACTS ARE COMMONED WITHIN A COLUMN.



LEFT GUIDE

RIGHT GUIDE

**ExaMAX INTEGRATED GUIDE ORIENTATION
4 PAIR 10 IMLA CONNECTORS SHOWN FOR REFERENCE ONLY
SEE NOTE 17**

spec ref	SEE NOTES	dr	Greg Hull	2014/09/22	projection	MM	size	A2	scale	6:1	
tolerance std	TOLERANCES UNLESS OTHERWISE SPECIFIED	eng	Peng-Bing Fu	2016/03/31			ecn no	-	rel level	Preliminary	
ISO 406		chr	-								
ISO 1101		appr	-		product family	ExaMAX					
surface	linear	0.X	±.3		title		ExaMAX R.A. RECEPTACLE ASSY	dwg no	10131766	rev	9
		0.XX	±.10		6 PR, 12 IMLA, 240 POS, 25mm						
	angular	0.XXX	±.050		cat. no.	SEE TABLE	Product - Customer Drw	sheet 11 of 11			
ISO 1302		0°	±°								

Amphenol FCI

© 2016 AFCI