

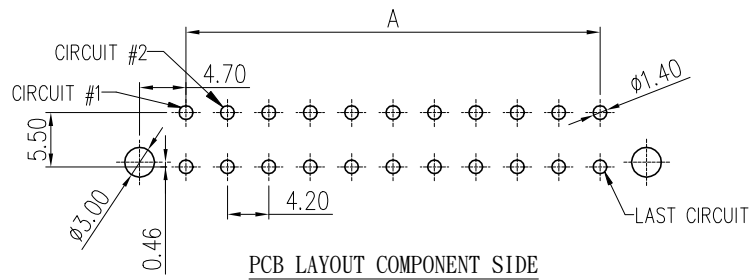
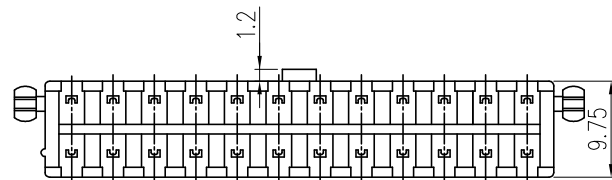
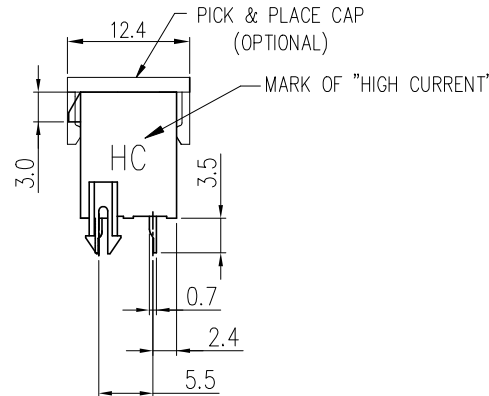
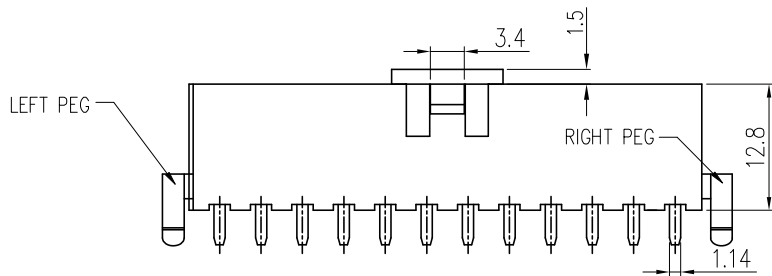
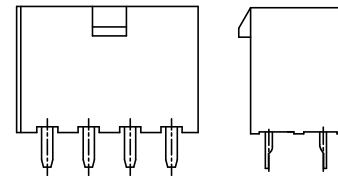
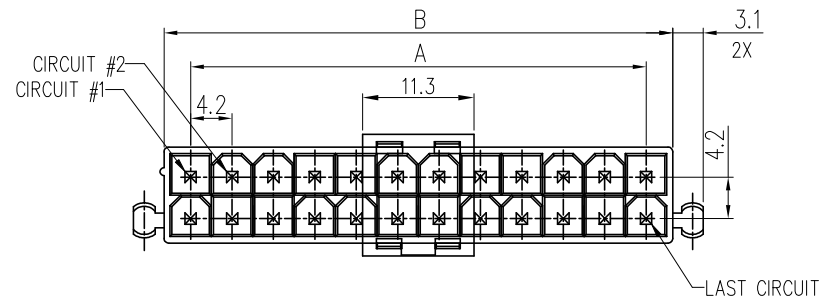
PRODUCT NUMBER  
SEE PART NO. TABLE

NOTES:

- MATERIAL:  
HSG: UL94V-0. OPTIONAL MATERIAL AND COLORS.  
TERMINAL: HIGH CONDUCTIVITY COPPER ALLOY.  
PLATING: OPTIONAL.  
PICK & PLACE CAP: HIGH TEMP. THERMOPLASTIC
  - THIS HEADER MATES WITH FCI RECEPTACLE WIRE CONNECTOR 10127815, CRIMP WITH 10130517 FOR HIGH CURRENT APPLICATION.
  - PRODUCT SPECIFICATION: GS-12-1333.
  - PACKAGE SPECIFICATION: GS-14-2362.
  - THE HOUSING WILL WITHSTAND EXPOSURE TO 235°C PEAK TEMPERATURE FOR 5 SECONDS IN A WAVE SOLDER APPLICATION WITH NYLON66.
  - THE HOUSING WILL WITHSTAND EXPOSURE TO 260 °C PEAK TEMPERATURE FOR 10 SECONDS IN A REFLOW OVEN. (FOR LCP ONLY)
  - PART NUMBER SCHEME:  
10131319- XX X X X X X LF
- POS. CODE: \_\_\_\_\_ LOCATING PEG(PACKAGING):  
 02: 2 POS. O: NONE(TRAY)  
 04: 4 POS. P: BOTH PEGS(TRAY)  
 24: 24 POS. L: LEFT PEG ONLY(TRAY)  
 T: NONE(TAPE&REEL+CAP)  
 R: BOTH PEGS(TAPE&REEL+CAP)  
 K: LEFT PEG ONLY(TAPE&REEL+CAP)  
 U: NONE(TAPE&REEL)  
 V: BOTH PEGS(TAPE&REEL)  
 W: LEFT PEG ONLY(TAPE&REEL)
- PLATING CODE: \_\_\_\_\_  
 1: GOLD FLASH OVER ALL  
 2: 100u" MATTE TIN OVER ALL  
 4: 30u" GOLD ON CONTACT AREA,  
 100u" MATTE TIN ON SOLDER TAIL.
- HSG COLOR:  
 1: NATURAL  
 2: BLACK
- HSG MATERIAL:  
 1: NYLON 66  
 2: LCP
- GLOW WIRE COMPATIBLE:  
 O: NO  
 G: YES

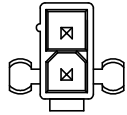
8. DIMENSIONAL & PART NO. TABLE:

PART NUMBER	POS.	A	B
10131319-02XXXXXL	02	5.4	
10131319-04XXXXXL	04	4.2	9.6
10131319-06XXXXXL	06	8.4	13.8
10131319-08XXXXXL	08	12.6	18.0
10131319-10XXXXXL	10	16.8	22.2
10131319-12XXXXXL	12	21.0	26.4
10131319-14XXXXXL	14	25.2	30.6
10131319-16XXXXXL	16	29.4	34.8
10131319-18XXXXXL	18	33.6	39.0
10131319-20XXXXXL	20	37.8	43.2
10131319-22XXXXXL	22	42.0	47.4
10131319-24XXXXXL	24	46.2	51.6

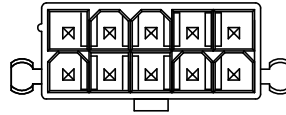


PCB LAYOUT COMPONENT SIDE

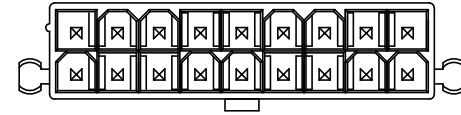
mat'l. code		surface	tolerance	projection	product family	
			✓		MINITEK PWR4.2 HCC	
ltr	ecn no dr date	tolerances unless otherwise specified			title	
H	ELX-N-30661 TONY 2018-12-13	angles	X.X ±0.4			mm
		X*±1'	X.XX ±0.30	scale N.T.S.		
D	ELX-T-25072 TAI 2016-10-03 dr	KENNY TAI	2014-08-12		dwg no sheet 1 of 2 size	
E	ELX-N-26672 TONY 2017-03-14 engr	KENNY TAI	2014-08-12			10131319
F	ELX-N-27202 TONY 2017-06-12 chr	KENNY TAI	2014-08-12			
G	ELX-N-27450 TONY 2017-07-13 appd	PM ZHENG	2014-08-29			
sheet	revision H H				type Product Customer Drawing	
index	sheet 1 2					



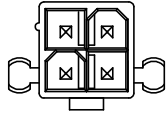
2 POS



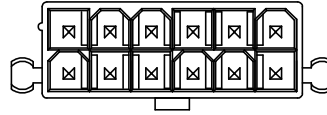
10 POS



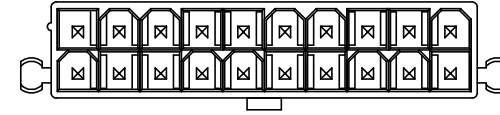
18 POS



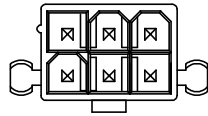
4 POS



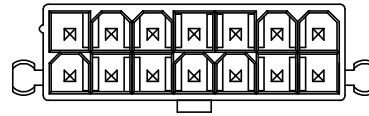
12 POS



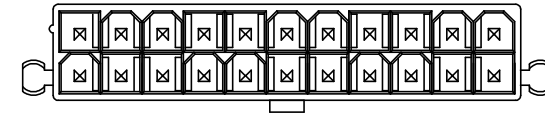
20 POS



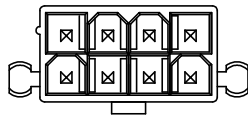
6 POS



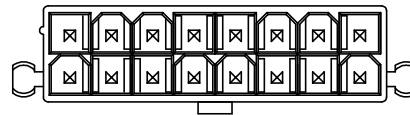
14 POS



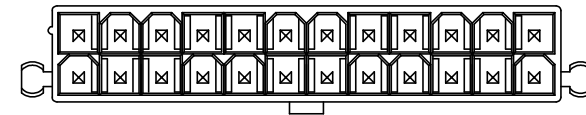
22 POS



8 POS



16 POS



24 POS

A

A

B

B

mat'l. code		surface	tolerance	projection	product family	
					MINITEK PWR4.2 HCC	
ltr	ecn no	dr	date	tolerances unless otherwise specified		title
				angles	X.X ±0.4	MINITEK PWR4.2 HIGH CURRENT CONNECTOR V/T DIP HEADER
				X'±1'	X.XX ±0.30	
				dr	KENNY TAI	2014-08-12
				enr	KENNY TAI	2014-08-12
				chr	KENNY TAI	2014-08-12
				appd	PM ZHENG	2014-08-29
sheet index		revision sheet	H	H	scale N.T.S.	
		1	2			dwg no
						sheet 2 of 2
						size
						A4
						type
						Product Customer Drawing