

PRODUCT PART NO.

10125202-001LF

NOTES :

1. MATERIAL:

A. HOUSING:

LCP MATERIAL, UL94V-0, COLOR: BLACK

B. SATA TERMINAL: COPPER ALLOY.

C. MOUNTING PIN: COPPER ALLOY.

2. FINISH:

A. SATA SIGNAL AND POWER PINS: (MATING SIDE)

1.27um [50u"] MINIMUM, 2.54um [100u"] MAXIMUM NICKEL UNDER PLATE WITH 0.05um [2u"] MINIMUM GOLD IN CONTACT AREA.

B. ALL SATA SOLDER TAILS AND MOUNTING PIN:

1.27um [50u"] MINIMUM, 2.54um [100u"] MAXIMUM NICKEL UNDER PLATE WITH 0.05um [2u"] MINIMUM GOLD IN CONTACT AREA.

C. LUBRICANT (C-9030) IS APPLIED ON THE CONTACT AREA AFTER PLATING.

3. DATUM [4] IS DEFINED AS THE TOP PORTION OF THE BLADE SURFACE.

4. PART MARKING: MANUFACTURE NAME, LOGO AND / OR DATE CODE SHALL BE MARKED ON THE SURFACE OF THE CONNECTOR APPROXIMATELY WHERE SHOWN.

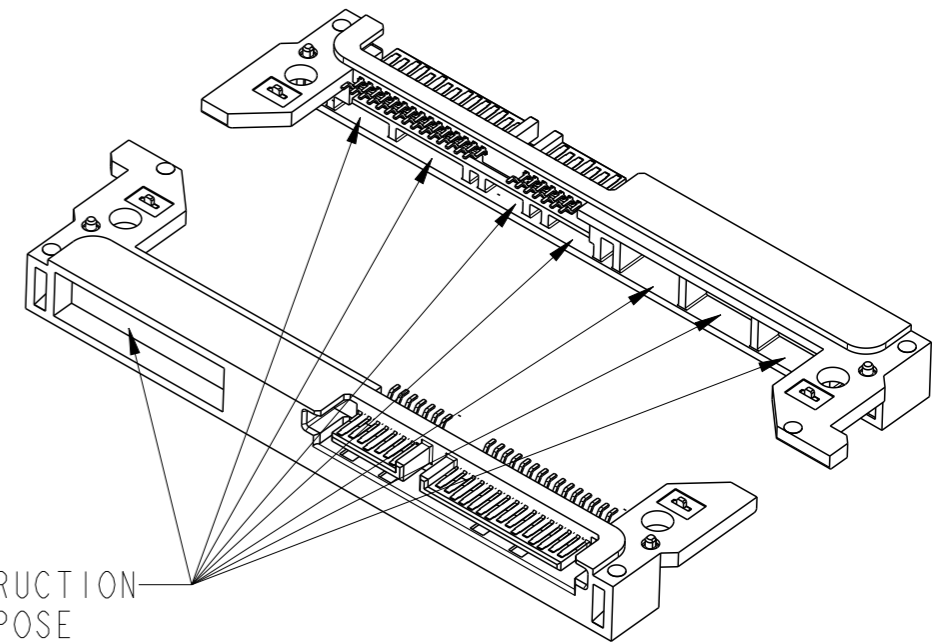
5. ASSEMBLY SHALL MEET ALL DIMENSIONS BEFORE EXPOSURE TO 260°C MAX. FOR 10 SECONDS AND SHALL MEET ALL SELECTED FUNCTIONAL DIMENSION AFTER EXPOSURE TO 260°C MAX. FOR 10 SECONDS.

6. THIS PRODUCT MEETS EUROPEAN UNION DIRECTIVES AND OTHER COUNTRY REGULATIONS AS DESCRIBED IN GS-47-0004.

7. A $\triangle A$ SYMBOL WILL BE NEXT TO ANY DIMENSION, NEW VIEW, OR NOTE WHICH HAS BEEN MODIFIED WITH THE CURRENT DRAWING REVISION.

8. UNLESS OTHERWISE SPECIFIED, TYPICAL WALL THICKNESS (1.0 mm).

9. INTERPRET DIMENSION ACCORDING TO ASME Y14.4M - 1994.



NON-FUNCTION CORE CONSTRUCTION FOR MOLDING PROCESS PURPOSE

spec ref -		dr	Vajith P-N	2014/12/29	projection	MM	size	A3	scale	3:1	
tolerance std		eng	Vajith P-N	2015/11/01		← →	ecn no		-		
ASME Y14.4M		chr	-	-			rel level		Released		
surface \checkmark		appr	Koon-Poh Tay	2015/11/01	product family			SATA COMBO PLUG		rev	A
linear					SATA COMBO PLUG			10125202		LATCH SMT (LONG)	
ASME Y14.4M											
cat. no.		-			Product - Customer Drw			sheet 1 of 8			



Copyright FCI.

1

2

3

4

A

B

C

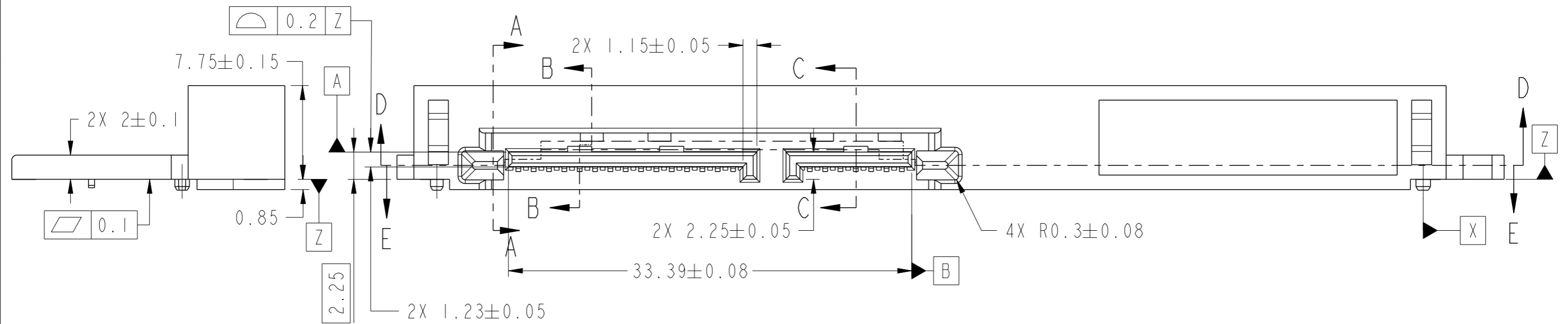
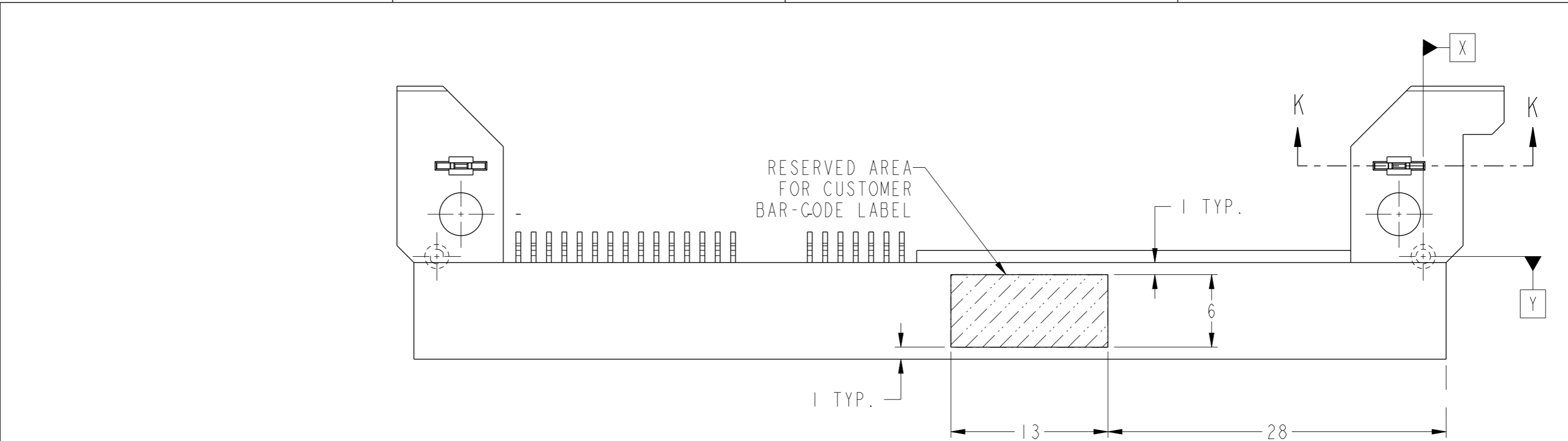
D

A

B

C

D



spec ref	-	dr	Vajith P-N	2014/12/29	projection	MM	size	A3	scale	3:1
tolerance std	ASME Y14.4M	eng	Vajith P-N	2015/11/01			ecn no	-	rel level	Released
TOLERANCES UNLESS OTHERWISE SPECIFIED		chr	-	-			product family	SATA COMBO PLUG		
surface	✓	appr	Koon-Poh Tay	2015/11/01				SATA COMBO PLUG		10125202
linear	±0.2	www.fci.com		cat. no.	-	Product - Customer Drw	sheet 2 of 8	rev	A	
angular	0° ±3°									



Copyright FCI.

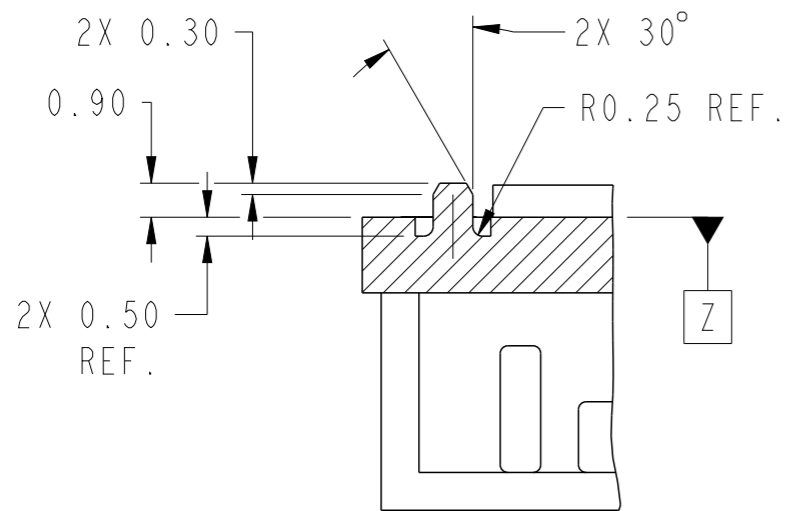
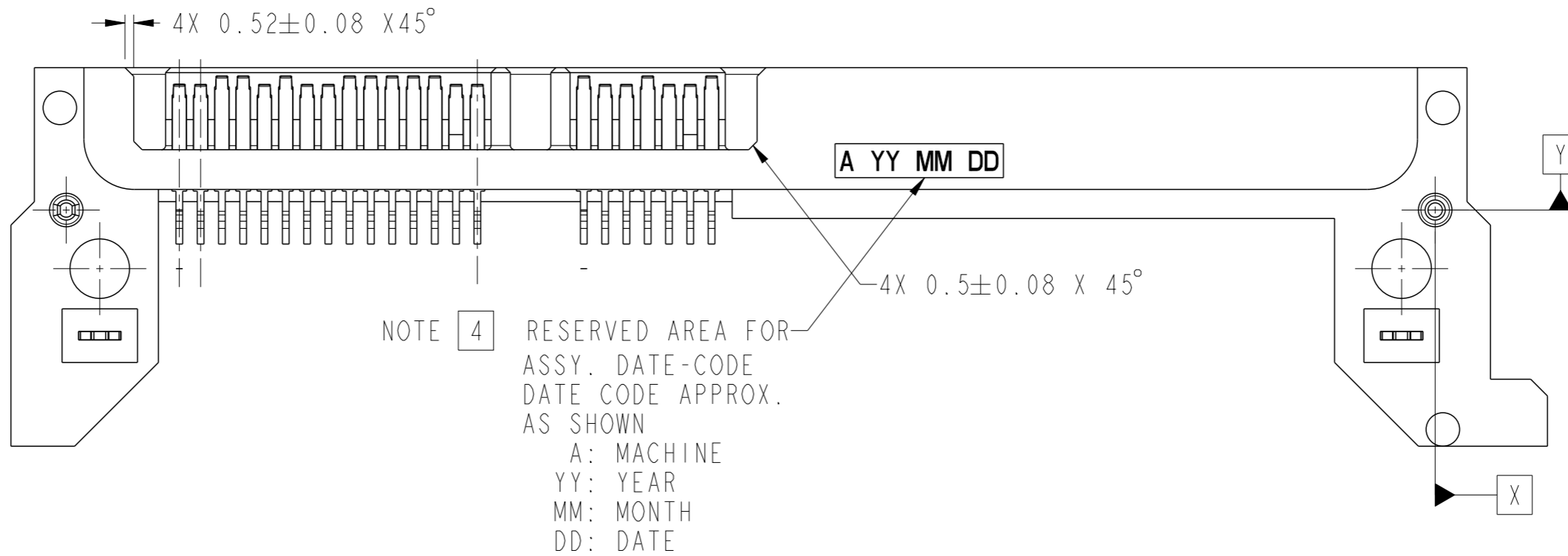
2

3

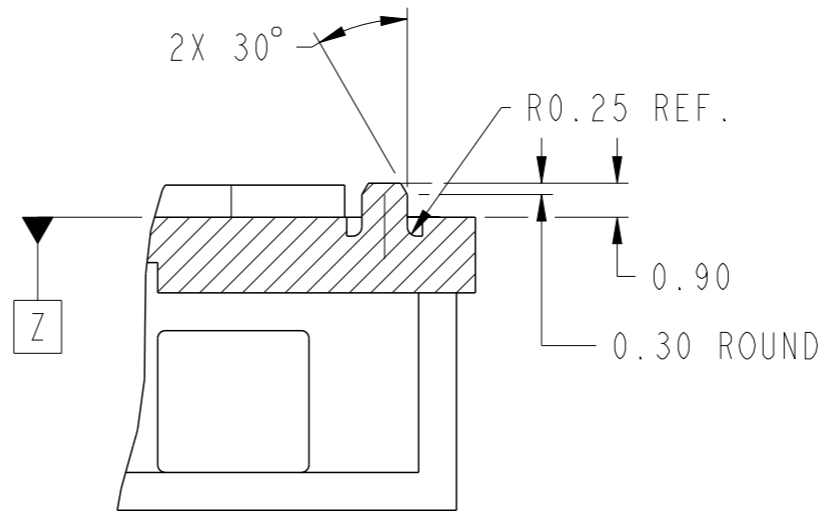
PDS: Rev :A

STATUS:Released

Printed: Nov 02, 2015



SECTION G-G
SCALE 5:1

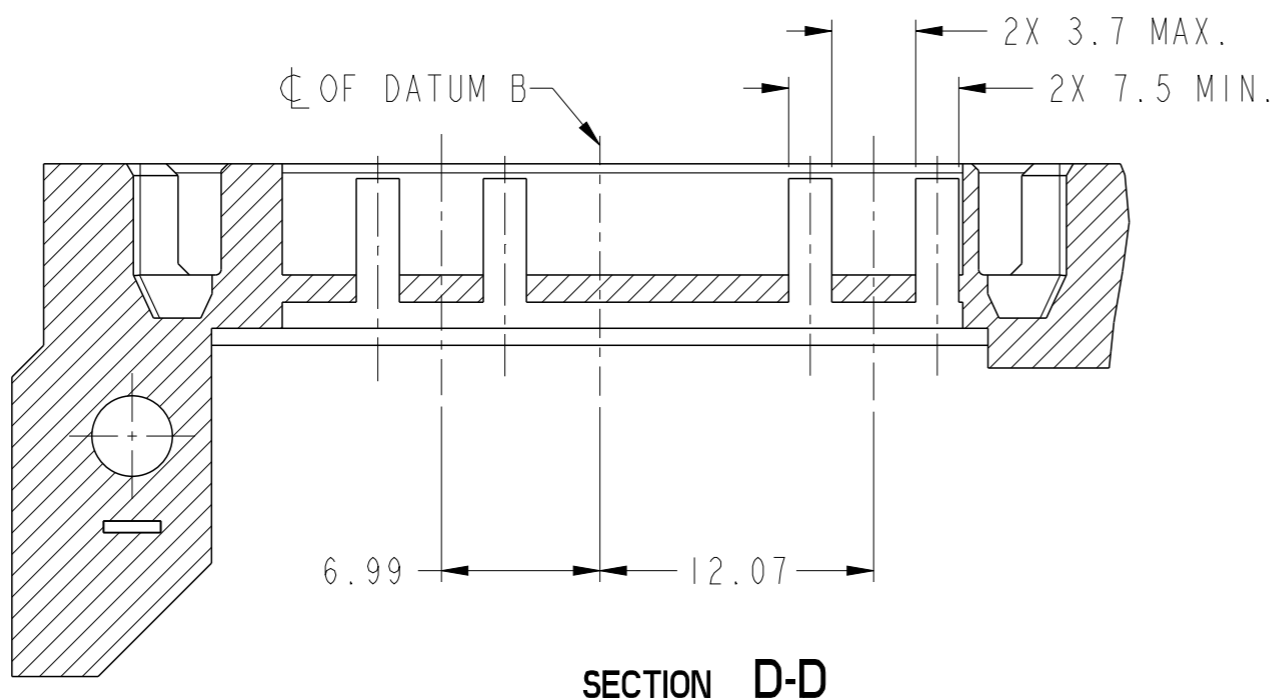


SECTION F-F
SCALE 5:1

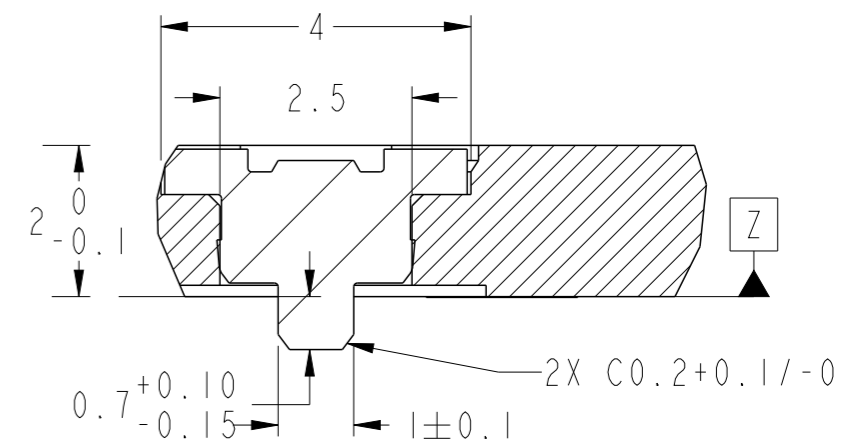


Copyright FCI.

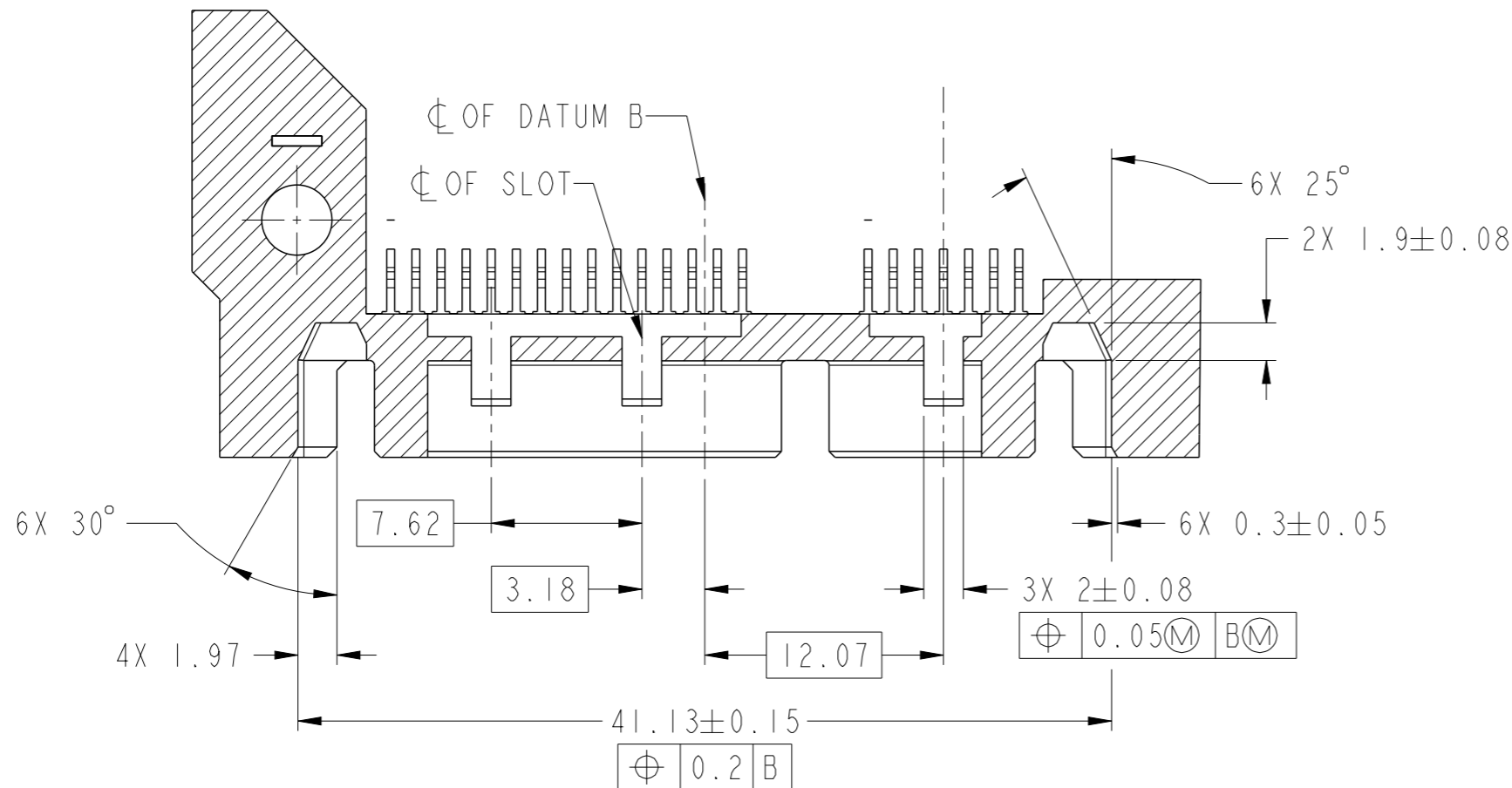
spec ref	-	dr	Vajith P-N	2014/12/29	projection	MM	size	A3	scale	3:1
tolerance std	ASME Y14.4M	eng	Vajith P-N	2015/11/01			ecn no	-	rel level	Released
TOLERANCES UNLESS OTHERWISE SPECIFIED		chr	-	-			product family	SATA COMBO PLUG		
surface	✓	appr	Koon-Poh Tay	2015/11/01			dwg no	10125202	rev	A
ASME Y14.4M	linear	angular	0°	±3°	www.fci.com	cat. no.	-	Product - Customer Drw	sheet 4 of 8	



SECTION D-D



SECTION K-K
SCALE 10:1

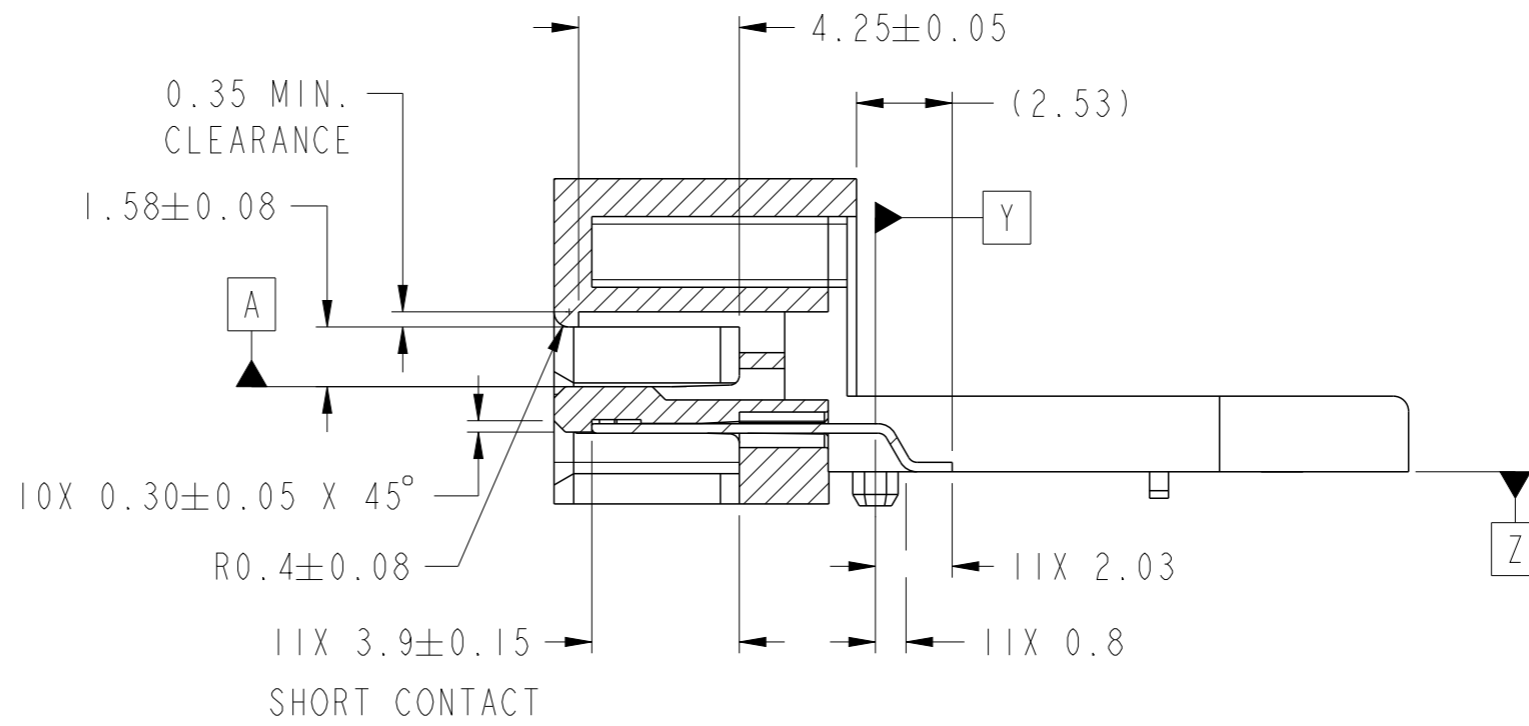


SECTION E-E

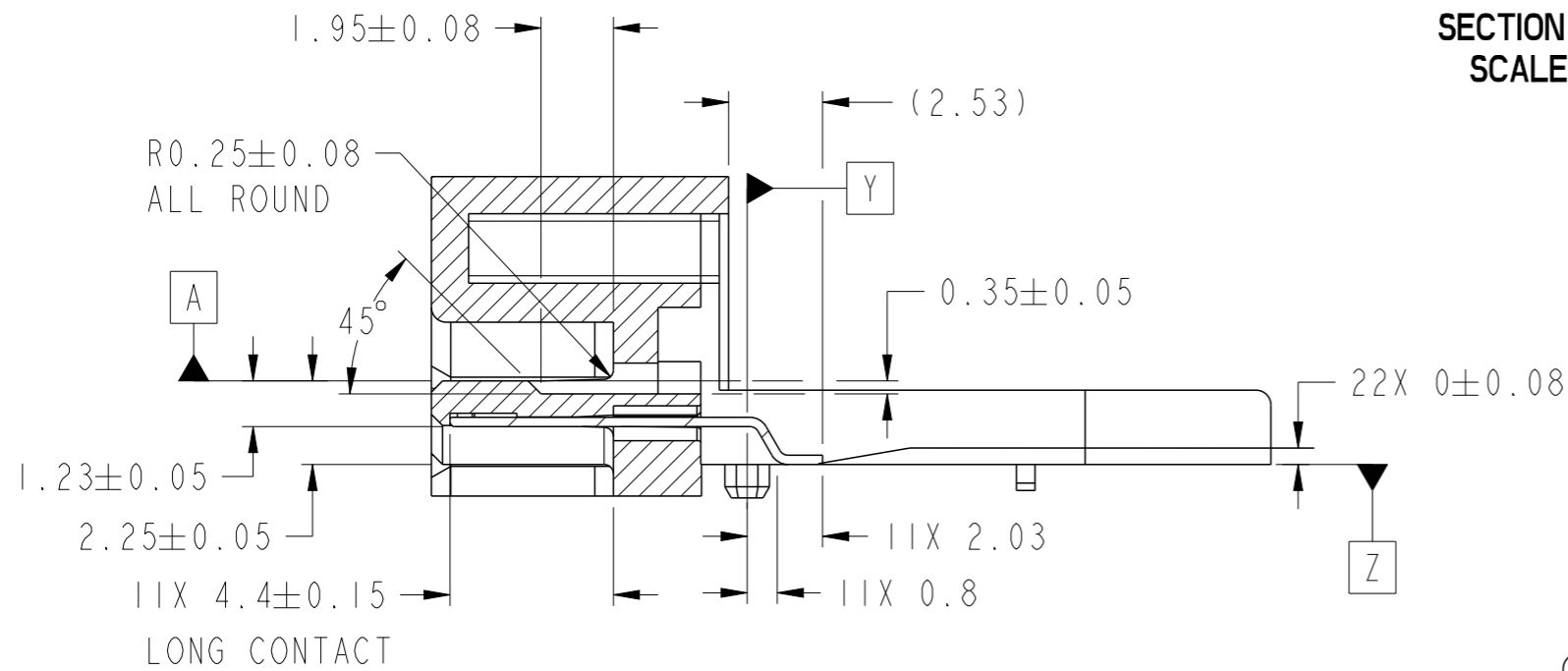
spec ref	-	dr	Vajith P-N	2014/12/29	projection	MM	size	A3	scale	3:1
tolerance std	ASME Y14.4M	eng	Vajith P-N	2015/11/01			ecn no	-	rel level	Released
TOLERANCES UNLESS OTHERWISE SPECIFIED		chr	-	-			product family	SATA COMBO PLUG	rel level	Released
surface	✓	appr	Koon-Poh Tay	2015/11/01			dwg no	10125202	rev	A
ASME Y14.4M	linear				SATA COMBO PLUG LATCH SMT (LONG)		cat. no. -	Product - Customer Drw	sheet 5 of 8	
ASME Y14.4M	angular	0°	±3°	www.fci.com	PDS: Rev :A		STATUS:Released		Printed: Nov 02, 2015	



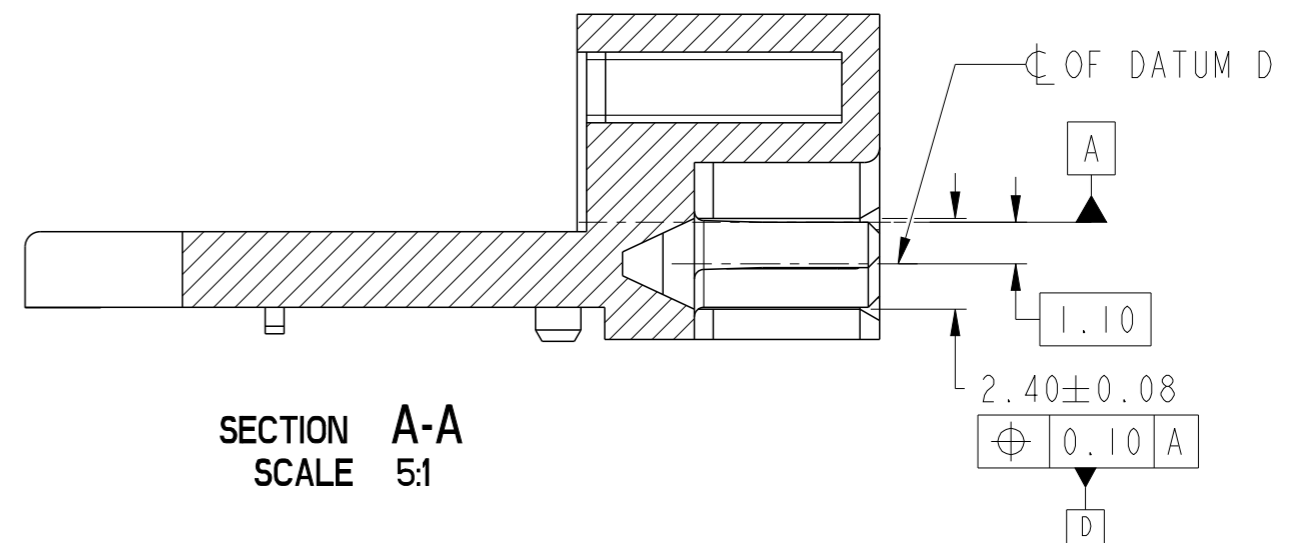
Copyright FCI.



SECTION B-B
SCALE 5:1

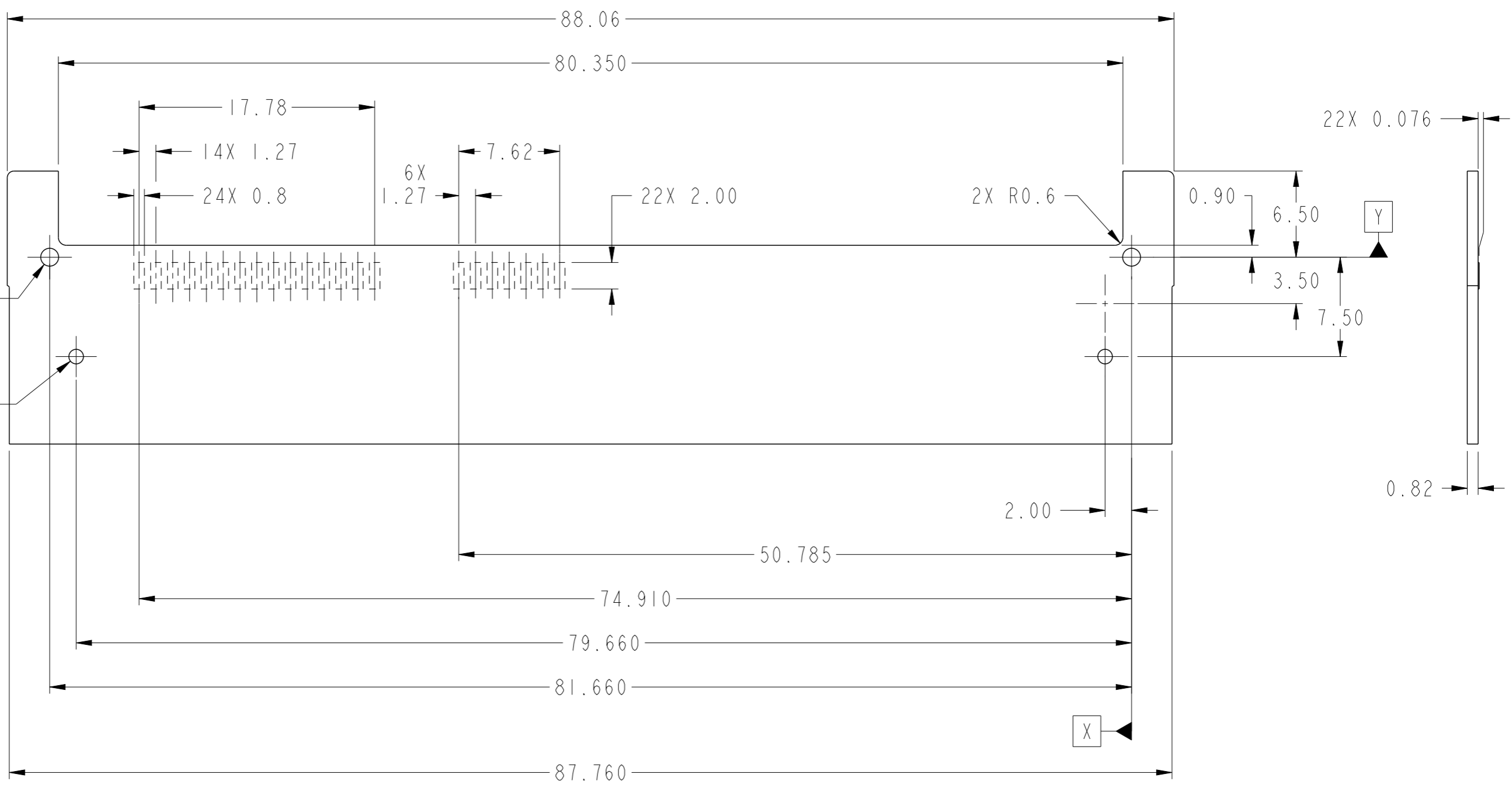


SECTION C-C
SCALE 5:1



SECTION A-A
SCALE 5:1

spec ref	-	dr	Vajith P-N	2014/12/29	projection	MM	size	A3	scale	3:1
tolerance std	ASME Y14.4M	eng	Vajith P-N	2015/11/01			ecn no	-	rel level	Released
TOLERANCES UNLESS OTHERWISE SPECIFIED		chr	-	apppr			Koon-Poh Tay	2015/11/01	product family	SATA COMBO PLUG
surface	✓	linear	----	±0.2		SATA COMBO PLUG LATCH SMT (LONG)	dwg no	10125202	rev	A
ASME Y14.4M	angular	0°	±3°	www.fci.com			cat. no.	-	Product - Customer Drw	sheet 6 of 8



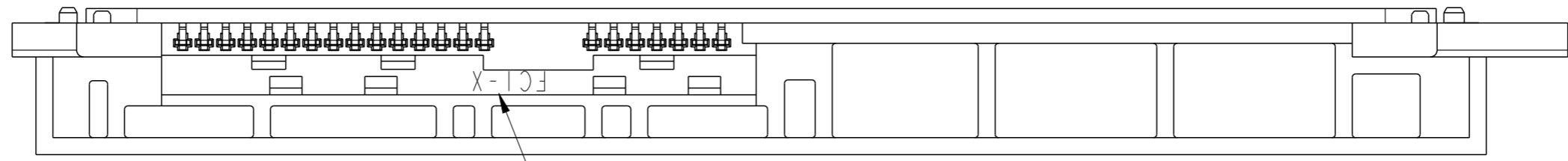
PCB THICKNESS 0.82mm ±0.05mm
ALL PAD THICKNESS 0.0762mm



Copyright FCI.

spec ref	-	dr	Vajith P-N	2014/12/29	projection	MM	size	A3	scale	1:1									
tolerance std	ASME Y14.4M	eng	Vajith P-N	2015/11/01			ecn no	-	rel level	Released									
TOLERANCES UNLESS OTHERWISE SPECIFIED		chr	-	-			product family	SATA COMBO PLUG											
surface	✓	appr	Koon-Poh Tay	2015/11/01			dwg no	10125202	rev	A									
ASME Y14.4M	linear	<table border="1"> <tr><td>----</td><td>±0.2</td></tr> <tr><td>----</td><td>±----</td></tr> <tr><td>----</td><td>±----</td></tr> </table>		----	±0.2	----	±----	----	±----	SATA COMBO PLUG		<table border="1"> <tr><td>www.fci.com</td><td>cat. no.</td><td>-</td></tr> </table>		www.fci.com	cat. no.	-	Product - Customer Drw		sheet 7 of 8
----	±0.2																		
----	±----																		
----	±----																		
www.fci.com	cat. no.	-																	
ASME Y14.4M	angular	<table border="1"> <tr><td>0°</td><td>±3°</td></tr> </table>		0°	±3°	LATCH SMT (LONG)		STATUS:Released		Printed: Nov 02, 2015									
0°	±3°																		

A



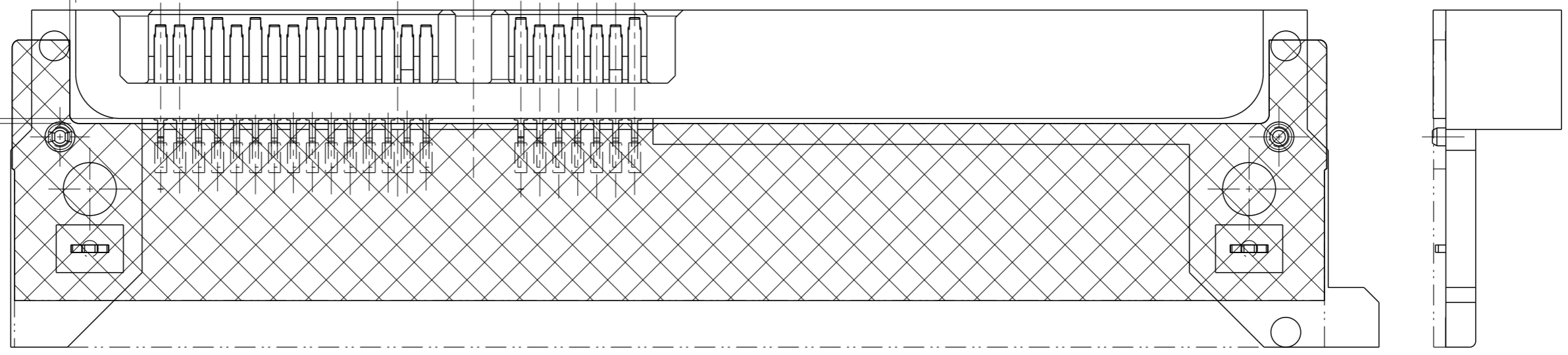
NOTE 4: FCI LOGO & CAVITY "X" RUNNING NUMBER
("X" = A, B, C, D, E, F, G, H, J, K, L, M, N, P, Q, R)

B

2X 0.40 REF.

PC-BOARD AT TOP

0.33 REF.



C



Copyright FCI.

D

spec ref	-	dr	Vajith P-N	2014/12/29	projection	MM	size	A3	scale	3:1
tolerance std	ASME Y14.4M	eng	Vajith P-N	2015/11/01			ecn no	-	rel level	Released
TOLERANCES UNLESS OTHERWISE SPECIFIED		chr	-	-			product family	SATA COMBO PLUG		
surface	✓	appr	Koon-Poh Tay	2015/11/01			dwg no	10125202	rev	A
ASME Y14.4M	linear	www.fci.com		cat. no.	-	Product - Customer Drw	sheet 8 of 8			
	angular	0°	±3°							