



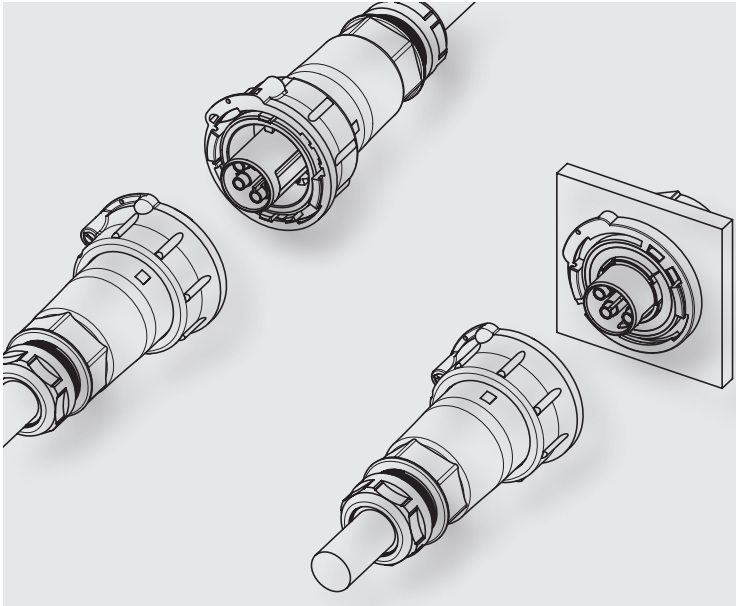
**RST<sup>®</sup>POWER**

Connector for more power  
with highest IP rating (IP6X)



## The new **RST**<sup>®</sup> POWER series up to 50 A

### Application example




### General

The new **RST**<sup>®</sup> POWER series is particularly designed for device engineering. With a current-carrying capability of 50 A combined with an extremely compact design, the connector fits almost everywhere.

The 4-pole connector is based on the 5-pole variation, with one pole left empty.

### Coding

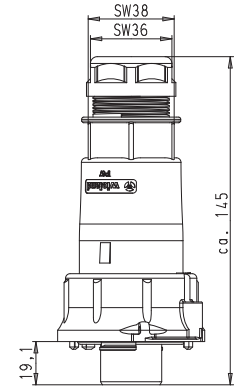
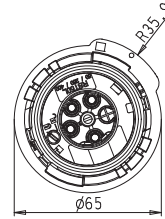
For daily updates visit the website at <a href="http://eshop.wieland-electric.com">http://eshop.wieland-electric.com</a> . Assembly instructions and other technical information can be found in the Technical Data or in eShop.				<b>Application</b>	Power max. 50 A
				<b>Mechanical coding</b>	250/400 V 1, 2, 3 ⊕ 
<b>Name</b>	<b>Description</b>	<b>Connection style</b>	<b>Strain relief housing</b>	<b>Connection points per pole</b>	black
<b>Connectors</b>	1 x wire entry	Screw Crimp	yes	1	✓
<b>Device connectors</b>	M32 connector, standard	Screw Crimp	yes	1	✓

# Connectors, straight for cables Ø 4 – 6 mm and 4 – 10 mm

## Female connector



Illustration  
M 32 cable gland



### with screw connection

Wire	mm <sup>2</sup>
solid	from 4.0 to 6.0*
stranded	
flexible wires	from 4.0 to 16.0
Approvals	VDE, c CSA us

### with crimp connection

Wire	mm <sup>2</sup>
flexible wires	from 4.0 to 10.0
Approvals	VDE, c CSA us

Application	Coding	Cable gland	Cable Ø in mm	Color
Power max. 50A		M 32	15 – 25	black
		M 40	20 – 32	black

Part No.
97.041.4053.1
97.041.4253.1

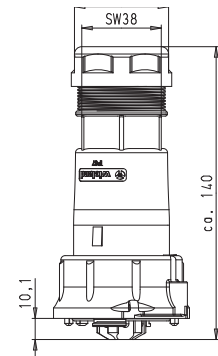
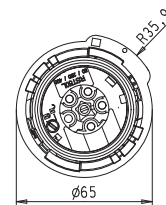
Part No.
97.141.0053.1
97.141.0253.1

Contacts separately under Accessories, see following pages.

## Male connector



Illustration  
M 40 cable gland



### with screw connection

Wire	mm <sup>2</sup>
solid	from 4.0 to 6.0*
stranded	
flexible wires	from 4.0 to 16.0
Approvals	VDE, c CSA us

### with crimp connection

Wire	mm <sup>2</sup>
flexible wires	from 4.0 to 10.0
Approvals	VDE, c CSA us

Application	Coding	Cable gland	Cable Ø in mm	Color
Power max. 50A		M 32	15 – 25	black
		M 40	20 – 32	black

Part No.
97.042.4053.1
97.042.4253.1

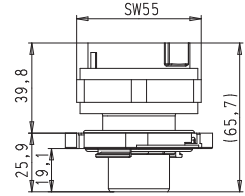
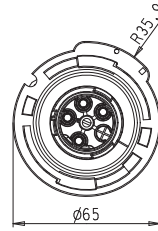
Part No.
97.142.0053.1
97.142.0253.1

Contacts separately under Accessories, see following pages.

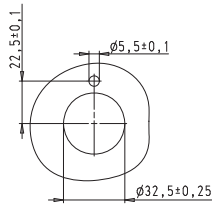
\* Solid and stranded wires > 6.0 mm<sup>2</sup> cannot be connected in the available space due to their rigidity.

# M32 device connector straight, standard

## Female connector



Drilling template for device connectors fixed in position



### with screw connection

Wire	mm <sup>2</sup>
solid	from 4.0 to 16.0
stranded	from 4.0 to 16.0
flexible wires	from 4.0 to 16.0
Approvals	VDE, c CSA us

### with crimp connection

Wire	mm <sup>2</sup>
flexible wires	from 4.0 to 10.0
Approvals	VDE, c CSA us

Application Coding Fixation with bolts Color

Power max. 50A		fixed in position	black
		not fixed in position	black

Part No.

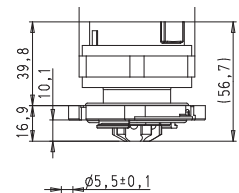
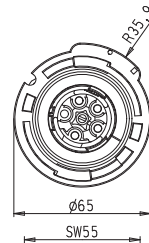
97.041.5553.1
97.041.5053.1

Part No.

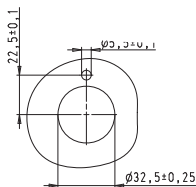
97.141.1553.1
97.141.1053.1

Contacts separately under Accessories, see following pages.

## Male connector



Drilling template for device connectors fixed in position



### with screw connection

Wire	mm <sup>2</sup>
solid	from 4.0 to 16.0
stranded	from 4.0 to 16.0
flexible wires	from 4.0 to 16.0
Approvals	VDE, c CSA us

### with crimp connection

Wire	mm <sup>2</sup>
flexible wires	from 4.0 to 10.0
Approvals	VDE, c CSA us

Application Coding Fixation with bolts Color

Power max. 50A		fixed in position	black
		not fixed in position	black

Part No.

97.042.5553.1
97.042.5053.1

Part No.

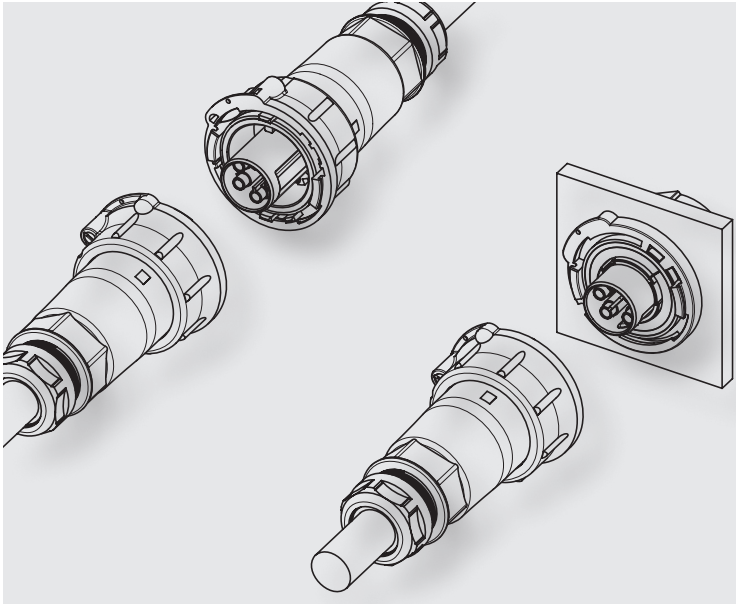
97.142.1553.1
97.142.1053.1

Contacts separately under Accessories, see following pages.



## The new **RST**® POWER series up to 50 A


### Application example



### General

The new **RST**® POWER series is particularly designed for device engineering. With a current-carrying capability of 50A combined with an extremely compact design, the connector fits almost everywhere.

### Coding

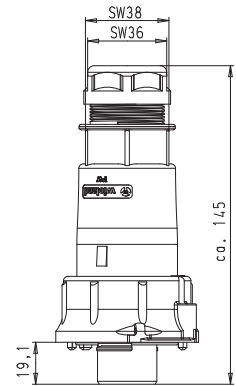
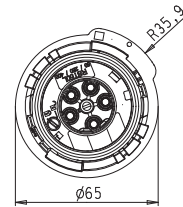
For daily updates visit the website at <a href="http://eshop.wieland-electric.com">http://eshop.wieland-electric.com</a> . Assembly instructions and other technical information can be found in the Technical Data or in eShop.				<b>Application</b>	Power max. 50A
				<b>Mechanical coding</b>	250/400V 1, 2, 3, N, ⊕ 
<b>Name</b>	<b>Description</b>	<b>Connection style</b>	<b>Strain relief housing</b>	<b>Connection points per pole</b>	black
<b>Connectors</b>	1 x wire entry	Screw Crimp	yes	1	✓
<b>Device connectors</b>	M32 connector, standard	Screw Crimp	yes	1	✓

# Connectors, straight for cables Ø 4 – 6 mm and 4 – 10 mm

## Female connector



Illustration  
M 32 cable gland



### with screw connection

Wire	mm <sup>2</sup>
solid	from 4.0 to 6.0*
stranded	
flexible wires	from 4.0 to 16.0
Approvals	VDE, c CSA us

### with crimp connection

Wire	mm <sup>2</sup>
flexible wires	from 4.0 to 10.0
Approvals	VDE, c CSA us

Application Coding Cable gland Cable Ø in mm Color

Power max. 50A		M32	15 – 25	black
		M40	20 – 32	black

Part No.

97.051.4053.1  
97.051.4253.1

Part No.

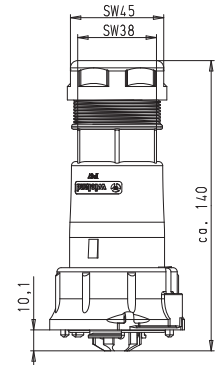
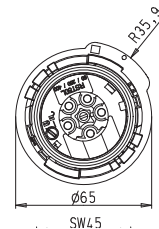
97.151.0053.1  
97.151.0253.1

Contacts separately under Accessories, see following pages.

## Male connector



Illustration  
M 40 cable gland



### with screw connection

Wire	mm <sup>2</sup>
solid	from 4.0 to 6.0*
stranded	
flexible wires	from 4.0 to 16.0
Approvals	VDE, c CSA us

### with crimp connection

Wire	mm <sup>2</sup>
flexible wires	from 4.0 to 10.0
Approvals	VDE, c CSA us

Application Coding Cable gland Cable Ø in mm Color

Power max. 50A		M32	15 – 25	black
		M40	20 – 32	black

Part No.

97.052.4053.1  
97.052.4253.1

Part No.

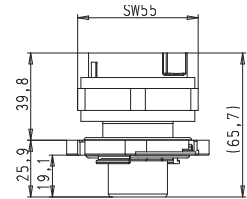
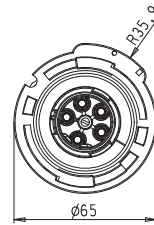
97.152.0053.1  
97.152.0253.1

Contacts separately under Accessories, see following pages.

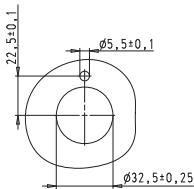
\* Solid and stranded wires > 6.0 mm<sup>2</sup> cannot be connected in the available space due to their rigidity.

# M32 device connector straight, standard

## Female connector



Drilling template for device connectors fixed in position



### with screw connection

Wire	mm <sup>2</sup>
solid	from 4.0 to 16.0
stranded	
flexible wires	from 4.0 to 16.0
Approvals	VDE, c CSA us

### with crimp connection

Wire	mm <sup>2</sup>
flexible wires	from 4.0 to 10.0
Approvals	VDE, c CSA us

Application Coding Fixation with bolts Color

Power max. 50A

N, 1, 2, 3

fixed in position  
not fixed in position

black  
black

Part No.

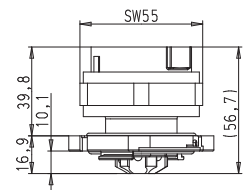
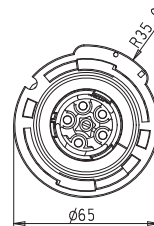
97.051.5553.1  
97.051.5053.1

Part No.

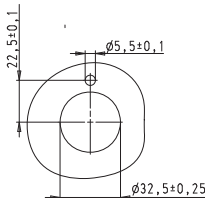
97.151.1553.1  
97.151.1053.1

Contacts separately under Accessories, see following pages.

## Male connector



Drilling template for device connectors fixed in position



### with screw connection

Wire	mm <sup>2</sup>
solid	from 4.0 to 16.0
stranded	
flexible wires	from 4.0 to 16.0
Approvals	VDE, c CSA us

### with crimp connection

Wire	mm <sup>2</sup>
flexible wires	from 4.0 to 10.0
Approvals	VDE, c CSA us

Application Coding Fixation with bolts Color

Power max. 50A

N, 1, 2, 3

fixed in position  
not fixed in position

black  
black

Part No.

97.052.5553.1  
97.052.5053.1

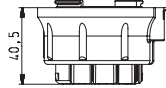
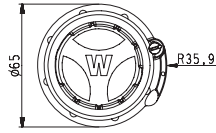
Part No.

97.152.1553.1  
97.152.1053.1

Contacts separately under Accessories, see following pages.

## Cover

For safe covering of unused male or female components



Name	Color	Part No.
<b>Cover</b>	black	Z5.567.5653.0

## Sample kit RST 50i5

Complete kit

Contents:

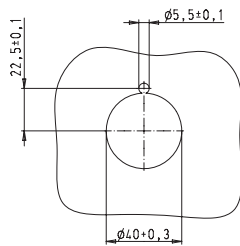
- Connectors
- Device connection
- Cover
- Knock-out (metal sheet)



Name	Color	Part No.
<b>Sample kit RST50i5</b>	black	99.628.0000.0

## Adapter ring 40 mm

For fixing the device connector inside 40 mm knock-outs



Name	Color	Part No.
<b>Adapter ring</b>	black	05.568.1853.0

**RST® POWER Crimp contacts****Female contact****Male contact**

Name	Marking	(groove) mm <sup>2</sup>	Part No.
<b>Female contact</b>	None	4.0	02.126.0621.8
<b>Female contact</b>	1	6.0	02.126.0721.8
<b>Female contact</b>	None	10.0	02.126.0821.8
<b>Male contact</b>	None	4.0	05.545.2821.8
<b>Male contact</b>	1	6.0	05.545.2921.8
<b>Male contact</b>	None	10.0	05.545.3021.8

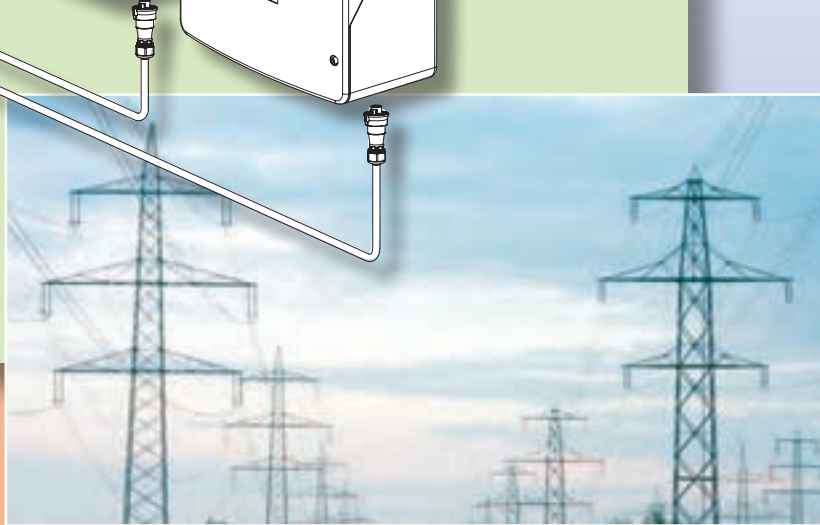
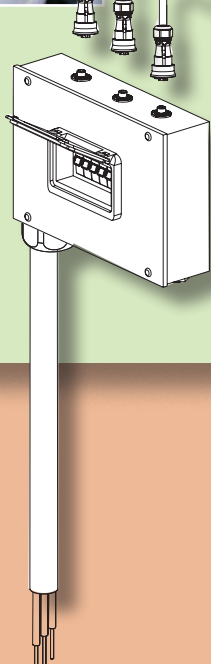
**Crimping tool with system kit**

Name	Part No.
<b>Crimping tool</b> (supplied in case)	95.101.0800.0
<b>Crimping die D</b>	05.502.2300.0

# Convincing technology



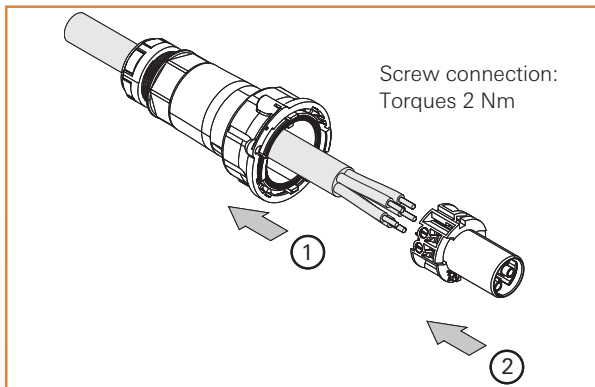
Example:  
Solar collective  
distribution box



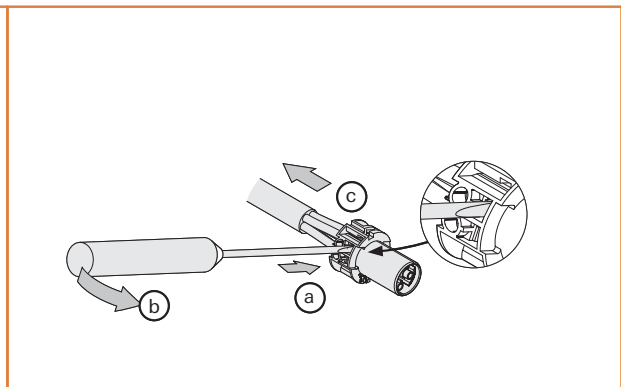


# Connectors 4- and 5-pole

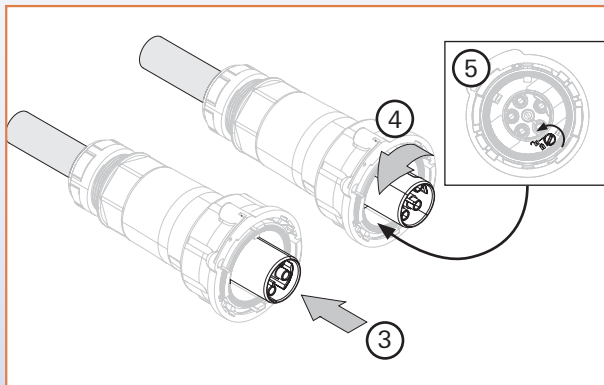
Connect the wires ...



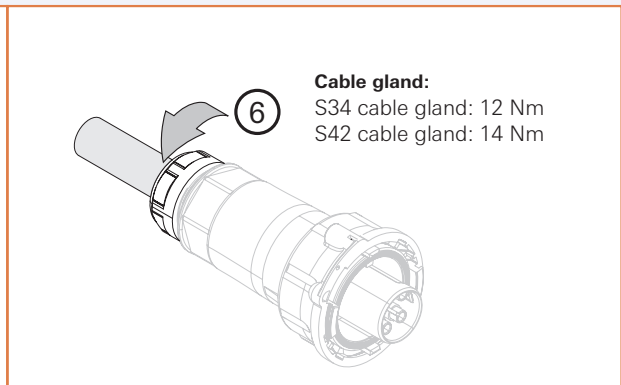
... Disconnect the crimp contacts



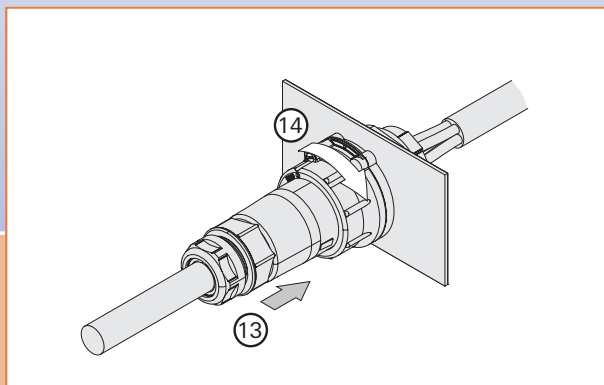
Secure the contact inserts ...



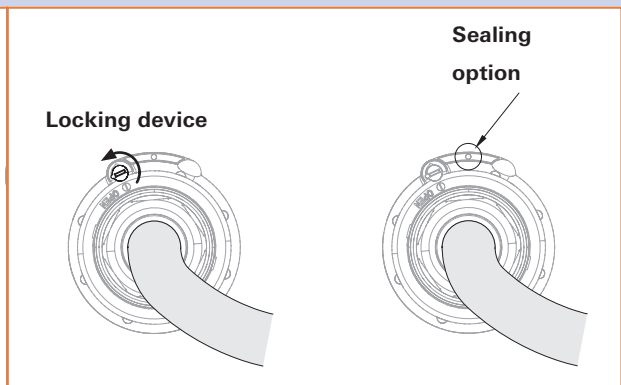
... Tighten the cable gland



Bayonet lock ...

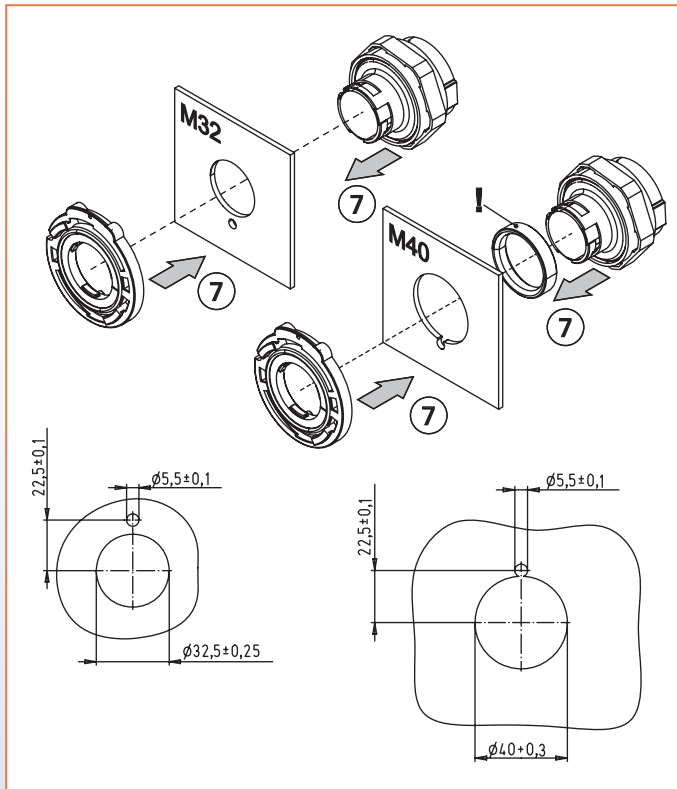


... and protection against unintentional disconnection

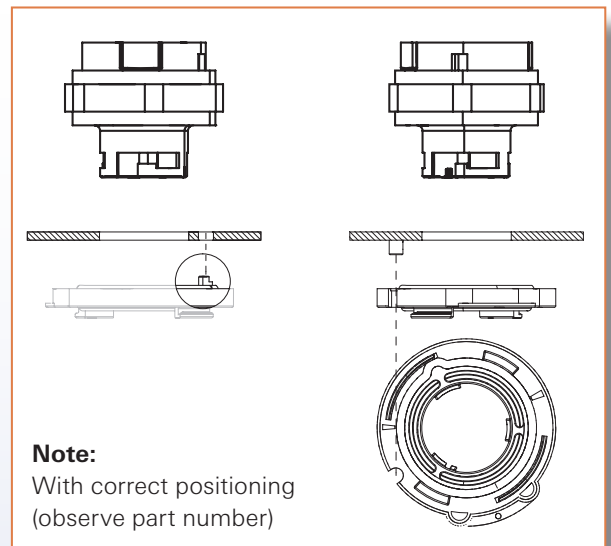


# Device connections 4- and 5-pole

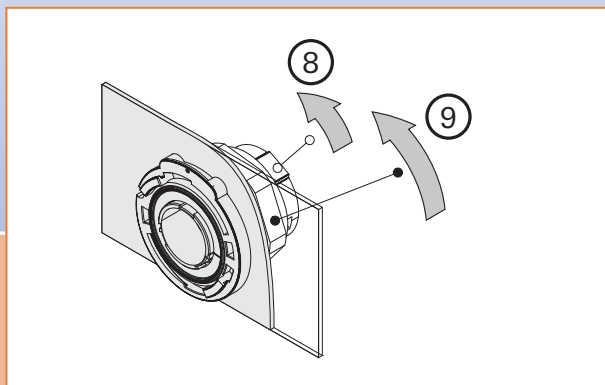
Mounting housing flange, dimensions in mm



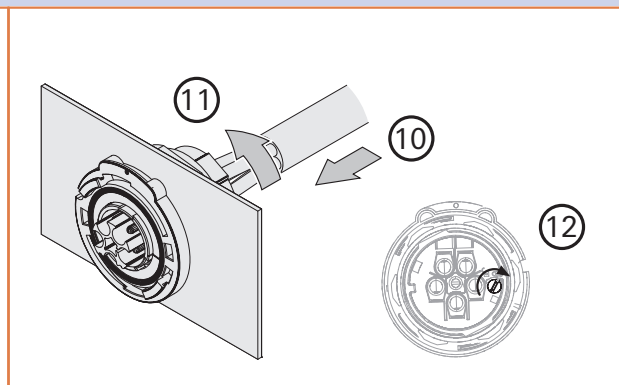
Positioning option



Latching the housing flange ...



... securing the contact insert



# Definition of IP protection degrees (DIN EN 60529-1)

Documentation:

Example: IP65



	Protection against contact	Protection against ingress of objects
0	no protection	no protection
1	Any large surface of the body (e.g. back of the hand)	Large foreign objects (> 50 mm in Ø)
2	Finger	Medium-sized foreign objects (> 12 mm in Ø)
3	Tools and wires (> 2.5 mm in Ø)	Small foreign objects (> 2.5 mm in Ø)
4	Tools and wires (> 1.0 mm in Ø)	Grain-shaped foreign objects (> 12 mm in Ø)
5	Complete protection against contact	Dust deposition
6	Complete protection against contact	Dust ingress
7		
8		
9		

0	no protection
1	Protection against vertically falling water
2	Protection from diagonally (up to 15°) falling water drops
3	Protection against spraying water up to 60° to the vertical
4	Protection from splashing water from any direction
5	Protection against water jets
6	Protected against powerful water jets
7	Protection against temporary immersion in water
8	Protection against continuous immersion in water
9	Protection against high pressure, high temperature spray downs

## As an innovative installation system, Wieland offers a global concept for efficient outdoor installation and industrial application.

In many applications, electrotechnical devices and systems must reliably work for many years under tough environmental conditions. To ensure a reliable function, it is essential to prevent the penetration of humidity or particles (e.g. dust, oil, soot, etc.) in production plants, garages or in outdoor areas. Even an unplanned immersion is possible with the **RST**® system within the scope of the specified degree of protection.

**The system is not designed for permanent operation under water.**

**It is not possible to lay the components directly in the ground.**

**According to VDE 0100-520, connectors must be protected using suitable additional facilities and must be accessible for visual inspection, testing, and maintenance.**

**Refer also to the installation instructions.**

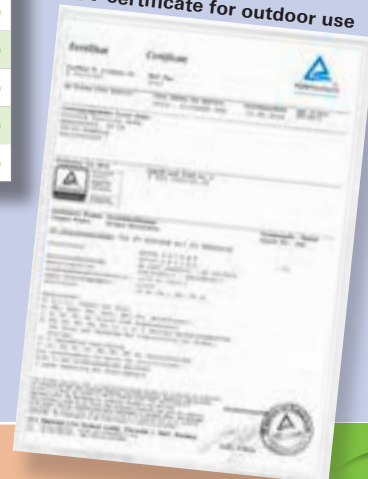
### Degree of protection achieved:

- IP65** Water jets
- IP66** Powerful water jets
- IP67** Temporary immersion
- IP68** Continuous immersion (for 2 hours at a water depth of 3 m)
- IP69** High-pressure spray down

# Material resistance

Please contact us for applications under different conditions.			
UV light (use black-colored connectors!)	+	Motor oil (SAE 20W/55)	+
Oil and grease resistance	+	Nickel chloride	+
Aliphatic carbon hydride	+	Paraffin and paraffin derivates	+
Aromatic hydrocarbons	+	Phosphoric ester	+
Alcohols	+	Phthalic ester	+
Ammonia, water-free	+	Polyamide resin	+
Ammonium chloride (salmiac)	+	Polyester polyoles	+
Ammonium sulfate	+	Polyether polyoles	+
Barium chloride	+	Polyglycols	+
Beer	+	Polymeric softeners	+
Butter	+	Polyurethane resins	+
Butyl alcohol	+	Mercury	+
Calcium chloride, aqueous solution, 10%	+	Castor oil	+
Citric acid, aqueous solution, 10%	+	Salmiac	+
Ferric sulfide	+	Oxygen, RT	+
Ethyl ether	+	Lubricating oil (O-149), (not bunker oil, oil tankers)	+
Paint, varnish, with low sulphuric acid content	+	Sulfur, wet	+
Fruit juice, fruit acid	+	Sulfuric acid (diluted, RT)	+
Tannic acid	+	Sulfur hexafluoride	+
Glycerin	+	Sweat	+
Glystantine, aqueous solution, 40%	+	Sebacic acid ester	+
Potassium chloride	+	Spirits	+
Caustic potash solution, aqueous solution, 10%	+	Nitric acid (10%)	+
Sodium, aqueous solution, 10%	+	Hydrochloric acid (10%)	+
Linseed oil	+	Water, RT, free from chlorine up to 80 °C	+
Milk	+	Water: sea water resistance, artificial, 20 °C	+
Lactic acid, 20 °C	+	Stannic chloride, 20 °C, saturated	+

TÜV certificate for outdoor use



## RST® long-term studies:

In addition to the tests required by the standard, a continuous test was performed over 14 months. During this time, the connectors were exposed to direct sunlight, frost and occasional flooding. For this purpose, the **RST®** components were installed in an eaves gutter and monitored by a 30 mA circuit breaker with the mains voltage applied. The following tests were performed in addition to the continuous test:

– Temperature change test (– 40 °C to + 60 °C)

Please observe overleaf installation instructions.

The complete test report can be ordered from our hotline using the phone number +49 951/9324-996.



Headquarters:  
Wieland Electric GmbH  
Brennerstraße 10 – 14  
96052 Bamberg, Germany

Phone +49 951 9324-0  
Fax +49 951 9324-198  
info@wieland-electric.com  
www.wieland-electric.com

## Industrial technology

### Solutions for the control cabinet

- DIN rail terminal blocks
  - Screw, tension spring or push-in connection technology
  - Wire cross sections up to 300 mm<sup>2</sup>
  - Numerous special functions
  - Software solutions interfacing to CAE systems
- Safety
  - Safe signal acquisition
  - Safety switching devices
  - Modular safety modules
  - Compact safety controllers
  - Application consulting and training
- Network engineering and fieldbus systems
  - Remote maintenance via VPN industrial router and VPN service portal
  - Industrial Ethernet switches
  - PLC and I/O systems, standard and increased environmental conditions
- Interface
  - Power supply units
  - Overvoltage protection
  - Coupling relays, semiconductor switches
  - Timer relays, measuring and monitoring relays
  - Analog coupling and converter modules
  - Passive interfaces

### Solutions for field applications

- Decentralized installation and automation technology
  - Electrical installation for wind tower
  - Fieldbus interfaces and motor starters
- Connectors for industrial applications
  - Rectangular and round connectors
  - Aluminium or plastic housings
  - Degree of protection up to IP 69
  - Current-carrying capacity up to 100 A
  - Connectors for hazardous areas
  - Modular, application-specific technology

### PC board terminals and connectors

- Screw or spring clamp connection technology
- Spacings: 3.5 mm to 10.16 mm
- Reflow or wave soldering process

## Building and installation technology

- Building installation systems
  - Main power supply connectors IP 20/IP 65 ... IP 69
  - Bus connectors
  - Low-voltage connectors
  - Power distribution system with flat cables
  - Distribution systems
  - Room automation with KNX, EnOcean, SMI and DALI
  - DIN rail terminal blocks for electrical installations
  - Overvoltage protection

**contacts  
are  
green.**