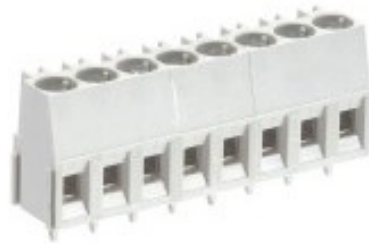


## Datasheet

Item No. 25.162.3253.0

Printed circuit board terminal 8291 / 2 Z

PCB Terminal Block, 2-pole, with marking, and insulation plate, without location cam, pitch 5,08, series: 8281/2 Z



Item No.	25.162.3253.0
EAN	4015573176263
order unit	100 Piece(s)

### Approvals



### Technical data

#### General

Modular spacing	5.08 mm
Connection type	Screw connection
Soldering process	Wave soldering
Number of poles	2
Conductor to circuit board	180°
Number of levels	1
Integrated test socket	Yes
Insulation plate	Yes
Retaining pins	No
Marking	No

#### Technical data

Nominal cross section	2.5 mm <sup>2</sup>
Rated current	16 A
Overvoltage Category I	1000 V
Overvoltage Category II	690 V
Overvoltage Category III	250 V
Rated impulse voltage	4 kV

#### Connection Data

Wire strip length	6.5 mm
Minimum cross section solid	0.14 mm <sup>2</sup>
Maximum cross section solid	4 mm <sup>2</sup>
Minimum cross section fine stranded	0.14 mm <sup>2</sup>
Maximum cross section fine stranded	2.5 mm <sup>2</sup>

**Technical Data UL/CSA**

Cross section UL	22-12 AWG
Voltage UL	300
Current field wiring	20 A
Current factory wiring	30 A
Cross section CSA	22-12 AWG
Voltage CSA	300 V
Current CSA	25 A

**Other**

Type of insulation material	Thermoplastic
Colour	Grey
Height	15 mm
Length	11.01 mm
Depth	9.5 mm
Material attachment screw	Steel
Material contact base	E-Cu
Material contact surface	Sn
Tightening torque note	If soldered additional mechanical fixing necessary