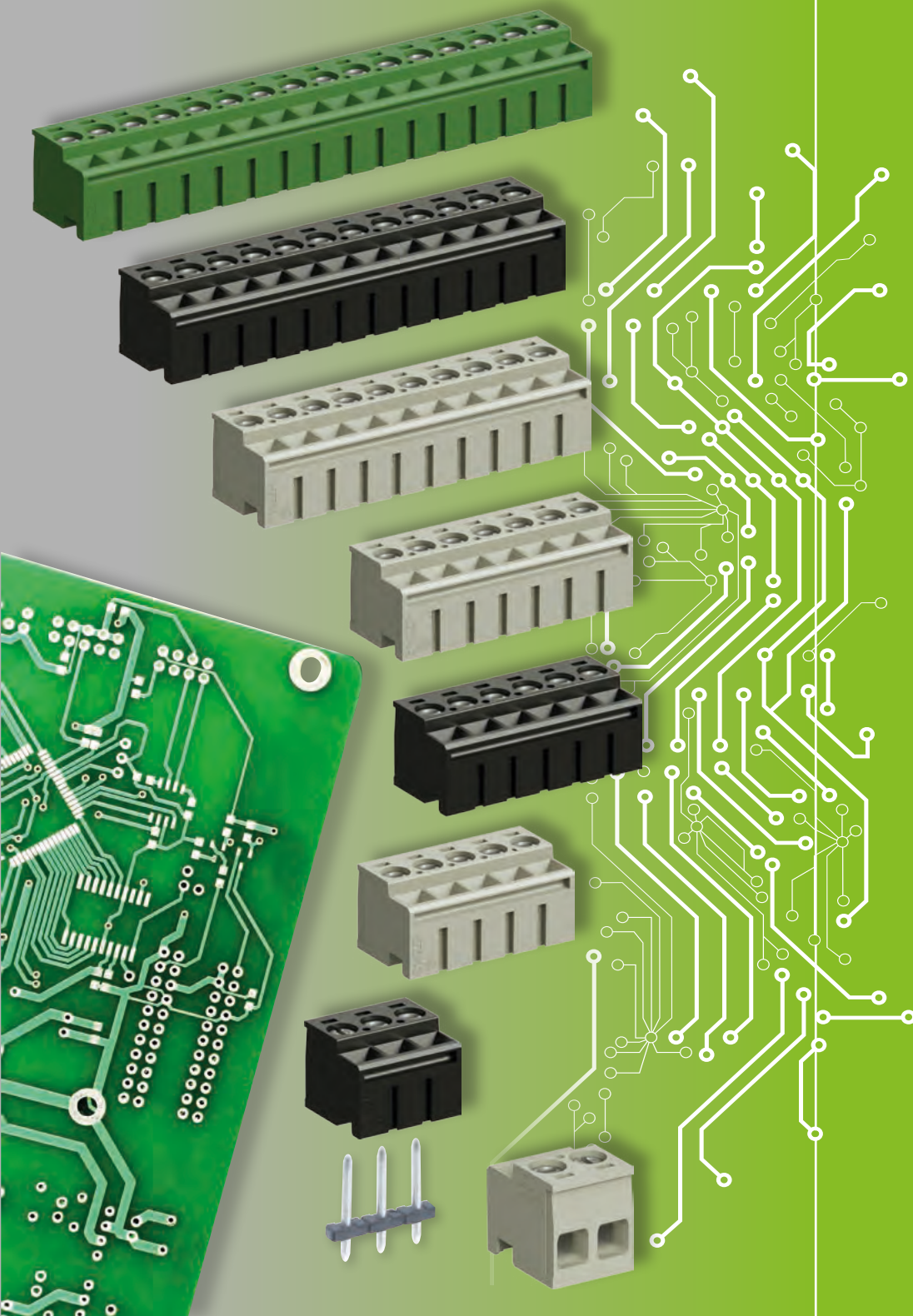


wiecon



wieland



wieland
50 YEARS
PCB CONNECTORS

wiecon

8142 ZP rising cage terminal
Compact . Powerful . Versatile



The revolution of the rising cage terminal in the 5 mm pitch – whip your PCB into shape



More power
for your PCB

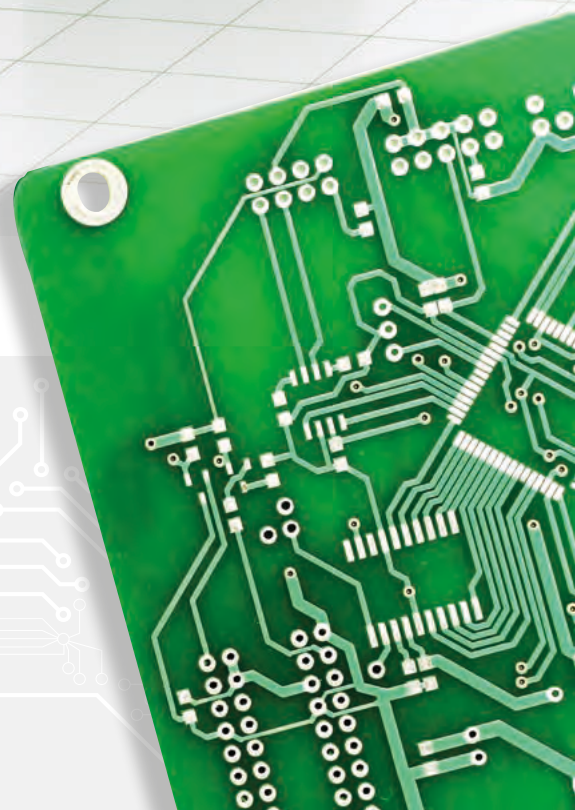
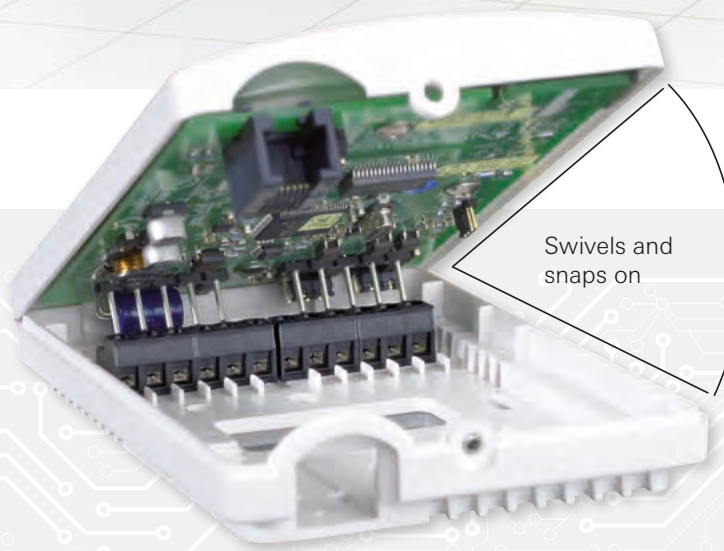
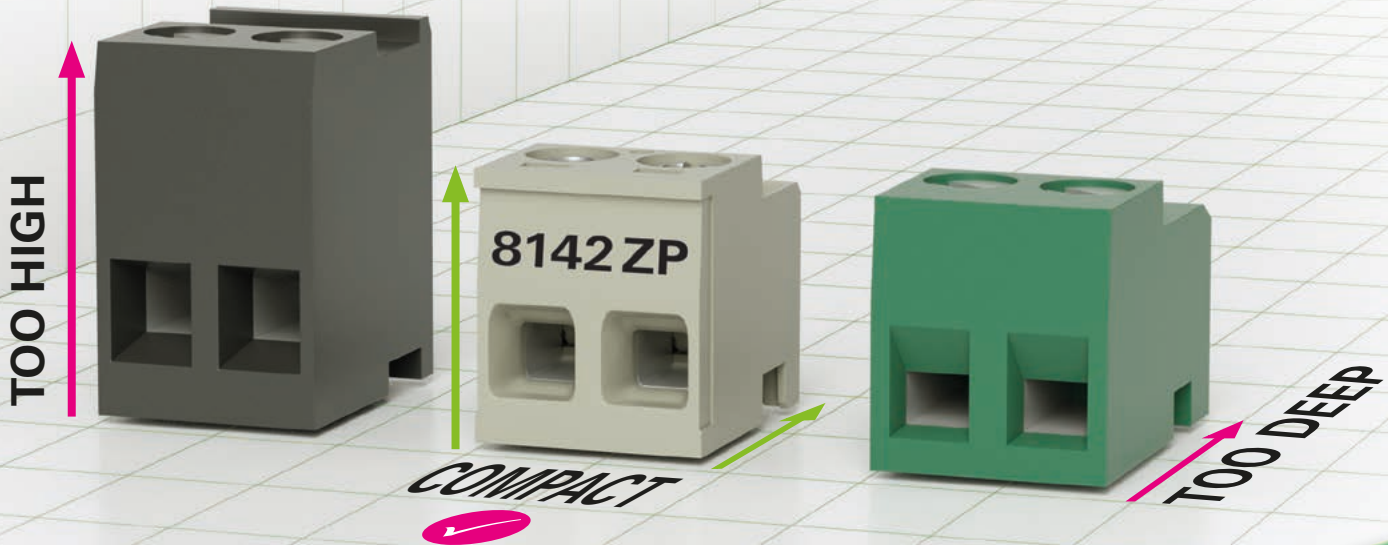


Compact design
more room on your PCB



Improved handling
for plugging in and connecting wires

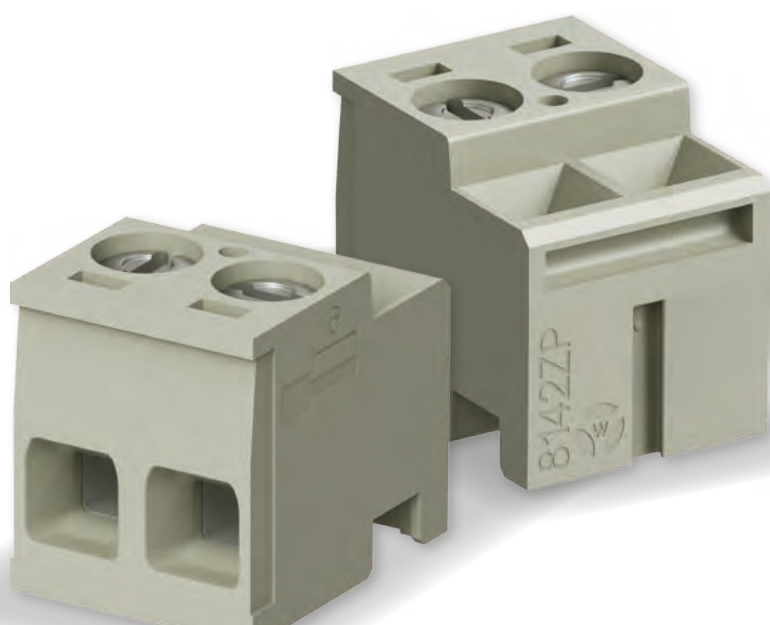
8142 ZP in size comparison with other models



wiecon 8142 ZP

The most compact and powerful connector on the market

Our new 8142 ZP rising cage terminal now offers even more advantages compared to standard products on the market. A current rating of 12 A, increased screw connection torque for added safety due to a special geometry of the housing, and the largest cross-section in the market are just a few of the advantages offered by this terminal – and all of this with the smallest possible dimensions. Additional features include coding pins, optional 2D barcode identification, and improved handling due to the ribs on the side of the housing. Finally, the 8142 ZP uses Wieland's proven rising cage clamp technology for reliable, maintenance free wire connections.



THE MOST COST EFFECTIVE
CONNECTORS

by Wieland Electric

Overview of benefits:

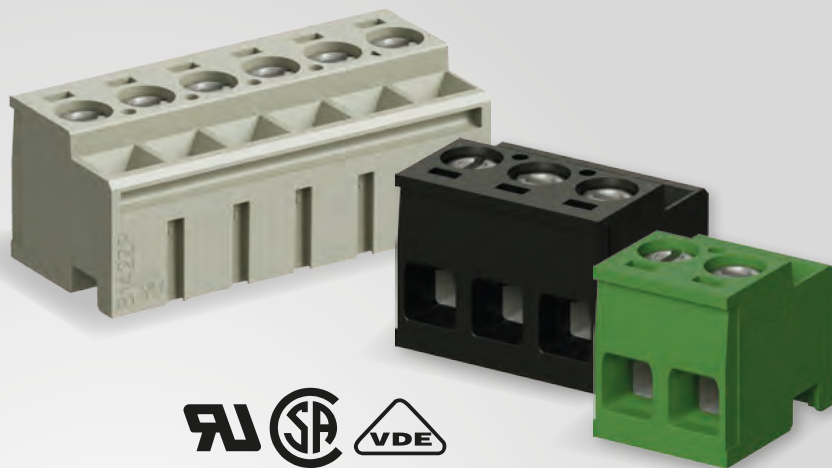
- **20% higher current rating** than comparable competitor products → **12 A**
- **More security** due to a special housing geometry allowing an increased maximum screw torque
- Wide range of cross-sectional areas from **0.14 mm² to 2.5 mm², fine-stranded and AWG 26 - 14**
- Tulip contact for the best possible electrical contact
- Rising cage technology for reliable, maintenance free wire connections
- Special housing geometry for improved handling
- Header pluggable from above and below for maximum flexibility



Wieland, the inventor of the pluggable PCB terminal – we connect your devices **QUICKLY** and **SAFELY**.

8142 ZP.

5.0 mm pitch,
2 to 16 poles

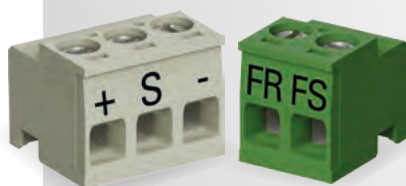


5.00 mm pitch

Order data

Poles	G (mm)	T (mm)	Part.No.	Std. pack
2	10.0	5.0	25.617.0255.0	100
3	15.0	10.0	25.617.0355.0	100
4	20.0	15.0	25.617.0455.0	50
5	25.0	20.0	25.617.0555.0	50
6	30.0	25.0	25.617.0655.0	50
7	35.0	30.0	25.617.0755.0	50
8	40.0	35.0	25.617.0855.0	50
9	45.0	40.0	25.617.0955.0	50
10	50.0	45.0	25.617.1055.0	50
11	55.0	50.0	25.617.1155.0	50
12	60.0	55.0	25.617.1255.0	50
13	65.0	60.0	25.617.1355.0	50
14	70.0	75.0	25.617.1455.0	50
15	75.0	70.0	25.617.1555.0	50
16	80.0	75.0	25.617.1655.0	50

For unmarked versions, use parts
25.617.3255.0 to 25.617.4655.0



**Special printing
to customer
requirements**

Colors

	RAL	Name	Color code
	7032	Gray	25.xxx.xxxx.0
	9005	Black	25.xxx.xxxx.1
	6017	Green	25.xxx.xxxx.7

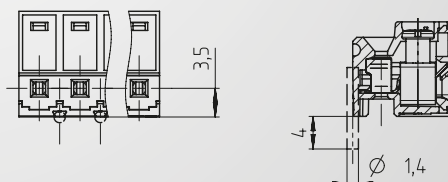
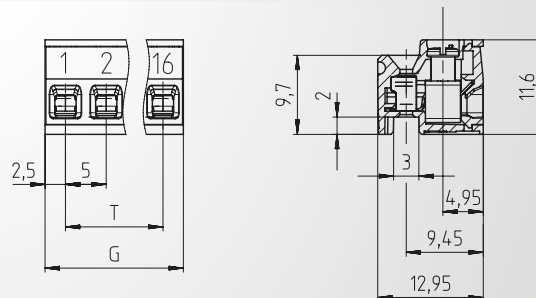
Accessories

Description	Part.No.	Std. pack
Coding plate, (6-pins)	06.562.6753.5	20



Technical data

Rated voltage	
IEC 4 kV / II	600 V
UL	300 V
CSA	300 V
Rated current	12 A
Wire connection range	
Fine stranded	0.14-2.5 mm ² / AWG 26 - 14
Solid	0.14-2.5 mm ² / AWG 26 - 12
Ferrules with insulating collars	0.25-1.5 mm ² / AWG 24 - 16
Multi-conductor connection	2 x 1.5 mm ² / 2 x AWG 16
Wire strip length	6 mm
Dimensions	
Assembly depth	12.95 mm
Assembly height	11.6 mm
Distance middle of pin to part end	3.5 mm
Distance pin to screw	4.5 mm
Screw	
Screw type	Slotted screw
Screw thread	M3



Coding pins
are available as
accessories

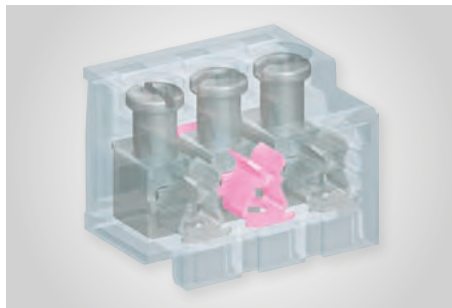
wiecon 8142 ZP

The best, made even better



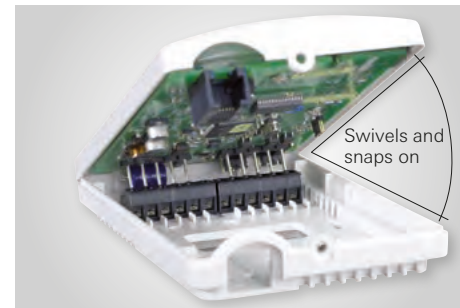
Safe

- Codable using coding pins
- Custom marking prevents part mix ups
- More safety when connecting the wire thanks to a special cover and housing geometry



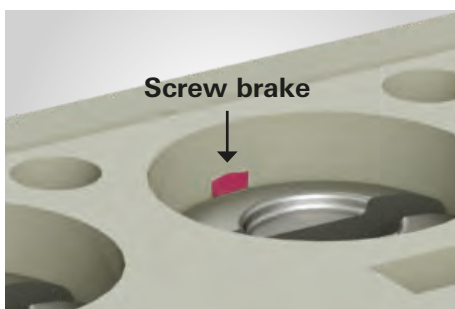
Powerful

- Current rating of **12 A** due to special geometry of the tulip contact
- For cross-sections up to **2.5 mm² / AWG 14**, fine-stranded, and **1.5 mm² / AWG 16** with ferrules



Versatile

- Swivels and snaps on
- Can be used with L pin strip (optional)
- Lock-and-release version (optional)
- Available in different colors



Unique

- Maintenance free connections thanks to our tried-and-tested screw brake
- No more loose screws in the packaging
- Also ensures that the terminal space is always open upon delivery



Individual 2D code

- 2D code can be applied with customer-specific data
- Large labeling areas



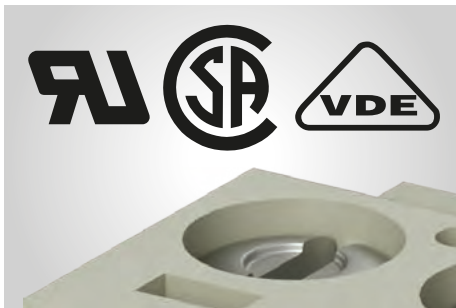
Custom printing

- Individual terminal printing
- Color printing possible using ink jet or pad printing
- Contact us for unique marking requirements

✓ **More safety**

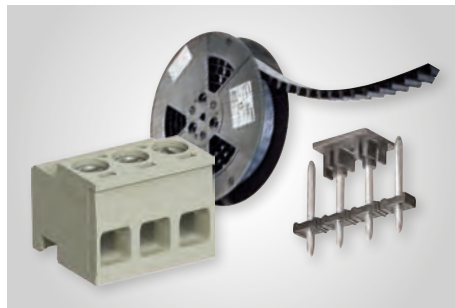
✓ **More flexibility**

✓ **More savings**



Worldwide application possible

- Slotted screw for standard screwdrivers
- UL, CSA, and VDE approvals



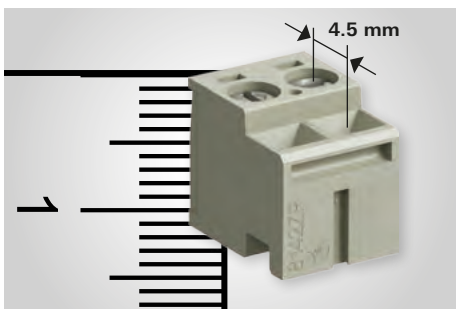
Cost-reducing

- Can be used with existing headers of different lengths, diameters, and packaging formats
- Most economical type of connector due to cost effective parts and packaging



Easy to install

- Large wire insertion opening
- Large insertion funnel makes connecting the header easier
- Recessed ribs make handling easier
- Wire strip length indicated on the housing



Compact

- Minimum external dimensions with maximum connection area
- Easily retrofitted into existing designs due to industry-standard distances between the pin and screw

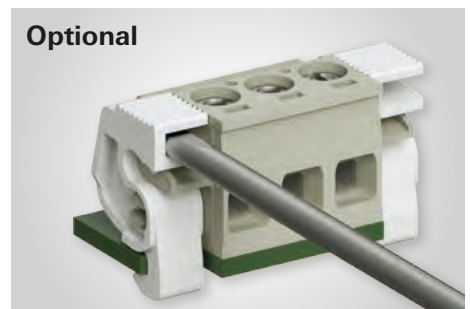


Optional

L-header

- Vibration-proof connections - sockets lock into the header
- Protects your electronics against unauthorized access

Contact us for details



Optional

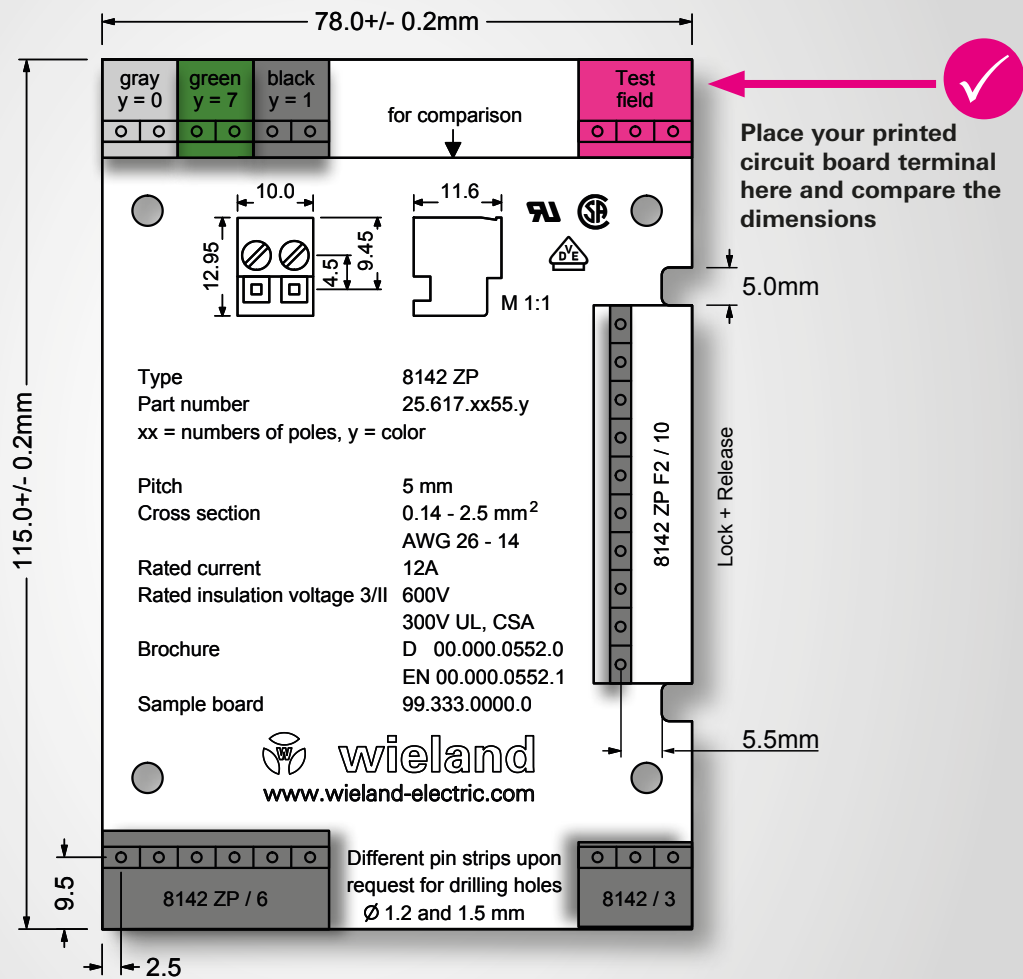
Lock + Release

Are you looking for a vibration-proof connection to your PCB? Would you also like to disconnect large numbers of poles from the PCB?

Contact us for details

Test.
and see

Order our sample printed circuit board (99.333.0000.0) and see for yourself the many advantages of the new pluggable 8142 ZP printed circuit board terminal from Wieland. The important dimensions and part numbers are conveniently displayed on the board, and you will be able to directly evaluate how you can benefit from this new exciting product.



SMALL | SMART
SOLUTIONS
by Wieland Electric

Order your free
sample board,
Part.No. 99.333.0000.0

@ ☎ ✉ ✓ Service.

If you have any questions, do not hesitate to contact us by phone
on: +49 951 9324-991 or at.ts@wieland-electric.com





USA
Wieland Electric Inc.
North America
2889 Brighton Road
Oakville, Ontario L6H 6C9
Phone +1 905 8298414
Fax +1 905 8298413
www.wielandinc.com



CANADA
Wieland Electric Inc.
North America
2889 Brighton Road
Oakville, Ontario L6H 6C9
Phone +1 905 8298414
Fax +1 905 8298413
www.wieland-electric.ca



GREAT BRITAIN
Wieland Electric Ltd.
Riverside Business Centre,
Walnut Tree Close
GB-Guildford/Surrey GU1 4UG
Phone +44 1483 531213
Fax +44 1483 505029
sales.uk@wieland-electric.com
www.wieland.co.uk



FRANCE
Wieland Electric SARL.
Le Cérame, Hall 6
47, avenue des Genottes
CS 48313,
95803 Cergy-Pontoise Cedex
Phone +33 1 30320707
Fax +33 1 30320714
info.france@wieland-electric.com
www.wieland-electric.fr



SPAIN
Wieland Electric S.L.
C/ Maria Auxiliadora 2, bajos
E-08017 Barcelona
Phone +34 93 2523820
Fax +34 93 2523825
ventas@wieland-electric.com
www.wieland-electric.es



ITALY
Wieland Electric S.r.l.
Via Edison, 209
I-20019 Settimo Milanese
Phone +39 02 48916357
Fax +39 02 48920685
info.italy@wieland-electric.com
www.wieland-electric.it



**BELGIUM & GD LUXEM-
BOURG**
ATEM-Wieland Electric NV
Bedrijvenpark De Veert 4
B-2830 Willebroek
Phone +32 3 8661800
Fax +32 3 8661828
info.belgium@wieland-electric.com
www.wieland-electric.be



DENMARK
Wieland Electric A/S
Vallørækken 26
DK-4600 Køge
Phone +45 70 266635
Fax +45 70 266637
sales.denmark@wieland-electric.com
www.wieland-electric.dk



SWITZERLAND
Wieland Electric AG
Harzachstrasse 2b
CH-8404 Winterthur
Phone +41 52 2352100
Fax +41 52 2352119
info.swiss@wieland-electric.com
www.wieland-electric.ch



POLAND
Wieland Electric Sp. z o.o.
Św. Antoniego 8
62-080 Swadzim
Phone +48 61 2225400
Fax +48 61 8407166
office@wieland-electric.pl
www.wieland-electric.pl



CHINA
Wieland Electric Trading
Unit 2703 International Soho City
889 Renmin Road,
Huang Pu District
PRC-Shanghai 200010
Phone +86 21 63555833
Fax +86 21 63550090
info-shanghai@wieland-electric.com
www.wieland-electric.cn



JAPAN
Wieland Electric Co, Ltd.
Nisso No. 16 Bldg. 7F
3-8-8 Shin-Yokohama,
Kohoku-ku
Yokohama 222-0033
Phone +81 45 473 5085
Fax. +81 45 470 5408
info-japan@wieland-electric.com



GERMANY
Headquarters
Wieland Electric GmbH
Brennerstraße 10 – 14
D-96052 Bamberg
Phone +49 951 9324-0
Fax +49 951 9324-198
info@wieland-electric.com
www.wieland-electric.de

Sales partners:
You can reach us worldwide in more than 70 countries.
The contact addresses are available at:
www.wieland-electric.com

Subject to technical modifications! **gesis**®, **RST**®, **GST**®, **GST18**®, **podis**®, **samos**®, and **saris**® are registered trademarks of Wieland Electric GmbH

**contacts
are
green.**