

### wiecon Type 8513 SEG

#### Two-tier pin header with 3.50 mm spacing

#### Characteristics

- Space-saving two-tier pin header with 3.50 mm spacing
- Mates with 8513 B connectors
- Space for markings
- Can be coded using standard coding pieces
- 3.50 mm spacing
- Can be fixed on PCB with screw flanges
- Color black (similar to RAL 9005)



#### Advantages

- High packing density
- Requires little space on the PCB
- Optimally suited for front panel applications
- Mismatching avoided by closed design and coding option
- Compatible with pluggable connectors from competition

Description	
<b>wiecon</b> Type 8513 SEG	
Two-tier pin header, angled	
Design	monolithic
Spacing	3.5 mm
Number of poles	24
Rated current	8 A UL 5 A CSA
Rated voltage	
Overvoltage category III / Pollution degree 3	125 V (DIN EN 60664-1)
Overvoltage category II / Pollution degree 2	250 V (DIN EN 60664-1)
UL, CSA, B, D	300 V
Rated peak voltage	2.5 kV
Pin dimensions	0.8 x 0.8 mm
Pin lengths	3.5 mm
Pollution degree	3
Material	PA 66
Temperature range	- 40° C – + 105° C
Flammability according to UL 94	V0
Approvals	CSA, UL



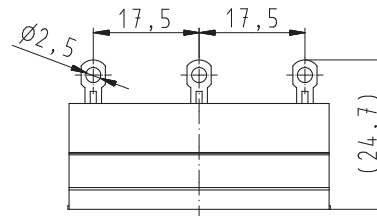
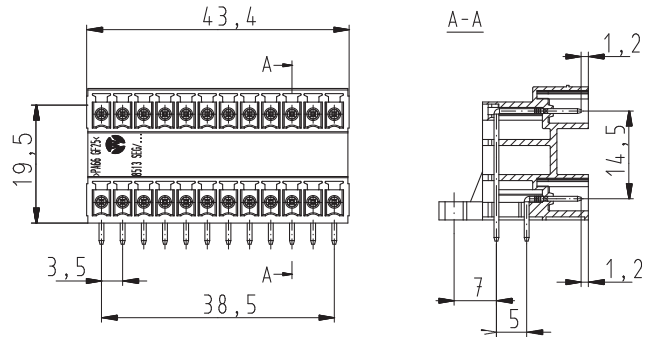
Headquarters:  
Wieland Electric GmbH  
Brennerstraße 10-14  
D-96052 Bamberg

Sales and Marketing Center:  
Wieland Electric GmbH  
Benzstraße 9  
D-96052 Bamberg

Phone +49 (951) 93 24-0  
Fax: +49 (951) 93 24-198  
www.wieland-electric.com

## Technical information

### Dimensions



Type	Part No.
8513 SEG 12/24 W OB	27.647.1253.1

#### AT Wieland

Components and system components for the control cabinet

- DIN rail terminal blocks
  - with screw connection
  - with spring clamp connection
  - with IDC connection
- Safety
  - Safety relays
  - Modular safety systems
- Fieldbus components
- Interface
  - Power supplies
  - Overvoltage protection
  - Measuring and monitoring relays
  - Time and switching relays
  - Coupling relays/solid state relays
  - Analog modules
  - Passive interfaces

Components and system components for field applications

- Remote automation
  - Remote power distribution
  - Remote fieldbus interface
- Industrial multipole connectors
  - Modular multipole connectors
  - High-density multipole connectors
  - High-current multipole connectors
  - Multipole connectors for hazardous areas
  - Bushings for control cabinets
  - D-Sub connectors
- Round connectors

Empty housings and appliance connectors/terminal strips

#### AT Schleicher

- PLC systems and CNC based control systems
- Operator panels
- Application engineering & system solutions
- Customized products

#### BIT Wieland

- Building installation systems
  - Mains connectors IP20/IP65...IP68
  - Bus connectors
  - Combined connectors
  - Low-voltage connectors
  - Flexible flat cable systems
  - Distribution systems
  - Switching devices for EIB/KNX, LON, Ethernet, radio control
  - DIN rail terminal blocks for electrical installations
  - Overvoltage protection

#### PCB connectors Wieland

- PC board terminals/PC board connectors
  - with screw connection
  - with spring clamp connection
  - with TOP connection