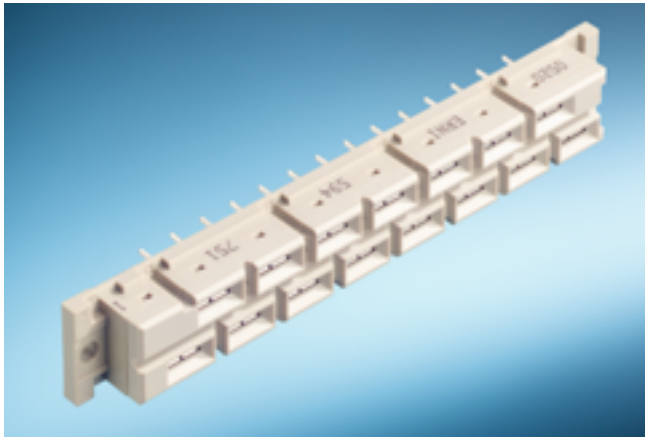
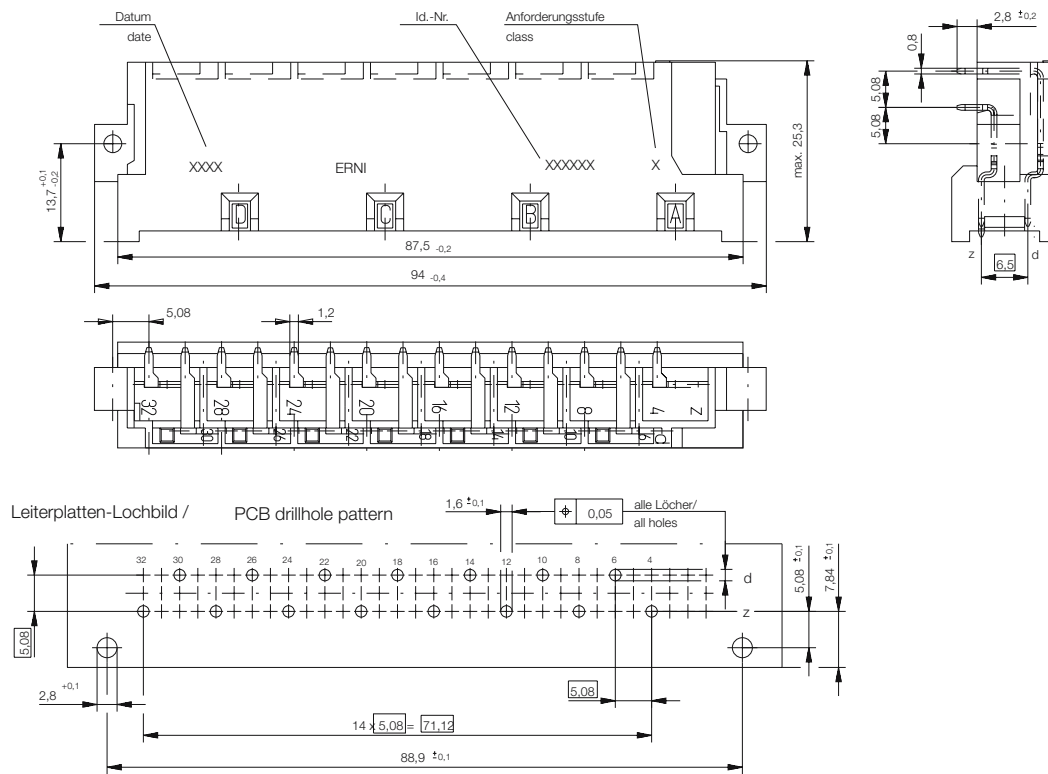


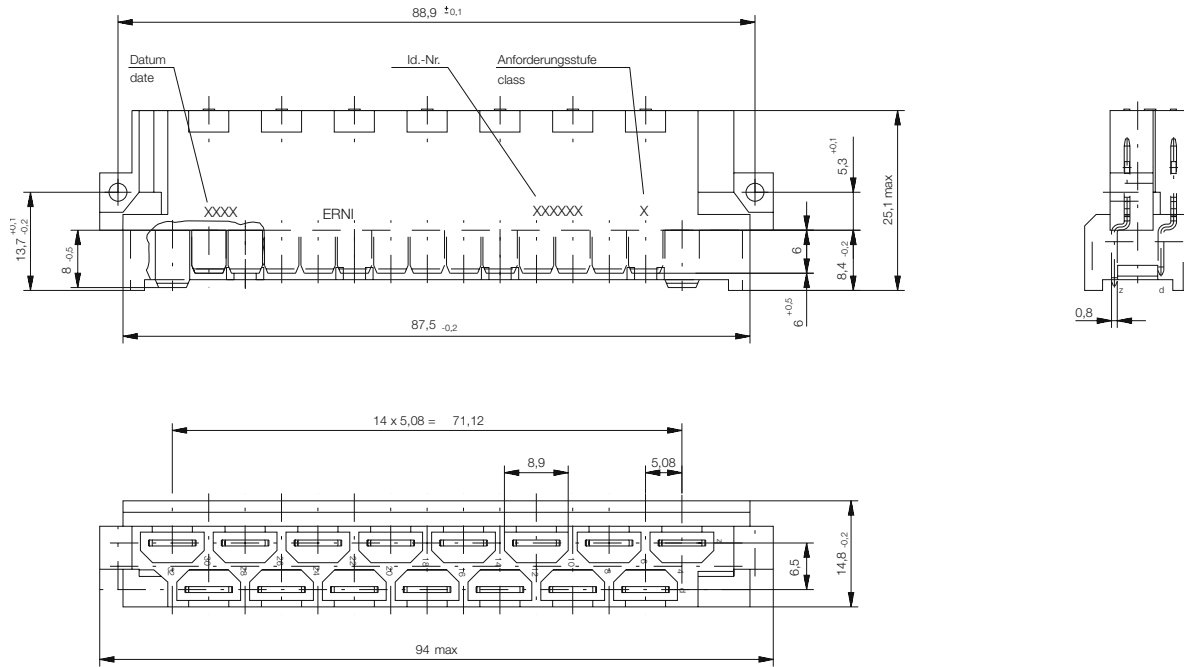
DIN 41612 / IEC 60603-2 Connectors Type H15



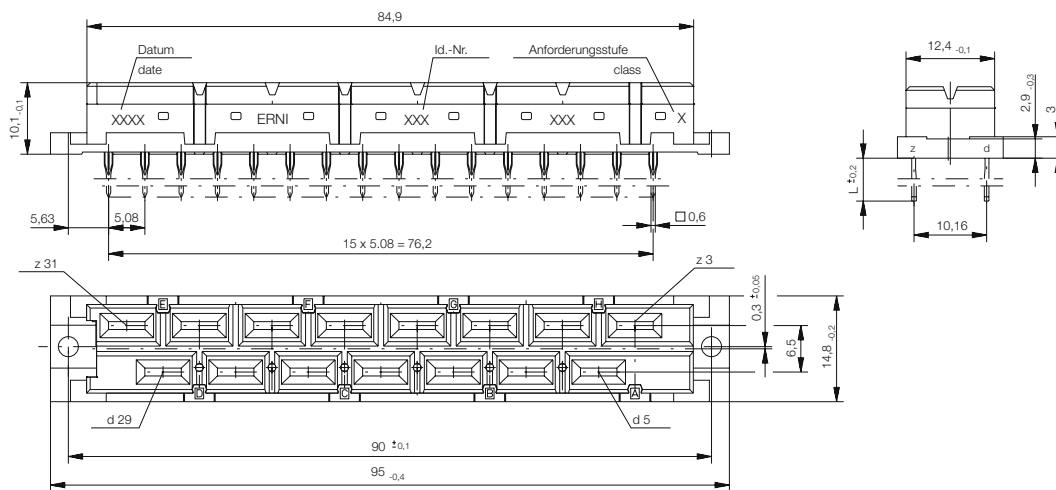
Dimensional Drawing Solder Male



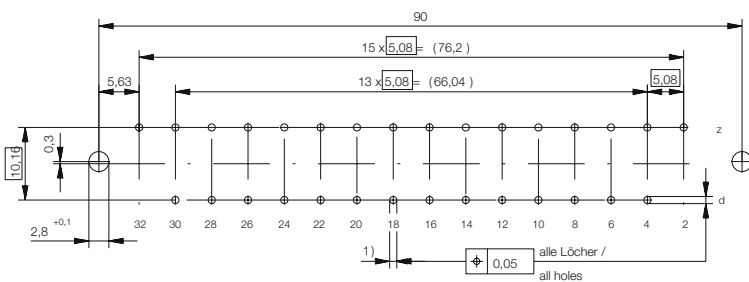
Dimensional Drawing Faston Male



Dimensional Drawing Pressfit Female

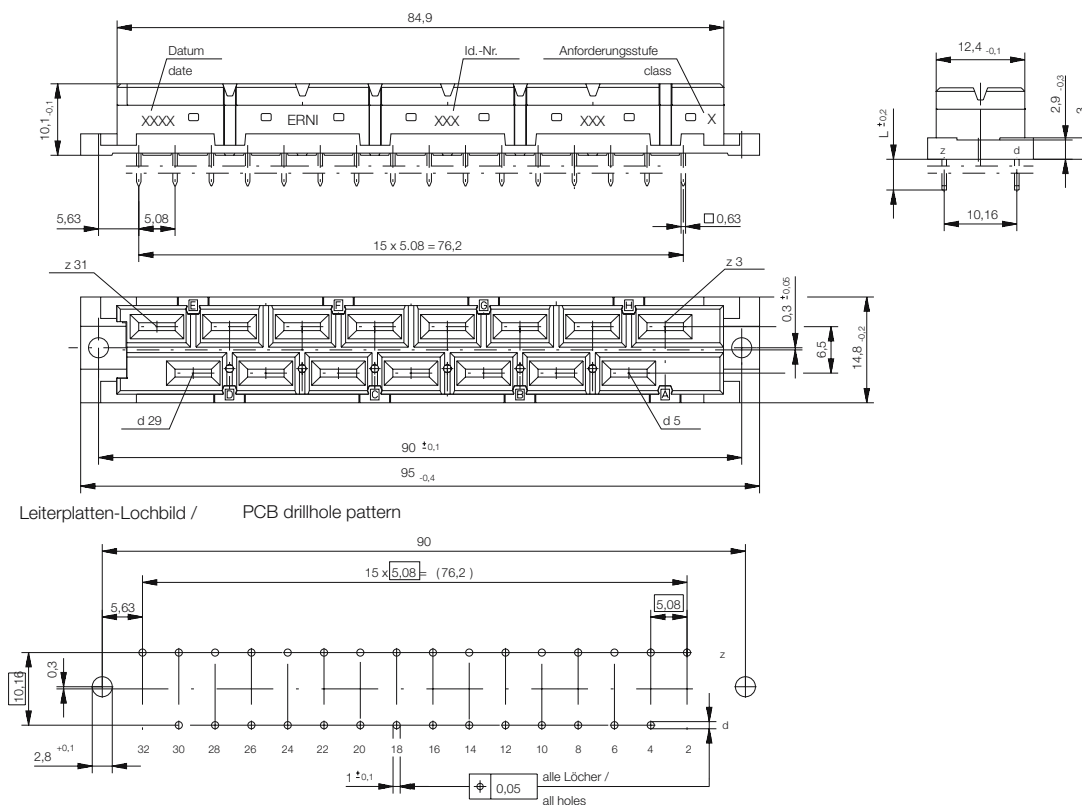


Leiterplatten-Lochbild / PCB drillhole pattern

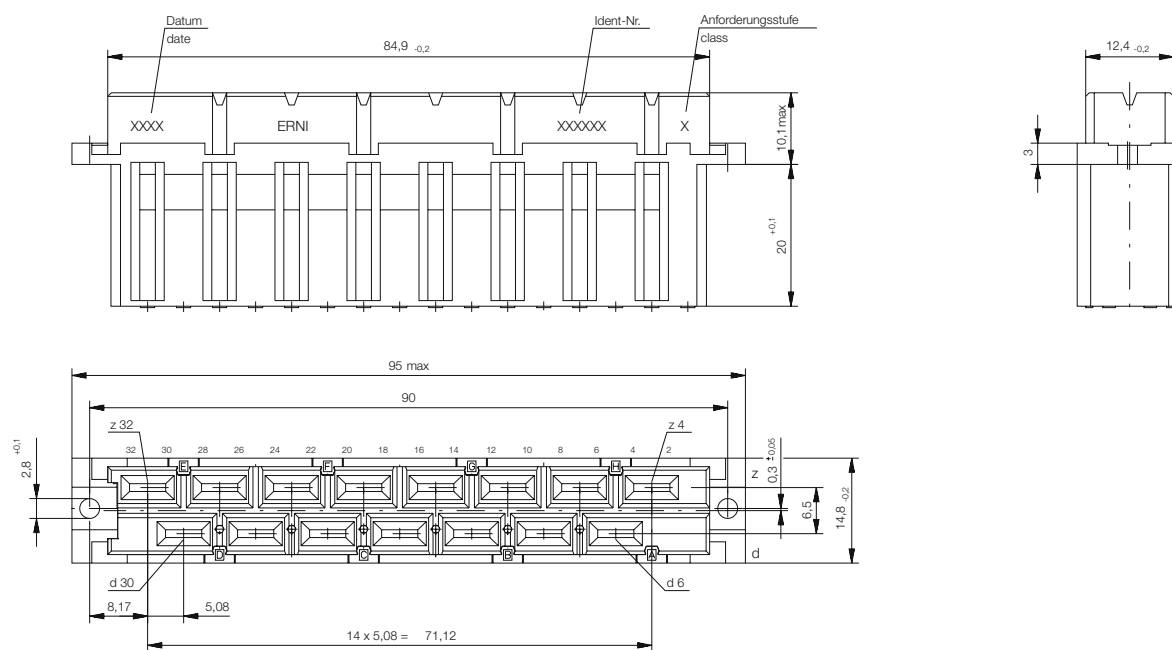


- 1) $\varnothing 1,0 \pm 0,09$ Durchmesser des metallisierten Loches
- $\varnothing 1,0 - 0,06$ Diameter of finished plated-through hole
- $\varnothing 1,15 - 0,03$ Bohrungsdurchmesser des Loches siehe Zeichnung 164062
- $\varnothing 1,15 - 0,03$ Diameter of drilled hole see drawing 164062

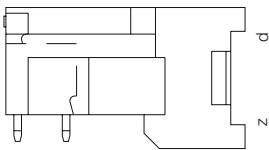
Dimensional Drawing Solder Female



Dimensional Drawing Faston Female



Ordering Information

No. of Pins	Termination	Term. Length	Pin Dimensions	Class	Pressfit Zone	Part Number
						
15	Solder	2.8mm	0.8 x 1.2 mm	1	-	413638
						
15	Solder	2.8mm	0.8 x 1.2 mm	1	-	414575
						
15	Solder	2.8mm	0.8 x 1.2 mm	1	-	413169

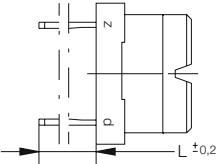
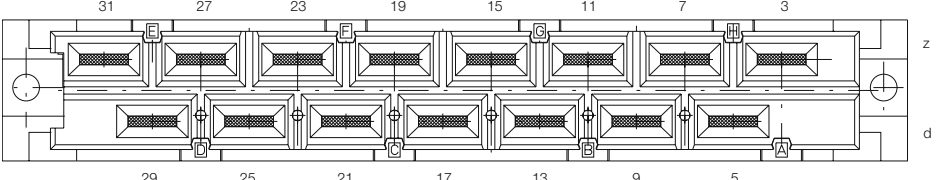
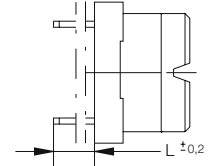
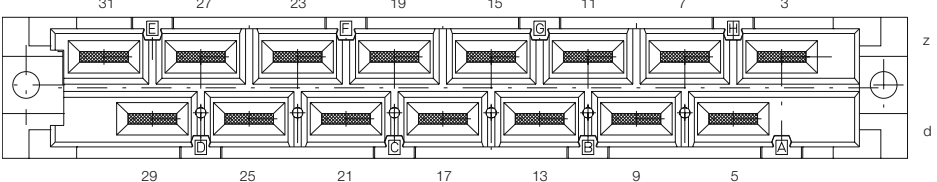
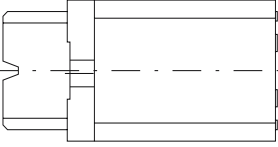
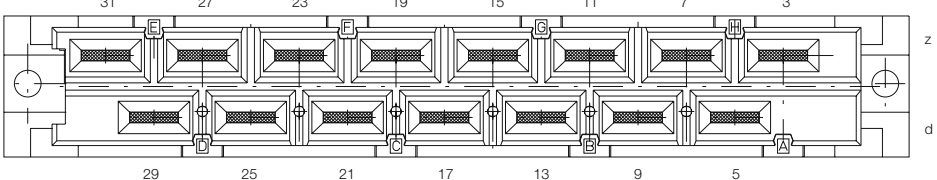
DIN 41612 / IEC 60603-2 Connectors Type H15 Male



Ordering Information

No. of Pins	Termination	Term. Length	Pin Dimensions	Class	Pressfit Zone	Part Number
15	Faston	26 mm	6.3 x 0.8 mm	1	-	413637
15	Faston	8 mm	6.3 x 0.8 mm	1	-	414574
15	Faston	8 mm	6.3 x 0.8 mm	1	-	413168

Ordering Information

No. of Pins	Termination	Term. Length	Pin Dimensions	Class	Pressfit Zone	Part Number
 15	Pressfit	6 mm	0.6 x 0.6 mm	1	2.5 mm	 594752
 15	Solder	4.3 mm	1.2 x 0.6 mm	1	-	 594750
15	Solder	4.3 mm	0.6 x 0.6 mm	1	-	594751
 15	Faston			1	-	 413170