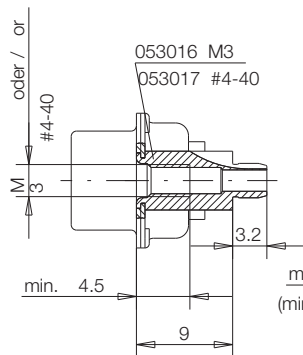
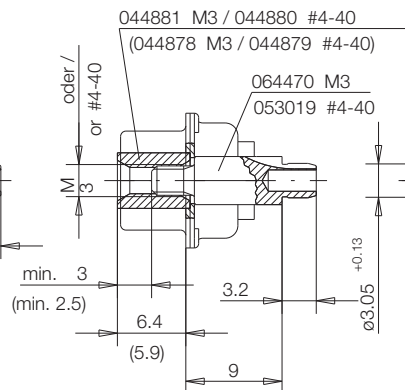


Schnitt A-A / cross section A-A

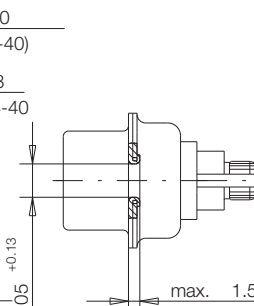
Einpressbolzen  
press-fit bolt :



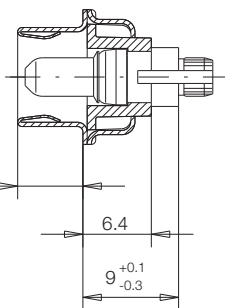
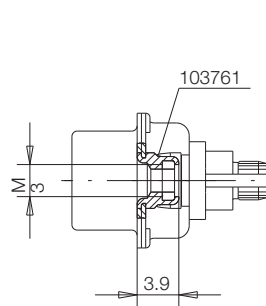
Einpressbolzen / Gewindehülse  
press-fit bolt / threaded sleeve :



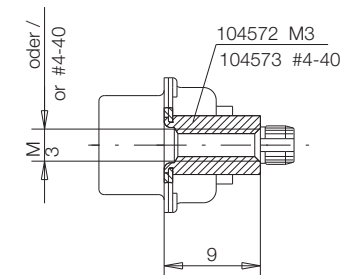
ohne Zubehoer  
without accessories :



Nietmutter mit Klemmteil  
clamping thread :



Nietmutter / riveted nut :



Zubehör / Accessories

Einpressbolzen / press-fit bolt  
Gewindehülse / threaded sleeve

Nietmutter / riveted nut

Nietmutter mit Klemmteil / clamping thread  
ohne / without

Schichtaufbau im metallisierten Loch / metal plating of plated-through hole  
für Einpresskontakt Zeichnung 114110 / for press-fit contact drawing 114110  
für Einpressbolzen Zeichnung 114109 / for press-fit bolt drawing 114109

Ident-Nr./ Part No. :	Refer to table on page 2
Polzahl/ No. of contacts :	Refer to table on page 2
Anschlussart/ Terminal Type :	Pressfit
Anschlusslänge/ Terminal Length :	3.2 mm
Bauart/ Type :	8W8
Anforderungsstufe/ Class :	201=0.8µm (30 µin) Au CONTACT, GOLD/LEAD TERMINAL
Aufdruck/ Logo :	ERNI
Zubehör/ Accessory :	Refer to table on page 2
Sonderausführung/ Special :	Refer to table on page 2

Information:	Tolerances		Scale	2:1
All rights reserved. Only for information. To insure that this is the latest version of this drawing, please contact one of the ERNI companies before using.	Subject to modification without prior notice. Drawing will not be updated.	All Dimensions in mm	Designation	
			TMC-P 8W8-EP36-09.0-8 TMC-P 8W8-EP36-09.0-8	
	www.ERNI.com	054881		1
c	29.04.1998	M:00021151.SZN		TMCP
Index	Date			

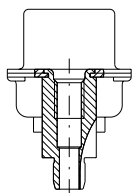
Consider protection memo from DIN 94

## Ordering Information

### D-Sub Connector High Power Pressfit Vertical Male Assembly Height 9 mm

Number of Pins

8W8

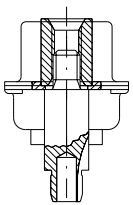


Accessory Termination Side: Pressfit bolt M3

104284

Accessory Termination Side: Pressfit bolt #4-40

063626



Accessory Mating Side: Threaded sleeve M3    Accessory Termination Side: Pressfit bolt

114137

Accessory Mating Side: Threaded sleeve #4-40    Accessory Termination Side: Pressfit bolt

063783

## Ordering Information press-in tools

Number of Pins

Upper Tool with Quick  
Change Device

Lower Tool

8W8

220223

220285