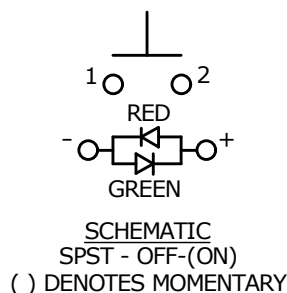
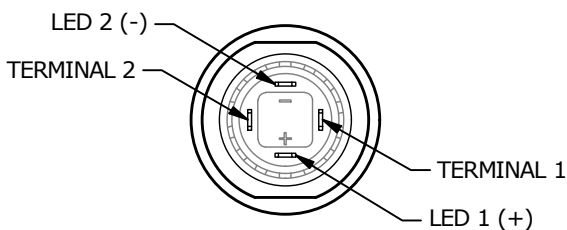
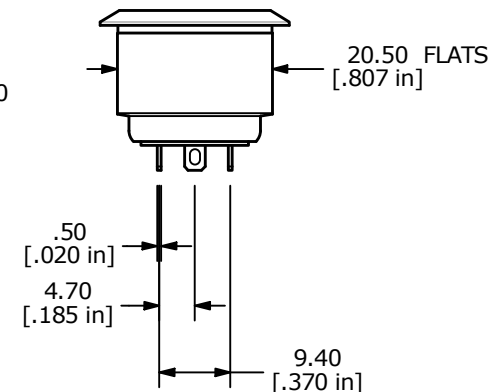
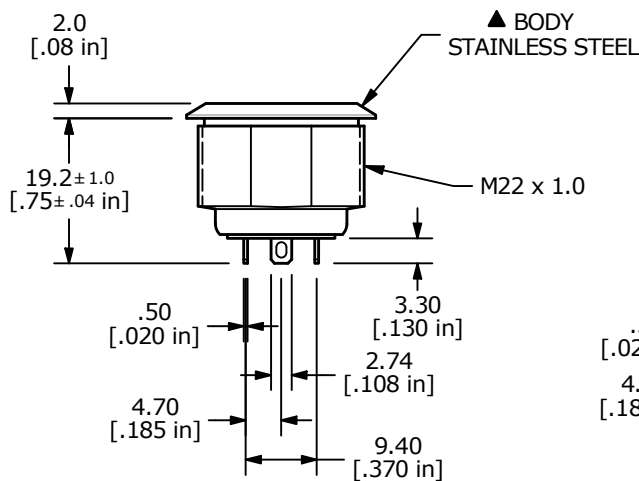
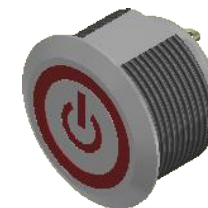
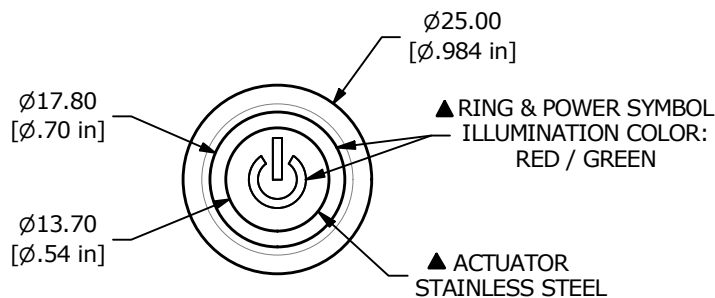


RECOMMENDED PANEL CUTOUT
 MAX. PANEL THICKNESS 1-6mm



- NOTE:
- ALL DIMENSIONS IN MM [INCH]
 - GENERAL TOLERANCE: X.X = ± 0.4
 X.XX = ± 0.25
 - TERMINAL NUMBERS FOR REF ONLY
 - CONTACT MATERIAL: SILVER
 - RATING: 2A 36 VDC
 - ELECTRIC LIFE: 200,000 CYCLES
 - DIELECTRIC STRENGTH: 2,000 VAC MIN. FOR 1 MINUTE
 - CONTACT RESISTANCE: 50m Ω MAX. @ 1A 12VDC
 - OPERATING TEMP.: -20°C to 70°C
 - ▲ DENOTES CRITICAL PARAMETER.
 - LAMP VOLTAGE: RED 20mA 2.0V TYP., GREEN 20mA 3.1V TYP.
 - TRAVEL: 1.80mm
 - ACTUATION FORCE: 4.5 \pm 1.5 N
 - MOUNTING NUT TORQUE: 1-3 Nm
 - INGRESS PROTECTION: IP67, IK10
 - HARDWARE SUPPLIED: O-RING AND HEXNUT



REV	ECO NO	DESCRIPTION	DATE	BY
D	ECO-101693	print update	03/06/23	MW



OBJECT ID
 000025990

TITLE SV7F23SS-6G1				
SCALE	DATE	DR	DWG	REV
1:1	11/5/2019	MJR	T870001	D