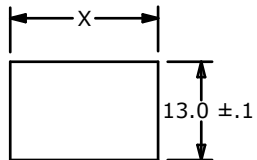
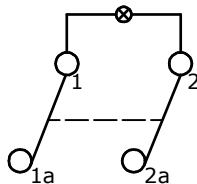


▲ SWITCH FUNCTION		
POS. 1	POS. 2	POS. 3
OFF	NONE	ON
OPEN	N/A	1-1A, 2-2A

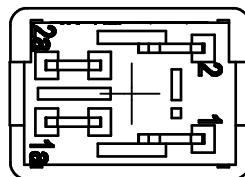
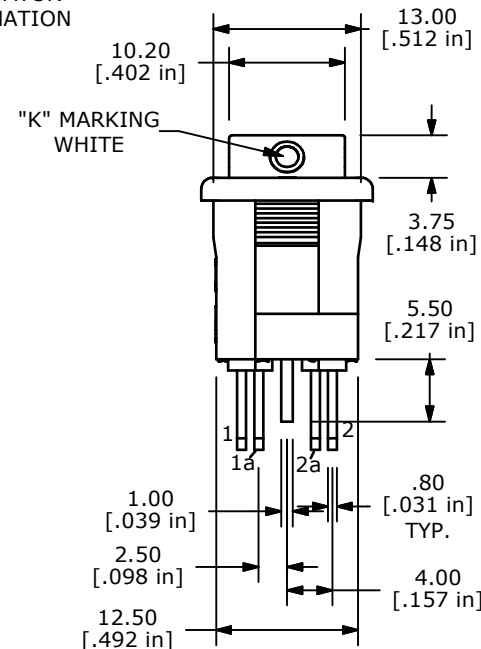
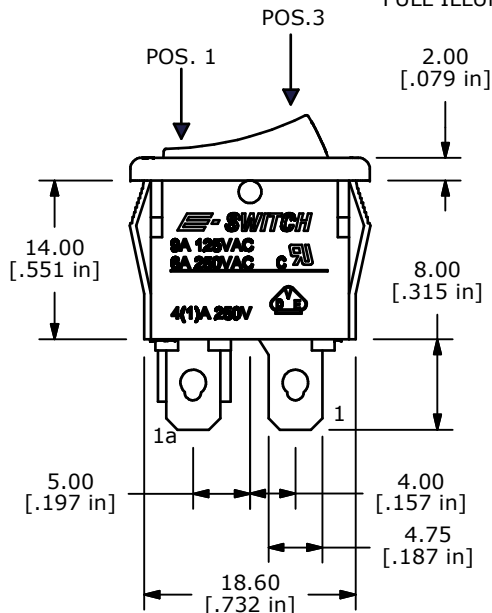
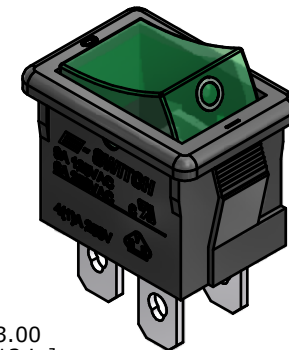
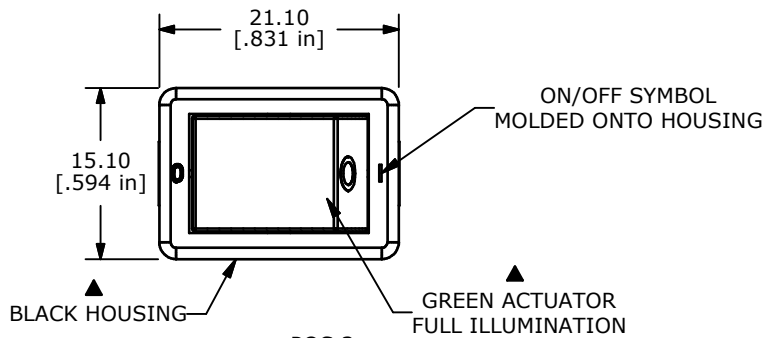


RECOMMENDED PANEL MOUNTING

PANEL THICKNESS	X
0.75-1.25	19.1-19.2
1.25-2.00	19.3-19.4
2.00-3.00	19.4-19.6



CIRCUIT: DPST



- NOTES:
 1. ALL DIMENSIONS IN MM [INCH]
 2. GENERAL TOLERANCE: X.X=±0.4
 X.XX=±0.25

- ▲3. RATING:
 6A @250VAC;9A @125VAC (UL, CSA, VDE)
 4(1)A @250VAC (ENEC)
 4. LAMP VOLTAGE: 125VAC (NEON BULB)
 5. MATERIAL: CONTACT SURFACE: COIN SILVER, SILVER PLATE
 TERMINAL: COPPER ALLOY W/SILVER PLATE.
 6. CONTACT RESISTANCE: 20mΩ TYP. INITIAL
 7. INSULATION RESISTANCE: 1,000MΩ @ 500VDC
 8. DIELECTRIC STRENGTH: >1,500V RMS min. @SEA LEVEL
 9. MECHANICAL LIFE: 30,000 CYCLES.
 10. ELECTRICAL LIFE: 10,000 CYCLES
 11. ▲ DENOTES CRITICAL PARAMETER.
 12. 2002/95/EC (ROHS) COMPLIANT
 13. DEGREE OF PROTECTION: IP20

▲ NEON BULB			
PARAMETERS	SYMBOL	MAX.	UNITS
LAMP VOLTAGE(AC)	V	125	V
STARTUP VOLTAGE	V _s	95	V
CURRENT	I	0.8	mA
SERIES RESISTANCE (125V)	R	120	OMHS



TITLE R1973BBLKGLKF1

A	21375	RELEASE FOR PRODUCTION	2/13/14	EBP
REV	PCR NO	DESCRIPTION	DATE	BY

SCALE	DATE	DR	DWG	REV
	2/13/2014	EBP	M400128	A

THE INFORMATION CONTAINED IN THIS DOCUMENT IS PROPRIETARY TO E-SWITCH AND IS NOT TO BE COPIED OR TRANSFERRED