



**CR SERIES**

**HIGH PERFORMANCE POWER ENTRY MODULE EMI FILTERS**



**INTRODUCTIONS**

1. Power module incorporates an IEC connector, double-fuse holder, optional voltage selector switch and double-pole power switch, plus an EMI filter all-in-one easy-to-install unit.
2. Adapts to 100-120V or 200-240V input voltage by simply reversing the fuse holder. (Use only with 250V fuse)
3. All part numbers are UL recognized, CSA certified and VDE approved.

**COMPONENTS**

PART NO.	L1 (mH)	L2 (mH)	C1, C2 (uF)	C3 (uF)	Cy (pF)
03CR2/A	16.4	3.9	0.22	0.1	3300
03CR3/A					
03CR4/A					
06CR2/A	3.6	1.9			
06CR3/A					
06CR4/A					
• 10CR2/A	0.7	0.13			
• 10CR3/A					
• 10CR4/A					

- R: 470K  $\Omega$
- Lg :120uH (CRXA only)
- VDE approved to 6A/250VAC

**MINIMUM INSERTION LOSS IN dB**

COMMON MODE (L-G) IN 50 OHM SYSTEM						
CURRENT RATING	FREQUENCY-MHz					
	.15	.50	1.0	5.0	10	30
3A	50	60	55	45	45	32
6A	40	55	55	45	40	25
10A	12	30	40	50	40	35
DIFFERENTIAL MODE (L-L) IN 50 OHM SYSTEM						
3A	30	55	65	65	50	45
6A	12	50	60	60	55	45
10A	6	30	55	55	55	40

**MECHANICAL CONSTRUCTION**

DELTA PART NO.	03CR2/A	03CR3/A	03CR4/A
	IEC CONNECTOR	$\Delta$	$\Delta$
DOUBLE-FUSE HOLDER	$\Delta$	$\Delta$	$\Delta$
•DOUBLE-POLE POWER SWITCH	$\Delta$	$\Delta$	-
VOLTAGE SELECTOR SW	-	$\Delta$	$\Delta$
ELECTRICAL SCHEMATIC	FIG. B	FIG. B	FIG. A

- UL, CSA & VDE approved current rating: UL/CSA-10A both at 125VAC & 250VAC; VDE-10A at 250VAC.
- Electrical lifetime: 10,000 cycles.
- Maximum inrush current: 51A.

**SPECIFICATIONS**

1. Maximum leakage current each line-to-ground @ 115VAC 60Hz: 0.25mA @ 250VAC 50Hz: 0.45mA
2. Hipot rating (one minute) line-to-ground: 2250VDC line-to-line: 1450VDC
3. Operating frequency: 50/60Hz
4. Rated voltage: 115/250VAC

**ELECTRICAL SCHEMATIC**

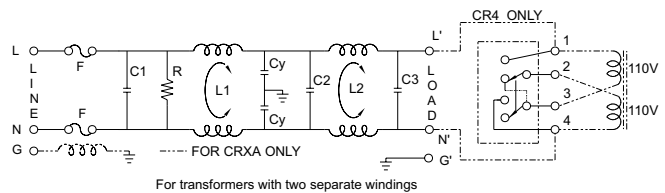


FIG. A

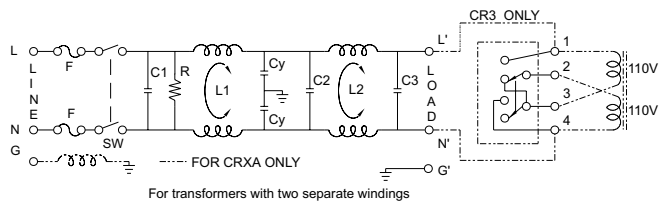
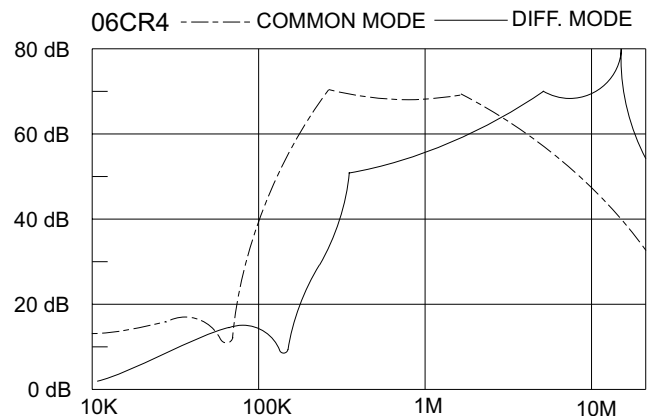


FIG. B

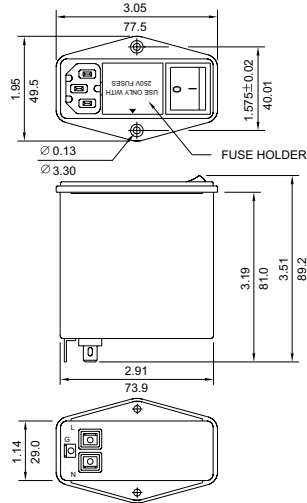
**INSERTION LOSS (TYPICAL)**



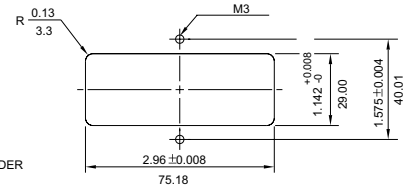
## MECHANICAL CONSTRUCTION



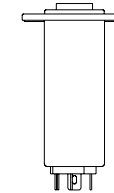
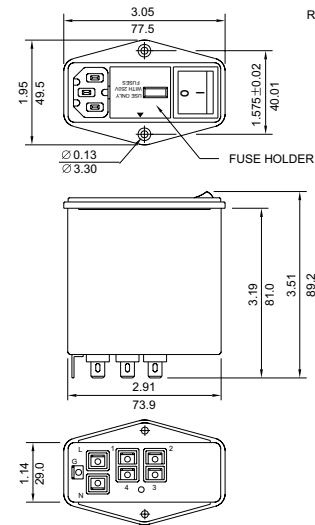
CR2/A



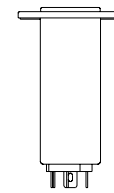
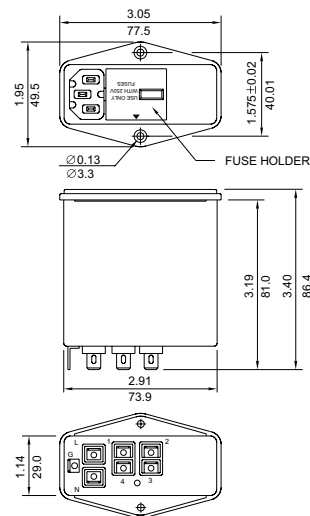
SUGGESTED MOUNTING CUTOUT  
(MOUNTING FROM FRONT)



CR3/A



CR4/A



UNIT:  $\frac{\text{INCH}}{\text{mm}}$