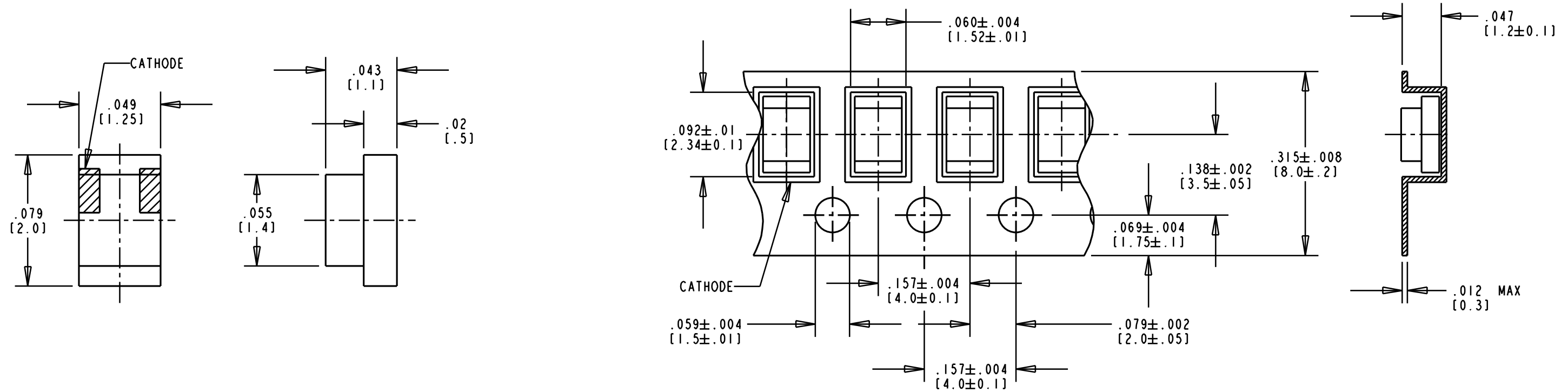


DIALIGHT CATALOG P/N	DIFFUSED LENS COLOR	PEAK EMISSION WAVELENGTH (nm)	VIEWING ANGLE (°) 2 @ 1/2	CAPACITANCE (pF); @ V _f = 0; f = 1MHz	LUMINOUS INTENSITY (mcd) @ I _f = 10 mA; 25 °C		FORWARD VOLTAGE (V) @ I _f = 20 mA; 25 °C		REVERSE CURRENT (μA); 25 °C
				TYP.	MIN.	TYP.	TYP.	MAX.	MAX.
597-3006-607	RED	635	130	24	2.0	6.0	2.0	2.6	100 @ V _R = 5 V
597-3305-607	GREEN	565	130	30	4.0	8.0	2.1	2.6	100 @ V _R = 5 V
597-3405-607	YELLOW	585	130	35	2.0	6.0	2.1	2.6	100 @ V _R = 5 V

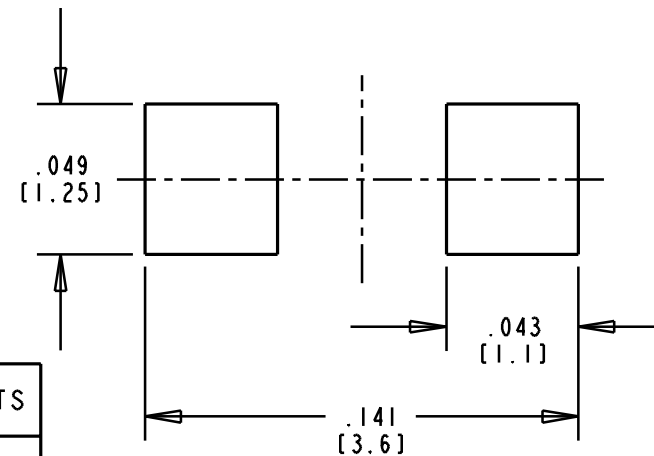
REV.	ECN NO.	REVISIONS	DRN.	CKD.	APP.	DATE
A		NEW RELEASE	TC			



PACKAGE DIMENSIONS OF TAPE AND REEL

NOTES:

- EPOXY COLOR: WATER CLEAR.
- DIE: GaP.
- LEADS: SOLDER PLATED.
- SOLDER ADHERANCE: BOTH LEADS PER MIL-STD-202E, METHOD 208C.
- PART TAPED AND REELED PER EIA STANDARD 481-1, WITH CATHODE TOWARD SPROCKETS.
- PART SUPPLIED 3000 DEVICES PER 7" DIAMETER REEL, ONE REEL PER SEALED ALUMINUM BAG WITH DESICCANT.
- LABELING FOR REEL AND OUTSIDE OF ALUMINUM FOIL BAG: DIALIGHT P/N, QUANTITY PER REEL, DATE CODE, INTENSITY BIN CODE, LOT NUMBER AND COUNTRY OF ORIGIN.
- DIALIGHT P/N: 597-3XXX-607.
- TAPE AND REEL LEDS MAY REQUIRE RE-TAPING AFTER TWELVE MONTHS.



PAD DIMENSIONS

ABSOLUTE MAXIMUM RATINGS AT 25 °C AMBIENT	597-			UNITS
	3006-607	3305-607	3405-607	
POWER DISSIPATION	100	100	60	mW
CONTINUOUS FORWARD CURRENT	30	30	20	mA
PEAK FORWARD CURRENT (1/10 DUTY CYCLE, 0.1 ms PULSE WIDTH)	120	120	80	mA
DERATING LINEAR FROM 50 °C	0.6	0.6	0.4	mA/ °C
REVERSE VOLTAGE	5			V
SOLDERING TEMPERATURE (.063/(1.60) FROM BODY	260 °C FOR 5 SEC			°C
OPERATING TEMPERATURE	-55 TO +85			°C
STORAGE TEMPERATURE	-55 TO +85			°C

THIS DRAWING AND THE CONTENTS HEREIN ARE CONFIDENTIAL AND THE SOLE PROPERTY OF DIALIGHT. REPRODUCTION OF THIS DRAWING OR CONSTRUCTION OF ANY PARTS WITHIN THIS DRAWING ARE FORBIDDEN WITHOUT THE WRITTEN CONSENT OF DIALIGHT.

SCALE NONE	DRAWING NUMBER	REV
ALL DIM'S IN: INCHES	C-16771	A
TOLERANCES: UNLESS OTHERWISE SPECIFIED	TITLE SMT LED	
FRACTIONS: ±1/64	MATERIAL	
DECIMALS (.XX): ±.020	Dialight	
DECIMALS (.XXX): ±.015	1913 ATLANTIC AVE. MANASQUAN, N.J. 08736	
ANGLES: ±1°	SHEET OF FAMILY TABLE:	
FINISH:	FSCM 83330	