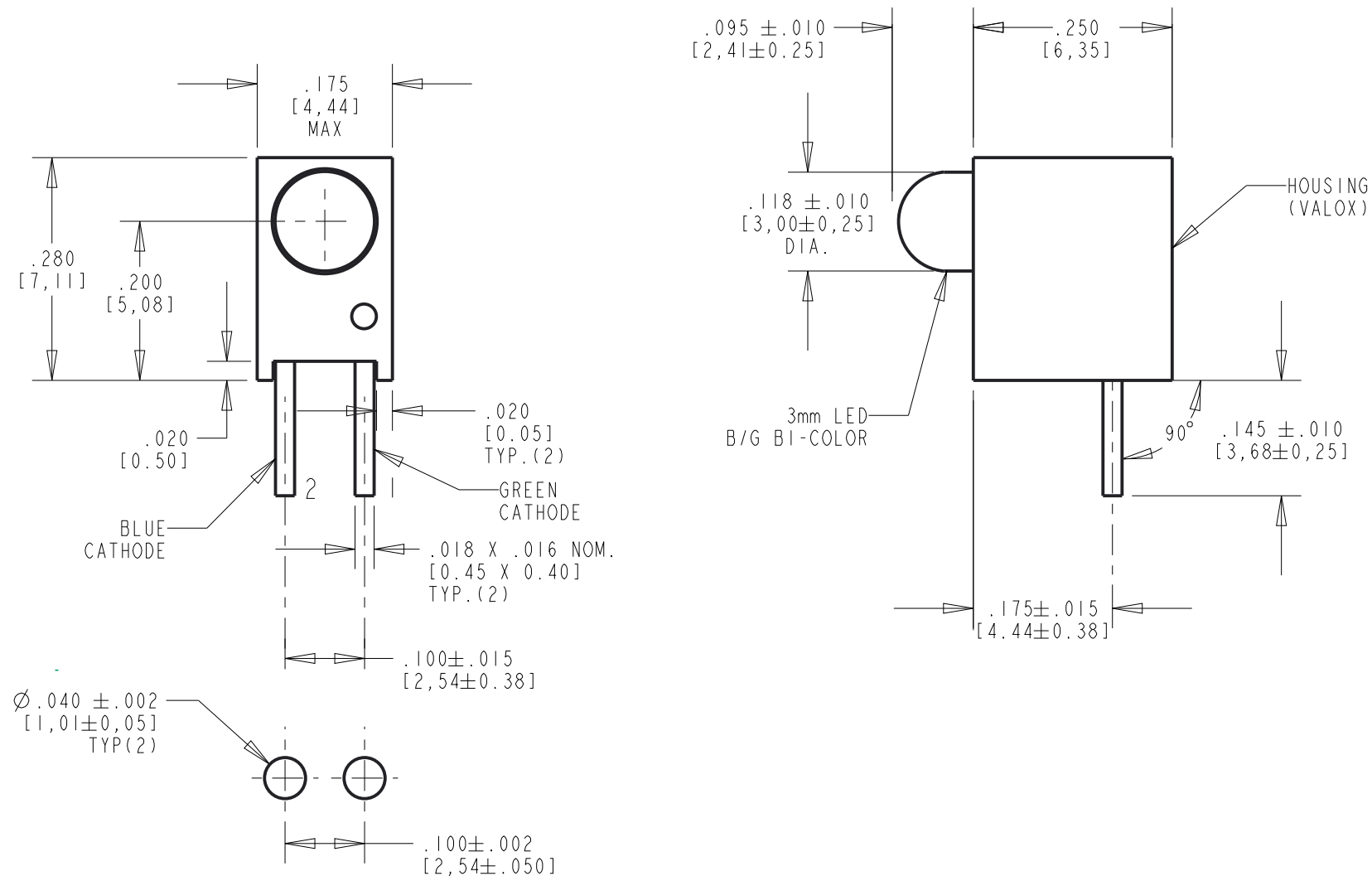


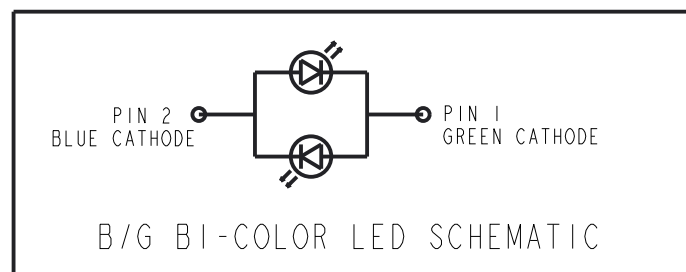
REV	REVISIONS	DRN	CKD	APP	DATE
A	NEW RELEASE	TWC	N.O.	MES	1-6-06
B	REVISED TOL. ON LED DIA. WAS $\pm .004$ ON $.100$, $.175$ DIM'S WAS DEFAULT TOL, ADDED METRIC DIM (MILLIMETERS)	SM			
C	UPDATED LED SPECS	LD	NO		11-11-21



RECOMMENDED P.C.B. HOLE PATTERN

LED COLOR = YELLOW/GREEN BI-COLOR						
OPERATING CHARACTERISTICS AT 25°C AMBIENT						
CHARACTERISTICS	COLOR	MIN	TYP	MAX	UNITS	TEST CONDITIONS
LUMINOUS INTENSITY	BLUE	65	140	310	mcd	$I_f = 20$ mA
	GREEN	30	60	140		
FORWARD VOLTAGE	BLUE	2.6	3.2	3.8	V	$I_f = 20$ mA
	GREEN	1.6	2.1	2.6		
PEAK WAVELENGTH	BLUE		468		nm	
	GREEN		574			
VIEWING ANGLE	ALL		100		Degree	

ABSOLUTE MAXIMUM RATING AT 25°C AMBIENT			
	UNITS	BLUE	GREEN
POWER DISSIPATION	mW	76	78
CONTINUOUS FORWARD CURRENT	mA	60	60
DERATE LINEARLY FROM 30°C FOR BLUE / 50°C FOR GREEN	mA/°C	0.45	0.56
PEAK FORWARD CURRENT (1/10 DUTY CYCLE, 0.1 ms PULSE WIDTH)	mA	60	60
LEAD SOLDERING TEMPERATURE, 6 SEC., 1/16" FROM BASE	°C	260	
OPERATING TEMPERATURE	°C	-30 TO +85	
STORAGE TEMPERATURE	°C	-40 TO +100	



NOTES:


- LEADS TO FIT INTO HOLE PATTERN SPACED AS SHOWN.
- LEAD FINISH IS MATTE TIN (Sn)
- LED LEAD DIMENSIONS SHOWN ARE MEASURED AT HOUSING EXIT.
- PIN NUMBERS FOR REFERENCE ONLY, DESIGNATION NON-EXISTENT ON PARTS.
- DIALIGHT PART NUMBER: 551-3307F.
- THIS ASSEMBLY CONTAINS ELECTROSTATIC DISCHARGE SENSITIVE DEVICES (ESDS). MAINTAIN ALL PRECAUTIONARY MEASURES DURING ASSEMBLY, HANDLING AND STORAGE IN ACCORDANCE WITH IPC-A-610.

RoHS Compliant 551-3307F Thru hole Bi-color CBI

Part Numbers with the "F" suffix ending are RoHS Compliant.
 Example: 551-3307F
 The bag packaging is marked with "RoHS Compliant" label or equivalent markings.
 Parts can be wave soldered, dip soldered or hand soldered using typical lead-free soldering process with max 260°C temp. for 5 sec.



ATTENTION:
 OBSERVE PRECAUTIONS FOR
 HANDLING ELECTROSTATIC
 SENSITIVE DEVICES

THIS DRAWING AND THE CONTENTS HEREIN ARE CONFIDENTIAL AND THE SOLE PROPERTY OF DIALIGHT CORP. REPRODUCTION OF THIS DRAWING OR CONSTRUCTION OF ANY PARTS WITHIN THIS DRAWING ARE FORBIDDEN WITHOUT THE WRITTEN CONSENT OF DIALIGHT CORP.		
SCALE: DRAWING SCALE	DRAWING NUMBER	REV
ALL DIM'S: INCH (mm)	C-17342	C
TOLERANCES: UNLESS OTHERWISE SPECIFIED	TITLE 3mm LED CBI .200" HIGH ϕ , B/G BI-COLOR	
FRACTIONS: $\pm 1/64$ DECIMALS (.XX): $\pm .01$ DECIMALS (.XXX): $\pm .005$ DECIMALS (.XXXX): $\pm .0005$ ANGLES: $\pm 1^\circ$	MATERIAL	
FINISH	 1501 ROUTE 34 SOUTH FARMINGDALE, NJ 07727 (732) 919-3119 www.dialight.com	
FSCM 83330	SHEET 11 OF 11	FAMILY TABLE: