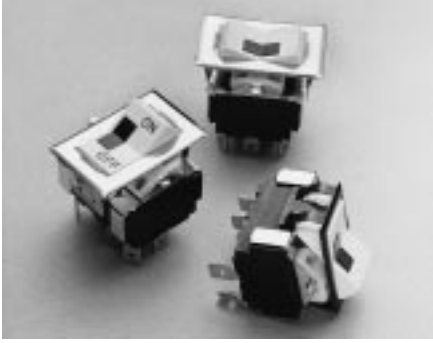


LTIH-Series



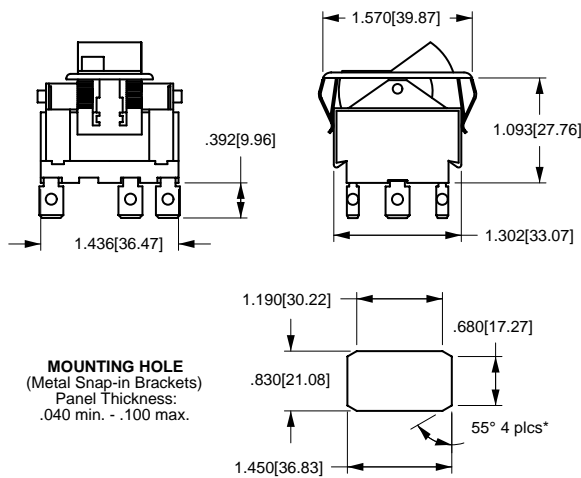
The LTIH-Series Tippetto rocker switches are lighted, three-pole and AC rated up to 15 amps. A variety of circuits, colors, terminations and lamp voltages are available.

Specifications

- Certifications*: UL, CSA
- Dielectric Strength: 1,000V (minimum)
- Insulation Resistance: 100 Megohms (minimum)
- Base Material: Phenolic
- Actuator Material: Nylon
- Bezel Material: Steel

* Due to ongoing technological advances, consult factory for certification specifics.

Dimensional Specifications: in. [mm]



SOLDER LUG	.250 TAB (Q.C.)	.187 TAB (Q.C.)
TERMINAL TYPE		
SCREW (ASSEMBLED)	WIRE LEAD	PRINTED CIRCUIT

* Angled corners are suggested for optimum fit. Standard rectangular cutout is acceptable.

LTIH K 5 1 - 1S - BL - RC - FN / 125N

SERIES

LTIH THREE POLE IN A FOUR POLE BASE LIGHTED

CIRCUIT

K ON-NONE-OFF
L ON-NONE-ON
M ON-OFF-ON

NOTES:

Shading indicates standard configurations.
Panel Cut-Out Recommendations: For sheet metal panels, switch must enter panel in same direction as the punch. (Burr on bottom.) Test cut hole in actual material.

- Imprinting available on smooth face rockers. Other actuator styles available. Consult factory.
- Custom colors are available. Consult factory.
- Green and blue not recommended with 125 volt or / 250 volt neon lamps.
For two different color lenses, please specify when ordering lens color. (ex.) RC/GN
Split lenses available. Please specify when choosing lens. (ex.) RC/GN
- Bracket Styles D, E, and G available. Supplied with double brackets.
Barbs are available on FN style bracket to accommodate panel thickness of .062, .100, .125, .156 & .250. Specify after bracket selection. (ex.) FN/125
Standard FN and FW brackets are nickel. FN brackets are available in stainless steel, chrome and black oxide. FW brackets are available in chrome and black oxide. Please specify when ordering.

RATING

5 10A 250VAC
15A 125VAC
1/2HP 125-250VAC
1, 2 OR 3 PHASE
6 3A 250VAC
6A 125VAC
1/4HP 125-250VAC

ACTUATOR STYLE¹

1C CROSS SERRATED
1L LONG LINED
1S SMOOTH ANGLED

ACTUATOR COLOR²

BL BLACK
WH WHITE

LENS COLOR³

AM AMBER
CL CLEAR
GN GREEN
LU BLUE
RC RED
WH WHITE

BRACKET STYLE⁴

A
C
FN NARROW
FW WIDE

LAMP VOLTAGE

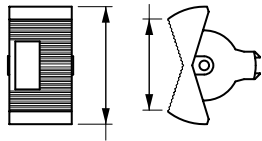
NEON
125N 125 VOLT
250N 250 VOLT

INCANDESCENT
6V 6 VOLT
12V 12 VOLT
18V 18 VOLT
24V 24 VOLT
28V 28 VOLT

TERMINATION/FUNCTION

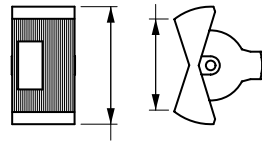
FUNCTION	SOLDER LUG	.250 TAB (QC)	.187 TAB (QC)	SCREW TERM.	WIRE LEAD	PC LEAD TERM.
ON-NONE-OFF	0	1	3	4	5	6
(ON)-NONE-OFF	A	B	D	E	F	G
ON-NONE-(OFF)	L	M	R	S	T	U
ON-NONE-ON	0	1	3	4	5	6
ON-NONE-(ON)	A	B	D	E	F	G
ON-OFF-ON	0	1	3	4	5	6
ON-OFF-(ON)	A	B	D	E	F	G
(ON)-OFF-(ON)	L	M	R	S	T	U

Actuator Style/Dimensions: in. [mm]



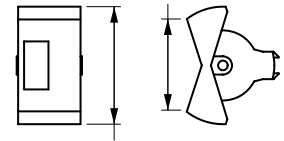
1.224[31.08]

1C
CROSS-LINE W/ONE LENS



1.224[31.08]

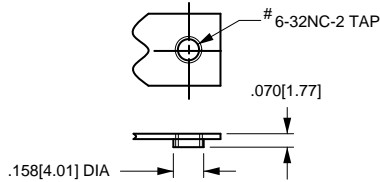
1L
LONG-LINE W/ONE LENS



1.224[31.08]

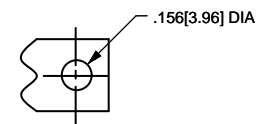
1S
SMOOTH W/ONE LENS

Bracket Dimensions: in. [mm]



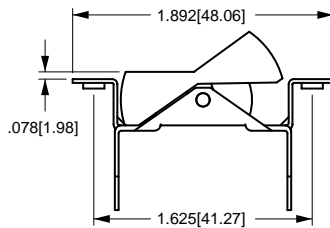
TAPPED HOLE

Standard with
A Bracket

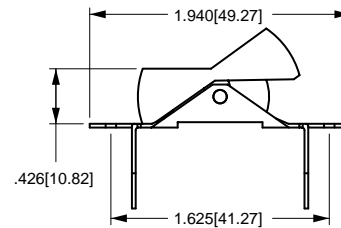


CLEARANCE HOLE

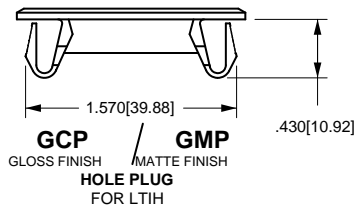
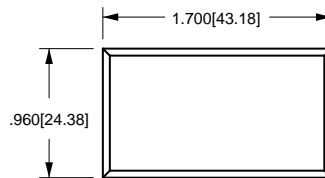
Standard with
C Bracket



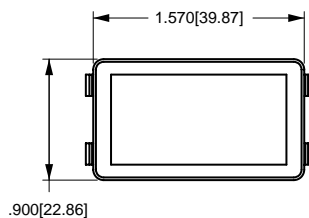
A



C

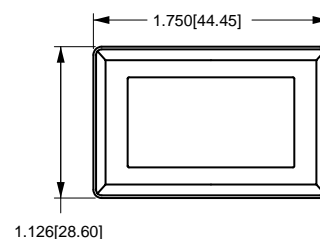


NARROW



FN
METAL, SNAP-IN

WIDE



1.126[28.60] **FW**
METAL, SNAP-IN