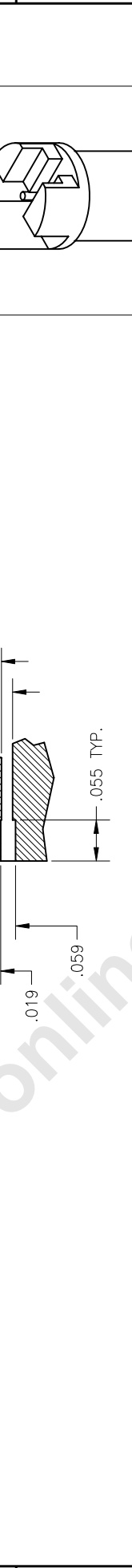


P/N	APPLICABLE NOTE(S)	(Ø A)	INTERFACE(S)	FIGURE(S)
-1CC	1,2,3	(.116)	FULL DETENT	1
-2CC	1,2,3	(.120)	LIMITED DETENT	1
-3CC	1,2,3	(.125)	SMOOTH BORE	1
-4CC	1,2,3	(.125)	CATCHERS MITT	2

ZONE	REV	DESCRIPTION	DATE	BY
-	E	ECO 12864	03/05/01	HDB
-	F	ECO 17650 (ADD -4CC)	11.12.04	DKN
-	G	ECO 21365	06.16.08	DKN



RECOMMENDED PCB MOUNTING PATTERN



4. DIMENSIONS SHOWN ARE FOR ROGERS 4350 PCB MATERIAL. THESE DIMENSIONS MAY VARY DEPENDING ON PCB MATERIAL USED.

MATERIAL:
Body & Center Conductor: BeCu alloy per ASTM B-196.
Dielectric: PTFE per ASTM D-1710.

ELECTRICAL:
Impedance: 50 Ohms nominal.
Frequency Range: DC to 18.0 GHz.
VSWR: 1.06 + .005 x f(GHz).
Insertion Loss: .10 dB max to 18.0 GHz.
Working Voltage: 600 Vrms max @ sea level.
Dielectric Withstanding Voltage: 500 Vrms min.
R.F. HiPot Voltage: 325 Vrms min @ 5MHz.
Corona Level: 190 Vrms @ 70,000 ft.
Insulation Resistance: 5000 MegOhms min.
Contact Resistance:
Center Contact: 4.0 Milliohm max.
Outer Contact: 2.0 Milliohm max.
R.F. Leakage: -80 dB max to 3.0 GHz
-60 dB max to 18.0 GHz

MECHANICAL:
Mating Characteristics: Interface per Mil-Std-348.
Force to Engage and Disengage:
Engage 5 lbs min
Disengage 10 lbs max
Limited Detent: 8 lbs max
2 lbs min
Smooth Bore: 2 lbs max
.5 lbs min
Center Contact Retention:
Axial Force: 1.5 pounds min.
Note: 10 lbs min. when c/c is solder-on to PCB
Radial Torque: NA
Connector Durability: 100 Cycles
Full detent: 500 Cycles
Limited Detent: 500 Cycles
Smooth Bore: 1000 Cycles
Connector Attachment Strength: 20 lbs max (depend on the solder techniques)

ENVIRONMENTAL:
Temperature Range: -65°C to +165°C.
Thermal Shock: Mil-Std-202, Method 107, Test Cond. C.
Moisture Resistance: Mil-Std-202, Method 106, except step 7b shall be omitted. Insulation resistance at least 1000 MegOhms within 5 minutes after removal from humidity.
Corrosion: Mil-Std-202, Method 101, Test Cond. B.
Vibration: Mil-Std-202, Method 204, Test Cond. D.
Shock: Mil-Std-202, Method 213, Test Cond. I.

FINISH:
Body & Center Conductor: Gold plate per ASTM B-488, over nickel under plate per AMS-QQ-N-290.

WORK STD	PROD INST	ASSY INST
NA	NA	NA

TOLERANCES AND NOTES AS NOTED
DIMENSIONS ARE IN INCHES
LINEAR .XX ±.015 ANGULAR ± 1/2°
FRACTION 1/32
1. MACHINE FINISH: RISE
2. BREAK ALL SHARP EDGES .005 MAX.
3. MACHINED FILLETS .005 MAX.
4. MACHINED SURFACES SQUARE TO RESPECTIVE DIMENSIONS UNLESS OTHERWISE SPECIFIED.
5. MACHINED DIAMETERS CONCENTRIC WITH DIMENSIONS TO BE MET BEFORE PLATING.
6. DIMENSIONS TO BE MET BEFORE PLATING.
7. DIMENSIONS TO BE MET AFTER PLATING.
8. DIMENSIONS TO BE MET AFTER PLATING.
9. REMOVE TRAPPED EDGES ON TELON.
10. REMOVE ALL BORES.

NOTICE
THIS DRAWING EMBODIES A CONFIDENTIAL PROPRIETARY DESIGN ORIGINATED BY TENSOLITE COMPANY AND ALL DESIGN, MANUFACTURING AND PROCESSING INFORMATION IS CONSIDERED CONFIDENTIAL. EXPRESSLY RESERVED. IT IS SUBMITTED UNDER A CONFIDENTIALITY AGREEMENT AND IS NOT TO BE REPRODUCED, COPIED, OR DISCLOSED IN ANY MANNER WITHOUT THE WRITTEN PERMISSION OF TENSOLITE COMPANY. ANY INFORMATION CONTAINED HEREIN IS UNCLASSIFIED AND SPECIALLY MARKED FOR RELEASE TO THE DESIGN. ALL PATENT RIGHTS HERETO ARE EXPRESSLY RESERVED BY TENSOLITE COMPANY, LONG BEACH, CALIFORNIA 90815.

APPROVAL INITIALS	DATE	PROCUREMENT
ATV	06.03.99	HIGH PERFORMANCE CABLES & INTERCONNECT SYSTEMS Long Beach, California 90815

TITLE SMP MALE PCB EDGE MOUNT TO STRAIGHT TERMINATION
SCALE 10:1
SIZE CASE CODE OLPXXXX\OLP698
REV. SHEET 1 OF 2
DRAWING NO. P698

APPLICABLE TENSOLITE DOCUMENTS

ENVIRONMENTAL:
Temperature Range: -65°C to +165°C.
Thermal Shock: Mil-Std-202, Method 107, Test Cond. C.
Moisture Resistance: Mil-Std-202, Method 106, except step 7b shall be omitted. Insulation resistance at least 1000 MegOhms within 5 minutes after removal from humidity.
Corrosion: Mil-Std-202, Method 101, Test Cond. B.
Vibration: Mil-Std-202, Method 204, Test Cond. D.
Shock: Mil-Std-202, Method 213, Test Cond. I.

MECHANICAL:
Mating Characteristics: Interface per Mil-Std-348.
Force to Engage and Disengage:
Engage 5 lbs min
Disengage 10 lbs max
Limited Detent: 8 lbs max
2 lbs min
Smooth Bore: 2 lbs max
.5 lbs min
Center Contact Retention:
Axial Force: 1.5 pounds min.
Note: 10 lbs min. when c/c is solder-on to PCB
Radial Torque: NA
Connector Durability: 100 Cycles
Full detent: 500 Cycles
Limited Detent: 500 Cycles
Smooth Bore: 1000 Cycles
Connector Attachment Strength: 20 lbs max (depend on the solder techniques)

ENVIRONMENTAL:
Temperature Range: -65°C to +165°C.
Thermal Shock: Mil-Std-202, Method 107, Test Cond. C.
Moisture Resistance: Mil-Std-202, Method 106, except step 7b shall be omitted. Insulation resistance at least 1000 MegOhms within 5 minutes after removal from humidity.
Corrosion: Mil-Std-202, Method 101, Test Cond. B.
Vibration: Mil-Std-202, Method 204, Test Cond. D.
Shock: Mil-Std-202, Method 213, Test Cond. I.

ZONE	REV	DESCRIPTION	DATE	BY
-	E	ECO 12864	03/05/01	HDB
-	F	ECO 17650 (ADD -4CC)	11.12.04	DKN
-	G	ECO 21365	06.16.08	DKN



ENG-DWG REV. B 4

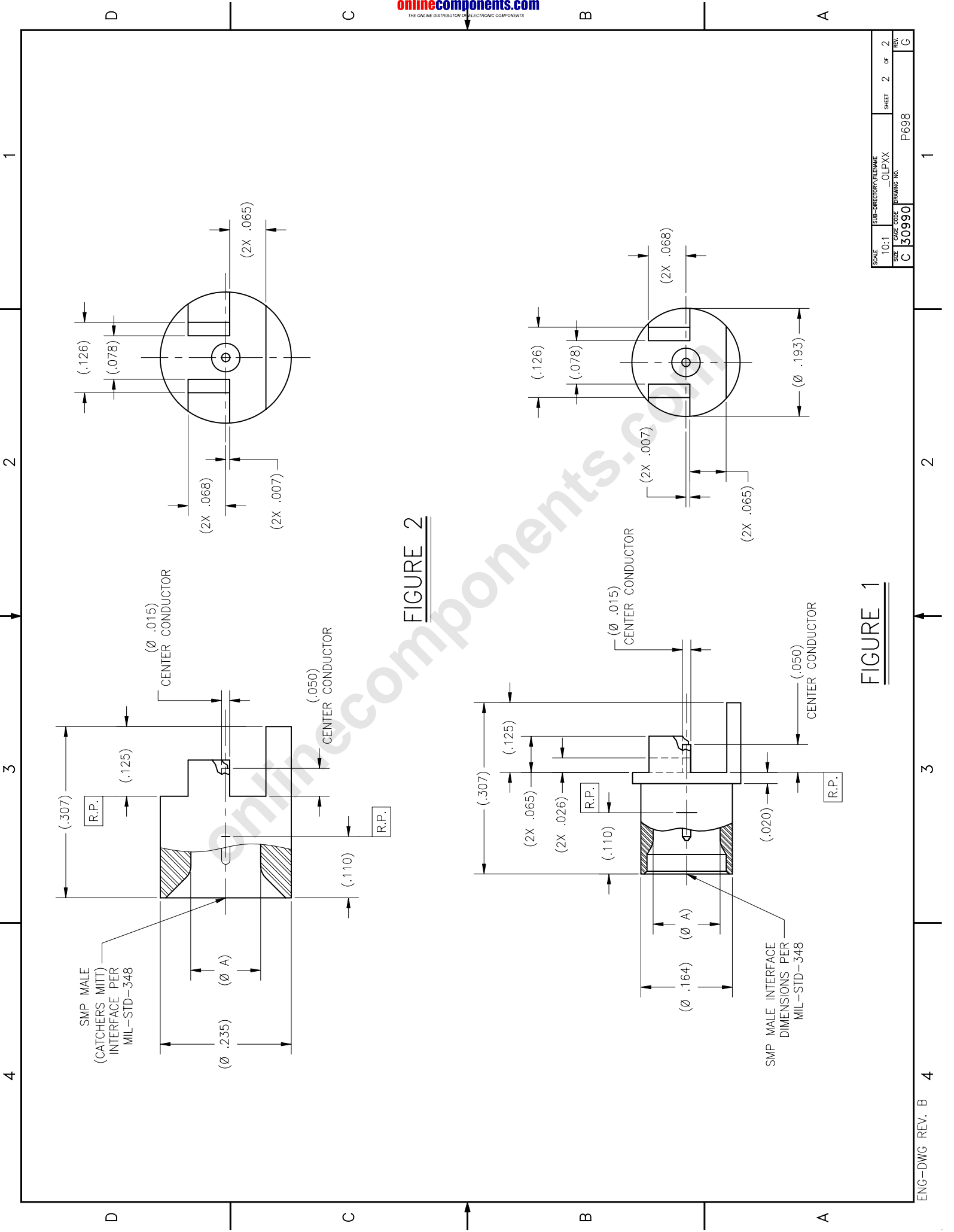


FIGURE 2

FIGURE 1

SCALE	SUB-DIRECTORY/FILENAME	SHEET	2	OF	2
10:1	_OLPXX				
SIZE	CAGE CODE	DRAWING NO.	P698		
C	30990		REV. G		