

# EAS, EBS Series

Snap-in  
Compact RFI Filter  
IEC Connector Package



UL Recognized  
CSA Certified  
VDE Approved

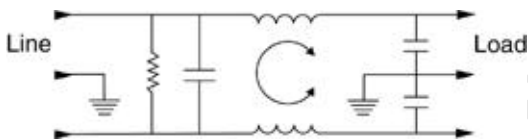
## EAS Series

This filter offers the performance characteristics of the EEA susceptibility filter with the additional advantage of a snap-in panel mount. The EAS series supersedes the EF series by providing superior performance, particularly in the common mode at low frequencies.

## EBS Series

This filter offers the performance characteristics of the EEB susceptibility filter with the additional advantage of a snap-in panel mount. The EBS provides enhanced differential mode performance compared to both the EAS and EF series.

## Electrical Schematic



Resistor location for reference only.



## Specifications

Maximum leakage current, each  
line-to-ground @ 120 VAC 60 Hz: .22mA  
@ 250 VAC 50 Hz: .38mA

Hipot rating (one minute):  
line-to-ground 1500 VAC  
line-to-line 1450 VDC

Operating frequency: 50/60 Hz  
Rated voltage: 120/250 VAC

### Minimum insertion loss in dB:

#### EAS

Line-to-ground in 50 ohm circuit

Current Rating	Frequency-MHz								
	.01	.05	.1	.15	.5	1	5	10	30
1A	12	23	29	32	41	47	47	47	40
3A	-	10	15	19	30	36	48	50	47
6A	-	1	4	10	22	28	42	48	47
10A	-	1	3	5	14	20	32	38	47
15A	-	-	-	1	5	8	20	26	40

Line-to-line in 50 ohm circuit

Current Rating	Frequency-MHz						
	.5	1	1.5	3	5	10	30
1A	1	9	19	32	42	45	40
3A	2	4	6	20	35	45	40
6A	2	4	6	6	24	40	40
10A	1	4	5	5	5	30	40
15A	1	4	6	12	14	15	40

#### EBS

Line-to-ground in 50 ohm circuit

Current Rating	Frequency-MHz								
	.01	.05	.1	.15	.5	1	5	10	30
1A	12	23	29	32	41	47	47	47	40
3A	-	10	14	18	30	36	48	50	47
6A	-	1	4	10	22	28	42	48	47
10A	-	1	3	5	14	20	32	38	47
15A	-	-	-	1	5	8	20	26	40

Line-to-line in 50 ohm circuit

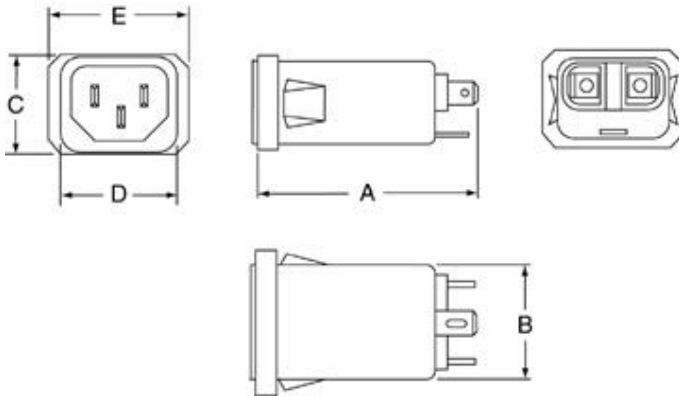
Current Rating	Frequency-MHz							
	.01	.15	.5	1	3	5	10	30
1A	1	3	14	23	41	47	50	44
3A	1	2	11	14	25	38	44	40
6A	1	2	10	14	20	33	42	40
10A	1	2	10	16	19	19	39	40
15A	-	2	10	16	24	28	28	40

# Series EAS, EBS

## Case Style

Metric shown in italics.

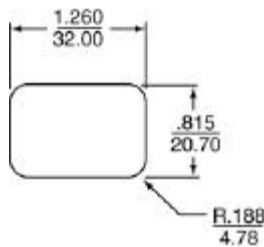
### EAS1/EBS1



Typical dimensions

Terminals:  $\frac{.25}{6.35}$  (3) Holes:  $\frac{.07}{1.8}$  Dia.(2) Slots:  $\frac{.07 \times .16}{1.8 \times 4.1}$

## Recommended Panel Cutout



Front Mount Only  
Panel Thickness .031" - .047"  
(.78 mm - 1.19 mm)

## Case Dimensions

Metric shown in italics.

Part No.	A (max)	B (max)	C (max)	D $\pm .010$ $\pm .25$	E (max)
EAS1	$\frac{2.2}{55.88}$	$\frac{1.15}{29.2}$	$\frac{.9}{22.86}$	$\frac{1.185}{30.1}$	$\frac{1.35}{34.21}$
EBS1	$\frac{2.2}{55.88}$	$\frac{1.15}{29.2}$	$\frac{.9}{22.86}$	$\frac{1.185}{30.1}$	$\frac{1.35}{34.21}$

## Ordering Information

Consult your local Corcom sales representative for pricing.

3 E A S 1	
Current Rating (1, 3, 6, 10, 15A)	Terminal Type 1 - Straight 1/4" quick-connect
Series	
EAS - General purpose snap-in mount filter	
EBS - Enhanced differential mode performance (snap-in mount)	

## Available Part Numbers

1EAS1	1EBS1
3EAS1	3EBS1
6EAS1	6EBS1
10EAS1	10EBS1
15EAS1	15EBS1

## Accessory Line Cord No. GA400

7 1/2 foot, 3 conductor line cord to mate with filter IEC input connector. 1250 watt, 10A-125 VAC, black SVT cord, UL listed, CSA certified

## Accessory Insulating Boot No. FA601

Plastic shroud to cover terminals on back of filter (style 1 terminals only)