

D see data sheet cable

Technical specification:

Rated voltage: IEC 61076-2-101	160 V
Current rating: IEC 61076-2-101	4 A at 40°C
Insulation resistance: IEC 60512	>=100 MΩ
Pollution degree: IEC 60664-1	3/2
Degree of protection: IEC 60529	IP 67, in mated condition
Temperature range:	-30°C ... +80°C
Mating cycles: IEC 60512-9a	>=100

Materials:

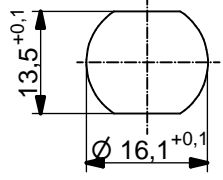
Contact:	CuZn
Contact plating:	Nickel, gold plated
Contact carrier:	PBT GF, UL 94
Sealing:	FPM
Counternut:	CuZn, nickel plated
Socket housing:	CuZn, nickel plated

Installation specification:

Recommended torque:	1-1,2 Nm
Conec installation tool:	Torque wrench: 36-000200 Insert across flats 19: 36-000250

Contact assignment:

1	■	brown
2	■	white
3	■	blue
4	■	black



Minimum wall thickness 1,5mm, alternativ panel cut-out d=16,1

shield connection
flange housing

Part no:	Description:	Length L:	Cable:
43-02309	SAL - 12S - FSH4 - 0,5 / G3	0,5m	PVC, grey, 4x0,25mm ² flexible installation cable: 781-G32400
43-02351	SAL - 12S - FSH4 - 1 / G3	1m	
43-02352	SAL - 12S - FSH4 - 2 / G3	2m	
43-xxxxx	SAL - 12S - FSH4 - ... / G3	x	

DO NOT ALTER CAD DRAWING BY HAND Directive 2002/95/EC RoHS compliant	dim. in mm	title: Male socket M12x1 with cable, backmounting								
	<table border="1" style="font-size: 8px;"> <tr> <td></td> <td>date</td> <td>name</td> </tr> <tr> <td>drawn</td> <td>11.09.13</td> <td>Brüntrup</td> </tr> <tr> <td>appd.</td> <td>11.09.13</td> <td>Fromm</td> </tr> </table>				date	name	drawn	11.09.13	Brüntrup	appd.
		date	name							
	drawn	11.09.13	Brüntrup							
appd.	11.09.13	Fromm								
tolerance of cable: L ≤ 4m: L + 40mm L > 4m: L + 1%	dwg no: 43K1A2164									
general tolerance: 0 ± 0,50mm 0,0 ± 0,25mm 0,00 ± 0,10mm										
THIS DRAWING MAY NOT BE COPIED OR REPRODUCED IN ANY WAY, AND MAY NOT BE PASSED ON TO A THIRD PARTY WITHOUT WRITTEN PERMISSION. OWNERSHIP AND COPYRIGHT OF CONEC GmbH		part no: see table								