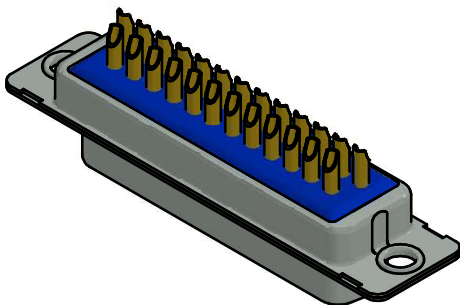
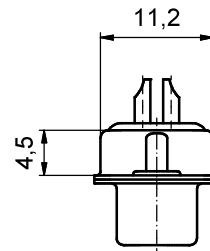
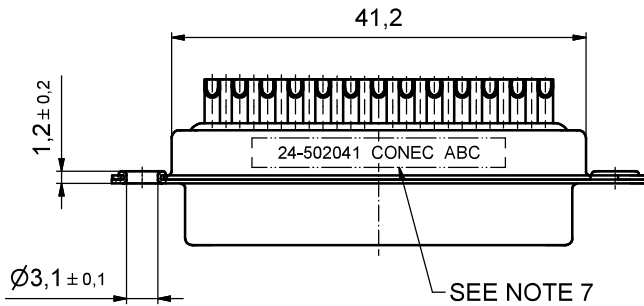
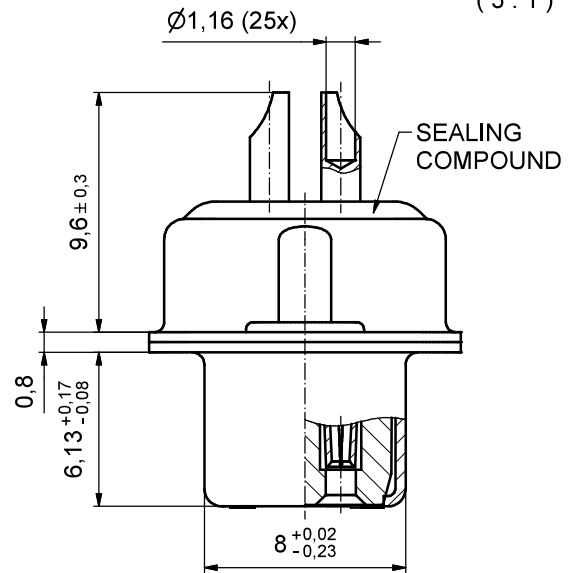
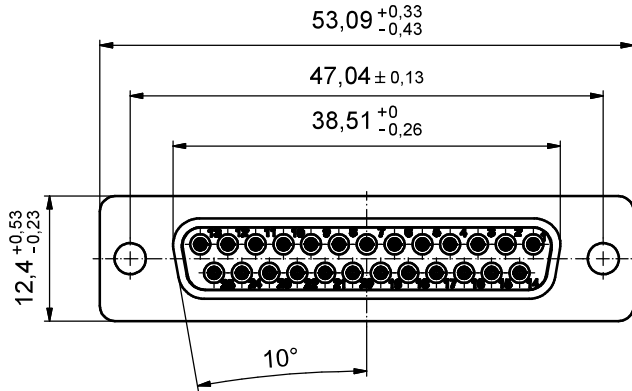


**Solder Instruction**

1. Cable should be prepared for soldering. The cable/wires must be pretinned.
2. Insert cable/wire into solder cup
3. Operate the soldering iron at 350°C, 50 Watt max. and use a pencil tip.
4. Apply some solder to the solder tip of the soldering iron.
5. Put tip to wire in solder cup
6. After 1 second bring in solder.
7. Heat for 3 seconds longer. Do not heat contact more than 6 seconds in total.
8. Remove soldering iron.
9. Wait until solder gets rigid again.
10. Do not solder adjacent contacts consecutively, alternate position within the connector to minimize heat build up.

(5 : 1)



**NOTES:**

1. METALSHELLS: STEEL; min. 315µm TIN over 40-80µm NICKEL
2. INSULATOR: HIGH TEMPERATURE PLASTIC UL 94 V-0; BLACK
3. CONTACTS: COPPER ALLOY  
PLATING: 30µm HARD GOLD over min. 50µm NICKEL  
SOLDER CUP ACCEPTS CABLE AWG 20
4. SEALING COMPOUND: PUR; BLUE
5. CAPACITANCE: 1000 pF ± 20%
6. WORKING VOLTAGE: 100 VDC
7. CONNECTOR IS PART MARKED: 24-502041 CONEC ABC

RoHS compliant

THIS DRAWING MAY NOT BE COPIED OR REPRODUCED IN ANY WAY, AND MAY NOT BE PASSED ON TO A THIRD PARTY WITHOUT WRITTEN PERMISSION. OWNERSHIP AND COPYRIGHT OF CONEC GmbH DO NOT ALTER CAD DRAWING BY HAND	Customer Specific Product		tolerance		dim. in mm	scale: 2:1 (5:1)	
	Capacitance 1000 pF					material: SEE NOTES	
	date	name		title: <b>D-SUB FILTER FEMALE</b> 25pos. SOLDER CUP			
	drawn	20,05,2016	Lehmenkühler				
	appd.	23,05,2016	Fischer				
	norm			dwg no:			
	d-old			24K1A1690			
a	Original						
rev.	description	date	name	part no:		DIN-A3 sh: 1	
				24-502041			