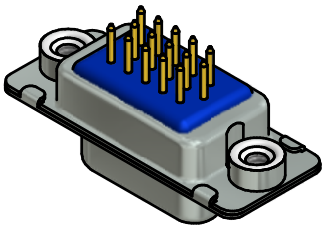
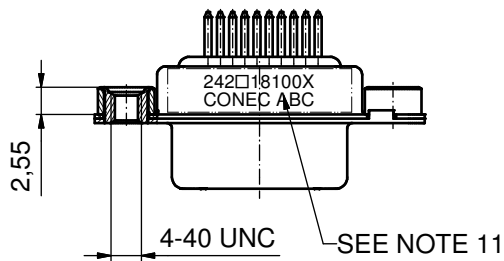
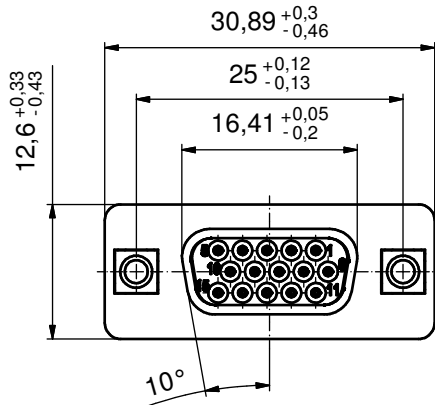
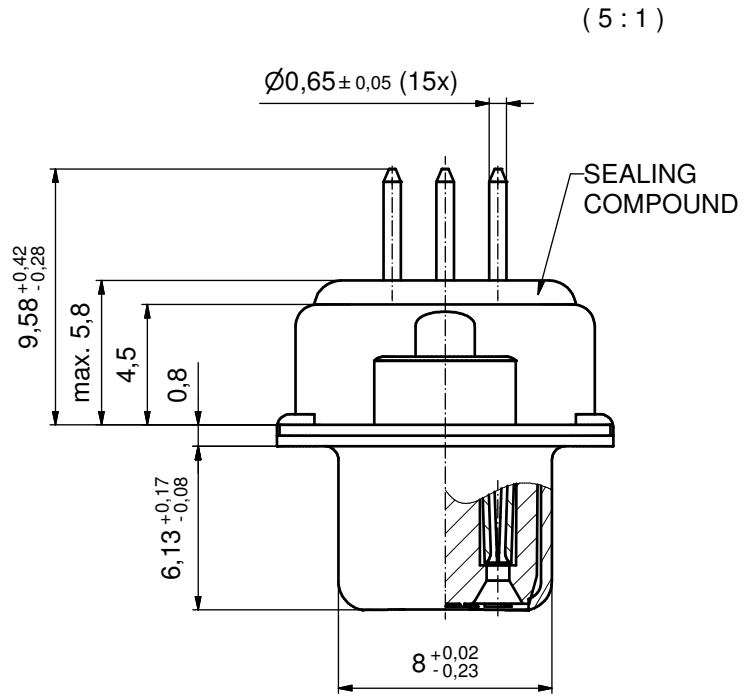


P.C.B. HOLE DRILLINGS
 (P.C.B. TOP SIDE)



- NOTES: (b)
- FOR WAVESOLDERING (SOLDER BATH TEMPERATURE 260°C FOR 5 SEC. AND SOLDER PREHEAT 100°C FOR 30 SEC.)
 - METALSHELLS: STEEL; min. 315µm TIN over 40-80µm NICKEL
 - INSULATOR: HIGH TEMPERATURE PLASTIC UL 94 V-0; BLACK
 - CONTACTS: COPPER ALLOY; PLATING (SEE PART NO.):
 PLEASE ADD A for GOLD FLASH over NICKEL (PREFERRED TYPE)
 PLEASE ADD B for 20µm HARD GOLD over min. 50µm NICKEL
 PLEASE ADD C for 30µm HARD GOLD over min. 50µm NICKEL
 CONTACT TAILS PRETINNED
 - THREADED INSERTS: COPPER ALLOY; min. 200µm TIN over 80µm NICKEL
 - COLLARS: COPPER ALLOY; min 200µm TIN over 80µm NICKEL
 - SEALING COMPOUND: PUR; BLUE
 - DIELECTRIC WITHSTANDING VOLTAGE: 300 VDC
 - CAPACITANCE: 830pF ± 20%
 - MAXIMUM TORQUE VALUE FOR THREAD: 6 in.LB
 - CONNECTOR IS PART MARKED: 242□18100X CONEC ABC (see note 4)

RoHS compliant

THIS DRAWING MAY NOT BE COPIED OR REPRODUCED IN ANY WAY, AND MAY NOT BE PASSED ON TO A THIRD PARTY WITHOUT WRITTEN PERMISSION. OWNERSHIP AND COPYRIGHT OF CONEC GmbH DO NOT ALTER CAD DRAWING BY HAND	tolerance		dim. in mm		scale: 2:1 (5:1)	
					material: SEE NOTES	
			date		title:	
			name		D-SUB HD C-FILTER FEMALE	
			drawn 13.05.16 Henneboel		15pos. SOLDER PIN STRAIGHT	
		appd. 13.05.16 Lehmenkühler		with threaded insert		
		norm		dwg no:		
		d-old		24K1A737		
2 x b		Ä6127	13.05.2016	K.H.	DIN-A3	
a		Original			sh: 1	
rev. description		date	name			part no: (b) 242□18100X (see note 4)