

**Technical specification/
Technische Daten:**

Working voltage/ Betriebsspannung: IEC 664-1	100 VDC
Current rating/ Strombelastbarkeit:	7,5 A (UL) / 5 A (CSA, VDE)
Insulation resistance/ Isolationswiderstand:	≥ 1 GΩ
Dielectric withstanding voltage/ Spannungsfestigkeit (DWV):	424 VDC
Temperature working range/ Umgebungstemperatur:	- 25 °C ... + 105 °C
Capacitance value/ Kapazitätswert:	1300 pF ± 20 %
Mating cycles/ Steckzyklen:	Quality class 1 = 500 Gütestufe 1 Quality class 2 = 200 Gütestufe 2 Quality class 3 = 50 Gütestufe 3

**Materials/
Werkstoffe:**

Contact/ Kontakt:	Cu alloy, Au over Ni Contact tails pretinned/ Kontaktspitzen verzinkt
Insulator/ Isolierkörper:	High temp. PA UL 94 V-0
Shell/ Gehäuse:	Steel, Sn over Ni

**Installation specification/
Montagedaten:**

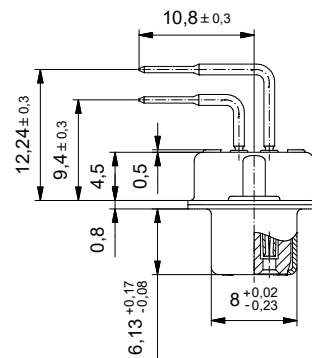
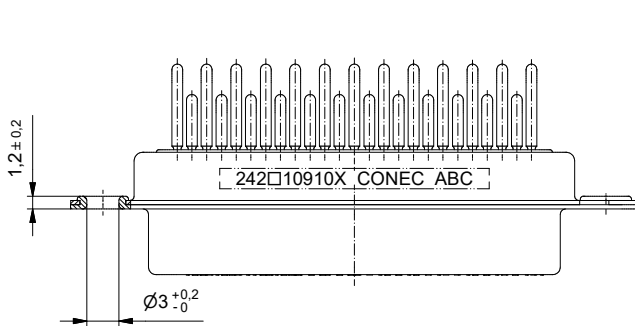
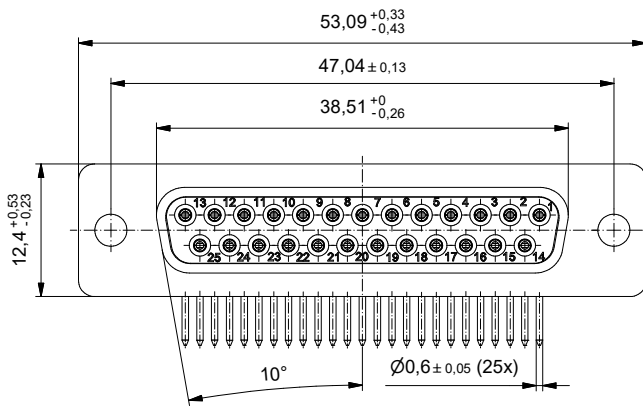
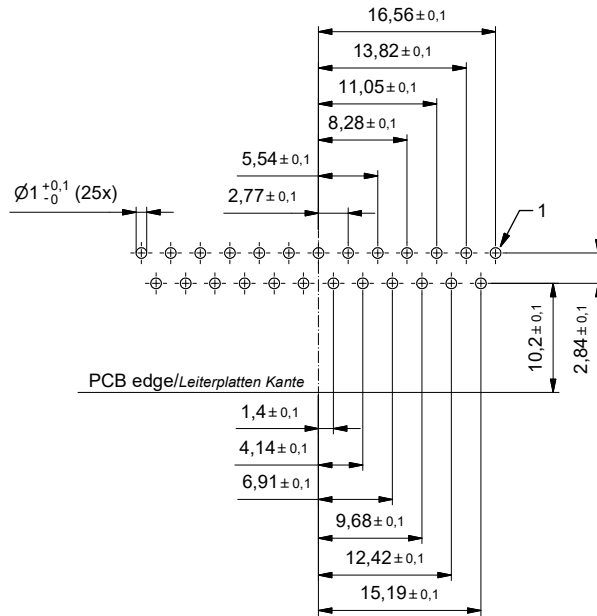
Solder parameter/ Lötparameter:	
Solder preheat temperature/ Vorheiztemperatur:	100 °C for 30 sec./ 100 °C für 30 Sek.
Solder bath temperature/ Lötbadtemperatur:	260 °C for 5 sec./ 260 °C für 5 Sek.
PCB hole drillings/ Leiterplattenbohrbild:	see sheet 2/ siehe Seite 2

Part no. / Part marked/ Art.-Nr. / Bedruckung:	Quality class/ Gütestufe:	Contact plating/ Kontakt Veredelung:
242A10910X	3	Gold flash over nickel Gold über Nickel
242B10910X	2	20 µin hard gold over min. 50 µin nickel 20 µin Gold über min. 50 µin Nickel
242C10910X	1	30 µin hard gold over min. 50 µin nickel 30 µin Gold über min. 50 µin Nickel

dim. in mm		D-SUB C-Filter Female 25 pos. solder pin angled 0.370 inch	
		D-SUB C-Filter Buchse 25 pol. Lötstift abgewinkelt 9,4 mm	
		dwg no / Z.-nr.: 24K1A1838	
Index: a Original	Scale/Maßstab: 2:1 	DIN-A3	
Status: InBearbeitung		1 / 2	
RoHS compliant/konform			

The reproduction, distribution and sale of this document as well as the communication of its contents to others without express authorization is prohibited. Offenders will be held liable for the payment of damages. We reserve the right to withdraw advertising and/or to discontinue the supply of goods without notice.

PCB hole drillings
(PCB top side)
Leiterplattenbohrbild
(Leiterplatten Oberseite)



The reproduction, distribution and utilization of this document as well as the communication of its contents to others without express authorization is prohibited. Offenders will be held liable for the payment of damages. For further information on copyright law please contact the copyright holder. All rights reserved. © 2018 CONEC GmbH, Germany. www.conec.com

		dim. in mm		D-SUB C-Filter Female 25 pos. solder pin angled 0.370 inch							
		<table border="1" style="font-size: small;"> <tr> <th>Date/Datum</th> <th>Name</th> </tr> <tr> <td>drawn/ges.</td> <td>08.10.2018 Lehmenkühler</td> </tr> <tr> <td>appd./gepr.</td> <td>08.10.2018 Schmidt</td> </tr> </table>		Date/Datum	Name	drawn/ges.	08.10.2018 Lehmenkühler	appd./gepr.	08.10.2018 Schmidt	D-SUB C-Filter Buchse 25 pol. Lötstift abgewinkelt 9,4 mm	
Date/Datum	Name										
drawn/ges.	08.10.2018 Lehmenkühler										
appd./gepr.	08.10.2018 Schmidt										
Index: a Original	Scale/Maßstab: 2:1			dwg no / Z.-nr.: 24K1A1838	DIN-A3						
Status: InBearbeitung					2 / 2						
RoHS compliant/konform											