

NEW

PTS845 Series 4.5x3.4mm SMT Side Actuated Tact

Features/Benefits

- 4.5 x 3.4 x 3.3 mm package
- SMT termination
- Side actuated with bracket peg design
- 80, 160 & 260 gf versions
- Lifecycles 100K

Typical Applications

- Headphone/ Headset
- Health monitoring
- Sports watch
- Black box
- Bluetooth accessory

**B****Tactile Switches**

Specifications

FUNCTION: momentary action
 CONTACT ARRANGEMENT: 1 make contact = SPST N.O.
 TERMINALS: SMT termination
 TRAVEL: 0.2 mm ± 0.1 mm
 LIFE: 100,000 cycles

Electrical

MAXIMUM VOLTAGE: 12 VDC
 MAXIMUM CURRENT DC: 50 mA
 CONTACT RESISTANCE: 100 mΩ
 INSULATION RESISTANCE: 100 MΩ min.
 DIELECTRIC VOLTAGE: 10 mA

Environmental

OPERATING TEMPERATURE: -40°C to 90°C
 STORAGE TEMPERATURE: -30°C to 80°C

Process

SOLDERING: This component is suited to the following methods:
 Infrared Reflow Soldering in accordance with IEC61760-1

Packaging

2,000 pieces per reel

How To Order

Please see chart below for full part numbers.

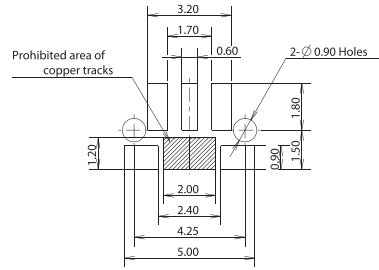
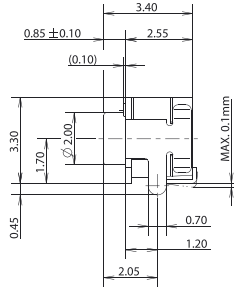
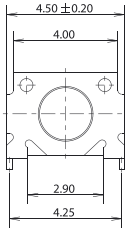
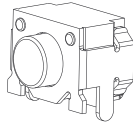
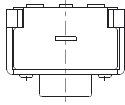
Type	Operating Force (gf)	Stem Colour
PTS845VN20PSMTR4 LFS	80 ± 40	Grey
PTS845VM20PSMTR4 LFS	160 ± 50	Ivory
PTS845VK20PSMTR4 LFS	260 ± 50	Black

PTS845 Series 4.5x3.4mm SMT Side Actuated Tact

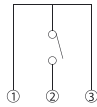
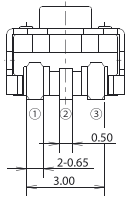
NEW

Tactile Switches

B



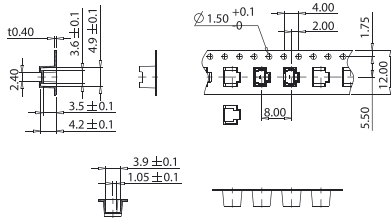
P.C.B MOUNTING SOLDER LAND DIMENSION



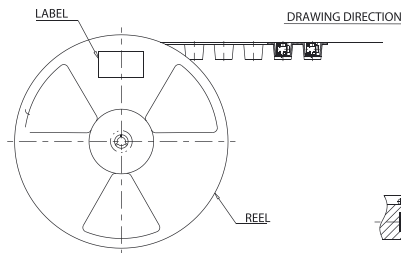
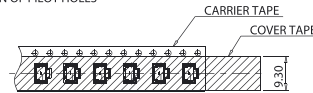
CIRCUIT DIAGRAM

TAPE & REEL

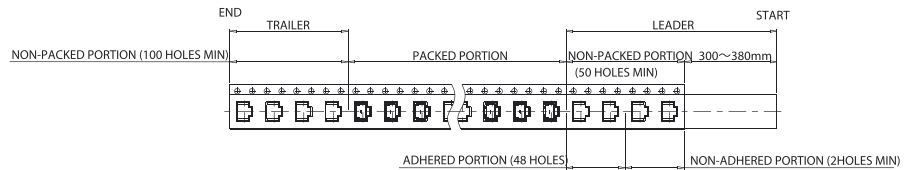
* THE DIMENSION OF CARRIER TAPE, COVER TAPE AND REEL *



* THE DIRECTION OF PILOT HOLES *



* THE SPECIFICATION FOR PACKAGING *



* END TAPE *

