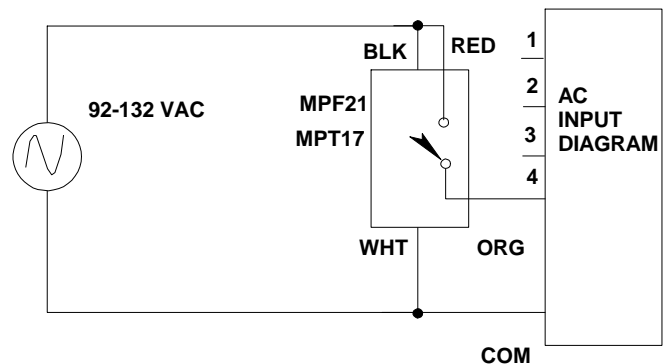
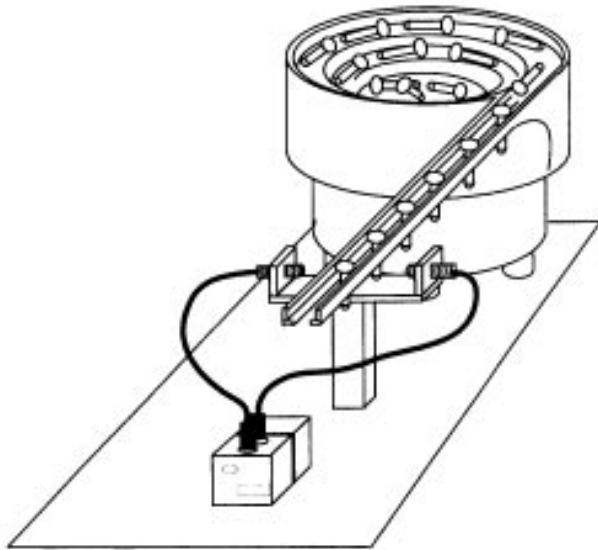


Vibratory Feed Control

PHOTOELECTRIC

AP 00133



PRODUCT

MPF2 Fiber Optic Head (Visible Red)
 MPA1 Logic/Timer Card
 MPT17 Base
 HPF-T003-H Plastic Thru Scan
 Fiber Optic Cable

APPLICATION DESCRIPTION

This application monitors a vibratory feeder system to detect if the parts have run out or a jam has occurred. If a problem of either type is detected a signal is sent to a Programmable Controller to initiate corrective action.

This is accomplished using a thru scan fiber optic system with motion detection logic. The fiber optic portion consists of the MPF2 visible red fiber optic head and FEF-PAT4-M fiber optic cables. The sensitivity is adjusted to detect the parts as they break the beam. Motion detection is done through the use of the MPA1 logic/timer card. The dip switches are set to produce an output when no motion is detected.

The timing is adjusted to allow for normal variations in part flow (gaps and delays). When a void or jam exceeds the preset time a signal is sent to a programmable controller by the MPT17 base. The MPT17 has a 4 wire AC configuration that is compatible with all AC input programmable controllers.

SIMILAR APPLICATIONS: This sensing system can be used for detecting the flow of a wide variety of small parts. The parts may be on a vibratory feeder or a small conveyor system. Product may be also detected in a diffuse mode using bifurcated fiber optic cables.