

## EX-INTERMEDIATE MOTOR TERMINAL BOXES

**up to 240 mm<sup>2</sup>**  
**Plastic version for Zone 1 and Zone 21**

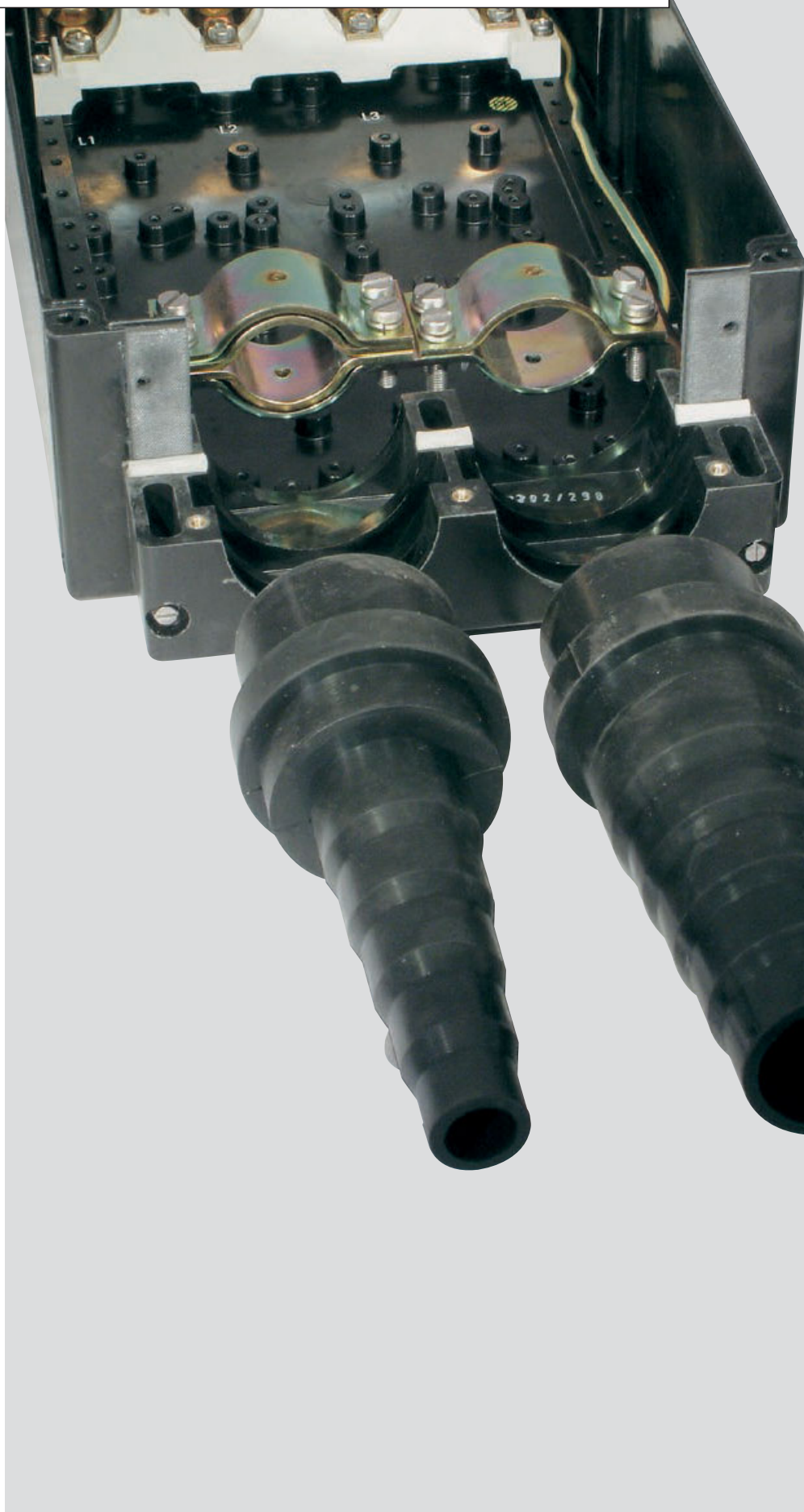
2 The CEAG connection and junction boxes are used in Zones 1, 2, 21 and 22 as junction boxes for the connection of pumps, heating, motordrives etc. in hazardous explosion endangered areas.

The connection and junction boxes are fitted with certified terminals accommodating for 240 mm<sup>2</sup> according to EN 50 019. For larger terminal cross sections, versions with terminal bolts are also used.

A special version with terminal rails accommodating for 240 mm<sup>2</sup> and a double cable end box enables the connection of larger terminal cross sections. The cable to be connected is put through the front side and is laid into the double cable terminal box where it is then connected to the terminal bolts on the copper rail.

The terminal boxes are fitted with trumpet shaped cable glands and a strain relief or just a strain relief for a flexible cable outing.

### International approvals



- Decisive cost reduction with the CEAG mounting system using junction boxes accommodating for 70 mm<sup>2</sup>
- With four cables, connections of up to 240 mm<sup>2</sup> possible
- Mechanical, chemical and thermal durability



Type 791 02

**Technical data**

Type 791 02	
Marking accd. to 2014/34/EU	⊕ II 2 G Ex e IIC T5/T6 Gb / ⊕ II 2 D Ex tb IIIC T80°C Db
EC-Type Examination Certificate	BVS 16 ATEX E 031
IECEX Certificate of Conformity	IECEX BVS 16.0024
Marking accd. to IECEx	Ex e IIC T5/T6 Gb Ex tb IIIC T80°C Db
Permissible ambient temperature	-20 °C to +40 °C / -55 C to +55 °C (option)
Rated voltage	up to 690 V
Rated current	depends on terminal mounting
Degree of protection accd. to EN 60529	IP66
Enclosure material	Polyamide
Terminal cross section	up to 6 mm <sup>2</sup>
Weight	approx. 0.7 kg

**Ordering details**

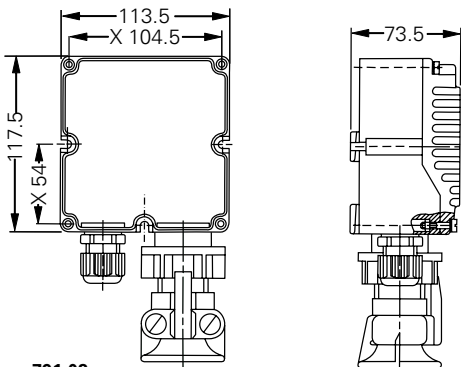
Type	Cable gland	No. of terminals	Order No.
<b>Type 791 02 assembled with screw terminals 2 x 4 mm<sup>2</sup> + 1 x PE-terminals 2 x 4 mm<sup>2</sup></b>			
Ex-e	1 x M25 cable gland 1 x M32 trumpet-shaped gland Ø 15-20 mm	4 x Ex-e 1 x PE	<b>GHG 791 0201 R0016</b>

Other versions for cable Ø 15 - 20 mm available on request.

**Accessories**

Type	Application	Fixing method	Order No.
<b>Mounting plate for intermediate motor terminal box 791 02</b>			
Size 2	Wall mounting	snap on	<b>GHG 610 1953 R0104</b>
Size 2	Trellis mounting	snap on	<b>GHG 610 1953 R0106</b>
Size 2	Pipe clamp	snap on	<b>GHG 610 1953 R0105</b>
Protective canopy size 2	for mounting plate size 2		<b>GHG 610 1955 R0102</b>

**Dimension drawing**



Type 791 02

X = fixing dimensions

## GHG 721 Ex-intermediate motor terminal boxes 10 mm<sup>2</sup>/16 mm<sup>2</sup>



Type 721 00 10 mm<sup>2</sup>



Type 721 00 16 mm<sup>2</sup>

### Technical data

#### Type 721 00

Marking accd. to 2014/34/EU	⊕ II 2 G Ex e IIC T4/T5/T6 Gb / ⊕ II 2 D Ex tb IIIC T80 °C/T95 °C IP6X
EC-Type Examination Certificate	BVS 13 ATEX 013X
IECEX Certificate of Conformity	IECEX BVS 13.0031X
Marking accd. to IECEx	Ex e IIC T4/T5/T6 Ex tb IIIC T80 °C/T95 °C Db IP6X
Permissible ambient temperature	-20 °C to +40 °C
Rated voltage	up to 690 V
Rated current	depends on terminal mounting
Degree of protection accd. to EN 60529	IP66
Terminal cross section	max. 10 mm <sup>2</sup> / max. 16 mm <sup>2</sup>
Enclosure material	glass-fibre reinforced polyester
Weight	721 00 approx. 1.0 kg / 721 10 approx. 1.1 kg

### Ordering details

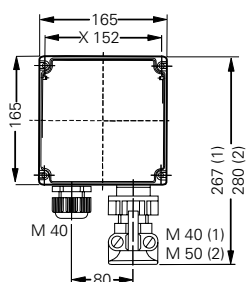
Type	Cable gland	No. of terminals	Order No.
<b>Type 721 00 assembled with screw terminals 2 x 10 mm<sup>2</sup> + 1 x PE-terminals 2 x 10 mm<sup>2</sup></b>			
Ex-e	1 x M40 cable gland 1 x M40 trumpet-shaped gland Ø 19-27 mm	4 x Ex-e 1 x PE	<b>GHG 721 0001 R0013</b>
<b>Type 721 00 assembled with screw terminals 2 x 16 mm<sup>2</sup> + 1 x PE-terminals 2 x 16 mm<sup>2</sup></b>			
Ex-e	1 x M50 Ø 21-35 mm 1 x M50 trumpet-shaped gland Ø 26-34 mm	4 x Ex-e 1 x PE	<b>GHG 721 0001 R0014</b>

Other applications available on request.

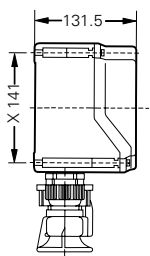
### Accessories

Type	Application	Fixing method	Order No.
<b>Mounting plate for intermediate motor terminal box 721 00</b>			
Size 2A	Wall mounting	snap on	<b>GHG 610 1953 R0107</b>
Size 2A	Trellis mounting	snap on	<b>GHG 610 1953 R0109</b>
Size 2A	Pipe clamp	snap on	<b>GHG 610 1953 R0108</b>
Protective canopy size 2A	for mounting plate size 2A		<b>GHG 610 1955 R0103</b>

### Dimension drawing



Type 721 00



Dimensions in mm



Type 745 02

**Technical data**

Type 745 02	
Marking accd. to 2014/34/EU	⊕ II 2 G Ex e IIC T4/T5/T6 Gb / ⊕ II 2 D Ex tb IIIC T80 °C/T95 °C Db IP6X
EC-Type Examination Certificate	BVS 12 ATEX E 118X
IECEx Certificate of Conformity	IECEx BVS 12.0071X
Marking accd. to IECEx	Ex e IIC T4/T5/T6 Gb Ex tD tb III T80 °C/T95 °C Db IP6X
Permissible ambient temperature	-20 °C to +40 °C
Rated voltage	up to 690 V
Rated current	depends on terminal mounting
Degree of protection accd. to EN 60529	IP66
Enclosure material	glass-fibre reinforced polyester
Terminal cross section	up to 35 mm <sup>2</sup> or max. 70 mm <sup>2</sup>
Weight	745 0201 R0002 approx. 3.0 kg / 745 0201 R0003 approx. 3.2 kg

**Ordering details**

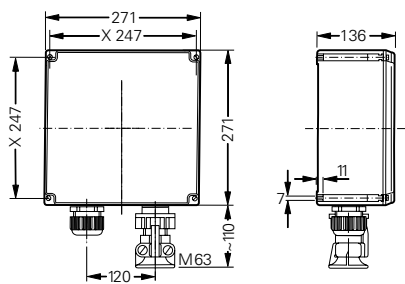
Type	Cable gland	No. of terminals	Order No.
<b>Type 745 02 assembled with screw terminals 2 x 35 mm<sup>2</sup> + 1 x PE-terminals 2 x 35 mm<sup>2</sup></b>			
Ex-e	1 x M50 Ø 21-35 mm 1 x M63 trumpet-shaped gland Ø 35-46 mm	4 x Ex-e 1 x PE	<b>GHG 745 0201 R0002</b>
<b>Type 745 02 assembled with screw terminals 2 x 50/70 mm<sup>2</sup> + 1 x PE-terminals 2 x 50/70 mm<sup>2</sup></b>			
Ex-e	1 x M50 Ø 21-35 mm 1 x M63 trumpet-shaped gland Ø 35-46 mm	4 x Ex-e 1 x PE	<b>GHG 745 0201 R0003</b>

Other applications available on request.

**Accessories**

Type	Application	Fixing method	Order No.
<b>Mounting plate for intermediate motor terminal box 745 02</b>			
Size 3	Pipe clamp	screwless mounting on 2 plates	<b>GHG 610 1953 R0108</b>
Protective canopy size 3	for mounting plate size 3		<b>GHG 610 1955 R0104</b>

**Dimension drawing**



Type 745 02

X = fixing dimensions

Dimensions in mm

## GHG 746 Ex-intermediate motor terminal boxes 185 mm<sup>2</sup>/240 mm<sup>2</sup>



GHG 746 0301 R0001



GHG 746 0301 R0020

### Technical data

#### Type 746 03

Marking accd. to 2014/34/EU	⊕ II 2 G Ex e IIC T4/T5/T6 Gb / ⊕ II 2 D Ex tb IIIC T80 °C/T95 °C Db IP6X
EC-Type Examination Certificate	BVS 12 ATEX E 118X
IECEX Certificate of Conformity	IECEX BVS 12.0071X
Marking accd. to IECEx	Ex e IIC T4/T5/T6 Gb Ex tD tb III T80 °C/T95 °C Db IP6X
Permissible ambient temperature	-20 °C to +40 °C
Rated voltage	up to 690 V
Rated current	depends on terminal mounting
Degree of protection accd. to EN 60529	IP54
Cable gland	via double cable pothead
Enclosure material	glass-fibre reinforced polyester
Terminal cross section	up to 180 mm <sup>2</sup> or max. 240 mm <sup>2</sup>
Weight	746 0301 R0001 approx. 6.3 kg / 746 0301 R0008 approx. 16.5 kg

### Ordering details

Type	Cable gland	No. of terminals	Order No.
<b>Type 746 03 assembled with bold clamp 2 x 185 mm<sup>2</sup> + PE-bold clamp 2 x 185 mm<sup>2</sup></b>			
Ex-e	Double cable pothead 1 x entry sleeve 21-45 mm 1 x entry sleeve 46-72 mm	3 x Ex-e 1 x PE	<b>GHG 746 0301 R0001</b>
<b>Type 746 03 assembled with bold clamp 240 mm<sup>2</sup> + PE-bold clamp 240 mm<sup>2</sup></b>			
Ex-e	Double cable pothead 2 x entry sleeve 46-72 mm	6 x Ex-e 2 x PE	<b>GHG 746 0301 R0008</b>
<b>Type 746 03 assembled with bold clamp 240 mm<sup>2</sup> + PE-bold clamp 240 mm<sup>2</sup></b>			
Ex-e	Double cable pothead 3 x entry sleeve 46-72 mm	12 x Ex-e 4 x PE	<b>GHG 746 0301 R0020</b>

Other applications available on request.

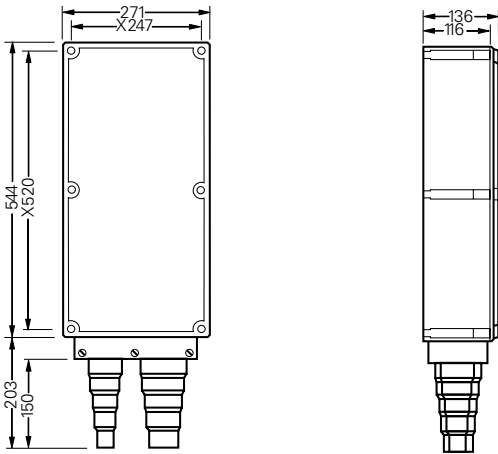


GHG 746 0301 R0020

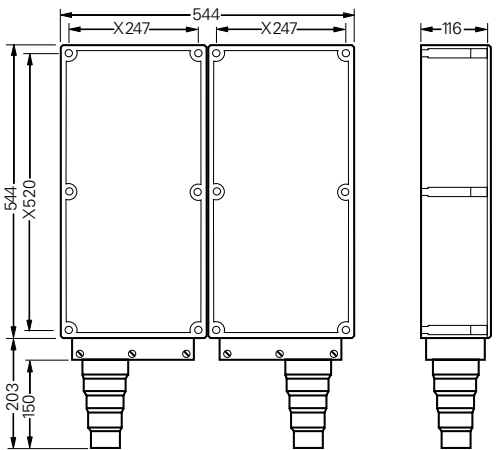


GHG 746 0301 R0001

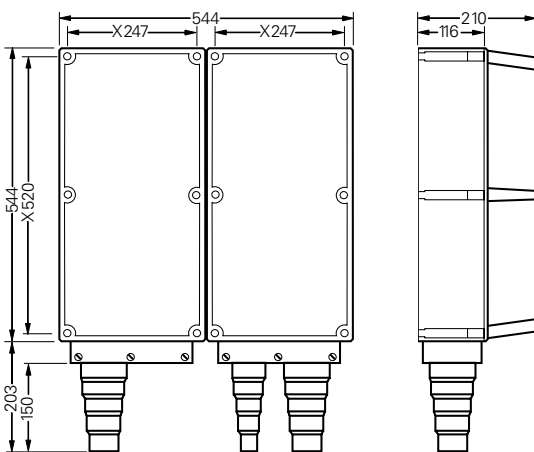
Dimension drawing



GHG 746 0301 R0001



GHG 746 0301 R0008



GHG 746 0301 R0020

X = fixing dimension