

# EYS conduit sealing fittings – stainless steel

Cl. I, Div. 1 & 2, Groups A, B, C, D  
Cl. II, Div. 1, Groups E, F, G  
Cl. III

Explosionproof  
Dust-ignitionproof

5F  
5F

See pages 124-125 for  
Chico sealing compound and fiber

## Applications:

EYS sealing fittings:

- Restrict the passage of gases, vapors or flames from one portion of the electrical installation to another at atmospheric pressure and normal ambient temperatures
- Limit explosions to the sealed off enclosure
- Limit pre-compression or “pressure piling” in conduit systems

Sealing fittings are required:

- At each entrance to an enclosure housing an arcing or sparking device when used in Class I, Division 1 and 2 hazardous locations; to be located as close as practicable and, in no case, more than 18” from such enclosures
- At each conduit entrance of 2” size or larger to an enclosure or fitting housing terminals, splices or taps when used in Class I, Division 1 hazardous locations; to be located as close as practicable and, in no case, more than 18” from such enclosures
- In conduit systems when leaving Class I, Division 1 or Division 2 hazardous locations
- In cable systems when the cables either do not have a gas/vaportight continuous sheath or are capable of transmitting gases or vapors through the cable core when those cables leave the Class I, Division 1 or Division 2 hazardous locations

## Features:

EYS sealing fittings include:

- Minimum turning radius
- Large openings with threaded closures to provide easy access to conduit hubs for making dams
- Integral bushings in conduit hubs to protect conductor insulation from damage
- Taper tapped hubs to ensure ground continuity

EYS sealing fittings are available for installation in both horizontal or vertical positions.

## Stainless steel benefits:

- Retain strength in extreme heat and extreme cold conditions
- Surface is easy to maintain and keep clean
- Easy cleaning capabilities make these fittings perfect for food processing and other hygienic areas where wash downs are common
- Superior strength and durability greatly reduce replacement – this will lower your total cost of ownership and increase your return on investment
- Do not require harsh environment-damaging cleaners to keep them looking like new

## Certifications and compliances:

NEC/CEC:

- Class I, Divisions 1 & 2, Groups A, B, C, D
- Class II, Division 1, Groups E, F, G
- Class III

## Standard material:

- Bodies and plugs – 316 stainless steel

## Standard finish:

- Passivated

## Ordering information:

For sealing in vertical or horizontal positions

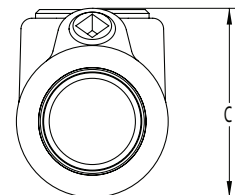
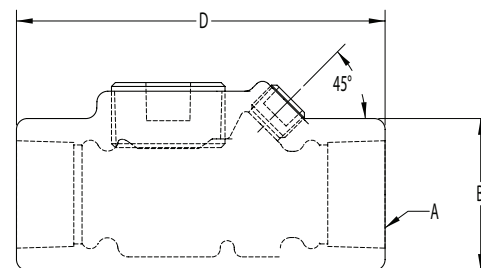
| Hub size | Cat. #<br>Female hub |
|----------|----------------------|
| 3/4"     | EYS21 SS             |
| 1"       | EYS31 SS             |



## Accessories (ordered separately):

| Description   | Cat. #         |
|---|----------------|
| • 3/4" to 1/2" reducer.....                                 | RDU303029      |
| <i>See page 92 for more information</i>                     |                |
| • 1/2" conduit nipple .....                                 | NPL50CL 316SS  |
| • 3/4" conduit nipple.....                                  | NPL75CL 316SS  |
| • 1" conduit nipple .....                                   | NPL100CL 316SS |
| <i>See Commercial Products Catalog for more information</i> |                |

## Dimensions (in inches):



| Hub size | A    | B    | C    | D    |
|----------|------|------|------|------|
| 3/4"     | 0.75 | 1.50 | 1.95 | 3.63 |
| 1"       | 1.00 | 1.75 | 2.20 | 4.25 |