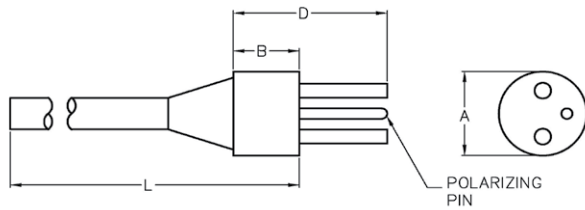
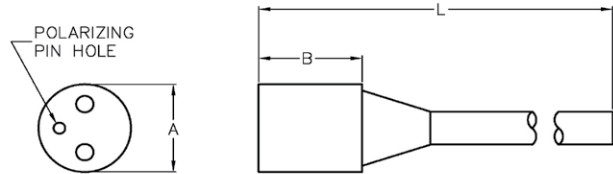


With decades of proven reliability, Crouse Hinds patented design allows for plugging and unplugging underwater by de-energizing electrical power. Each connector is pressure balanced for easy engagement and disengagement in high pressure environments up to 20,000 PSI (45,000 feet of sea water). Rubber-to-Rubber contact of specially formulated neoprene provides total sealing integrity. Unmated connectors should not be exposed to water for an extended period. Dummy connectors should be used to purge water from the contact surfaces and reduce corrosion. Extreme flexing and rough handling will reduce the useful life of these connectors.



SERIES 51 MALE CONNECTOR



SERIES 51 FEMALE CONNECTOR

**E Specifications**

E Series			Maximum AC Volts: 230				Contacts Per Pin: 1		Maximum Amps: 15 (Per Contact)				Wire Size: #16 AWG
Male Order No.	No. of Pins	No. of Contacts	Locking Sleeve†	A in.	B in.	D in.	L -1 in.	Female Order No.	Locking Sleeve†	A in.	B in.	L -1 in.	Male/Female Also Mates With
51E1M-1	1	1		.438	1	2	24	51E1F-1		.375	1.125	24	53E1(M/F)-1
51E1M-80	1	1		.625	1.56	2.56	24	51E1F-80		.625	1.562	24	53E1(M/F)-1
51E2M-1	2	2	58TF8-2	1	.75	1.75	24	51E2F-1	58TM8-2	1	1.125	24	53E2(M/F)-1
51E3M-1	3	3	58TF8-2	1	.75	1.75	24	51E3F-1	58TM8-2	1	1.125	24	53E3(M/F)-1
51E4M-1	4	4	58TF10-2	1.25	.75	1.75	24	51E4F-1	58TM10-2	1.25	1.125	24	53E4(M/F)-1

† Locking Sleeves are not included with connectors

**F Specifications**

F Series			Maximum AC Volts:115				Contacts Per Pin: 2		Maximum Amps: 7.5 (Per Contact)				Wire Size: #18
Order No.	No. of Pins	No. of Contacts	Locking Sleeve†	A in.	B in.	D in.	L -1 in.	Order No.	Locking Sleeve†	A in.	B in.	L -1 in.	Male/Female Also Mates With
51F2M-1	1	2		.438	1	2	24	51F2F-1		.438	1.125	24	53F2(M/F)-1
51F2M-50	1	2		.625	1.56	2.56	24	51F2F-10		.625	1.562	24	53F2(M/F)-1
51F4M-1	2	4	58TF8-2	1	.75	1.75	24	51F4F-1	58TM8-2	1	1.125	24	53F4(M/F)-1
51F6M-1	3	6	58TF10-2	1.25	.75	1.75	36	51F6F-1	58TM10-2	1.125	1.125	36	53F6(M/F)-1
51F8M-1	4	8	58TF10-2	1.25	.75	1.75	36	51F8F-1	58TM10-2	1.125	1.125	36	53F8(M/F)-1

† Locking Sleeves are not included with connectors, for drawing please see page 136

Add -DO for dummy connector, all circuits open

Add -DS for dummy connector, all circuits shorted or paired or as indicated

**TECH NOTE:**

To optimize the performance of Crouse Hinds mating connectors, it is recommended that pins and sockets be lubricated regularly with silicone grease. For applications requiring non-toxic, non-flammable lubrication, Christo-Lube Part Number MCG-111-2OZ is recommended.

