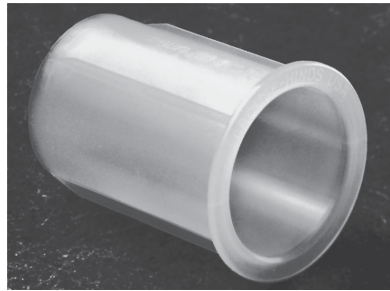


6E LNR Conduit Liner

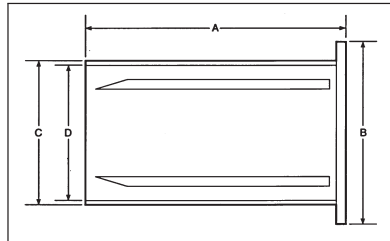
Applications:

LNR conduit liners are installed in rigid metal conduit or IMC:

- To provide a smooth wire entry from conduit into enclosures to protect wires from abrasion as they are pulled
- With thin wall or thick wall enclosures
- Entering drilled and tapped openings or slip holes
- Entering an enclosure vertically or horizontally
- Regardless of where the conduit ends in relation to the enclosure wall



Dimensions In Inches:



Features:

- UL listed and CSA certified
- No need for threaded bushings, reducers, or special machining
- Corrosion and heat resistant polypropylene material
- Smooth flange providing easy wire pulling and protects conductors being installed
- Space saving
- Molded ribs ensure a tight fit, preventing the liner from sliding out while conductors are being pulled
- Quick and easy to install

Certifications and Compliances:

- UL Standard 514B
- CSA Standard C22.2 No. 18
- U.S. Patent No. 5,383,688

Standard Materials:

- Polypropylene

Standard Finishes:

- Natural (clear)

Sizes:

- 1/2" through 4"

Cat. #	Size	A	B	C	D
LNR1	1/2"	1 3/16"	7/8"	5/8"	9/16"
LNR2	3/4"	1 9/16"	1 1/8"	13/16"	3/4"
LNR3	1"	2 1/16"	1 3/8"	1 1/16"	7/8"
LNR4	1 1/4"	2 7/16"	1 3/4"	1 3/8"	1 1/4"
LNR5	1 1/2"	2 9/16"	2"	1 5/8"	1 7/16"
LNR6	2"	2 9/16"	2 7/16"	2 1/16"	1 7/8"
LNR7	2 1/2"	2 7/8"	2 7/16"	2 1/4"	
LNR8	3"	2 7/8"	3 9/16"	3 1/16"	2 7/8"
LNR9	3 1/2"	3 1/16"	4 1/16"	3 9/16"	3 3/8"
LNR10	4"	3 1/16"	4 9/16"	4"	3 7/8"

6E