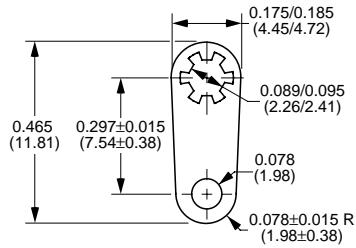
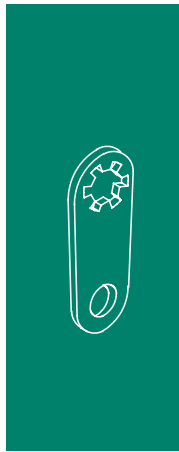
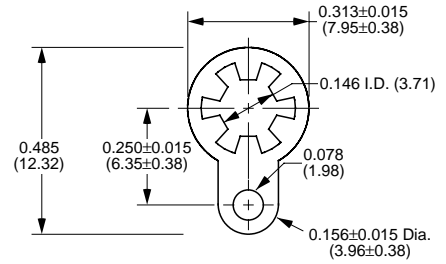


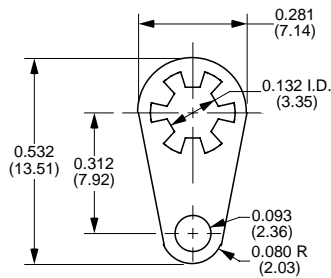
Lockwasher Terminals



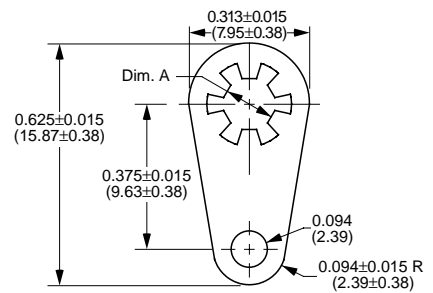
Part Number	Material Type	Finish Code	Inventory Type
922-092	0.013" (0.33mm) Bronze	0	Stock



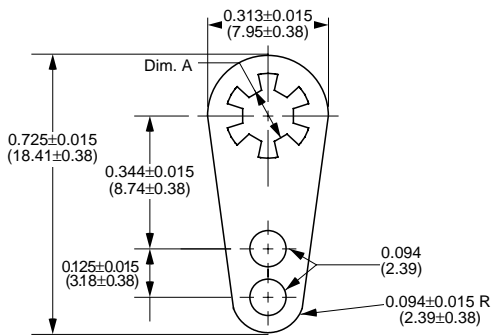
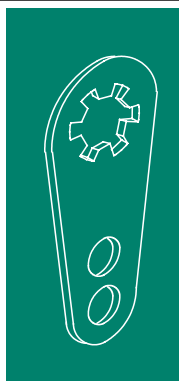
Part Number	Material Type	Finish Code	Inventory Type
947-144	0.018" (0.46mm) Bronze	0	Stock



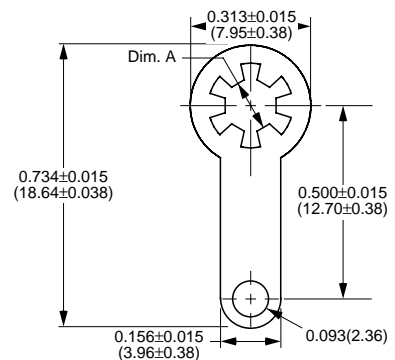
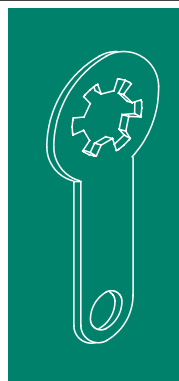
Part Number	Material Type	Finish Code	Inventory Type
951-130	0.016" (0.41mm) Brass	0	Special



Part Number	Material Type	Finish Code	Inventory Type	Dim. 'A'
802-120	0.018" (0.46mm) Bronze	0	Stock	0.120" (3.05mm)
802-144	0.018" (0.46mm) Bronze	0	Stock	0.144" (3.66mm)
802-169	0.018" (0.46mm) Bronze	0	Stock	0.169" (4.29mm)



Part Number	Material Type	Finish Code	Inventory Type	Dim. 'A'
803-120	0.018" (0.46mm) Bronze	0	Stock	0.120" (3.05mm)
803-144	0.018" (0.46mm) Bronze	0	Stock	0.144" (3.66mm)
803-169	0.018" (0.46mm) Bronze	0	Stock	0.169" (4.29mm)
803-196	0.018" (0.46mm) Bronze	0	Special	0.196" (4.98mm)
MS 77067-1	0.018" (0.46mm) Bronze	MS	Special	0.120" (3.05mm)
MS 77067-2	0.018" (0.46mm) Bronze	MS	Special	0.144" (3.66mm)
MS 77067-3	0.018" (0.46mm) Bronze	MS	Special	0.169" (4.29mm)



Part Number	Material Type	Finish Code	Inventory Type	Dim. 'A'
810-120	0.018" (0.46mm) Bronze	0	Stock	0.115"/0.123" (2.92mm/3.12mm)
810-144	0.018" (0.46mm) Bronze	0	Stock	0.141"/0.150" (3.58mm/3.81mm)
810-169	0.018" (0.46mm) Bronze	0	Special	0.168"/0.176" (4.27mm/4.47mm)
MS 77072-1	0.018" (0.46mm) Bronze	MS	Special	0.115"/0.123" (2.92mm/3.12mm)
MS 77072-2	0.018" (0.46mm) Bronze	MS	Special	0.141"/0.150" (3.58mm/3.81mm)
MS 77072-4	0.018" (0.46mm) Bronze	MS	Special	0.168"/0.176" (4.27mm/4.47mm)