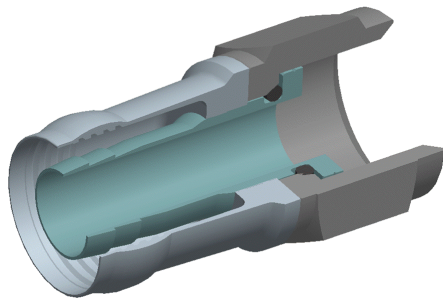


www.icmcorp.net

The DB59U is our Universal "F" type connector that fits standard, tri-shield, and quad-shield RG59U coaxial cable.



CPLCRBC-B
Utilize This Tool

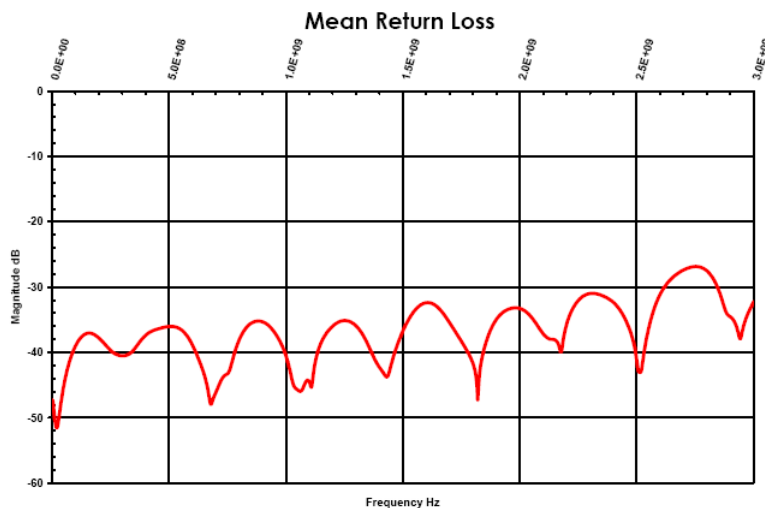


Specifications:

- 75 Ohm Construction
- DC-1 GHz > 30 dB Return Loss < 1.07 VSWR
- DC-2 GHz > 30 dB Return Loss < 1.10 VSWR
- DC-3 GHz > 30 dB Return Loss < 1.16 VSWR
- Cable Pullout Force Exceeding 80 in/lbs.
- Body Material Brass
- Body Material (Plating) Nickel

Coax Sizing (inches)	Min ~ Max
Center	.0317 ~ .0339
Dielectric	.144 ~ .157
Outer Jacket	.232 ~ .273

Coax Sizing (mm)	Min ~ Max
Center	.81 ~ .86
Dielectric	3.66 ~ 3.99
Outer Jacket	5.89 ~ 6.93



Frequency (Hz)	dB
5 MHz	-50.4 dB
15 MHz	-44.2 dB
550 MHz	-37.1 dB
750 MHz	-44.4 dB
1000 MHz	-39.9 dB
2000 MHz	-33.7 dB
3000 MHz	-33.1 dB

Lower return loss (dB) equates to less reflection through the connector while maintaining signal strength