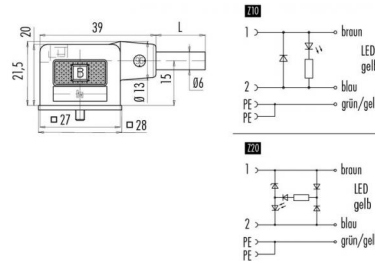


Product Area	Female solenoid valve connector DIN EN 175301-803, low housing, IP 67, moulded cabel PUR 0,75 mm ² , wired, LED serie 210/A	Pole Article number	2+2PE 31 1313 300 510
--------------	--	---------------------	-----------------------

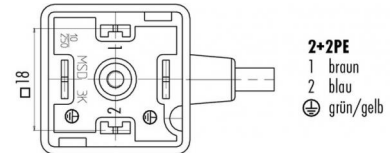
illustration



scale drawing



Contact Arrangement



Technical data

Common values

Connector Design	Female solenoid valve connectors
Connector locking system	central screw
Termination	IDT connection, overmoulded on cable
Wire gauge (mm)	0,75 mm ²
Wire gauge (AWG)	20
Max. Cable outlet	-
Upper temperature	+85 °C
Lower temperature	-25 °C

Electrical values

Rated voltage	24 V
Rated impulse voltage	800 V
Pollution degree	3
Overvoltage category	III
Material group	III
Rated current (40°C)	10 A
Volume resistivity	≤ 15 mΩ
EMV compliance	not shielded
Degree of protection	IP 67
Mechanical operation	> 50 mating cycles

Material

Material of contact	CuSn (bronze)
Contact plating	Sn (tin)
Material of contact body	PA
Material of housing	PC

Cable data

material housing	PUR
insulation single lead	PVC
single lead structure	24 x 0,2 Cu
cable sheath Ø	6
conductor resistance	26Ω/Km
temperature range cable movable c from	-5
temperature range cable movable c to	70
temperature range cable fixed c from	-25
temperature range cable fixed c to	70
bending radius cable fixed	30 mm
bending radius cable movable	60 mm
cable diameter	6

Contacts: 2+2PE Z10, Cable length 3 m,
Female solenoid valve connector DIN EN
175301-803, low housing, IP 67, moulded
cabel PUR 0,75 mm², wired, LED