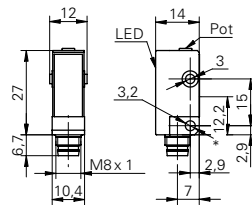


Diffuse sensors with background suppression

FHDK 10 (adjustable sensing distance)

sample drawing



* emitter axis

general data

type	background suppression
light source	pulsed red LED
sensing distance T_w	20 ... 120 mm
sensing range T_b (at T_w max.)	5 ... 120 mm
sensing range T_b (at T_w min.)	5 ... 20 mm
alignment / soiled lens indicator	flashing light indicator
light indicator	LED yellow
sensing distance adjustment	mechanical, 5 turn
distance to focus	35 ... 45 mm
wave length	660 nm
beam diameter	4 mm at focus
suppression of reciprocal influence	yes

electrical data

response time / release time	< 1 ms
voltage supply range +Vs	10 ... 30 VDC
current consumption max. (no load)	30 mA
current consumption typ.	20 mA
voltage drop V_d	< 1,8 VDC
output current	< 100 mA
short circuit protection	yes
reverse polarity protection	yes

mechanical data

width / diameter	10,4 mm
height / length	27 mm
depth	14 mm
type	rectangular
housing material	plastic (ASA)
front (optics)	PMMA

ambient conditions

operating temperature	-25 ... +65 °C
-----------------------	----------------

sample picture



**Diffuse sensors with
background suppression**
FHDK 10 (adjustable sensing distance)

order reference	connection types	output circuit	output function	protection class
FHDK 10N1101/KS35	flylead connector M8 3 pin	NPN	light operate	IP 65
FHDK 10N5101	cable 4 pin, 2 m	NPN	light / dark operate	IP 65
FHDK 10N5101/S35A	connector M8 4 pin	NPN	light / dark operate	IP 67
FHDK 10P1101/KS35	flylead connector M8 3 pin	PNP	light operate	IP 65
FHDK 10P5101	cable 4 pin, 2 m	PNP	light / dark operate	IP 65
FHDK 10P5101/S35A	connector M8 4 pin	PNP	light / dark operate	IP 67